

# Someburros Use Permit





- South of Van Buren on the west side of Estrella
- Within the Hudson Commons PAD
- Immediately south of Culver's







East elevation  
facing Estrella  
Parkway

2 EAST ELEVATION  
SCALE: 1/8" = 1'-0"



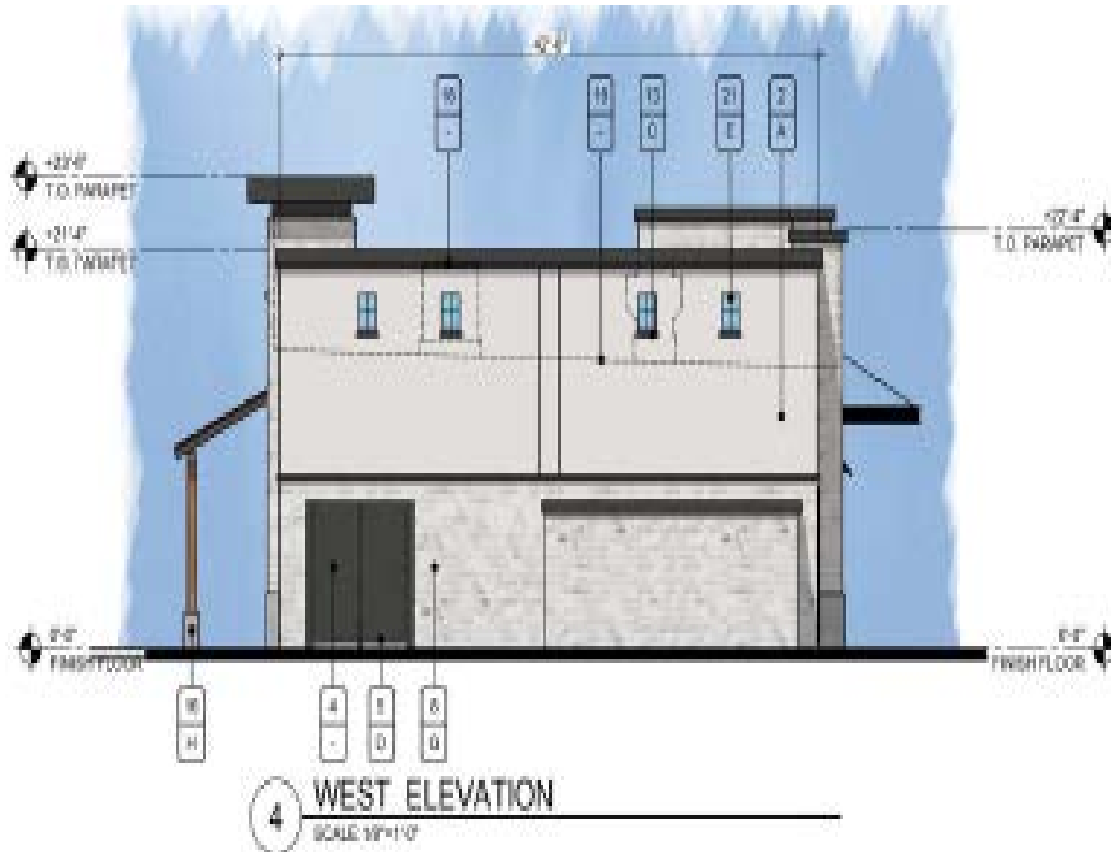
North elevation  
facing Culver's





South elevation  
with pick-up  
window

3 SOUTH ELEVATION  
SCALE: 1/8"=1'-0"



West elevation  
facing interior  
drive aisle



# Recommendation



## SOMEBURROS USE PERMIT

Staff, and the Planning & Zoning Commission by a vote of 6 to 0, recommend approval of the Use Permit subject to the stipulations in the Council Action Report.