



FY2021 Fall/Winter Pavement Management Projects

October 5, 2020

FY2021 FALL/WINTER PAVEMENT MANAGEMENT



AGENDA

- Pavement Condition Results
- Treatments for Fall/Winter FY2021
- Treatment Locations
- Recommendation



FY2021 FALL/WINTER PAVEMENT MANAGEMENT



PAVEMENT CONDITION INDEX BY ROADWAY CLASSIFICATION

Functional Class	PCI Targets	Current Condition			
		Average		%>X	
		2014	2020	2014	2020
Arterial	80 (with 90 percent > 70)	70.4	80.0	57.8	80.2
Collector	75 (with 90 percent > 65)	70.1	76.9	70.2	85.4
Industrial	70 (with 90 percent > 55)	55.0	74.5	40.0	92.0
Residential	70 (with 90 percent > 55)	66.6	77.3	84.0	92.3
Rural	65 (with 90 percent > 50)	67.2	68.1	78.1	80.0
2014 Network Average PCI		68.1			
2020 Network Average PCI		78.4			

Green Shading = At or above target value.

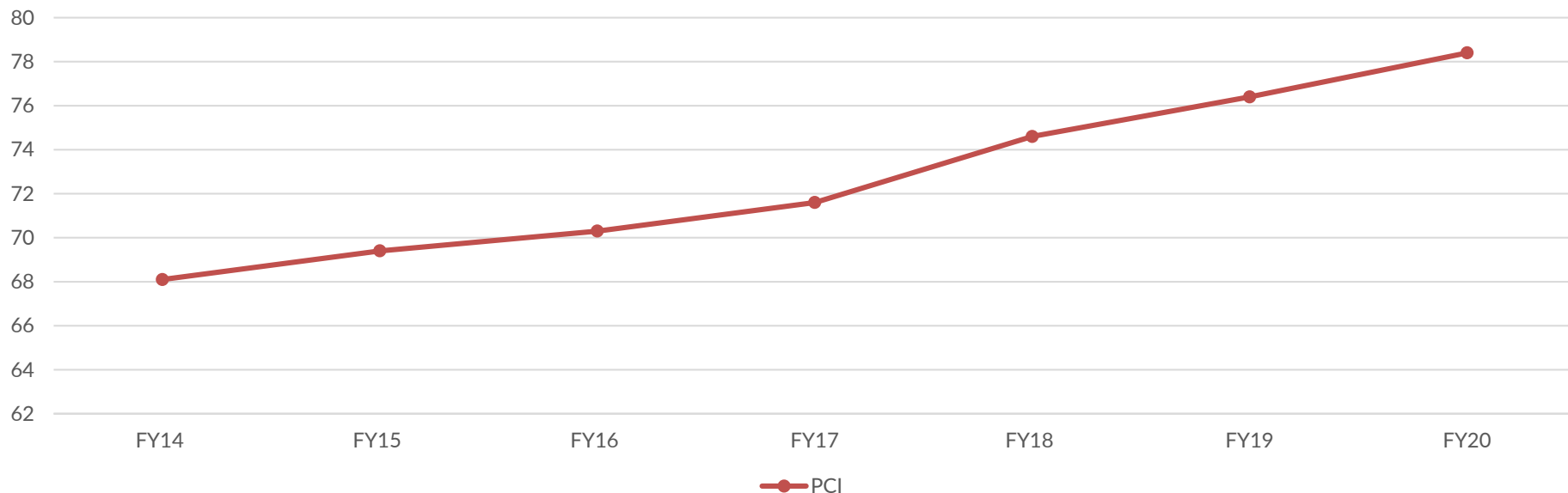
Yellow shading = Within 5 points of target value.

FY2021 FALL/WINTER PAVEMENT MANAGEMENT



PAVEMENT CONDITION INDEX

Seven-Year Network Pavement Condition Index



FY2021 FALL/WINTER PAVEMENT MANAGEMENT



HIGH VOLUME FAST WITH SCRUB SEAL – RIGGS ROAD EAST OF RAINBOW VALLEY ROAD

BEFORE TREATMENT



AFTER TREATMENT



FY2021 FALL/WINTER PAVEMENT MANAGEMENT



LOW VOLUME CAPE SEAL – PALM VALLEY PHASE III

BEFORE TREATMENT



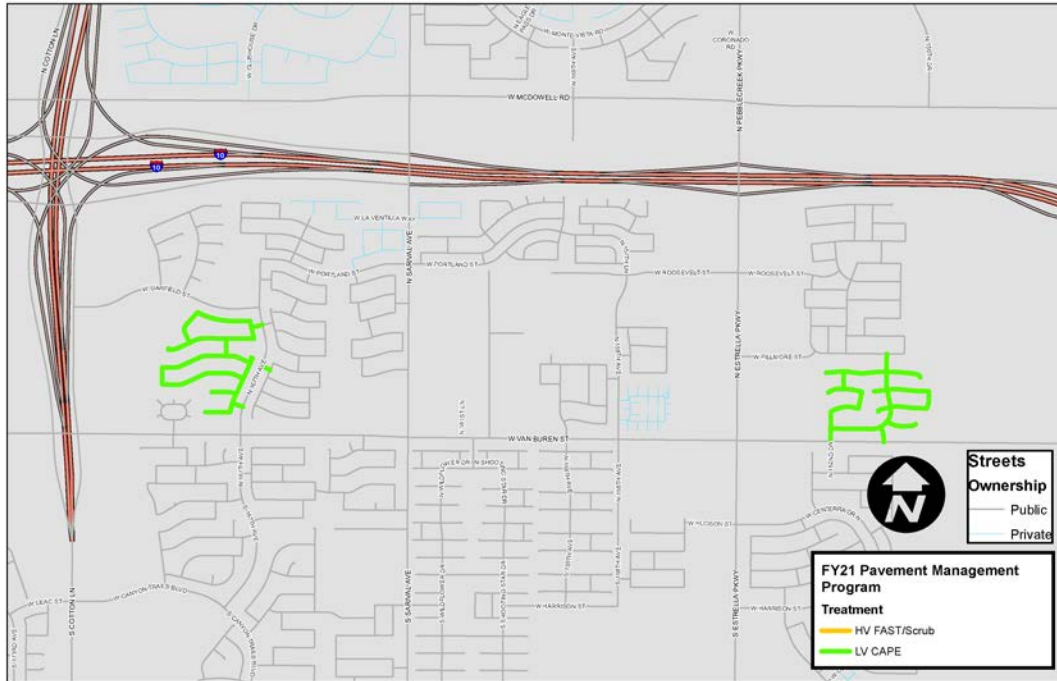
AFTER TREATMENT



FY2021 FALL/WINTER PAVEMENT MANAGEMENT



PROJECT MAP - NORTH



LOW VOLUME CAPE SEAL

- SOUTHWEST CORNER OF CANYON TRAILS PHASE 1
- RANCHO MIRAGE





FY21 Pavement Management Program

Treatment

- HV FAST/Scrub
- LV CAPE

Streets Ownership

- Public
- Private

Continued on Insert Map

- CORONADO VILLAGE 7.8 & 7.9

- RAINBOW VALLEY ROAD – RIGGS ROAD TO RAY ROAD
- WILLIS ROAD – RAINBOW VALLEY ROAD TO MOUNTAIN VISTA DRIVE

FY2021 FALL/WINTER PAVEMENT MANAGEMENT



COST SUMMARY



ADA Ramp Repairs & Replacements:	\$150,000
Crack Sealing:	\$250,000
Rainbow Valley Road Surface Preparation:	\$118,300
Pavement Data Inventory:	\$200,000
High Volume FAST with Scrub Seal:	\$782,600
Low Volume Cape Seal:	\$434,300
FY2021 Fall/Winter Project Total:	\$1,935,200

FY2021 FALL/WINTER PAVEMENT MANAGEMENT



RECOMMENDATION

Approve expenditures in the amount of \$1,935,200 to complete FY2021 Fall/Winter pavement management projects in various locations throughout the City.

