

Palm Valley Pavilions (East) Comprehensive Sign Package

City Council Meeting
February 24, 2020



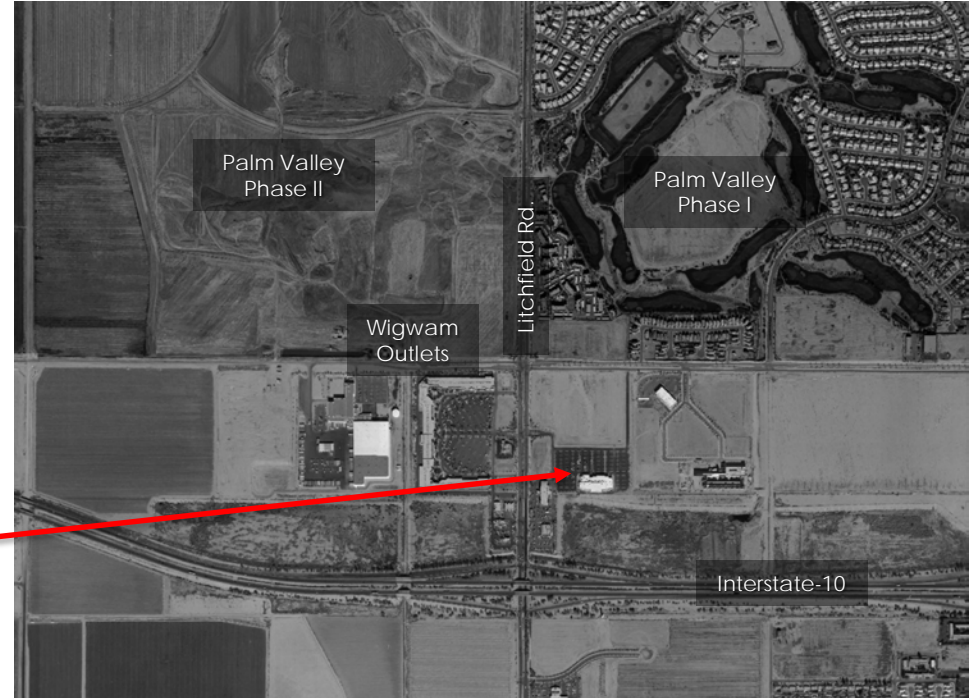
PALM VALLEY PAVILIONS

-

History



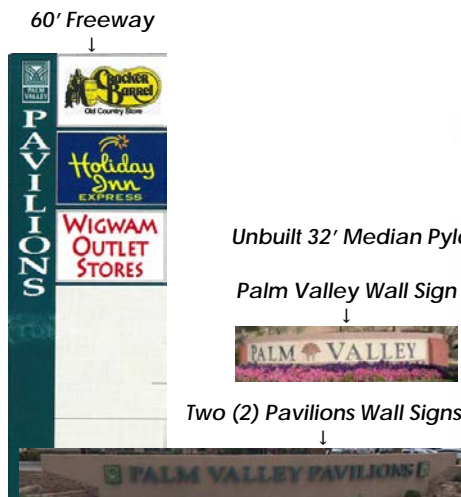
- Palm Valley Master Plan
- 1996 Design Guidelines
- 1998 Amendment
- Former Palm Valley Cinema



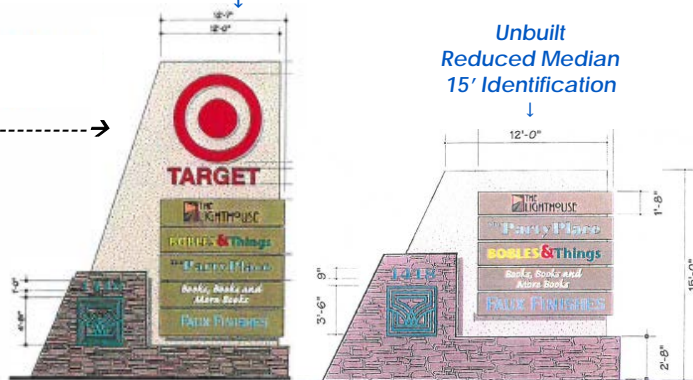
Approved and Proposed



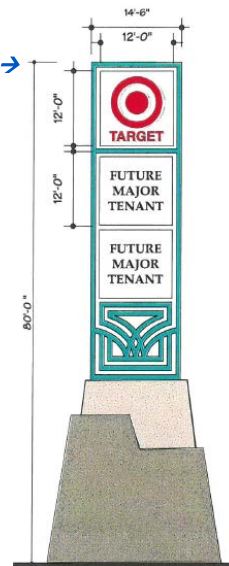
.....1996.....-----1998-----...2020....



One (1) 32' Litchfield Rd. Pylon &
One (1) 32' McDowell Rd. Pylon



80' Freeway →

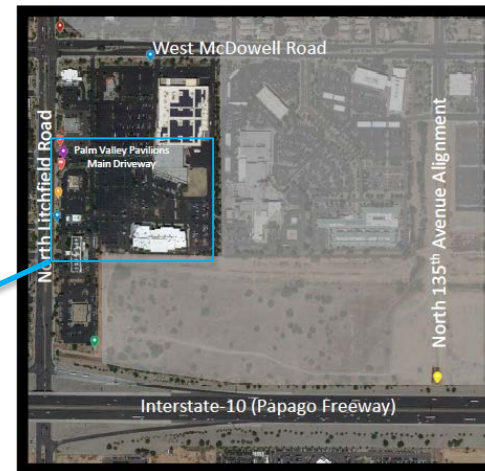
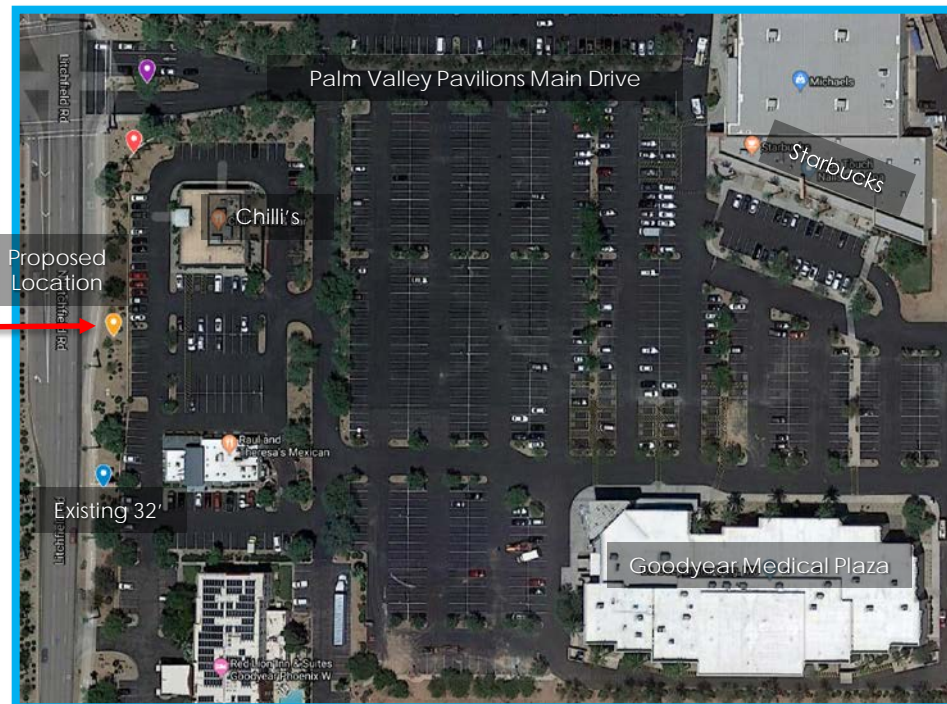


Proposed
10' Goodyear Medical



*Images not to scale

New Sign



- [Litchfield Road Pylon 32'](#)
- [McDowell Road Pylon 32'](#)
- [15' Identification Pylon](#)
- [Goodyear Medical Plaza 10' Pylon](#)
- [1996 60' Freeway Pylon](#)
- [1998 80' Freeway Pylon](#)
- [Palm Valley Wall Sign](#)
- [Palm Valley Pavilions Wall Sign](#)
- [Palm Valley Pavilions Wall Sign](#)

*For illustrative purposes only

Recommendation



- Adopt Resolution
 - Amendment for Goodyear Medical Plaza
 - Incorporate into Palm Valley Pavilions (East) Development Guidelines as CSP

The background image shows a street lined with tall palm trees under a blue sky. A blue semi-transparent overlay covers the entire image. In the foreground, a sign for 'PALM VALLEY' is visible. The text 'Thank You!' is centered in the lower half of the image.

Thank You!



PALM VALLEY PAVILIONS