

BEFORE THE BOARD OF DIRECTORS OF  
ESTRELLA MOUNTAIN RANCH COMMUNITY FACILITIES DISTRICT  
(CITY OF GOODYEAR, ARIZONA)  
**PETITION FOR MODIFICATION OF ASSESSMENTS**

TO THE BOARD OF DIRECTORS OF ESTRELLA MOUNTAIN RANCH  
COMMUNITY FACILITIES DISTRICT (CITY OF GOODYEAR, ARIZONA):

The undersigned hereby certify that they are all people who have an interest in  
lots subject to assessment within the Estrella Mountain Ranch Community  
Facilities District (City of Goodyear, Arizona) (the "District"):

(1) That the undersigned hereby request that the following assessment numbers:

<u>Assessment No.</u>	<u>Original Assessment Amount</u>
<b><u>005-01-001</u></b>	<b><u>\$ 2,589,300.00</u></b>

(2) be modified in the following manner, to wit:

<u>Assessment No.</u>	<u>Assessments Bear After Modification</u>
<b><u>005-02-001 through 005-02-042</u></b>	<b><u>\$ 5,805.61 per lot</u></b>
<b><u>005-02-043</u></b>	<b><u>\$ 2,345,464.40</u></b>

Attached to this petition and marked Exhibit 'A' is a true and correct copy of the  
description of the property owned by the undersigned prior to the modification.

Attached to this petition and marked Exhibit 'B' is a legal description of the property for  
each respective assessment set forth above as modified in accordance with this request.

Attached to this petition and marked Exhibit 'C' is a true copy of the amended portion of  
the assessment diagram with respect of the assessment set forth above.

The undersigned acknowledge that, upon approval by the Board of Directors of the  
District, the modified and corrected assessment shall be binding on the undersigned.

The undersigned hereby request that the Board of Directors of the District modify and  
correct the assessment numbers set forth in Paragraph (1) hereof to read in the manner  
set forth in Paragraph (2) hereof and direct the Superintendent of Streets of the District  
to note the modification on his record of Assessment, together with the date the  
modification is made.

The owners and other parties with an interest in the applicable assessed parcels  
request and have no objection to the reallocation of the assessments by the Board  
of Directors of the District as set forth in the application and expressly waive the  
notice, hearing and other requirements of A.R.S. Section 48-594.

OWNER OR PERSON CLAIMING  
INTEREST IN PROPERTY  
NNP III-Estrella Mountain Ranch, LLC



\_\_\_\_\_  
Senior Vice President

ASSESSMENT NO.

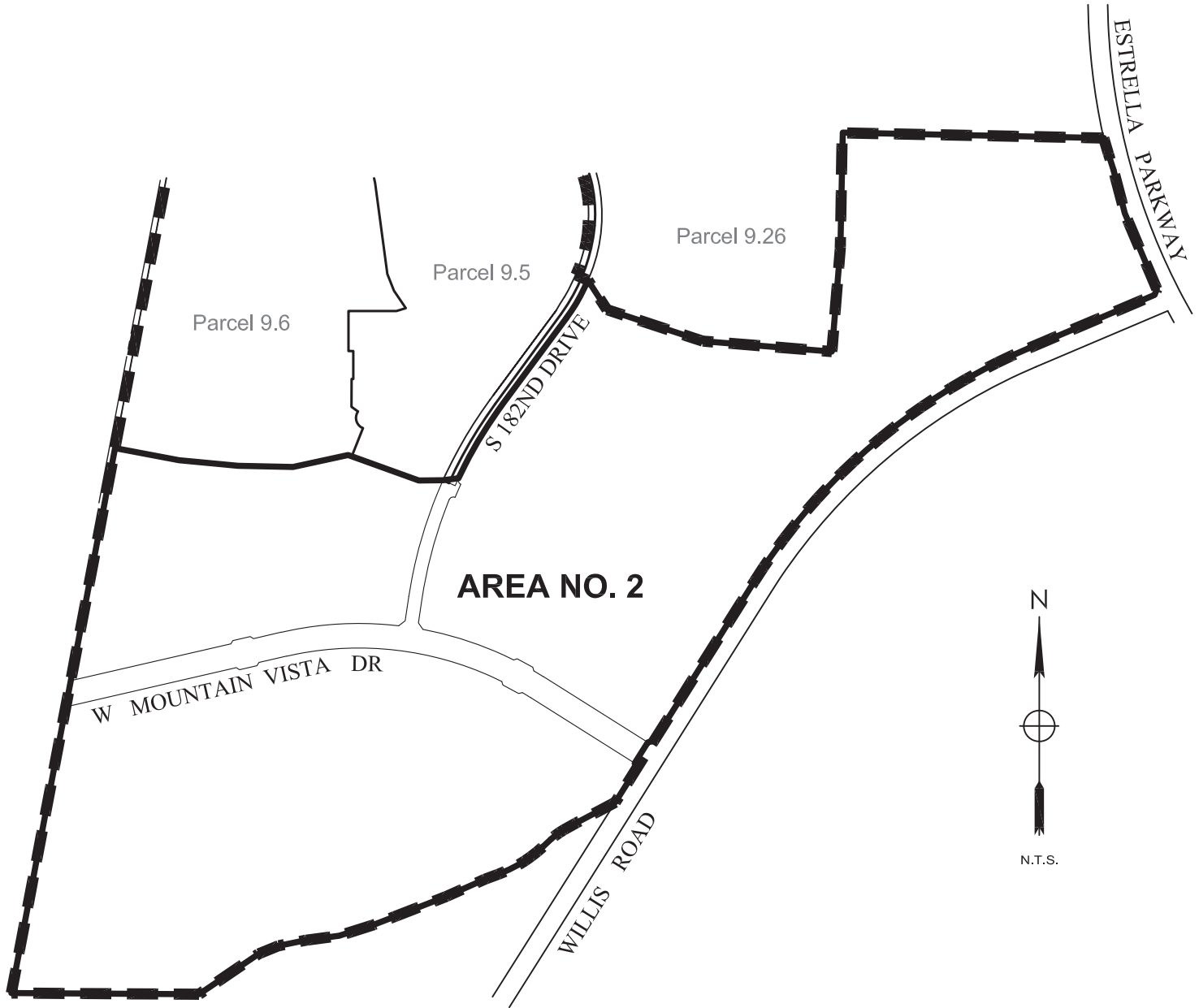
\_\_\_\_\_  
005-01-001

NOTE: all persons claiming an interest in the parcel(s) must execute this petition including mortgage and lien holders.

**EXHIBIT 'A'**

LEGAL DESCRIPTION FOR ASSESSMENT 005-01-001,  
TO BE MODIFIED.

ASSESSMENT DIAGRAM FOR  
**ESTRELLA MOUNTAIN RANCH COMMUNITY FACILITIES DISTRICT**  
**CITY OF GOODYEAR, ARIZONA**  
 SPECIAL ASSESSMENT REVENUE BONDS (SERIES 2015)  
**MONTECITO ASSESSMENT DISTRICT NO. 2**  
**ASSESSMENT NO. 005-01-001 (AREA NO. 2)**



LOT NO.	ASSESSMENT NO.	LOT AREA (SF)
	005-01-001	7,832,088

**ASSESSMENT NO.**  
**005-01-001**



ASSESSMENT DIAGRAM FOR  
ESTRELLA MOUNTAIN RANCH COMMUNITY FACILITIES DISTRICT  
CITY OF GOODYEAR, ARIZONA  
SPECIAL ASSESSMENT REVENUE BONDS (SERIES 2015)  
**MONTECITO ASSESSMENT DISTRICT NO. 2**  
**ASSESSMENT NO. 005-01-001 (AREA NO. 2)**

**Estrella Mountain Ranch Community Facilities District –  
Montecito Special Assessment District No. 2  
Assessment Area #2  
Goodyear, Arizona**

January 2, 2015  
Job No. 2011-072.105  
Page 1 of 6

A PORTION OF SECTIONS 26, 27 AND 34, OF TOWNSHIP 1 SOUTH, RANGE 2 WEST, OF THE GILA AND SALT RIVER BASE AND MERIDIAN, MARICOPA COUNTY, ARIZONA, BEING MORE PARTICULARLY DESCRIBED AS FOLLOWS:

**COMMENCING AT A G.L.O. BRASS CAP MARKING THE SOUTHWEST CORNER OF SAID SECTION 27, TOWNSHIP 1 SOUTH, RANGE 2 WEST, FROM WHICH THE SOUTH QUARTER CORNER OF SAID SECTION 27 BEARS SOUTH 89 DEGREES 34 MINUTES 33 SECONDS EAST, A DISTANCE OF 2634.60 FEET;**

**THENCE SOUTH 89 DEGREES 34 MINUTES 33 SECONDS EAST, A DISTANCE OF 1,309.01 FEET TO THE EASTERLY RIGHT OF WAY LINE OF A 50' WIDE EASEMENT FOR EL PASO GAS COMPANY, PER DOCUMENT NO. 2001-0753945, M.C.R., BEING ALSO THE POINT OF BEGINNING OF THE PARCEL HEREIN DESCRIBED;**

**THENCE NORTH 10 DEGREES 45 MINUTES 59 SECONDS EAST, ALONG SAID EASTERLY RIGHT OF WAY LINE, A DISTANCE OF 161.96 FEET TO THE SOUTHWEST CORNER OF THE PLAT FOR "PARCEL 9.6" AS RECORDED IN BOOK 1179, PAGE 32, M.C.R.;**

**THENCE SOUTH 79 DEGREES 14 MINUTES 00 SECONDS EAST, ALONG THE SOUTHERLY LINE OF SAID PLAT, A DISTANCE OF 292.62 FEET;**

**THENCE SOUTH 84 DEGREES 37 MINUTES 33 SECONDS EAST, A DISTANCE OF 266.03 FEET;**

**THENCE SOUTH 88 DEGREES 49 MINUTES 07 SECONDS EAST, A DISTANCE OF 246.31 FEET;**

**THENCE NORTH 77 DEGREES 48 MINUTES 11 SECONDS EAST, A DISTANCE OF 253.02 FEET;**

**THENCE SOUTH 70 DEGREES 15 MINUTES 02 SECONDS EAST, A DISTANCE OF 17.56 FEET TO THE SOUTHWEST CORNER OF THE PLAT FOR "PARCEL 9.5" AS RECORDED IN BOOK 1163, PAGE 09, M.C.R.;**

**THENCE SOUTH 70 DEGREES 15 MINUTES 02 SECONDS EAST, ALONG THE SOUTHERLY LINE, A DISTANCE OF 320.03 FEET;**

**THENCE NORTH 89 DEGREES 29 MINUTES 13 SECONDS EAST, A DISTANCE OF 108.08 FEET TO THE WESTERLY RIGHT OF WAY LINE OF SOUTH 182<sup>ND</sup> DRIVE, AS DENOTED ON THE MAP OF DEDICATION FOR "SOUTH 182ND DRIVE AND A PORTION OF WEST MOUNTAIN VISTA DRIVE" RECORDED IN BOOK 1059, PAGE 15, OFFICIAL RECORDS OF MARICOPA COUNTY, ARIZONA, HERE FORTH REFERENCED AS POINT "A";**

ASSESSMENT DIAGRAM FOR  
ESTRELLA MOUNTAIN RANCH COMMUNITY FACILITIES DISTRICT  
CITY OF GOODYEAR, ARIZONA  
SPECIAL ASSESSMENT REVENUE BONDS (SERIES 2015)  
**MONTECITO ASSESSMENT DISTRICT NO. 2**

**ASSESSMENT NO. 005-01-001 (AREA NO. 2)**

THENCE NORTH 82 DEGREES 57 MINUTES 39 SECONDS EAST, A DISTANCE OF 70.45 FEET TO THE EASTERLY RIGHT OF WAY LINE OF SAID SOUTH 182<sup>ND</sup> DRIVE, BEING THE POINT OF A NON TANGENT CURVE CONCAVE SOUTHEASTERLY, OF WHICH THE RADIUS POINT LIES SOUTH 84 DEGREES 54 MINUTES 12 SECONDS EAST, A RADIAL DISTANCE OF 1,970.00 FEET;

THENCE NORTHEASTERLY ALONG THE ARC OF SAID CURVE, THROUGH A CENTRAL ANGLE OF 11 DEGREES 26 MINUTES 12 SECONDS, A DISTANCE OF 393.22 FEET;

THENCE NORTH 36 DEGREES 32 MINUTES 00 SECONDS EAST, A DISTANCE OF 475.22 FEET TO A POINT OF CURVE TO THE LEFT HAVING A RADIUS OF 820.00 FEET;

THENCE NORTHEASTERLY ALONG THE ARC OF SAID CURVE, THROUGH A CENTRAL ANGLE OF 13 DEGREES 42 MINUTES 59 SECONDS, A DISTANCE OF 196.31 FEET TO THE SOUTHWEST CORNER OF THE PLAT FOR "PARCEL 9.26" AS RECORDED IN BOOK 1053, PAGE 49, M.C.R.;

THENCE SOUTH 32 DEGREES 49 MINUTES 54 SECONDS EAST, ALONG THE SOUTHERLY LINE OF SAID PLAT, A DISTANCE OF 157.09 FEET;

THENCE SOUTH 71 DEGREES 48 MINUTES 28 SECONDS EAST, A DISTANCE OF 452.63 FEET;

THENCE SOUTH 85 DEGREES 21 MINUTES 42 SECONDS EAST, A DISTANCE OF 581.65 FEET;

THENCE NORTH 04 DEGREES 38 MINUTES 18 SECONDS EAST, A DISTANCE OF 469.43 FEET;

THENCE NORTH 01 DEGREES 11 MINUTES 09 SECONDS EAST, A DISTANCE OF 514.97 FEET;

THENCE SOUTH 88 DEGREES 48 MINUTES 52 SECONDS EAST, DEPARTING SAID "PARCEL 9.26", A DISTANCE OF 1,171.66 FEET TO THE WESTERLY RIGHT OF WAY LINE OF MAP OF DEDICATION OF "ESTRELLA PARKWAY PHASE 3", AS RECORDED IN BOOK 771, PAGE 9, M.C.R., BEING A POINT OF A NON TANGENT CURVE CONCAVE EASTERLY, OF WHICH THE RADIUS POINT LIES NORTH 74 DEGREES 20 MINUTES 37 SECONDS EAST, A RADIAL DISTANCE OF 3,060.00 FEET;

THENCE SOUTHERLY ALONG THE ARC OF SAID CURVE, THROUGH A CENTRAL ANGLE OF 02 DEGREES 48 MINUTES 01 SECONDS, A DISTANCE OF 149.56 FEET;

THENCE SOUTH 14 DEGREES 37 MINUTES 34 SECONDS EAST, A DISTANCE OF 201.27 FEET TO A NON TANGENT CURVE TO THE LEFT, OF WHICH THE RADIUS POINT LIES NORTH 67 DEGREES 48 MINUTES 18 SECONDS EAST, A RADIAL DISTANCE OF 3,080.00 FEET;

THENCE SOUTHEASTERLY ALONG THE ARC OF SAID CURVE, THROUGH A CENTRAL ANGLE OF 00 DEGREES 46 MINUTES 57 SECONDS, A DISTANCE OF 42.06 FEET;

THENCE SOUTH 22 DEGREES 58 MINUTES 39 SECONDS EAST, A DISTANCE OF 327.16 FEET;

THENCE SOUTH 22 DEGREES 01 MINUTES 21 SECONDS WEST, A DISTANCE OF 28.28 FEET;

THENCE SOUTH 67 DEGREES 01 MINUTES 21 SECONDS WEST, ALONG THE NORTHERLY RIGHT OF WAY LINE OF WILLIS ROAD AS RECORDED IN BOOK 936, PAGE 01, M.C.R., A DISTANCE OF 614.71 FEET TO A POINT OF CURVE TO THE LEFT HAVING A RADIUS OF 2,700.00 FEET;



ASSESSMENT DIAGRAM FOR  
ESTRELLA MOUNTAIN RANCH COMMUNITY FACILITIES DISTRICT  
CITY OF GOODYEAR, ARIZONA  
SPECIAL ASSESSMENT REVENUE BONDS (SERIES 2015)  
**MONTECITO ASSESSMENT DISTRICT NO. 2**  
**ASSESSMENT NO. 005-01-001 (AREA NO. 2)**

THENCE SOUTHWESTERLY ALONG THE ARC OF SAID CURVE, THROUGH A CENTRAL ANGLE OF 34 DEGREES 50 MINUTES 00 SECONDS, A DISTANCE OF 1,641.49 FEET;

THENCE SOUTH 32 DEGREES 11 MINUTES 21 SECONDS WEST, A DISTANCE OF 844.47 FEET;

THENCE SOUTH 77 DEGREES 11 MINUTES 21 SECONDS WEST, A DISTANCE OF 28.28 FEET TO THE NORTHEASTERN MOST CORNER OF WEST MOUNTAIN VISTA DRIVE AS DENOTED ON THE MAP OF DEDICATION FOR "SOUTH 182ND DRIVE AND A PORTION OF WEST MOUNTAIN VISTA DRIVE" RECORDED IN BOOK 1059, PAGE 15, OFFICIAL RECORDS OF MARICOPA COUNTY, ARIZONA, HERE FORTH CALLED POINT "B";

THENCE SOUTH 32 DEGREES 11 MINUTES 21 SECONDS WEST, A DISTANCE OF 110.00 FEET;

THENCE SOUTH 12 DEGREES 48 MINUTES 39 SECONDS EAST, DISTANCE OF 28.28 FEET;

THENCE SOUTH 32 DEGREES 11 MINUTES 21 SECONDS WEST, A DISTANCE OF 175.08 FEET TO THE NORTHERLY LINE OF THAT PARCEL AS DESCRIBED IN DOCUMENT 2010-609133, M.C.R.;

THENCE SOUTH 62 DEGREES 08 MINUTES 56 SECONDS WEST, A DISTANCE OF 197.54 FEET;

THENCE SOUTH 60 DEGREES 41 MINUTES 25 SECONDS WEST, A DISTANCE OF 65.00 FEET TO A POINT OF CURVE TO THE LEFT HAVING A RADIUS OF 300.00 FEET;

THENCE SOUTHWESTERLY ALONG THE ARC OF SAID CURVE, THROUGH A CENTRAL ANGLE OF 13 DEGREES 34 MINUTES 13 SECONDS, A DISTANCE OF 71.05 FEET;

THENCE SOUTH 47 DEGREES 07 MINUTES 12 SECONDS WEST, A DISTANCE OF 50.28 FEET TO A POINT OF CURVE TO THE RIGHT HAVING A RADIUS OF 600.00 FEET;

THENCE SOUTHWESTERLY ALONG THE ARC OF SAID CURVE, THROUGH A CENTRAL ANGLE OF 22 DEGREES 33 MINUTES 42 SECONDS, A DISTANCE OF 236.27 FEET;

THENCE SOUTH 69 DEGREES 40 MINUTES 54 SECONDS WEST, A DISTANCE OF 64.00 FEET;

THENCE SOUTH 65 DEGREES 54 MINUTES 40 SECONDS WEST, A DISTANCE OF 188.61 FEET;

THENCE SOUTH 68 DEGREES 40 MINUTES 41 SECONDS WEST, A DISTANCE OF 250.00 FEET;

THENCE ALONG TO THE NORTHERLY LINE OF THAT PARCEL AS DESCRIBED IN DOCUMENT 2010-609134, M.C.R., SOUTH 68 DEGREES 40 MINUTES 41 SECONDS WEST, A DISTANCE OF 100.39 FEET;

THENCE SOUTH 72 DEGREES 19 MINUTES 59 SECONDS WEST, A DISTANCE OF 163.33 FEET;

THENCE SOUTH 82 DEGREES 25 MINUTES 30 SECONDS WEST, A DISTANCE OF 149.62 FEET;

THENCE SOUTH 78 DEGREES 35 MINUTES 11 SECONDS WEST, A DISTANCE OF 125.13 FEET;

ASSESSMENT DIAGRAM FOR  
ESTRELLA MOUNTAIN RANCH COMMUNITY FACILITIES DISTRICT  
CITY OF GOODYEAR, ARIZONA  
SPECIAL ASSESSMENT REVENUE BONDS (SERIES 2015)  
**MONTECITO ASSESSMENT DISTRICT NO. 2**  
**ASSESSMENT NO. 005-01-001 (AREA NO. 2)**

THENCE SOUTH 67 DEGREES 57 MINUTES 45 SECONDS WEST, A DISTANCE OF 97.84 FEET;

THENCE SOUTH 55 DEGREES 54 MINUTES 12 SECONDS WEST, A DISTANCE OF 48.78 FEET;

THENCE DEPARTING SAID NORTHERLY LINE, SOUTH 55 DEGREES 50 MINUTES 20 SECONDS WEST, A DISTANCE OF 273.84 FEET;

THENCE NORTH 89 DEGREES 38 MINUTES 54 SECONDS WEST, A DISTANCE OF 842.33 FEET TO THE EASTERLY LINE OF SAID 50' WIDE EASEMENT FOR EL PASO NATURAL GAS COMPANY, PER DOCUMENT NO. 2001-0753945;

THENCE NORTH 10 DEGREES 45 MINUTES 59 SECONDS EAST, A DISTANCE OF 2,327.80 FEET TO THE POINT OF BEGINNING.

**EXCEPT THAT PORTION OF SAID SOUTH 182ND DRIVE AND WEST MOUNTAIN VISTA DRIVE, AS FOLLOWS:**

BEGINNING AT THE AFOREMENTIONED POINT "B", BEING THE NORTHEASTERN MOST CORNER OF THE NORTHERLY RIGHT OF WAY LINE OF WEST MOUNTAIN VISTA DRIVE AS DENOTED ON THE MAP OF DEDICATION FOR "SOUTH 182ND DRIVE AND A PORTION OF WEST MOUNTAIN VISTA DRIVE" RECORDED IN BOOK 1059, PAGE 15, OFFICIAL RECORDS OF MARICOPA COUNTY, ARIZONA;

THENCE SOUTH 32 DEGREES 11 MINUTES 21 SECONDS WEST, A DISTANCE OF 110.00 FEET TO THE SOUTHERLY RIGHT OF WAY LINE OF SAID WEST MOUNTAIN VISTA DRIVE;

THENCE NORTH 57 DEGREES 48 MINUTES 39 SECONDS WEST, A DISTANCE OF 553.58 FEET TO A POINT OF CURVE TO THE LEFT HAVING A RADIUS OF 1,445.00 FEET;

THENCE NORTHWESTERLY ALONG THE ARC OF SAID CURVE, THROUGH A CENTRAL ANGLE OF 01 DEGREES 40 MINUTES 05 SECONDS, A DISTANCE OF 42.07 FEET;

THENCE SOUTH 74 DEGREES 28 MINUTES 53 SECONDS WEST, A DISTANCE OF 17.27 FEET;

THENCE NORTH 61 DEGREES 33 MINUTES 30 SECONDS WEST, A DISTANCE OF 80.00 FEET;

THENCE NORTH 17 DEGREES 35 MINUTES 54 SECONDS WEST, A DISTANCE OF 17.27 FEET TO THE POINT OF A NON TANGENT CURVE TO THE LEFT, OF WHICH THE RADIUS POINT LIES SOUTH 26 DEGREES 21 MINUTES 44 SECONDS WEST, A RADIAL DISTANCE OF 1,445.00 FEET;

THENCE WESTERLY ALONG THE ARC OF SAID CURVE, THROUGH A CENTRAL ANGLE OF 39 DEGREES 18 MINUTES 44 SECONDS, A DISTANCE OF 991.45 FEET;

THENCE SOUTH 77 DEGREES 03 MINUTES 00 SECONDS WEST, A DISTANCE OF 127.74 FEET;

THENCE SOUTH 32 DEGREES 03 MINUTES 00 SECONDS WEST, A DISTANCE OF 16.97 FEET;

ASSESSMENT DIAGRAM FOR  
ESTRELLA MOUNTAIN RANCH COMMUNITY FACILITIES DISTRICT  
CITY OF GOODYEAR, ARIZONA  
SPECIAL ASSESSMENT REVENUE BONDS (SERIES 2015)  
**MONTECITO ASSESSMENT DISTRICT NO. 2**  
**ASSESSMENT NO. 005-01-001 (AREA NO. 2)**

THENCE SOUTH 77 DEGREES 03 MINUTES 00 SECONDS WEST, A DISTANCE OF 80.00 FEET;

THENCE NORTH 57 DEGREES 57 MINUTES 00 SECONDS WEST, A DISTANCE OF 16.97 FEET;

THENCE SOUTH 77 DEGREES 03 MINUTES 00 SECONDS WEST, A DISTANCE OF 785.39 FEET TO THE EASTERLY RIGHT OF WAY LINE OF A 50' WIDE GAS EASEMENT FOR EL PASO GAS COMPANY, PER DOCUMENT NO. 2001-0753945, M.C.R.;

THENCE NORTH 10 DEGREES 45 MINUTES 59 SECONDS EAST, A DISTANCE OF 120.15 FEET TO THE NORTHERLY RIGHT OF WAY LINE OF SAID WEST MOUNTAIN VISTA DRIVE;

THENCE NORTH 77 DEGREES 03 MINUTES 00 SECONDS EAST, DEPARTING SAID GAS EASEMENT, A DISTANCE OF 737.06 FEET;

THENCE NORTH 32 DEGREES 03 MINUTES 00 SECONDS EAST, A DISTANCE OF 16.97 FEET;

THENCE NORTH 77 DEGREES 03 MINUTES 00 SECONDS EAST, A DISTANCE OF 80.00 FEET;

THENCE SOUTH 57 DEGREES 57 MINUTES 00 SECONDS EAST, A DISTANCE OF 16.97 FEET;

THENCE NORTH 77 DEGREES 03 MINUTES 00 SECONDS EAST, A DISTANCE OF 127.74 FEET TO A POINT OF CURVE TO THE RIGHT HAVING A RADIUS OF 1,555.00 FEET;

THENCE EASTERLY ALONG THE ARC OF SAID CURVE, THROUGH A CENTRAL ANGLE OF 19 DEGREES 34 MINUTES 13 SECONDS, A DISTANCE OF 531.14 FEET;

THENCE NORTH 52 DEGREES 51 MINUTES 50 SECONDS EAST, A DISTANCE OF 35.84 FEET TO THE WESTERLY RIGHT OF WAY LINE OF SAID SOUTH 182ND DRIVE;

THENCE NORTH 08 DEGREES 38 MINUTES 49 SECONDS EAST, A DISTANCE OF 110.71 FEET TO A POINT OF CURVE TO THE RIGHT HAVING A RADIUS OF 2,030.00 FEET;

THENCE NORTHERLY ALONG THE ARC OF SAID CURVE, THROUGH A CENTRAL ANGLE OF 15 DEGREES 23 MINUTES 32 SECONDS, A DISTANCE OF 545.35 FEET TO THE AFOREMENTIONED POINT "A";

THENCE SOUTH 65 DEGREES 57 MINUTES 39 SECONDS EAST, A DISTANCE OF 60.00 FEET TO THE POINT OF A NON TANGENT CURVE CONCAVE SOUTHEAST, OF WHICH THE RADIUS POINT LIES SOUTH 65 DEGREES 57 MINUTES 39 SECONDS EAST, A RADIAL DISTANCE OF 1,970.00 FEET;

THENCE NORTHEASTERLY ALONG THE ARC OF SAID CURVE, THROUGH A CENTRAL ANGLE OF 01 DEGREES 03 MINUTES 28 SECONDS, A DISTANCE OF 36.37 FEET TO THE EASTERLY RIGHT OF WAY LINE OF SAID 182ND DRIVE, BEING A POINT OF A NON TANGENT CURVE CONCAVE EAST, OF WHICH THE RADIUS POINT LIES SOUTH 64 DEGREES 54 MINUTES 11 SECONDS EAST, A RADIAL DISTANCE OF 20.00 FEET;



ASSESSMENT DIAGRAM FOR  
ESTRELLA MOUNTAIN RANCH COMMUNITY FACILITIES DISTRICT  
CITY OF GOODYEAR, ARIZONA  
SPECIAL ASSESSMENT REVENUE BONDS (SERIES 2015)  
**MONTECITO ASSESSMENT DISTRICT NO. 2**

**ASSESSMENT NO. 005-01-001 (AREA NO. 2)**

THENCE SOUTHERLY ALONG THE ARC OF SAID CURVE, THROUGH A CENTRAL ANGLE OF 91 DEGREES 31 MINUTES 05 SECONDS, A DISTANCE OF 31.95 FEET TO A NON TANGENT LINE;

THENCE SOUTH 23 DEGREES 34 MINUTES 08 SECONDS WEST, A DISTANCE OF 64.00 FEET TO THE POINT OF A NON TANGENT CURVE CONCAVE SOUTH, OF WHICH THE RADIUS POINT LIES SOUTH 23 DEGREES 33 MINUTES 32 SECONDS WEST, A RADIAL DISTANCE OF 20.00 FEET;

THENCE WESTERLY ALONG THE ARC OF SAID CURVE, THROUGH A CENTRAL ANGLE OF 91 DEGREES 31 MINUTES 05 SECONDS, A DISTANCE OF 31.95 FEET TO A COMPOUND CURVE TO THE LEFT HAVING A RADIUS OF 1,970.00 FEET;

THENCE SOUTHERLY ALONG THE ARC OF SAID CURVE, THROUGH A CENTRAL ANGLE OF 13 DEGREES 23 MINUTES 38 SECONDS, A DISTANCE OF 460.52 FEET;

THENCE SOUTH 08 DEGREES 38 MINUTES 49 SECONDS WEST, A DISTANCE OF 110.71 FEET;

THENCE SOUTH 35 DEGREES 34 MINUTES 12 SECONDS EAST, A DISTANCE OF 35.84 FEET TO THE NORTHERLY RIGHT OF WAY LINE OF SAID WEST MOUNTAIN VISTA DRIVE, BEING A POINT OF A NON TANGENT CURVE CONCAVE SOUTHWESTERLY, OF WHICH THE RADIUS POINT LIES SOUTH 10 DEGREES 40 MINUTES 25 SECONDS WEST, A RADIAL DISTANCE OF 1,555.00 FEET;

THENCE EASTERLY ALONG THE ARC OF SAID CURVE, THROUGH A CENTRAL ANGLE OF 15 DEGREES 51 MINUTES 59 SECONDS, A DISTANCE OF 430.61 FEET;

THENCE NORTH 72 DEGREES 29 MINUTES 27 SECONDS EAST, A DISTANCE OF 16.69 FEET;

THENCE SOUTH 61 DEGREES 33 MINUTES 30 SECONDS EAST, A DISTANCE OF 80.00 FEET;

THENCE SOUTH 15 DEGREES 36 MINUTES 27 SECONDS EAST, A DISTANCE OF 16.69 FEET TO THE POINT OF A NON TANGENT CURVE CONCAVE SOUTHWESTERLY, OF WHICH THE RADIUS POINT LIES SOUTH 30 DEGREES 20 MINUTES 36 SECONDS WEST, A RADIAL DISTANCE OF 1,555.00 FEET;

THENCE SOUTHEASTERLY ALONG THE ARC OF SAID CURVE, THROUGH A CENTRAL ANGLE OF 01 DEGREES 50 MINUTES 45 SECONDS, A DISTANCE OF 50.09 FEET;

THENCE SOUTH 57 DEGREES 48 MINUTES 39 SECONDS EAST, A DISTANCE OF 553.58 FEET TO THE POINT OF BEGINNING OF THE EXCEPTION HEREIN DESCRIBED.

## **EXHIBIT 'B'**

NEW LEGAL FOR ASSESSMENT 005-02-001 THROUGH 005-02-042  
PER FINAL PLAT RECORDED IN BOOK 1464, PAGE 3 M.C.R.

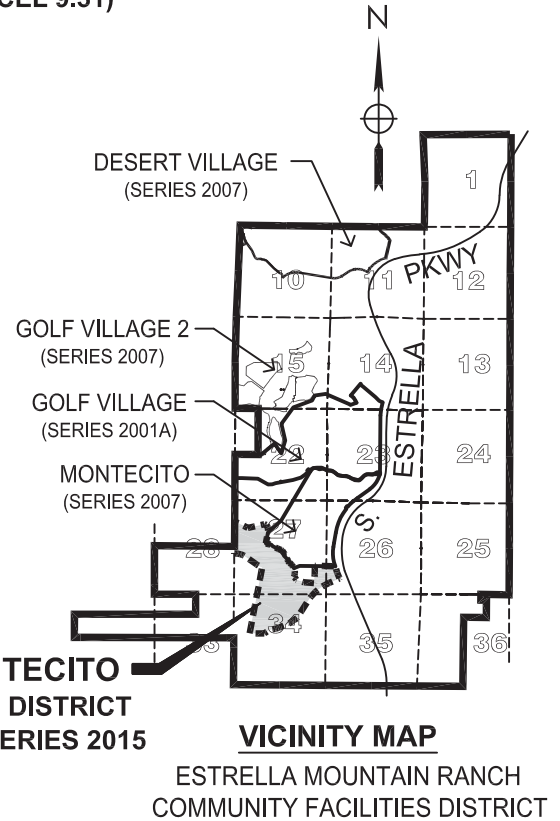
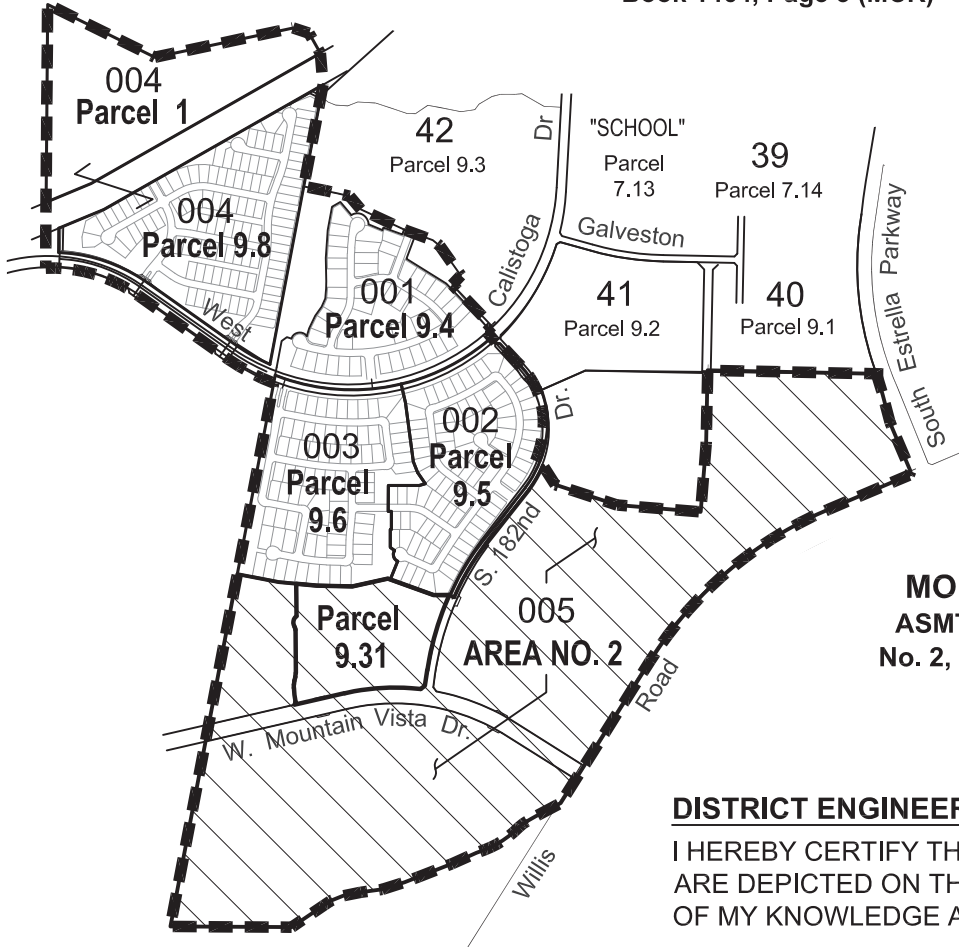
AND

LEGAL DESCRIPTION FOR REMAINDER 005-02-043

# EXHIBIT B MODIFICATION OF ASSESSMENT

For  
Estrella Mountain Ranch Community Facilities District, (City of Goodyear, Arizona)  
**MONTECITO ASSESSMENT DISTRICT NO. 2**  
ASSESSMENT NUMBER 005-01-001 (PARCEL 9.31)

"ESTRELLA Parcel 9.31"  
Book 1464, Page 3 (MCR)



**MONTECITO**  
ASMT. DISTRICT  
No. 2, SERIES 2015

**VICINITY MAP**  
ESTRELLA MOUNTAIN RANCH  
COMMUNITY FACILITIES DISTRICT

## DISTRICT ENGINEER CERTIFICATION

I HEREBY CERTIFY THAT THE PARCEL BOUNDARIES SHOWN  
ARE DEPICTED ON THIS PLAN ARE CORRECT TO THE BEST  
OF MY KNOWLEDGE AND BELIEF.

## DESCRIPTION

A PORTION OF SECTIONS 26, 27 AND 34,  
TOWNSHIP 1 SOUTH, RANGE 2 WEST OF  
THE GILA AND SALT RIVER BASE AND  
MERIDIAN, MARICOPA COUNTY, ARIZONA.

## LEGEND

- MONTECITO ASSESSMENT  
DISTRICT NO. 2
- 000 ASSESSMENT NUMBER
- ▨▨▨▨ ASSESSMENT NO. 005

ASSESSMENT NO.	PARCEL	LOTS	ACREAGE
001-01-170 to 001-01-216	9.4	47	24.9
002-01-217 to 002-01-308	9.5	92	29.2
003-01-309 to 003-01-388	9.6	80	31.9
004-01-001	9.8 & N0.1	129	64.7
005-01-001	Area No. 2		179.8
004-02-001 to 004-02-107	9.8 & N0.1	106	
005-02-001 to 005-02-042	9.31	42	8.5
005-02-043	Area NO. 2		171.3

ENGINEER

DATE

APPROVED BY RESOLUTION NO. \_\_\_\_\_ AT MEETING OF THE  
BOARD OF DIRECTORS OF THE ESTRELLA MOUNTAIN RANCH  
COMMUNITY FACILITIES DISTRICT (CITY OF GOODYEAR,  
ARIZONA) ON THE \_\_\_\_\_ DAY OF \_\_\_\_\_ 2019.

DISTRICT CLERK

DATE

SIGNED: THIS \_\_\_\_\_ DAY OF \_\_\_\_\_, 2019

SUBMITTED: \_\_\_\_\_  
SUPERINTENDENT OF STREETS DATE



EXHIBIT B  
MODIFICATION OF ASSESSMENT

For  
Estrella Mountain Ranch Community Facilities District, City of Goodyear, Arizona  
MONTECITO ASSESSMENT DISTRICT NO. 2  
ASSESSMENT NUMBER 005-01-001 (PARCEL 9.31)

"ESTRELLA Parcel 9.31"  
Book 1464, Page 3 (MCR)



MONTECITO  
SPECIAL ASSESSMENT DISTRICT NO. 2  
ASSESSMENT NO. 005-02-043  
AREA NO. 2  
(SHEET 3 OF 4)

**ASSESSMENT NO.**  
**005-02-001 through 005-02-042**

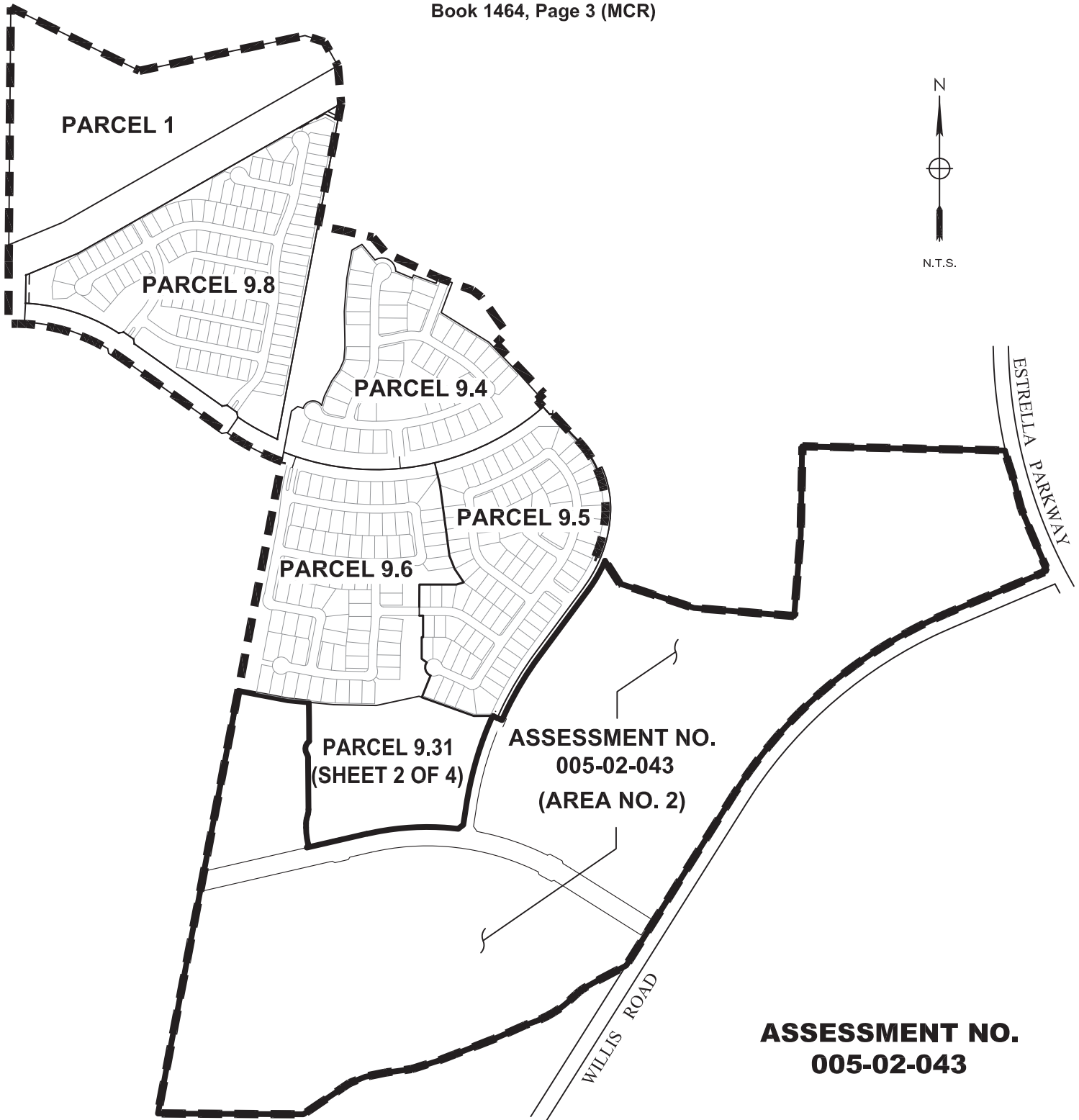




**EXHIBIT B**  
**MODIFICATION OF ASSESSMENT**

For  
**Estrella Mountain Ranch Community Facilities District, City of Goodyear, Arizona**  
**MONTECITO ASSESSMENT DISTRICT NO. 2**  
**ASSESSMENT NUMBER 005-01-001 (PARCEL 9.31)**

"ESTRELLA Parcel 9.31"  
Book 1464, Page 3 (MCR)



**ASSESSMENT NO.**  
**005-02-043**



**EXHIBIT B**  
**MODIFICATION OF ASSESSMENT**

For  
**Estrella Mountain Ranch Community Facilities District, City of Goodyear, Arizona**  
**MONTECITO ASSESSMENT DISTRICT NO. 2**  
**ASSESSMENT NUMBER 005-01-001 (PARCEL 9.31)**

**"ESTRELLA Parcel 9.31"**  
**Book 1464, Page 3 (MCR)**

LOT NO.	ASSESSMENT NO.	LOT AREA (SF)	ASSESSMENT LIEN PER LOT
1	005-02-001	8,345	\$ 5,805.61
2	005-02-002	8,588	\$ 5,805.61
3	005-02-003	8,125	\$ 5,805.61
4	005-02-004	8,125	\$ 5,805.61
5	005-02-005	8,125	\$ 5,805.61
6	005-02-006	8,125	\$ 5,805.61
7	005-02-007	8,125	\$ 5,805.61
8	005-02-008	8,125	\$ 5,805.61
9	005-02-009	8,125	\$ 5,805.61
10	005-02-010	8,125	\$ 5,805.61
11	005-02-011	8,125	\$ 5,805.61
12	005-02-012	8,125	\$ 5,805.61
13	005-02-013	8,818	\$ 5,805.61
14	005-02-014	9,239	\$ 5,805.61
15	005-02-015	8,656	\$ 5,805.61
16	005-02-016	8,125	\$ 5,805.61
17	005-02-017	8,125	\$ 5,805.61
18	005-02-018	8,125	\$ 5,805.61
19	005-02-019	8,125	\$ 5,805.61
20	005-02-020	8,125	\$ 5,805.61
21	005-02-021	8,125	\$ 5,805.61
22	005-02-022	8,125	\$ 5,805.61
23	005-02-023	8,123	\$ 5,805.61
24	005-02-024	8,125	\$ 5,805.61
25	005-02-025	8,125	\$ 5,805.61
26	005-02-026	8,125	\$ 5,805.61
27	005-02-027	8,125	\$ 5,805.61
28	005-02-028	8,125	\$ 5,805.61
29	005-02-029	8,125	\$ 5,805.61
30	005-02-030	8,125	\$ 5,805.61
31	005-02-031	8,125	\$ 5,805.61
32	005-02-032	8,123	\$ 5,805.61
33	005-02-033	8,123	\$ 5,805.61
34	005-02-034	8,125	\$ 5,805.61
35	005-02-035	8,125	\$ 5,805.61
36	005-02-036	8,125	\$ 5,805.61
37	005-02-037	8,125	\$ 5,805.61
38	005-02-038	8,125	\$ 5,805.61
39	005-02-039	8,125	\$ 5,805.61
40	005-02-040	8,125	\$ 5,805.61
41	005-02-041	8,125	\$ 5,805.61
42	005-02-042	8,123	\$ 5,805.61

LOT NO.	ASSESSMENT NO.	LOT AREA (SF)	ASSESSMENT LIEN PER LOT
Area 2	005-02-043	7,464,690	\$ 2,345,464.40



**EXHIBIT B**

September 4, 2019

**ASSESSMENT 005-02-043 (AREA 2)**

**Estrella Mountain Ranch Community Facilities District –  
Montecito Special Assessment District  
Goodyear, Arizona**

A PORTION OF SECTIONS 26, 27 AND 34, OF TOWNSHIP 1 SOUTH, RANGE 2 WEST, OF THE GILA AND SALT RIVER BASE AND MERIDIAN, MARICOPA COUNTY, ARIZONA, BEING MORE PARTICULARLY DESCRIBED AS FOLLOWS:

**COMMENCING** AT A G.L.O. BRASS CAP MARKING THE SOUTHWEST CORNER OF SAID SECTION 27, TOWNSHIP 1 SOUTH, RANGE 2 WEST, FROM WHICH THE SOUTH QUARTER CORNER OF SAID SECTION 27 BEARS SOUTH 89°34'33" EAST, A DISTANCE OF 2634.60 FEET;

THENCE SOUTH 89°34'33" EAST, A DISTANCE OF 1,309.01 FEET TO THE EASTERLY RIGHT OF WAY LINE OF A 50' WIDE EASEMENT FOR EL PASO GAS COMPANY, PER DOCUMENT NO. 2001-0753945, MARICOPA COUNTY RECORDS (MCR), BEING ALSO THE **POINT OF BEGINNING** OF THE PARCEL HEREIN DESCRIBED;

THENCE NORTH 10°45'59" EAST, ALONG SAID EASTERLY RIGHT OF WAY LINE, A DISTANCE OF 161.96 FEET TO THE SOUTHWEST CORNER OF THE PLAT FOR "PARCEL 9.6" AS RECORDED IN BOOK 1179, PAGE 32, MCR;

THENCE SOUTH 79°14'00" EAST, ALONG THE SOUTHERLY LINE OF SAID PLAT, A DISTANCE OF 292.62 FEET;

THENCE SOUTH 84°37'33" EAST, A DISTANCE OF 121.74 FEET;

THENCE SOUTH 0°29'54" EAST, A DISTANCE OF 96.30 FEET;

THENCE SOUTH 0°29'54" EAST, A DISTANCE OF 128.80 FEET, TO THE BEGINNING OF A NON-TANGENT CURVE TO THE LEFT, HAVING A RADIUS POINT BEARING SOUTH 36°31'11" EAST, A DISTANCE OF 55.00 FEET;

THENCE SOUTHERLY, A DISTANCE OF 84.03 FEET, ALONG SAID CURVE, THROUGH A CENTRAL ANGLE OF 87°32'09", SAID CURVE HAVING A CHORD OF SOUTH 9°42'45" WEST, A DISTANCE OF 76.09 FEET, TO THE BEGINNING OF A REVERSE CURVE TO THE RIGHT, HAVING A RADIUS OF 35.00 FEET;

Land Planning | Hydrology | Land Development | Civil Infrastructure | Land Surveying | Construction Services

6245 N 24th Parkway, Suite 100, Phoenix, AZ 85016-2029 | Office (602)252.8384 | Fax (602)252.8385 | [www.hoskinryan.com](http://www.hoskinryan.com)  
Hoskin Ryan dba Hoskin Ryan Consulting, LLC.

g:\projects\18\phoenix\1-18-004 estrella\14 - on-call\tasks\new cfd legal\survey\legals-certifications\lg-emr-new cfd 190903.docx

## EXHIBIT B



THENCE SOUTHERLY, A DISTANCE OF 20.50 FEET, ALONG SAID CURVE, THROUGH A CENTRAL ANGLE OF 33°33'26", SAID CURVE HAVING A CHORD OF SOUTH 17°16'37" EAST, A DISTANCE OF 20.21 FEET;

THENCE SOUTH 0°29'54" EAST, A DISTANCE OF 300.96 FEET, TO THE BEGINNING OF A CURVE TO THE RIGHT, HAVING A RADIUS OF 100.00 FEET;

THENCE SOUTHWESTERLY, A DISTANCE OF 27.50 FEET, ALONG SAID CURVE, THROUGH A CENTRAL ANGLE OF 15°45'13", SAID CURVE HAVING A CHORD OF SOUTH 7°22'42" WEST, A DISTANCE OF 27.41 FEET;

THENCE SOUTH 15°15'18" WEST, A DISTANCE OF 27.58 FEET, TO THE BEGINNING OF A CURVE TO THE LEFT, HAVING A RADIUS OF 100.00 FEET;

THENCE SOUTHERLY, A DISTANCE OF 27.50 FEET, ALONG SAID CURVE, THROUGH A CENTRAL ANGLE OF 15°45'13", SAID CURVE HAVING A CHORD OF SOUTH 7°22'41" WEST, A DISTANCE OF 27.41 FEET;

THENCE SOUTH 0°29'54" EAST, A DISTANCE OF 23.08 FEET, TO THE BEGINNING OF A CURVE TO THE LEFT, HAVING A RADIUS OF 440.00 FEET;

THENCE SOUTHEASTERLY, A DISTANCE OF 95.62 FEET, ALONG SAID CURVE, THROUGH A CENTRAL ANGLE OF 12°27'06", SAID CURVE HAVING A CHORD OF SOUTH 6°43'27" EAST, A DISTANCE OF 95.43 FEET;

THENCE SOUTH 12°57'00" EAST, A DISTANCE OF 7.28 FEET;

THENCE SOUTH 32°03'26" WEST, A DISTANCE OF 16.97 FEET, TO A POINT ON THE NORTH RIGHT OF WAY OF WEST MOUNTAIN VISTA DRIVE, AS SHOWN ON THE FINAL PLAT FOR "ESTRELLA PARCEL 9.31", RECORDED AS BOOK 1464, PAGE 3, MCR;

THENCE ALONG SAID NORTH RIGHT OF WAY LINE OF WEST MOUNTAIN VISTA DRIVE THE NEXT THREE COURSES;

NORTH 77°03'00" EAST, A DISTANCE OF 358.75 FEET, TO THE BEGINNING OF A CURVE TO THE RIGHT, HAVING A RADIUS OF 1,555.00 FEET;

THENCE EASTERLY, A DISTANCE OF 531.13 FEET, ALONG SAID CURVE, THROUGH A CENTRAL ANGLE OF 19°34'13", SAID CURVE HAVING A CHORD OF NORTH 86°50'07" EAST, A DISTANCE OF 528.56 FEET;

THENCE NORTH 52°51'50" EAST, A DISTANCE OF 35.84 FEET TO A POINT ALSO BEING ON THE WEST RIGHT OF WAY OF SOUTH 182ND DRIVE, AS SHOWN ON THE FINAL PLAT FOR "ESTRELLA PARCEL 9.31", RECORDED AS BOOK 1464, PAGE 3, MCR;

THENCE ALONG SAID WEST RIGHT OF WAY LINE OF SOUTH 182ND DRIVE THE NEXT TWO COURSES;

NORTH 8°38'49" EAST, A DISTANCE OF 110.71 FEET, TO THE BEGINNING OF A CURVE TO THE RIGHT, HAVING A RADIUS OF 2,030.00 FEET;



## EXHIBIT B

Page 3 of 5



THENCE NORTHEASTERLY, A DISTANCE OF 545.35 FEET, ALONG SAID CURVE, THROUGH A CENTRAL ANGLE OF  $15^{\circ}23'32''$ , SAID CURVE HAVING A CHORD OF NORTH  $16^{\circ}20'35''$  EAST, A DISTANCE OF 543.71 FEET;

THENCE SOUTH  $65^{\circ}57'39''$  EAST, A DISTANCE OF 60.00 FEET, TO THE EASTERLY RIGHT OF WAY LINE OF SAID SOUTH 182ND DRIVE, AS SHOWN IN BOOK 1059, PAGE 15, MCR, TO A NON-TANGENT CURVE TO THE RIGHT, HAVING A RADIUS POINT BEARING SOUTH  $65^{\circ}57'39''$  EAST, A DISTANCE OF 1,970.00 FEET;

THENCE NORTHEASTERLY, A DISTANCE OF 429.59 FEET ALONG SAID CURVE, THROUGH A CENTRAL ANGLE OF  $12^{\circ}29'39''$ , SAID CURVE HAVING A CHORD OF NORTH  $30^{\circ}17'10''$  EAST, A DISTANCE OF 428.74 FEET;

THENCE NORTH  $36^{\circ}32'00''$  EAST, A DISTANCE OF 475.22 FEET TO THE BEGINNING OF A CURVE TO THE LEFT, HAVING A RADIUS OF 820.00 FEET;

THENCE NORTHEASTERLY, A DISTANCE OF 196.31 FEET, ALONG SAID CURVE, THROUGH A CENTRAL ANGLE OF  $13^{\circ}42'59''$ , SAID CURVE HAVING A CHORD OF NORTH  $29^{\circ}40'30''$  EAST, A DISTANCE OF 195.84 FEET, TO THE SOUTHWEST CORNER OF THE PLAT FOR "PARCEL 9.26" AS RECORDED IN BOOK 1053, PAGE 49, MCR;

THENCE ALONG THE SOUTH AND EAST BOUNDARY OF SAID PLAT "PARCEL 9.26" THE NEXT FIVE COURSES;

SOUTH  $32^{\circ}49'54''$  EAST, ALONG THE SOUTHERLY LINE OF SAID PLAT, A DISTANCE OF 157.09 FEET;

THENCE SOUTH  $71^{\circ}48'28''$  EAST, A DISTANCE OF 452.63 FEET;

THENCE SOUTH  $85^{\circ}21'42''$  EAST, A DISTANCE OF 581.65 FEET;

THENCE NORTH  $04^{\circ}38'18''$  EAST, A DISTANCE OF 469.43 FEET;

THENCE NORTH  $01^{\circ}11'09''$  EAST, A DISTANCE OF 514.97 FEET;

THENCE SOUTH  $88^{\circ}48'52''$  EAST, DEPARTING SAID "PARCEL 9.26", A DISTANCE OF 1,171.66 FEET TO THE WESTERLY RIGHT OF WAY LINE OF MAP OF DEDICATION OF "ESTRELLA PARKWAY PHASE 3", AS RECORDED IN BOOK 771, PAGE 9, MCR, TO THE BEGINNING OF A NON-TANGENT CURVE TO THE LEFT, HAVING A RADIUS POINT BEARING NORTH  $74^{\circ}20'37''$  EAST, A DISTANCE OF 3,060.00 FEET;

THENCE SOUTHERLY, A DISTANCE OF 149.56 FEET, ALONG SAID CURVE, THROUGH A CENTRAL ANGLE OF  $02^{\circ}48'01''$ , SAID CURVE HAVING A CHORD OF SOUTH  $17^{\circ}03'23''$  EAST, A DISTANCE OF 149.54 FEET;

THENCE SOUTH  $14^{\circ}37'34''$  EAST, A DISTANCE OF 201.27 FEET, TO THE BEGINNING OF A NON-TANGENT CURVE TO THE LEFT, HAVING A RADIUS POINT BEARING NORTH  $67^{\circ}48'18''$  EAST, A DISTANCE OF 3,080.00 FEET;

THENCE SOUTHERLY, A DISTANCE OF 42.06 FEET, ALONG SAID CURVE, THROUGH A CENTRAL ANGLE OF  $0^{\circ}46'57''$ , SAID CURVE HAVING A CHORD OF SOUTH  $22^{\circ}35'11''$  EAST, A DISTANCE OF 42.06 FEET;

## EXHIBIT B



THENCE SOUTH 22°58'39" EAST, A DISTANCE OF 327.16 FEET;

THENCE SOUTH 22°01'21" WEST, A DISTANCE OF 28.28 FEET, TO A POINT ON THE NORTH RIGHT OF WAY LINE OF WILLIS ROAD AS RECORDED IN BOOK 936, PAGE 01, MCR;

THENCE SOUTH 67°01'21" WEST, ALONG THE SAID NORTHERLY RIGHT OF WAY LINE OF WILLIS ROAD, A DISTANCE OF 614.71 FEET, TO THE BEGINNING OF A CURVE TO THE LEFT, HAVING A RADIUS OF 2,700.00 FEET;

THENCE SOUTHWESTERLY, A DISTANCE OF 1,641.49 FEET, ALONG SAID CURVE, THROUGH A CENTRAL ANGLE OF 34°50'00", SAID CURVE HAVING A CHORD OF SOUTH 49°36'21" WEST, A DISTANCE OF 1,616.32 FEET;

THENCE SOUTH 32°11'21" WEST, A DISTANCE OF 1,169.55 FEET;

THENCE SOUTH 62°08'56" WEST, A DISTANCE OF 197.54 FEET;

THENCE SOUTH 60°41'25" WEST, A DISTANCE OF 65.00 FEET, TO THE BEGINNING OF A CURVE TO THE LEFT, HAVING A RADIUS OF 300.00 FEET;

THENCE SOUTHWESTERLY, A DISTANCE OF 71.05 FEET, ALONG SAID CURVE, THROUGH A CENTRAL ANGLE OF 13°34'13", SAID CURVE HAVING A CHORD OF SOUTH 53°54'19" WEST, A DISTANCE OF 70.89 FEET;

THENCE SOUTH 47°07'12" WEST, A DISTANCE OF 50.28 FEET, THE BEGINNING OF A CURVE TO THE RIGHT, HAVING A RADIUS OF 600.00 FEET;

THENCE SOUTHWESTERLY, A DISTANCE OF 236.27 FEET, ALONG SAID CURVE, THROUGH A CENTRAL ANGLE OF 22°33'42", SAID CURVE HAVING A CHORD OF SOUTH 58°24'03" WEST, A DISTANCE OF 234.74 FEET;

THENCE SOUTH 69°40'54" WEST, A DISTANCE OF 64.00 FEET;

THENCE SOUTH 65°54'40" WEST, A DISTANCE OF 188.61 FEET;

THENCE SOUTH 68°40'41" WEST, A DISTANCE OF 250.00 FEET, TO A POINT ON THE NORTH LINE OF THE PARCEL DESCRIBED IN 2010-609134, MCR;

THENCE, ALONG SAID NORTHERLY LINE THE NEXT SIX COURSES;

SOUTH 68°40'41" WEST, A DISTANCE OF 100.39 FEET;

THENCE SOUTH 72°19'59" WEST, A DISTANCE OF 163.33 FEET;

THENCE SOUTH 82°25'30" WEST, A DISTANCE OF 149.62 FEET;

## EXHIBIT B



THENCE SOUTH 78°35'11" WEST, A DISTANCE OF 125.13 FEET;

THENCE SOUTH 67°57'45" WEST, A DISTANCE OF 97.84 FEET;

THENCE SOUTH 55°54'12" WEST, A DISTANCE OF 48.78 FEET;

THENCE, DEPARTING SAID NORTHERLY LINE, SOUTH 55°50'20" WEST, A DISTANCE OF 273.84 FEET;

THENCE NORTH 89°38'54" WEST, A DISTANCE OF 842.33 FEET, TO THE EASTERLY LINE OF SAID 50' WIDE EASEMENT FOR EL PASO NATURAL GAS COMPANY, PER DOCUMENT NO. 2001-0753945, MCR;

THENCE NORTH 10°45'59" EAST, ALONG THE EASTERLY LINE OF SAID 50' WIDE EASEMENT, A DISTANCE OF 2,327.80 FEET TO THE **POINT OF BEGINNING**.

CONTAINING 7,464,689.81 SQUARE FEET OR 171.366 ACRES MORE OR LESS.



## **EXHIBIT 'C'**

### **ESTRELLA MOUNTAIN RANCH COMMUNITY FACILITIES DISTRICT (CITY OF GOODYEAR, ARIZONA)**

#### **SPECIAL ASSESSMENT REVENUE BONDS (SERIES 2015) MONTECITO ASSESSMENT DISTRICT NO. 2**

#### **ORIGINAL ASSESSMENT NUMBER AND AMOUNT**

<b>Number:</b>	<b>Amount:</b>
<b><u>005-01-001</u></b>	<b><u>\$ 2,589,300.00</u></b>

#### **REQUESTED MODIFICATION ASSESSMENT NUMBER AND AMOUNT**

<b>Number:</b>	<b>Amount:</b>
<b><u>005-02-001 Through 005-02-042</u></b>	<b><u>\$ 5,805.61</u> each lot</b>

<b><u>005-02-043</u></b>	<b><u>\$ 2,345,464.40</u></b>
--------------------------	-------------------------------