

RESOLUTION NO. EMRCFD RES 2019-132

A RESOLUTION OF THE BOARD OF DIRECTORS OF ESTRELLA MOUNTAIN RANCH COMMUNITY FACILITIES DISTRICT (CITY OF GOODYEAR, ARIZONA) APPROVING THE MODIFICATION OF ASSESSMENTS IN ASSESSMENT NUMBER 30 WITHIN MONTECITO ASSESSMENT DISTRICT.

WHEREAS, pursuant to A.R.S. § 48-594(B), the Superintendent of Streets of Estrella Mountain Ranch Community Facilities District (City of Goodyear, Arizona), Montecito Assessment District (the "*Assessment District*"), has prepared a list of assessments on certain property within the Assessment District, which assessments are to be modified, including (a) the assessment number, legal description and amount assessed on each affected lot or parcel before the modification, (b) the assessment number, legal description and name and address of the owner as shown on the most recent tax roll, and (c) the amount to be assessed on each lot or parcel after modification; and

WHEREAS, the Superintendent of Streets has caused to be prepared and presented to the Board of Directors (the "*District Board*") of the Estrella Mountain Ranch Community Facilities District (City of Goodyear, Arizona) (the "*District*") an amendment to the Assessment Diagram reflecting the requested modification; and

WHEREAS, the Superintendent of Streets has caused a notice to be mailed to the sole owner of the affected parcel showing the proposed reallocation and stating that the owner may file a written objection to the reallocation within twenty days after the notice was mailed; and

WHEREAS, no objections to the reallocation of the assessment have been received during the time provided by law; and

WHEREAS, the District Board has considered the matter and has the advice of its Superintendent of Streets with respect to the improvements constructed and the assessments levied for the Assessment District;

NOW, THEREFORE, BE IT RESOLVED BY THE BOARD OF DIRECTORS OF ESTRELLA MOUNTAIN RANCH COMMUNITY FACILITIES DISTRICT (CITY OF GOODYEAR, ARIZONA), AS FOLLOWS:

Section 1. Pursuant to A.R.S. § 48-594(B) and the petition submitted by the property owner, and good cause appearing therefore, it is hereby ordered that assessment 30 (Parcel 7.1) be modified in accordance with the assessment modification submitted by the Superintendent of Streets.

Section 2. The amended Assessment Diagram is approved with such modifications as are set forth on Exhibit A attached hereto.

Section 3. The District Board hereby directs the Superintendent of Streets to record the modified assessment and amended Assessment Diagram in the Superintendent of

Streets' office pursuant to A.R.S. § 48-594(B) and record the amended notice of recording of assessment in the records of Maricopa County, Arizona.

Section 4. The modified assessment numbers will now be 030-01-001 through and including 030-01-080.

Section 5. The costs of the modification shall be paid by the property owner requesting this modification, or, if not so paid, shall be included in the amount of the assessment, as modified, and, if not sooner paid, shall be included in the next installment of the assessment due with respect to the affected parcels.

PASSED AND ADOPTED by the Board of Directors of Estrella Mountain Ranch Community Facilities District (City of Goodyear, Arizona) this 2nd day of December, 2019.

District Chairman

ATTEST:

District Clerk

APPROVED AS TO FORM:

Gust Rosenfeld P.L.C.
District Counsel

I hereby certify that I have checked the legal descriptions with respect to modifications of the assessments above-numbered and that the modifications set forth on the attached legal descriptions are acceptable to me.

Superintendent of Streets

STATE OF ARIZONA)
) ss.
County of Maricopa)

Given under my hand and sealed this _____ day of _____, 20____.

District Clerk

EXHIBIT A

Amended Assessment Diagram

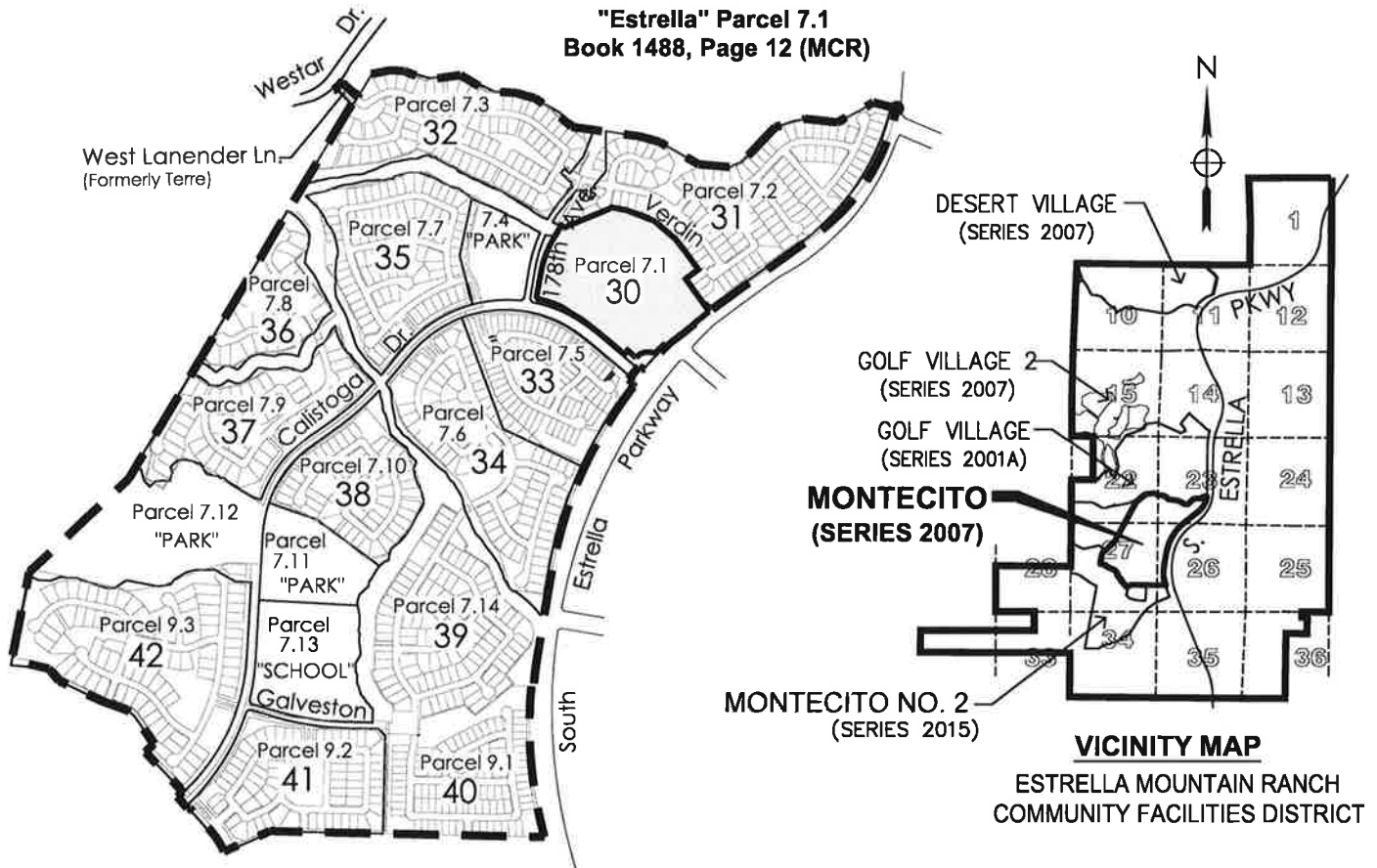
(see attached)

AMENDED ASSESSMENT DIAGRAM

For
Estrella Mountain Ranch Community Facilities District
(City of Goodyear, Arizona)

MONTECITO ASSESSMENT DISTRICT

ASSESSMENT NUMBER 030 (PARCEL 7.1)



DESCRIPTION

A PORTION OF SECTIONS 22, 23, 26 AND 27, TOWNSHIP 1 NORTH, RANGE 3 WEST OF THE GILA AND SALT RIVER BASE AND MERIDIAN, MARICOPA COUNTY, ARIZONA.

LEGEND

--- MONTECITO DISTRICT BOUNDARY
39 ASSESSMENT NUMBER

DISTRICT ENGINEER CERTIFICATION

I HEREBY CERTIFY THAT THE PARCEL BOUNDARIES SHOWN AND DEPICTED ON THIS PLAN ARE CORRECT TO THE BEST OF MY KNOWLEDGE AND BELIEF.

ENGINEER

DATE

APPROVED BY RESOLUTION NO. _____ AT A MEETING OF THE BOARD OF DIRECTORS OF THE ESTRELLA MOUNTAIN RANCH COMMUNITY FACILITIES DISTRICT, GOODYEAR, ARIZONA ON THE _____ DAY OF _____ 2019.

DISTRICT CLERK

DATE

SIGNED: THIS _____ DAY OF _____, 2019

SUBMITTED: _____
SUPERINTENDENT OF STREETS DATE

ASSESSMENT NO.	PARCEL	LOTS	ACREAGE
030-01-001 thru 080	7.1	80	16.49
031-01-001 thru 126	7.2	126	39.91
032-01-001 thru 086	7.3	86	27.84
033-02-001 thru 065	7.5	65	17.93
034-01-001 thru 083	7.6	83	30.28
035-01-001 thru 091	7.7	91	27.75
036-01-001 thru 027	7.8	27	12.13
037-01-001 thru 045	7.9	45	23.28
038-01-001 thru 054	7.10	54	17.44
039-01-001 thru 092	7.14	92	27.74
040-01-001 thru 092	9.1	92	22.92
041-01-001 thru 067	9.2	67	25.06
042-01-001 thru 084	9.3	84	41.32

NOTE: Lot Layout Shown on following Sheet (s)

WILLDAN
Engineering