

CITY OF GOODYEAR LANDSCAPE NOTES

- A. ALL GENERAL CONSTRUCTION NOTES SHALL APPLY.
- B. ALL SIGNS, MONUMENT WALLS AND SITE LIGHTING REQUIRE SEPARATE BUILDING APPROVAL.
- C. ALL FIRE HYDRANTS SHALL REQUIRE A 7-FOOT CLEARANCE IN ALL DIRECTIONS TO ANY NEW OR EXISTING LANDSCAPE.
- D. SUBSTITUTIONS IN TYPE, AND/OR DEVIATIONS IN SIZE OR QUANTITY FROM THE APPROVED LANDSCAPE OR IRRIGATION PLANS SHALL NOT BE PERMITTED WITHOUT PRIOR WRITTEN APPROVAL FROM THE CITY OF GOODYEAR. (CONTACT THE CITY LANDSCAPE TECHNICIAN REGARDING ALL PLANTING AND IRRIGATION SUBSTITUTIONS AT 623-882-7979.)
- E. ALL PLANT MATERIAL LOCATED IN THE PUBLIC RIGHTS-OF-WAY OR CITY OF GOODYEAR MAINTAINED AREAS SHALL BE IN COMPLIANCE WITH THE DEPARTMENT OF WATER RESOURCES LOW WATER USE PLANT LIST FOR THE PHOENIX ACTIVE MANAGEMENT AREA.
- F. ALL PLANT MATERIAL AND SPECIFICATIONS SHALL CONFORM TO THE ARIZONA NURSERYMAN ASSOCIATION CURRENT STANDARDS.
- G. THE CONTRACTOR IS TO ENSURE A ONE-FOOT CLEARANCE BETWEEN THE SIDEWALK AND MATURE TREE CANOPY.
- H. PLANT LEGEND PROVIDED FOR CONTRACTOR'S CONVENIENCE. CONSTRUCTION PLANS TAKE PRECEDENCE.
- I. A 10-FOOT CLEARANCE SHALL BE MAINTAINED BETWEEN A TREE TRUNK AND A UTILITY LINE.
- J. ALL EXISTING LANDSCAPE AND IRRIGATION SYSTEMS THAT ARE DESIGNATED TO REMAIN ON THE APPROVED LANDSCAPE PLANS SHALL NOT BE DAMAGED OR DESTROYED DURING CONSTRUCTION. ANY DAMAGE THAT DOES OCCUR DURING CONSTRUCTION SHALL BE REPLACED IN KIND BY THE CONTRACTOR.
- K. SIDEWALK AND PAVING CONSTRUCTION THAT ARE PART OF THE LANDSCAPE IMPROVEMENTS SHALL BE IN COMPLIANCE WITH ALL ON-SITE PAVING AND SHALL MEET DESIGN AND CONSTRUCTION REQUIREMENTS OF THE AMERICANS WITH DISABILITIES ACT (ADA).
- L. PRIOR TO ACCEPTANCE OF ANY BACKFLOW DEVICE, EACH DEVICE SHALL BE TESTED BY A STATE CERTIFIED TESTER AND THE RESULTS PROVIDED TO THE CITY.
- M. UTILITY BOXES, METERS AND VAULTS SHALL BE LOCATED IN THE ROW AND WILL NOT BE PERMITTED IN ANY STREET MEDIAN.
- N. "AS-BUILT" DRAWINGS, CERTIFIED BY THE DEVELOPER'S LANDSCAPE ARCHITECT, SHALL BE SUBMITTED AND APPROVED PRIOR TO ISSUANCE OF A BUILDING "CERTIFICATE OF OCCUPANCY."
- O. LANDSCAPED AREAS THAT WILL BE MAINTAINED BY CITY PARKS DEPARTMENT SHALL BE CLEARLY IDENTIFIED ON THESE PLANS AND ARE SUBJECT TO THE FOLLOWING REQUIREMENTS.

1. THE DEVELOPER SHALL MAINTAIN AND WARRANTY ALL PLANTED AREAS INCLUDING IRRIGATION SYSTEMS FOR A PERIOD OF TWO YEARS BEGINNING IMMEDIATELY AFTER THE CITY ISSUES THE NOTIFICATION OF APPROVAL FOR THE PROJECT.
2. DURING THE MAINTENANCE AND WARRANTY PERIOD, THE DEVELOPER SHALL BE RESPONSIBLE FOR MAINTAINING ADEQUATE PROTECTION TO ALL AREAS. ANY DAMAGED PLANTINGS AND OR IRRIGATION SYSTEMS SHALL BE IMMEDIATELY REPAIRED OR REPLACED AT THE DEVELOPER'S EXPENSE.
3. MAINTENANCE SHALL INCLUDE CONTINUOUS OPERATIONS OF WATERING, WEEDING, REMOVAL OF DEAD PLANT MATERIAL, MOWING, ROLLING, FERTILIZING, SPRAYING, INSECT AND PEST CONTROL, RE-SEEDING, REPLACEMENT, AND ALL OTHER MEASURES NECESSARY TO ENSURE GOOD NORMAL GROWTH.
4. WHEN THE TURF HAS ESTABLISHED SUFFICIENT ROOT STRUCTURE AND AN APPROXIMATE HEIGHT OF 3 INCHES, MOWING SHALL BEGIN IMMEDIATELY AND REDUCE IN SAFE INCREMENTS TO A HEIGHT OF 2 INCHES AND SHALL BE MAINTAINED THEREAFTER AT THE HEIGHT OF 2 INCHES.
5. AT THE TERMINATION OF THE MAINTENANCE AND WARRANTY PERIOD, ALL TURF AREAS SHALL BE LIVE, HEALTHY, UNDAMAGED, AND FREE OF INFESTATIONS. ALL AREAS SHALL BE COMPLETELY VOID OF BARREN SPOTS LARGER THAN 3 INCHES BY 3 INCHES.
6. IF ALL PLANTINGS ARE NOT ACCEPTABLE AT THE END OF THE TWO YEAR PERIOD, THE MAINTENANCE AND WARRANTY PERIOD SHALL CONTINUE UNTIL ALL UNACCEPTABLE PLANTINGS ARE REPLACED OR REPAIRED AND THE LANDSCAPING MEETS CITY APPROVAL.
7. AREAS MAY INCLUDE RETENTION BASINS, PARKS, RIGHTS-OF-WAY, AND STREET CENTER MEDIAN LANDSCAPING.

SITE LANDSCAPE NOTES

1. SHRUBS AND GROUND COVER PLANTED WITHIN THE SIGHT VISIBILITY TRIANGLES SHALL HAVE A MATURE HEIGHT OF NOT MORE THAN 24 INCHES. HEIGHT SHALL BE MEASURED FROM THE EDGE OF PAVEMENT, AND TOTAL HEIGHT OF ANY MOUNDING (EDS&PM 7.2.4.b.1).
2. TREES PLANTED WITHIN SIGHT VISIBILITY TRIANGLES SHALL HAVE A CLEAR TRUNK PRUNED TO A HEIGHT OF SEVEN FEET OR GREATER UPON INSTALLATION. HEIGHT SHALL BE MEASURED FROM THE EDGE OF PAVEMENT (EDS&PM 7.2.4.b.2).
3. SEVEN-FOOT MINIMUM CLEARANCE SHALL BE MAINTAINED ABOVE THE FIRE HYDRANT FROM LANDSCAPE MATERIAL WITH A MATURE HEIGHT EXCEEDING 6 : PER CITY STANDARD DETAILS (EDS&PM 5.1.6b.3.c.).

LANDSCAPE ARCHITECT

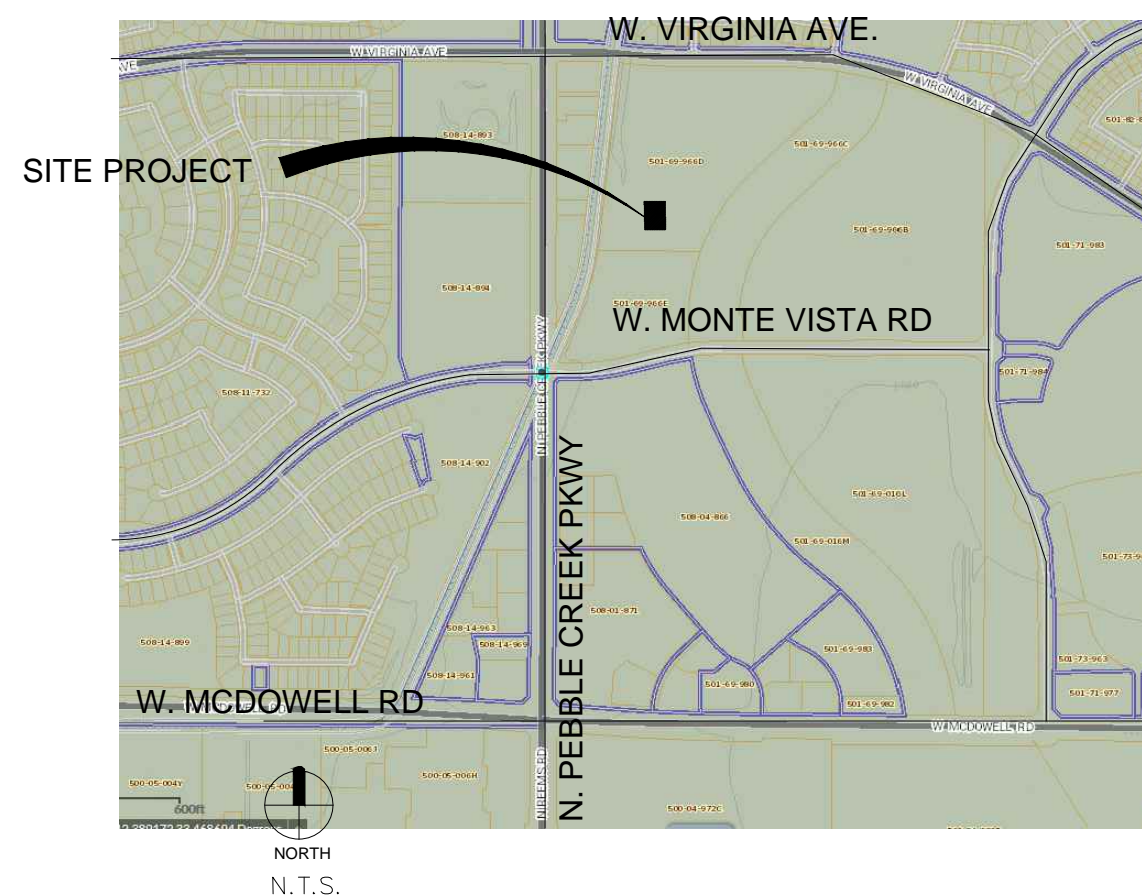
THE MONOLITH GROUP
KEVIN PROCIW
15849 N 71st STREET
SUITE 235
SCOTTSDALE, AZ 85254
(480) 719-3000
KEVIN@ZZONECO.COM

HARRINGTON PLANNING + DESIGN (HP+D)
1921 S. ALMA SCHOOL RD.
MESA, AZ 85210
JASON HARRINGTON, RLA, ASLA, ASIC, APWA
(480) 250-0116
JASON@HARRINGTONPLANNINGDESIGN.COM


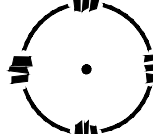
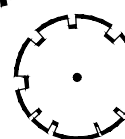
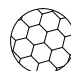

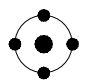

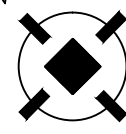


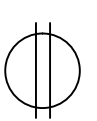


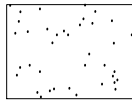
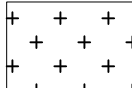
SITE ADDRESS

15361 W. VIRGINIA AVE.
GOODYEAR, AZ 85395

VICINITY MAP



PLANTING MATERIAL LEGEND

	TREES	SIZE	NOTES	QTY
	Parkinsonia x 'Desert Museum' Desert Museum Palo Brea Caliper Size: 1.5"	24" Box low break	*ADWR	91
	Pistacia chinensis Chinese Pistache Caliper Size: 3.0"	48" Box	*ADWR	58
	Acacia aneura Mulga Caliper Size: 2.0"	36" Box	*ADWR	18
GROUNDCOVERS				QTY
	Lantana montevidensis Trailing Lantana	5 Gallon can full	*ADWR	158
	Gazania rigens Trailing Gazania	5 Gallon can full	*ADWR	246
	Convolvulus cneorum Bush Morning Glory	5 Gallon can full	*ADWR	116
SHRUBS / ACCENTS				QTY
	Hesperaloe parviflora Red Yucca	5 Gallon can full	*ADWR	206
	Bougainvillea gl. v. 'La Jolla' La Jolla Bougainvillea	5 Gallon can full	*ADWR	44
	Leucophyllum laevgatum Chihuahuan Sage	5 Gallon can full	*ADWR	192
	Ruellia pennisularis Baja Ruellia	5 Gallon can full	*ADWR	308
	Muhlenbergia rigens Deer Grass	5 Gallon can full	*ADWR	417
	Tecoma stans Arizona Yellow Bells	5 Gallon can full	*ADWR	73
	Calliandra x 'Sierra Star' Sierra Star Red Fairy Duster	5 Gallon can full	*ADWR	45
LANDSCAPE MATERIALS				
	Decomposed Granite. 3/4" screened "Express Gold" 2" deep in planting areas per plan.			92,4
	Decomposed Granite. 3/4" screened "Express Gold" 1" deep in dust control areas			173,

*ADWR = Arizona Department of Water Resources
Approved Low-Water Use Plant

GOODYEAR STORAGE FACILITY

15361 W. VIRGINIA AVE.
GOODYEAR, ARIZONA 85395

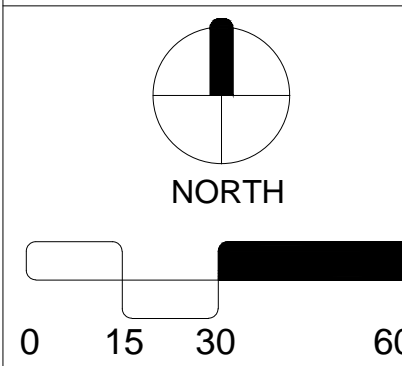
[illegible]

2nd Review	04.09.19
1ST Review	02.05.19
ISSUE	DATE

LANDSCAPE
PACKAGE

April 9, 2019

DRAWN BY:	JEH
CHECK BY:	JEH
PROJ. NO.:	2019-003
CASE NO.:	NA

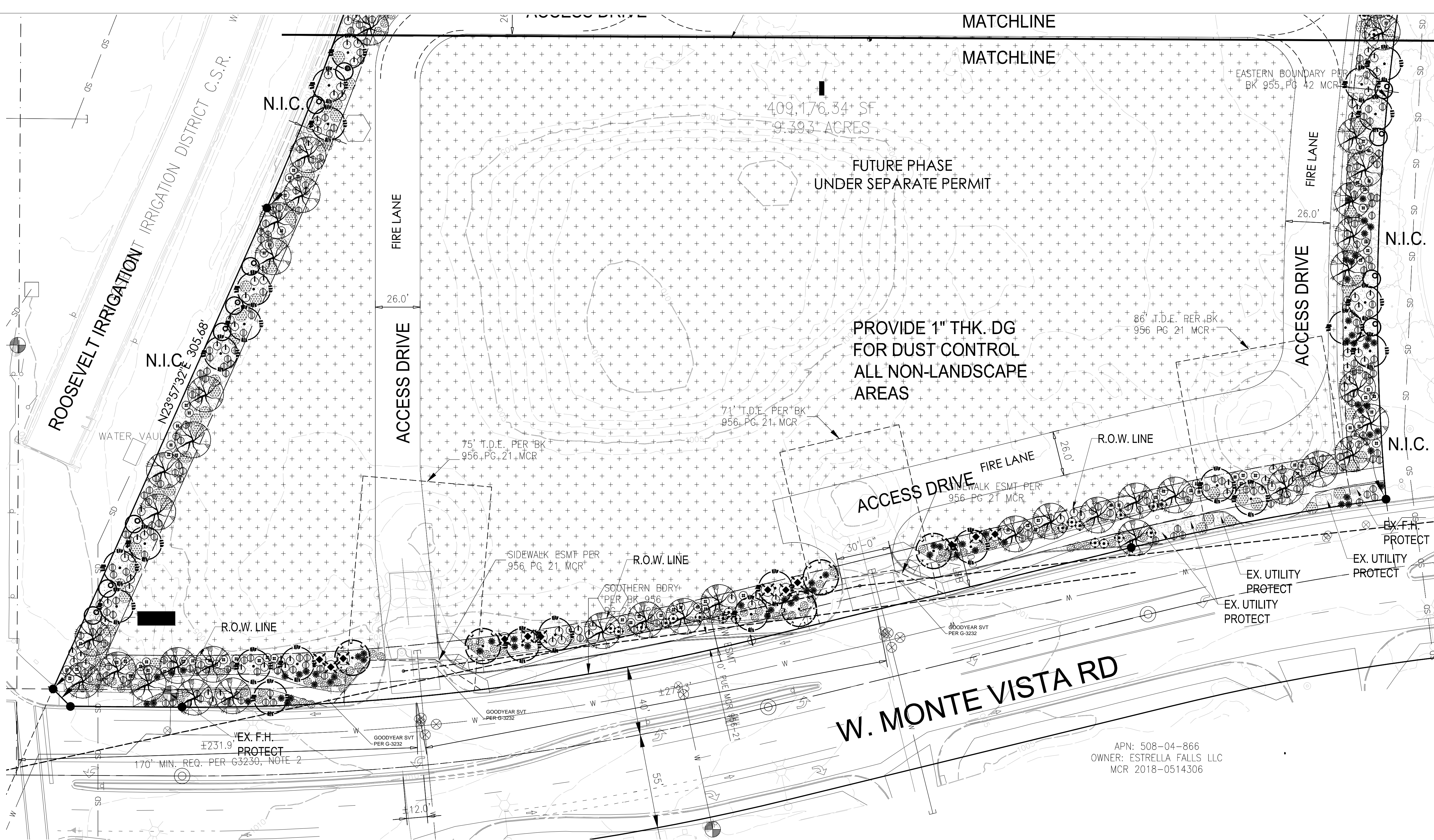


PRELIMINARY LANDSCAPE PLAN

L1.1

1 of 2

**ARIZONA BLUESTAKE
CENTER**
CALL TWO WORKING DAYS
BEFORE YOU DIG
1.800.782.5348



PLANTING MATERIAL LEGEND

TREES	SIZE	NOTES	QTY
Parkinsonia x 'Desert Museum'	24" Box		91
Desert Museum Palo Brea	low break	*ADWR	
Caliper Size: 1.5"			
Pistacia chinensis	48" Box		58
Chinese Pistache		*ADWR	
Caliper Size: 3.0"			
Acacia aneura	36" Box		18
Mulga		*ADWR	
Caliper Size: 2.0"			
GROUNDCOVERS			QTY
Lantana montevidensis	5 Gallon		158
Trailing Lantana	can full	*ADWR	
Gazania rigens	5 Gallon		246
Trailing Gazania	can full	*ADWR	
Convolvulus cneorum	5 Gallon		116
Bush Morning Glory	can full	*ADWR	

SHRUBS / ACCENTS		QTY
Hesperaloe parviflora	5 Gallon	206
Red Yucca	can full	*ADWR
Bougainvillea gl. v. 'La Jolla'	5 Gallon	44
La Jolla Bougainvillea	can full	*ADWR
Leucophyllum laevigatum	5 Gallon	192
Chihuahuan Sage	can full	*ADWR
Ruellia pennsularis	5 Gallon	308
Baja Ruellia	can full	*ADWR
Muhlenbergia rigens	5 Gallon	417
Deer Grass	can full	*ADWR
Tecoma stans	5 Gallon	73
Arizona Yellow Bells	can full	*ADWR
Calliandra x 'Sierra Star'	5 Gallon	45
Sierra Star Red Fairy Duster	can full	*ADWR

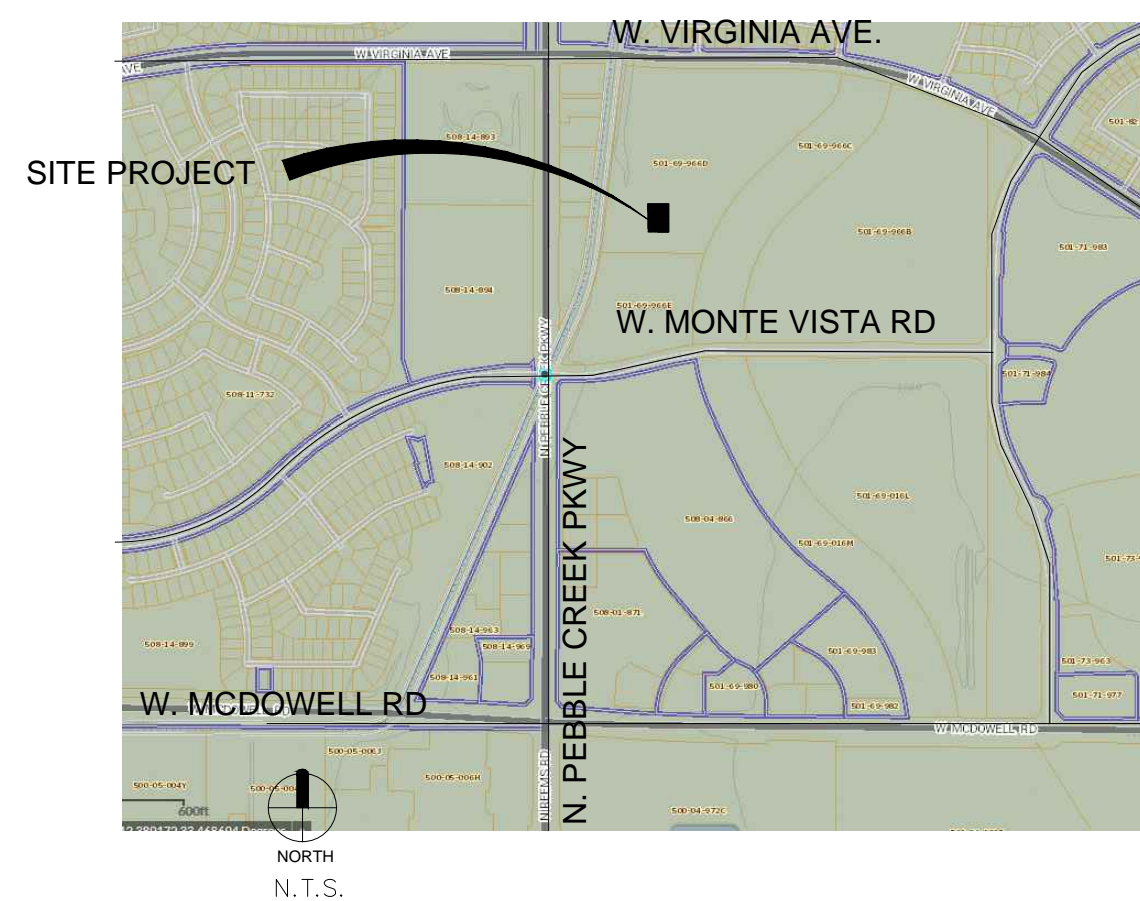
LANDSCAPE MATERIALS	
Decomposed Granite, 3/4" screened "Express Gold"	92,440 s.f.
2" deep in planting areas per plan.	
Decomposed Granite, 3/4" screened "Express Gold"	173,340 s.f.
1" deep in dust control areas	

*ADWR = Arizona Department of Water Resources
Approved Low-Water Use Plant

SITE LANDSCAPE NOTES

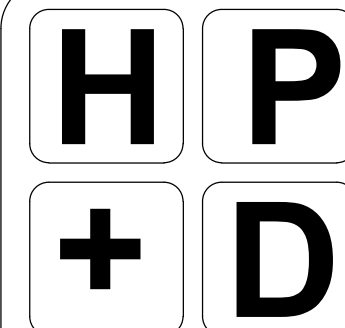
1. SHRUBS AND GROUNDCOVER PLANTED WITHIN THE SIGHT VISIBILITY TRIANGLES SHALL HAVE A MATURE HEIGHT OF NOT MORE THAN 24 INCHES, HEIGHT SHALL BE MEASURED FROM THE EDGE OF PAVEMENT, AND TOTAL HEIGHT OF ANY MOUNDING (EDS&PM 7.2.4.b.1).
2. TREES PLANTED WITHIN SIGHT VISIBILITY TRIANGLES SHALL HAVE A CLEAR TRUNK PRUNED TO A HEIGHT OF SEVEN FEET OR GREATER UPON INSTALLATION. HEIGHT SHALL BE MEASURED FROM THE EDGE OF PAVEMENT (EDS&PM 7.2.4.b.2).
3. SEVEN-FOOT MINIMUM CLEARANCE SHALL BE MAINTAINED AROUND THE FIRE HYDRANT FROM LANDSCAPE MATERIAL WITH A MATURE HEIGHT EXCEEDING 6' PER CITY STANDARD DETAILS (EDS&PM 5.1.6b.3.c).

VICINITY MAP



THIS PLAN SHEET DOES NOT HAVE ANY LANDSCAPE AREAS THAT WILL BE MAINTAINED BY THE CITY OF GOODYEAR.

ARIZONA BLUESTAKE CENTER
CALL TWO WORKING DAYS BEFORE YOU DIG
1.800.782.5348



HARRINGTON
PLANNING + DESIGN

3116 S. Mill Avenue, Suite 305
Tempe, Arizona 85282
Tel: 480-250-0116
www.HarringtonPlanningDesign.com

PRELIMINARY
NOT FOR CONSTRUCTION



GOODYEAR STORAGE
FACILITY

15361 W. VIRGINIA AVE
GOODYEAR, ARIZONA 85395

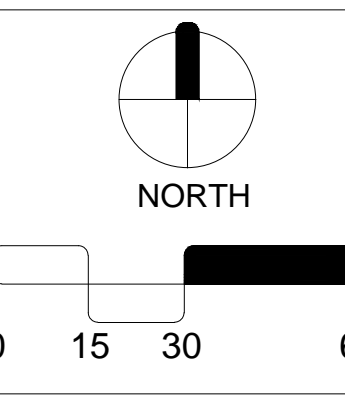
REV. COMMENT DATE

2nd Review 04.09.19
1ST Review 02.05.19
ISSUE DATE

LANDSCAPE
PACKAGE

April 9, 2019

DRAWN BY: JEH
CHECK BY: JEH
PROJ. NO.: 2019-003
CASE NO.: NA



PRELIMINARY
LANDSCAPE PLAN

L1.2

2 of 2