



# Goodyear Civic Square

## At Estrella Falls



- Project themes
  - Dedicated space designed for consolidated public services
  - Gathering place for public events – the heart of our community
  - Economic vitality through mixed-use development

# Public-Private Partnership



- The Globe Corporation
- Phase 1:
  - City Hall with Library
  - 2-acre park for civic activities & events
  - Class A speculative office building



PEBBLE CREEK PARKWAY

MONTE VISTA DRIVE

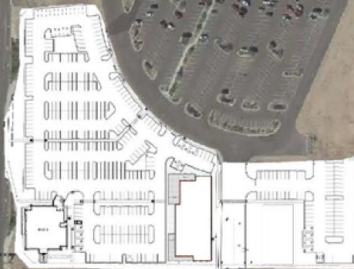
150TH DRIVE

BULLARD WASH PARK

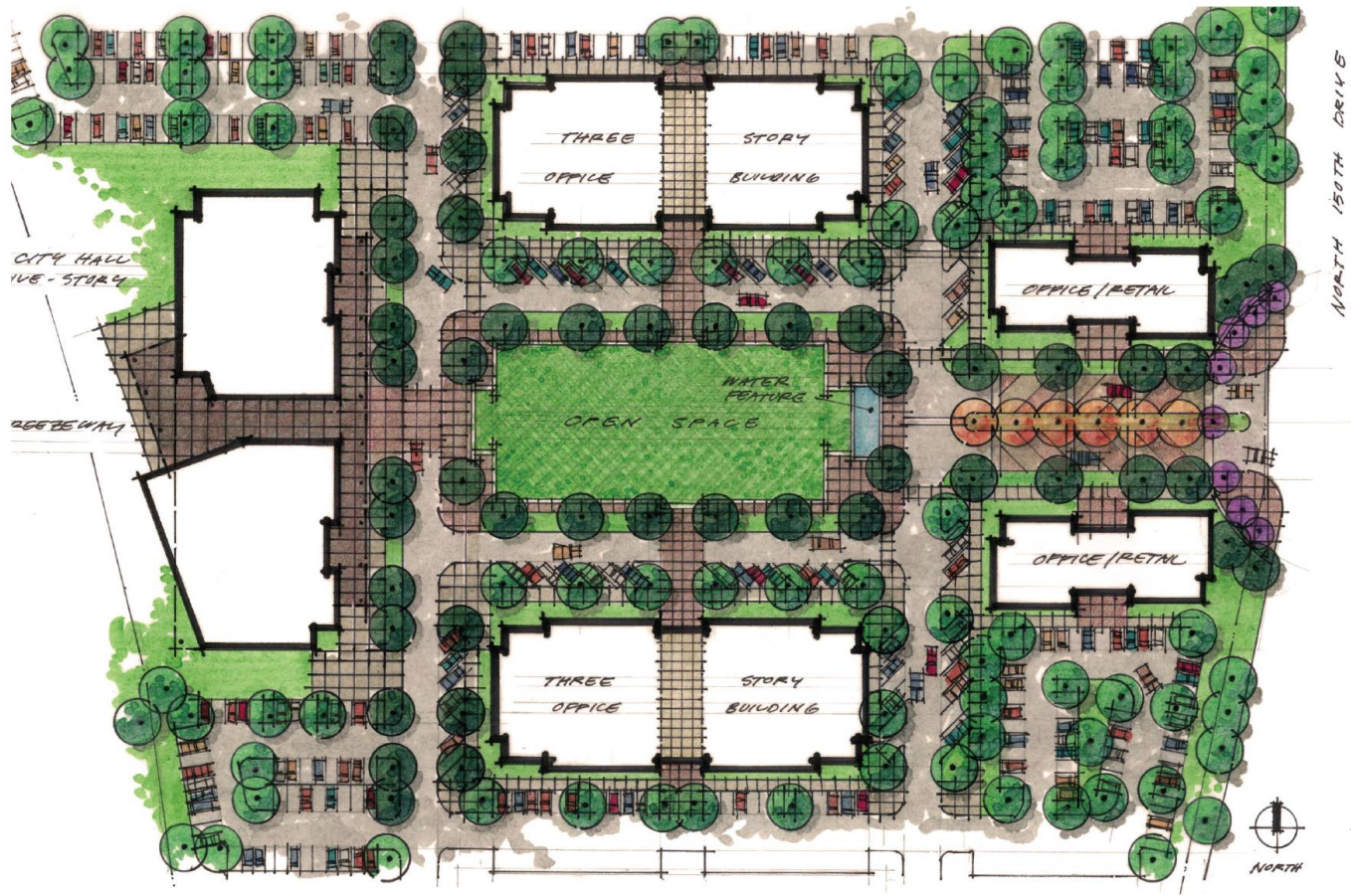
THE MARKET AT  
ESTRELLA FALLS

Harkins  
THEATRES

MCDOWELL ROAD









# Southlake Town Square

City of Southlake, Texas



# Letter of Intent



- First official step in partnership
- Signals intention of both parties to pursue the project

# Letter of Intent Highlights



- Globe to donate 6 to 7 acres of land to the City
- Goodyear Civic Square project to be funded by the City of Goodyear
- Globe will construct a 100,000 SF class A office building
  - concurrent with the Civic Square at their cost
- City will maintain Civic Square improvements
- Roads to be dedicated to the City as public streets



# Next Steps



- City to begin programming
- Negotiate the Development Agreement
- Pursue Planned Area Development

# GOODYEAR CIVIC SQUARE at Estrella Falls



## SUMMER 2022