

ASSESSMENT MODIFICATION DIAGRAM

For
Estrella Mountain Ranch Community Facilities District
(City of Goodyear, Arizona)

LUCERO ASSESSMENT DISTRICT NO. 1

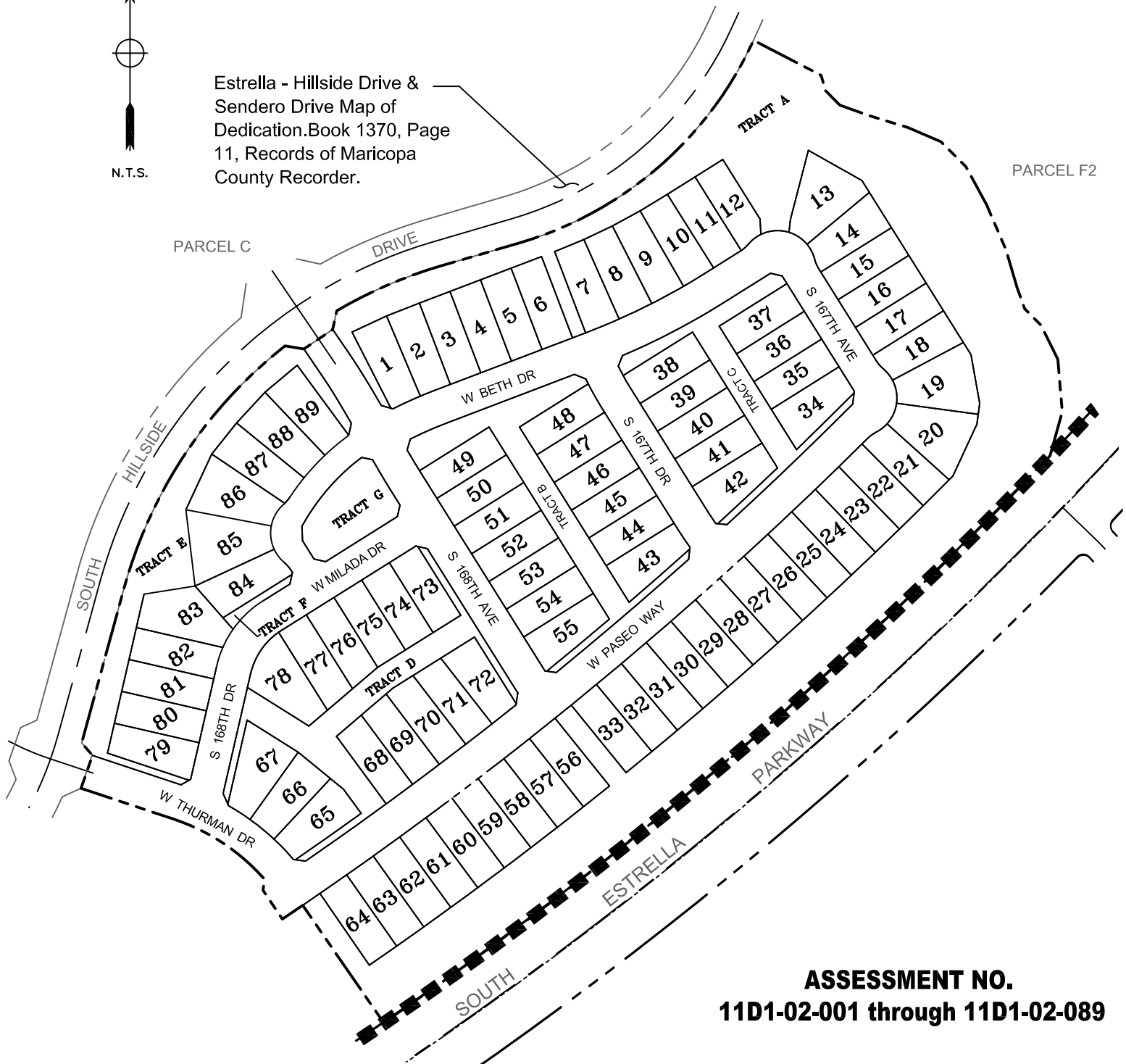
special assessment revenue bonds, Series 2018

PARCEL 11.D1

Book 1441, Page 36, Maricopa County Records



Estrella - Hillside Drive &
Sendero Drive Map of
Dedication. Book 1370, Page
11, Records of Maricopa
County Recorder.



ASSESSMENT NO.
11D1-02-001 through 11D1-02-089



ASSESSMENT MODIFICATION DIAGRAM
For
Estrella Mountain Ranch Community Facilities District
(City of Goodyear, Arizona)

LUCERO ASSESSMENT DISTRICT NO. 1

special assessment revenue bonds, Series 2018

PARCEL 11.D1

Book 1441, Page 36, Maricopa County Records

ASM'T NO.	LOT	ASSESSMENT
11D1-02-001	1	\$13,219
11D1-02-002	2	\$13,219
11D1-02-003	3	\$13,219
11D1-02-004	4	\$13,219
11D1-02-005	5	\$13,219
11D1-02-006	6	\$13,219
11D1-02-007	7	\$13,219
11D1-02-008	8	\$13,219
11D1-02-009	9	\$13,219
11D1-02-010	10	\$13,219
11D1-02-011	11	\$13,219
11D1-02-012	12	\$13,219
11D1-02-013	13	\$13,219
11D1-02-014	14	\$13,219
11D1-02-015	15	\$13,219
11D1-02-016	16	\$13,219
11D1-02-017	17	\$13,219
11D1-02-018	18	\$13,219
11D1-02-019	19	\$13,219
11D1-02-020	20	\$13,219
11D1-02-021	21	\$13,219
11D1-02-022	22	\$13,219
11D1-02-023	23	\$13,219
11D1-02-024	24	\$13,219
11D1-02-025	25	\$13,219
11D1-02-026	26	\$13,219
11D1-02-027	27	\$13,219
11D1-02-028	28	\$13,219
11D1-02-029	29	\$13,219
11D1-02-030	30	\$13,219
11D1-02-031	31	\$13,219
11D1-02-032	32	\$13,219
11D1-02-033	33	\$13,219
11D1-02-034	34	\$13,219
11D1-02-035	35	\$13,219
11D1-02-036	36	\$13,219
11D1-02-037	37	\$13,219
11D1-02-038	38	\$13,219
11D1-02-039	39	\$13,219
11D1-02-040	40	\$13,219
11D1-02-041	41	\$13,219
11D1-02-042	42	\$13,219
11D1-02-043	43	\$13,219
11D1-02-044	44	\$13,219
11D1-02-045	45	\$13,219
11D1-02-046	46	\$13,219
11D1-02-047	47	\$13,219
11D1-02-048	48	\$13,219
11D1-02-049	49	\$13,219
11D1-02-050	50	\$13,219
11D1-02-051	51	\$13,219
11D1-02-052	52	\$13,219

ASM'T NO.	LOT	ASSESSMENT
11D1-02-053	53	\$13,219
11D1-02-054	54	\$13,219
11D1-02-055	55	\$13,219
11D1-02-056	56	\$13,219
11D1-02-057	57	\$13,219
11D1-02-058	58	\$13,219
11D1-02-059	59	\$13,219
11D1-02-060	60	\$13,219
11D1-02-061	61	\$13,219
11D1-02-062	62	\$13,219
11D1-02-063	63	\$13,219
11D1-02-064	64	\$13,219
11D1-02-065	65	\$13,219
11D1-02-066	66	\$13,219
11D1-02-067	67	\$13,219
11D1-02-068	68	\$13,219
11D1-02-069	69	\$13,219
11D1-02-070	70	\$13,219
11D1-02-071	71	\$13,219
11D1-02-072	72	\$13,219
11D1-02-073	73	\$13,219
11D1-02-074	74	\$13,219
11D1-02-075	75	\$13,219
11D1-02-076	76	\$13,219
11D1-02-077	77	\$13,219
11D1-02-078	78	\$13,219
11D1-02-079	79	\$13,219
11D1-02-080	80	\$13,219
11D1-02-081	81	\$13,219
11D1-02-082	82	\$13,219
11D1-02-083	83	\$13,219
11D1-02-084	84	\$13,219
11D1-02-085	85	\$13,219
11D1-02-086	86	\$13,219
11D1-02-087	87	\$13,219
11D1-02-088	88	\$13,219
11D1-02-089	89	\$13,219

ASSESSMENT NO.
11D1-02-001 through 11D1-02-089

