



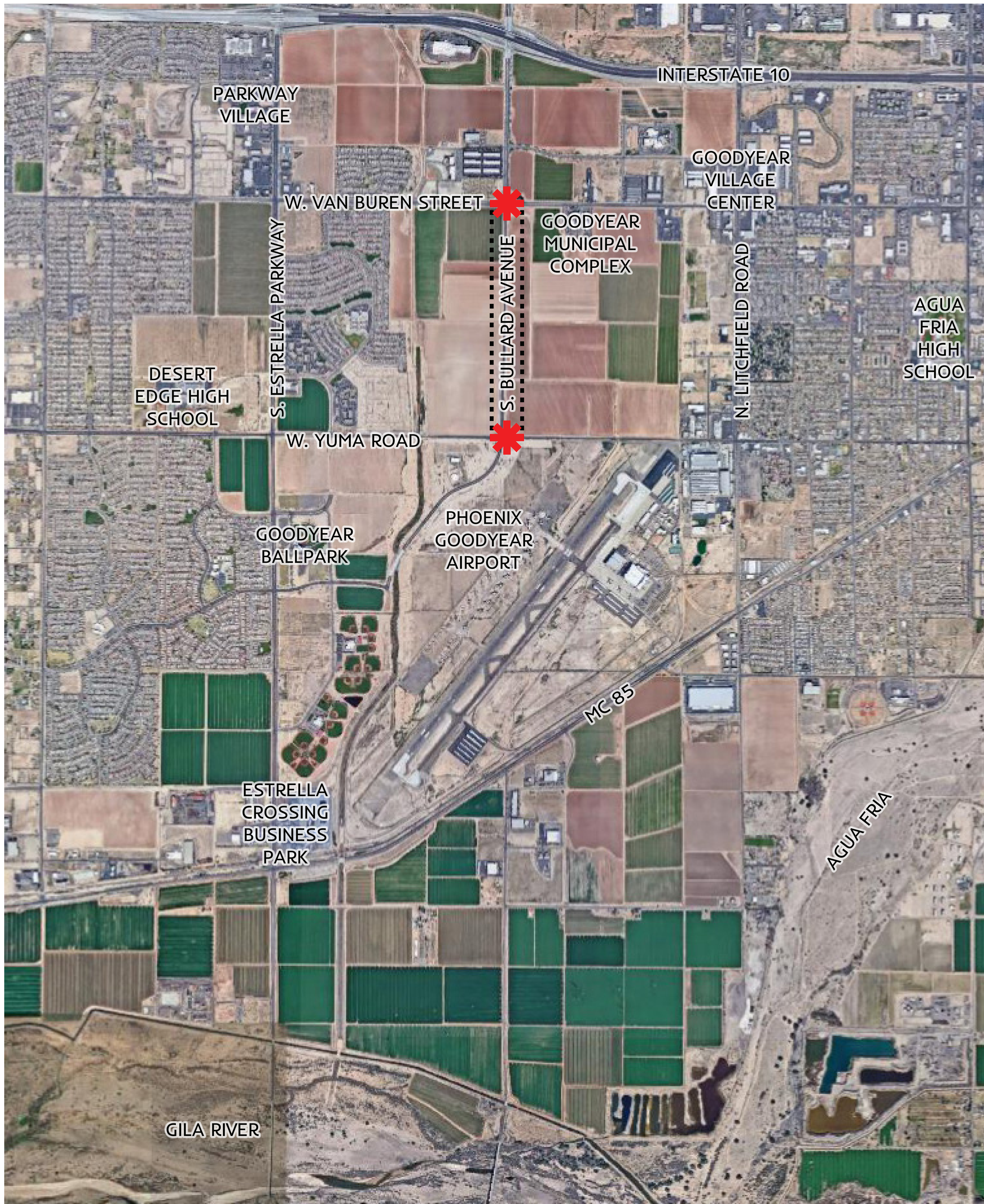
BULLARD AVENUE CORRIDOR

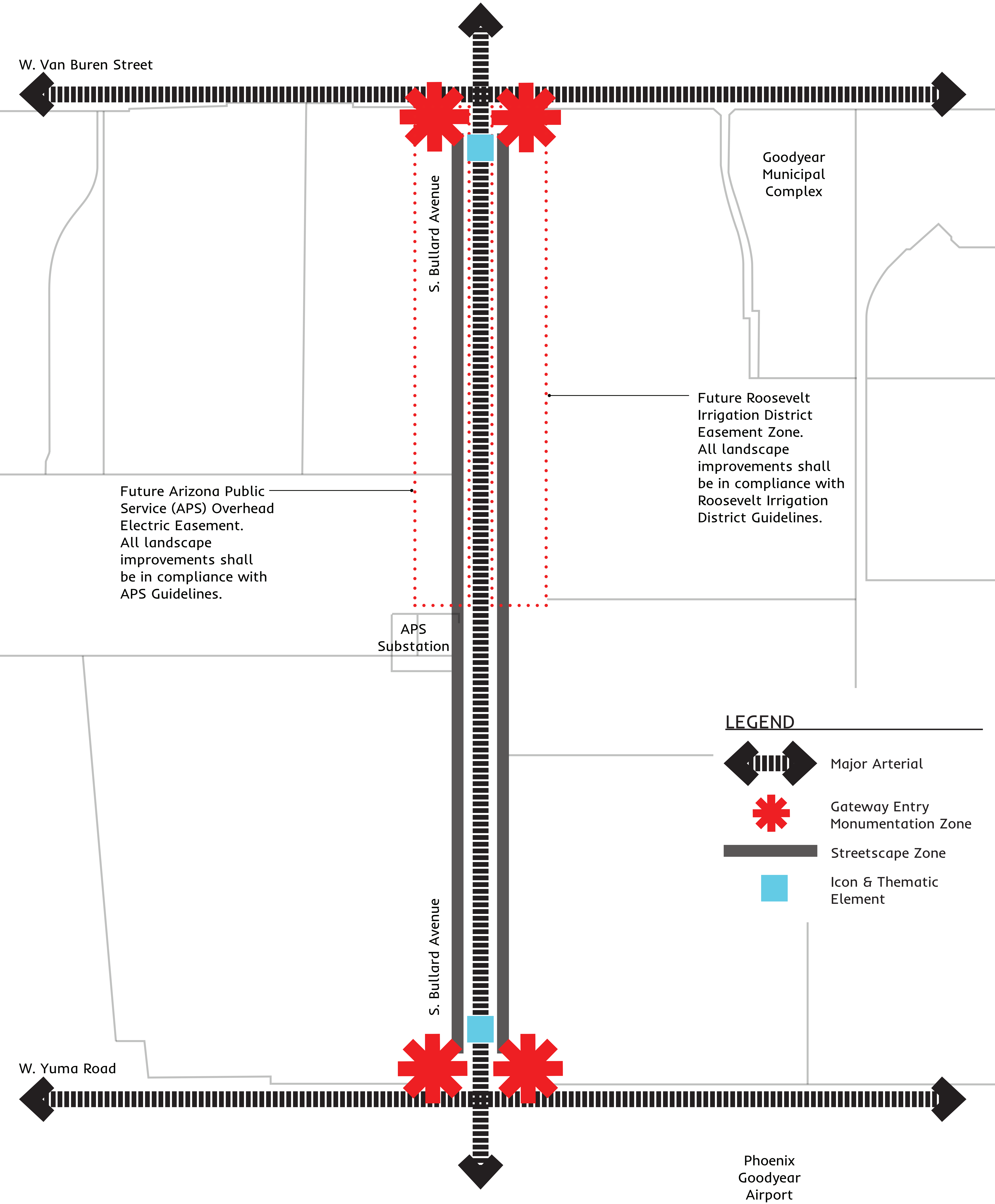
DESIGN TREATMENT STRATEGIES

NOVEMBER 2018

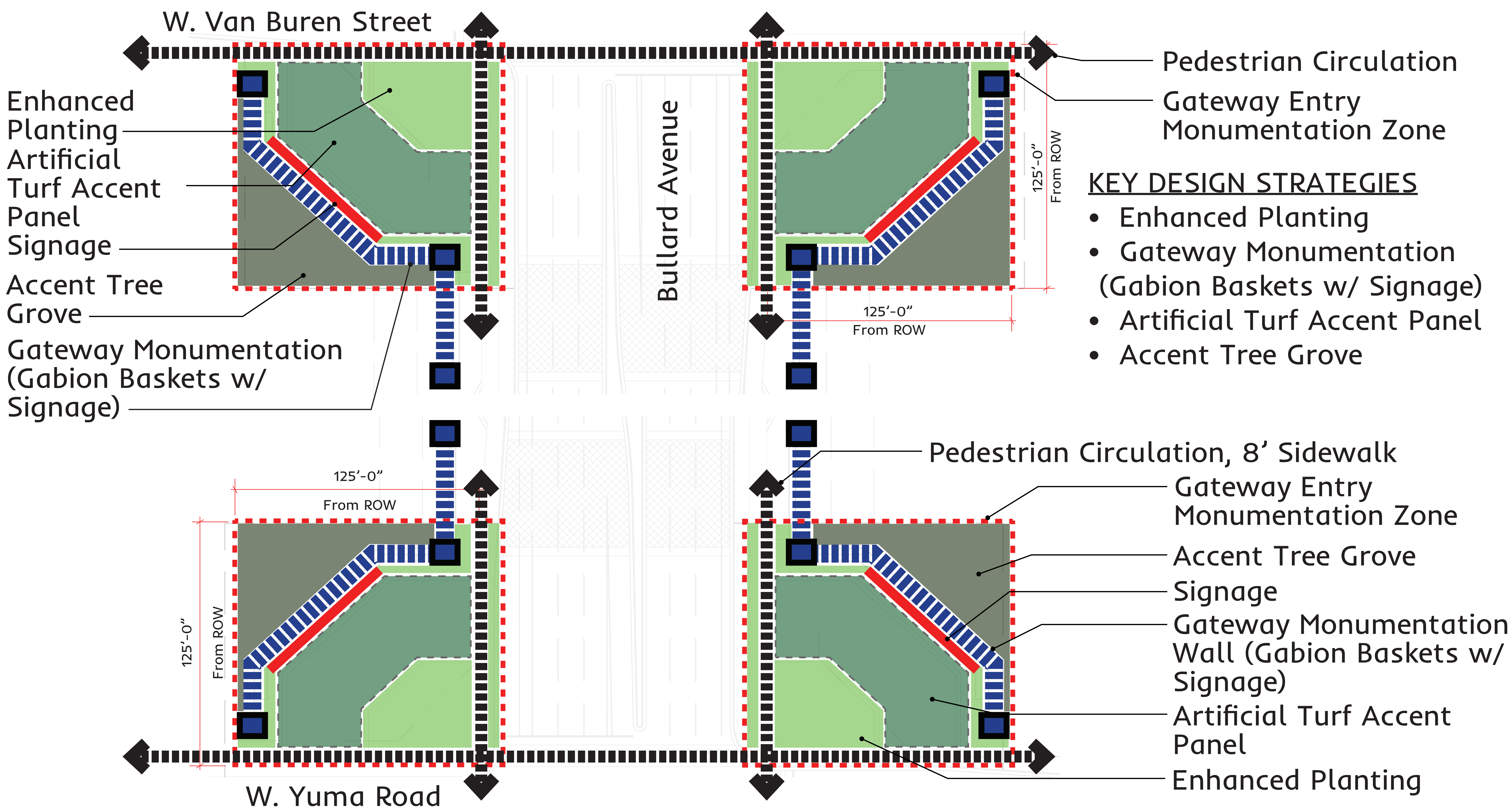


SWABACK_{pllc}
Architects + Planners

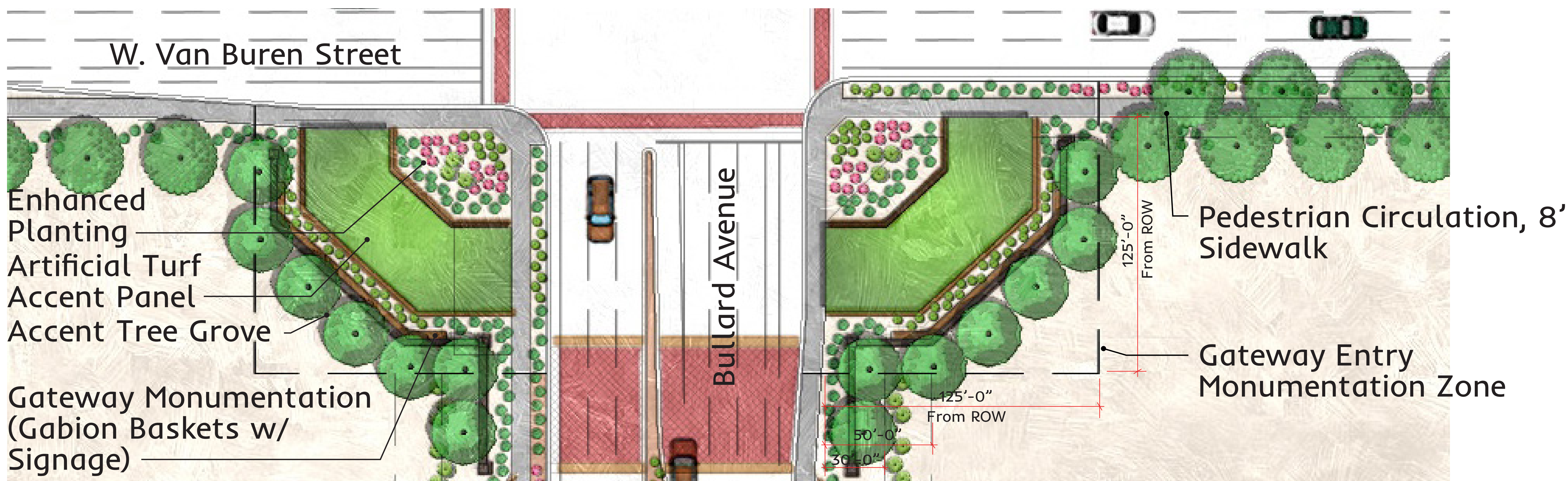




GATEWAY ENTRY MONUMENTATION ZONE

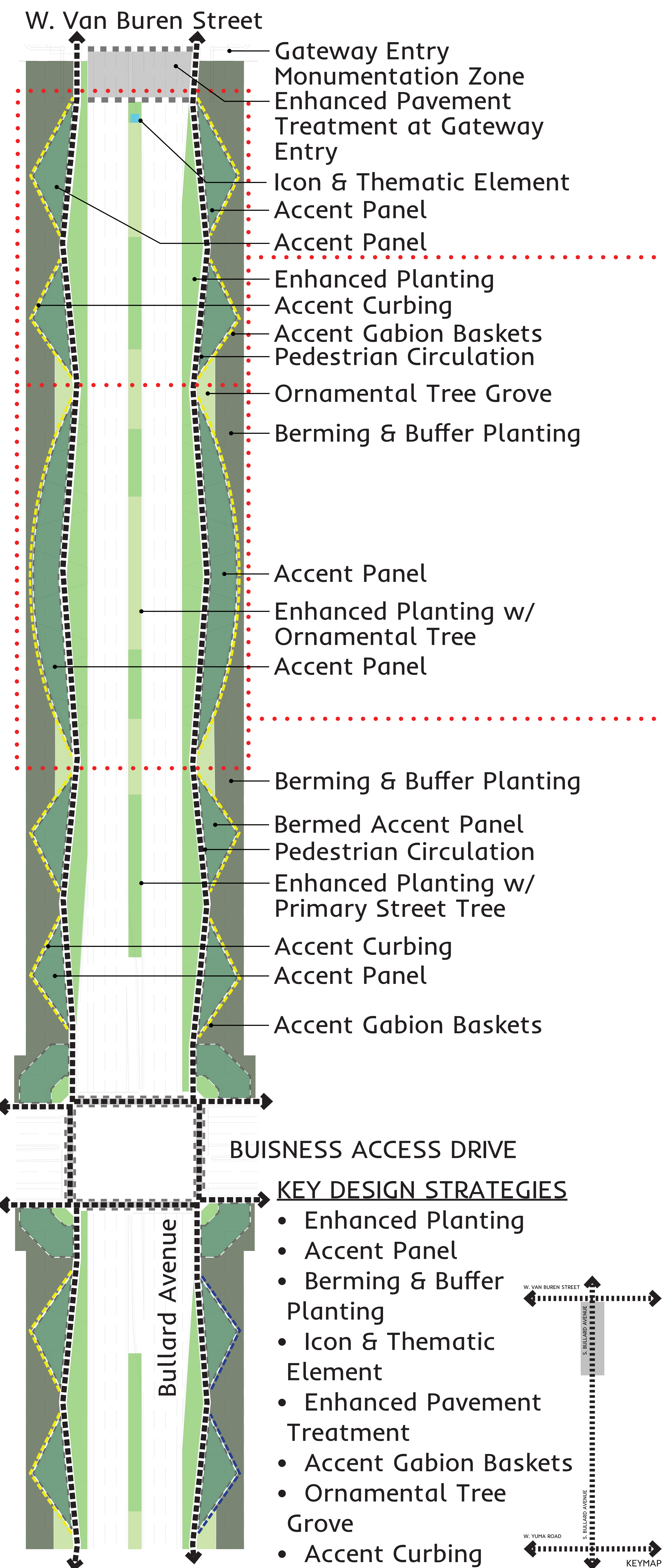


GATEWAY ENTRY MONUMENTATION ZONE - DESIGN FRAMEWORK

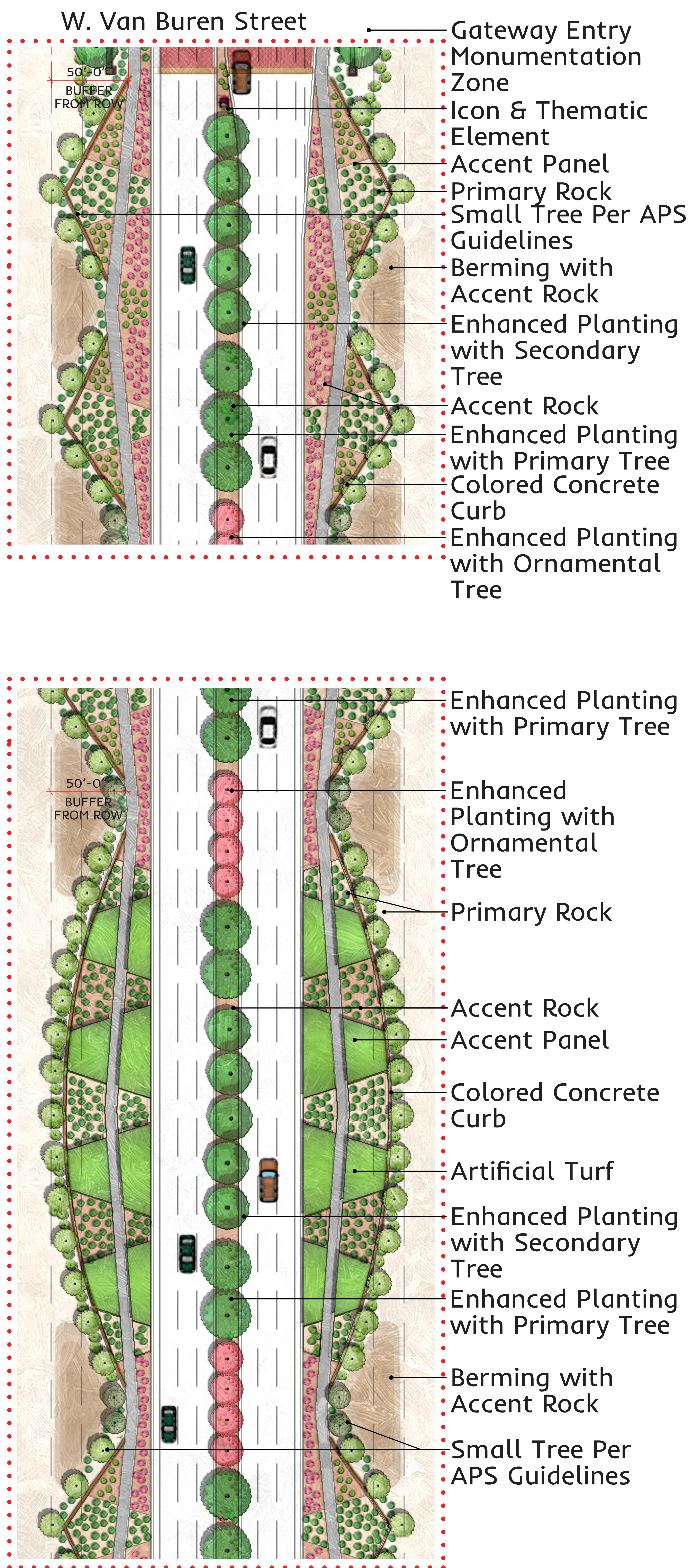


GATEWAY ENTRY MONUMENTATION ZONE - ILLUSTRATIVE PLAN

STREETSCAPE ZONE - W. Van Buren Street to 1/2 (APS & RID Easements)

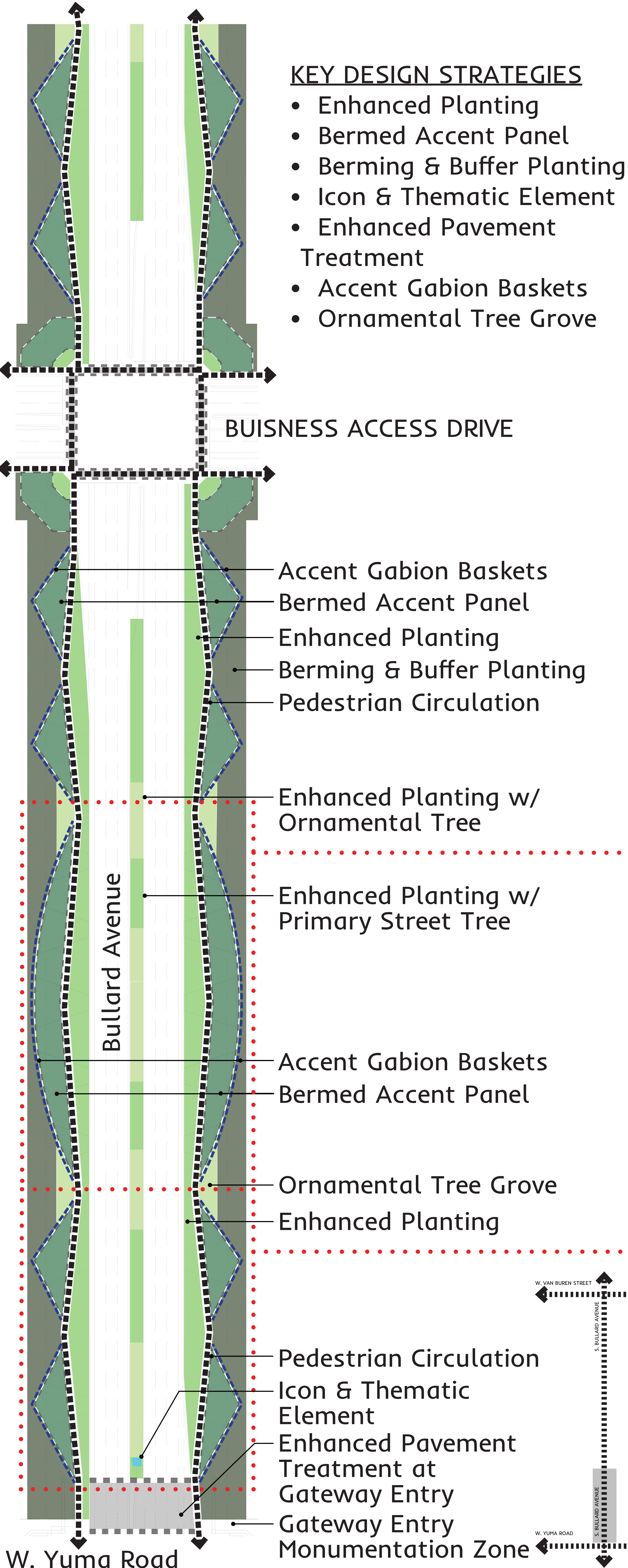


STREETSCAPE ZONE - W. Van Buren Street to 1/2 Mile - DESIGN FRAMEWORK

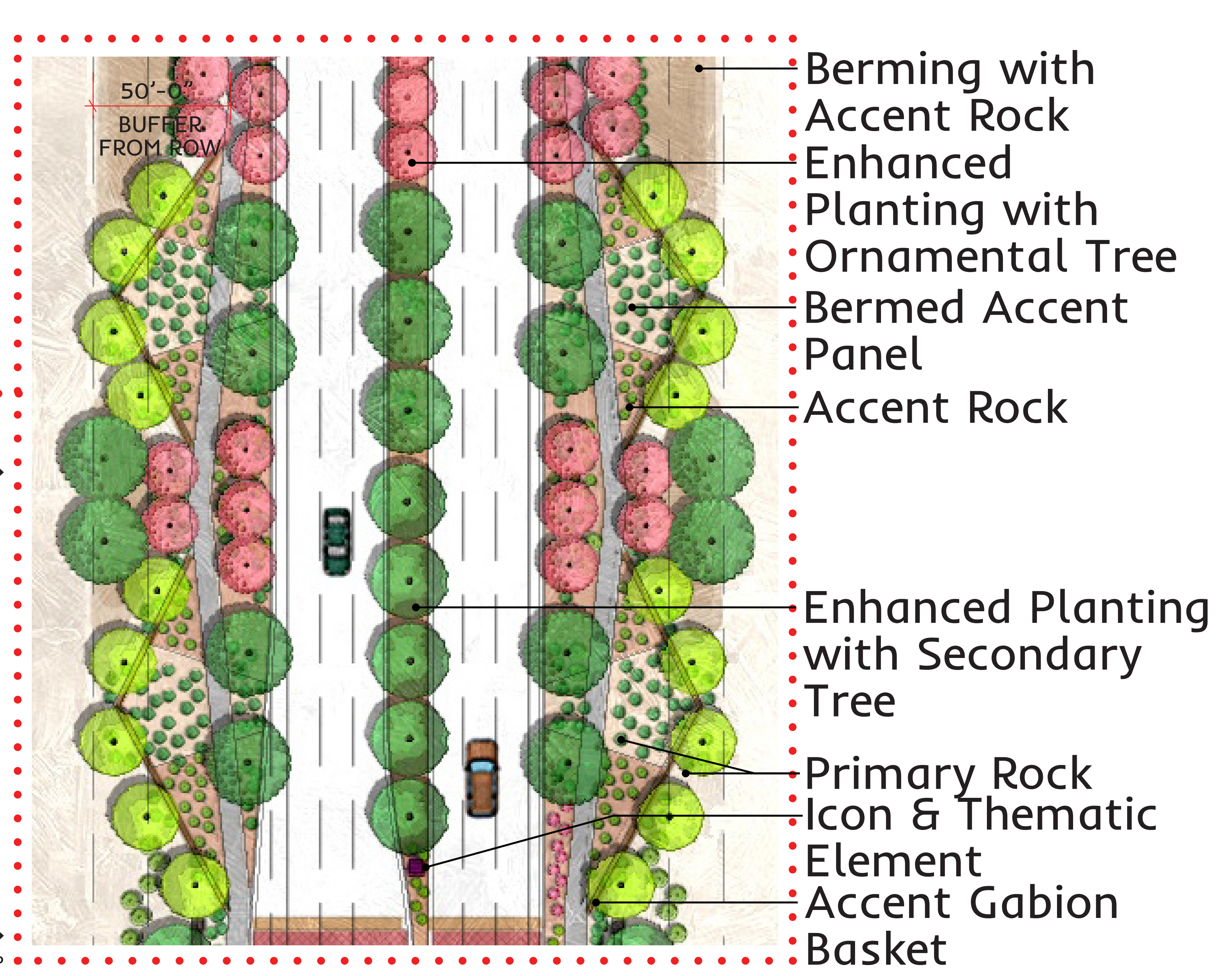
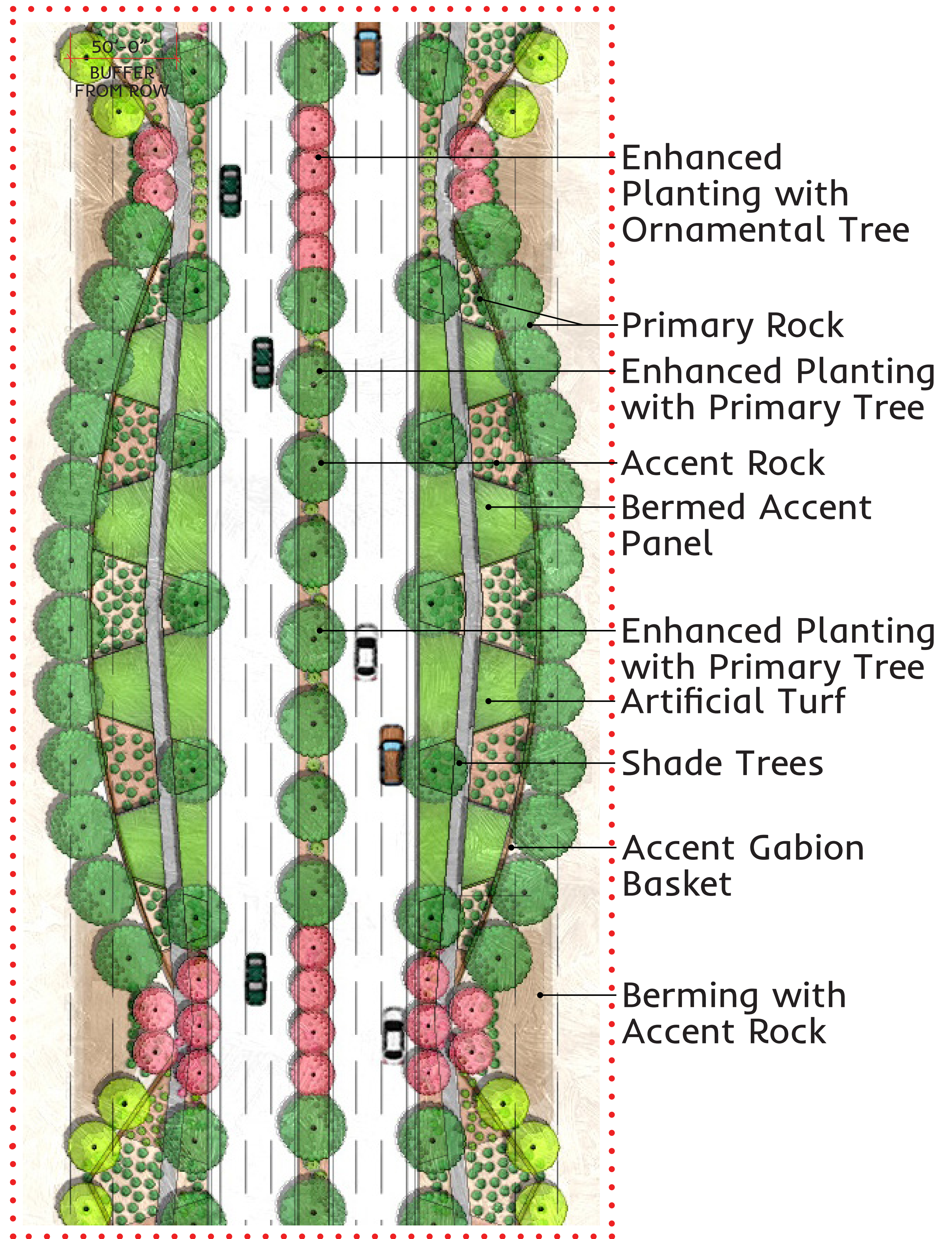


STREETSCAPE ZONE - W. Van Buren Street to 1/2 Mile - ILLUSTRATIVE PLAN ENLARGEMENTS

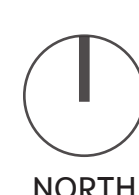
STREETSCAPE ZONE - W. Yuma Road to 1/2 Mile

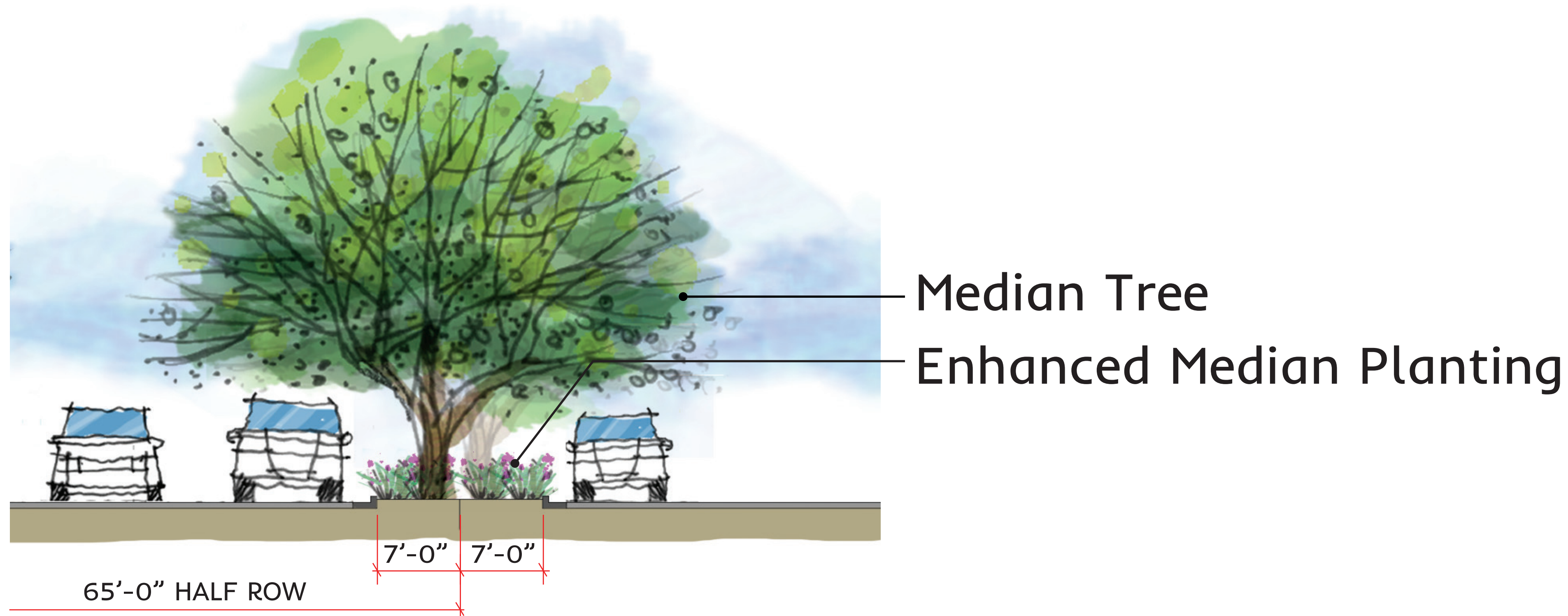
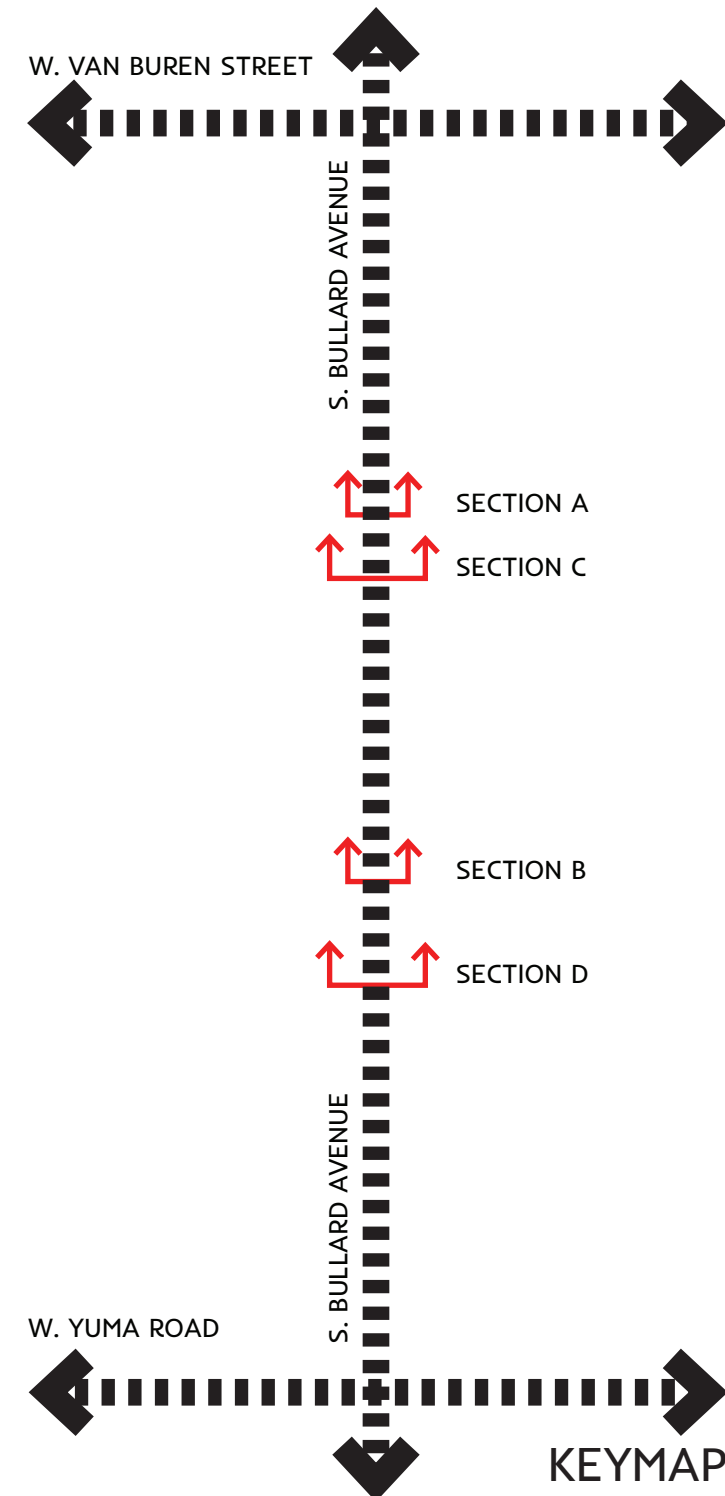


STREETSCAPE ZONE - W. Yuma Road to 1/2 Mile
DESIGN FRAMEWORK

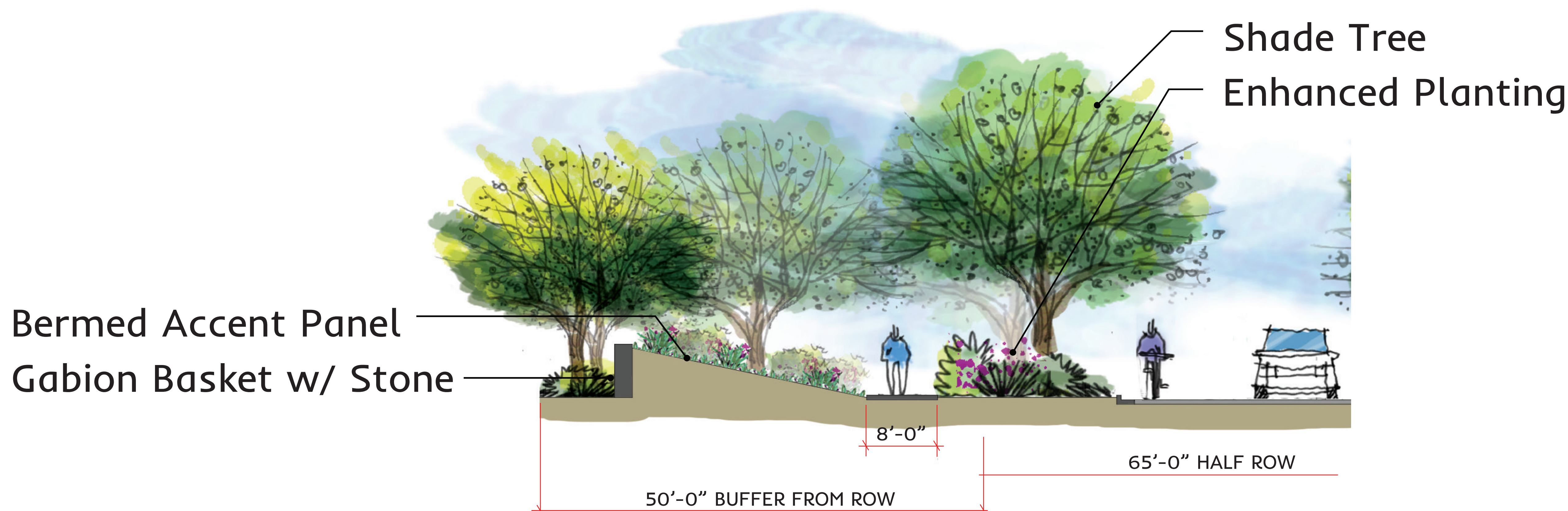


STREETSCAPE ZONE - W. Yuma Road to 1/2 Mile
ILLUSTRATIVE PLAN ENLARGEMENTS

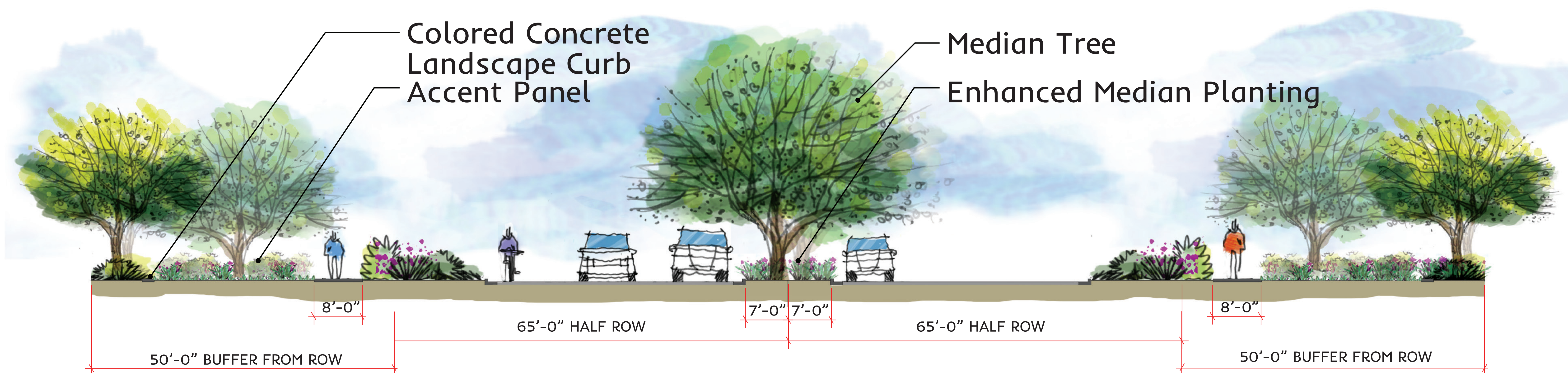




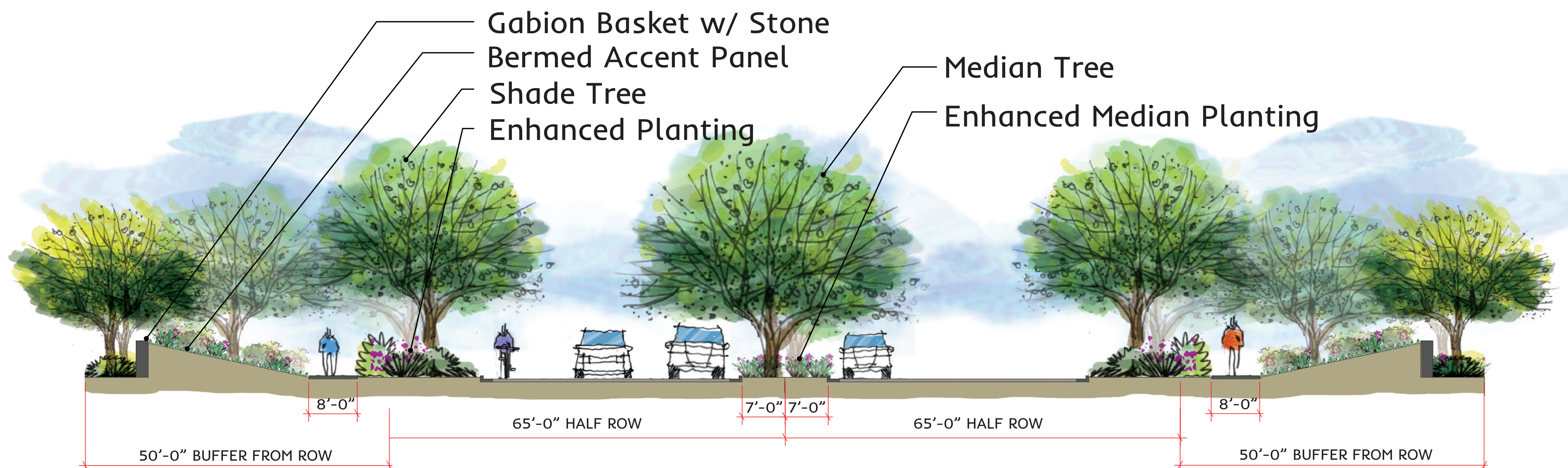
ILLUSTRATIVE SECTION A - MEDIAN



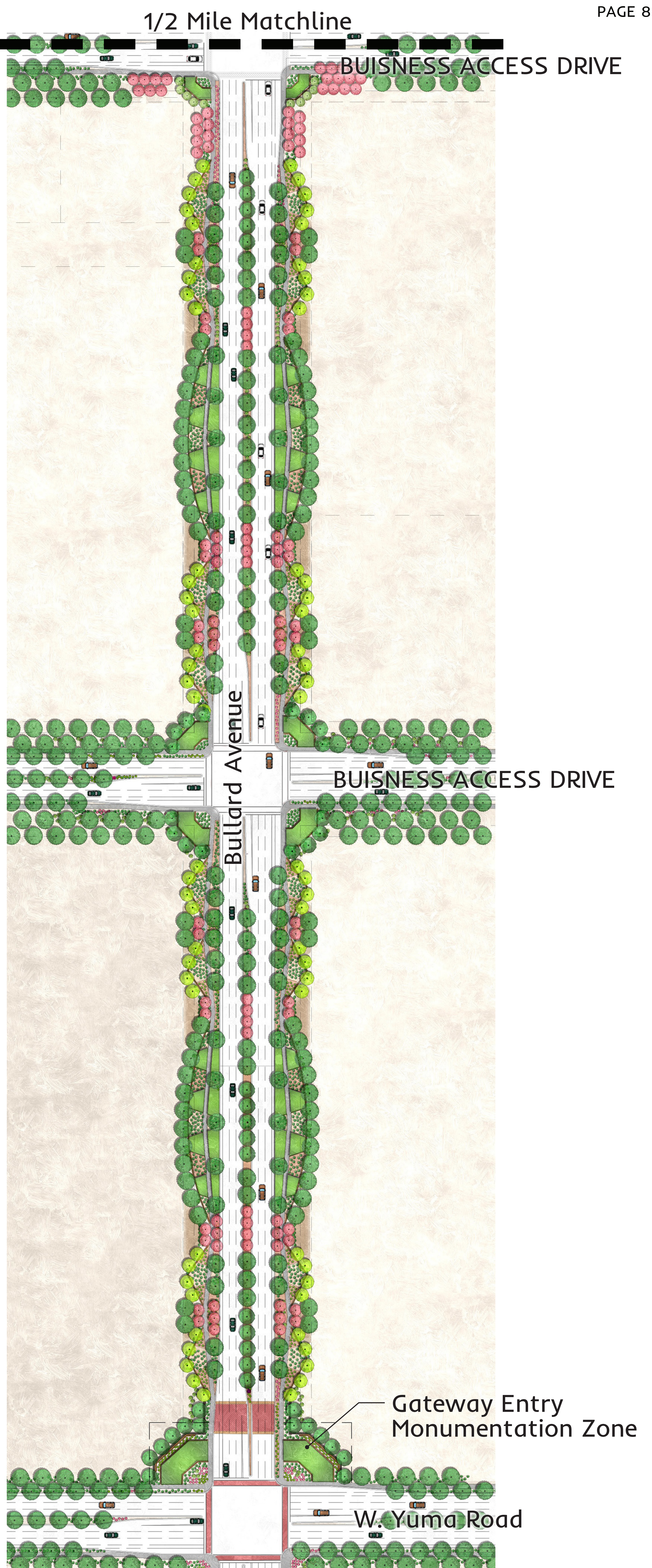
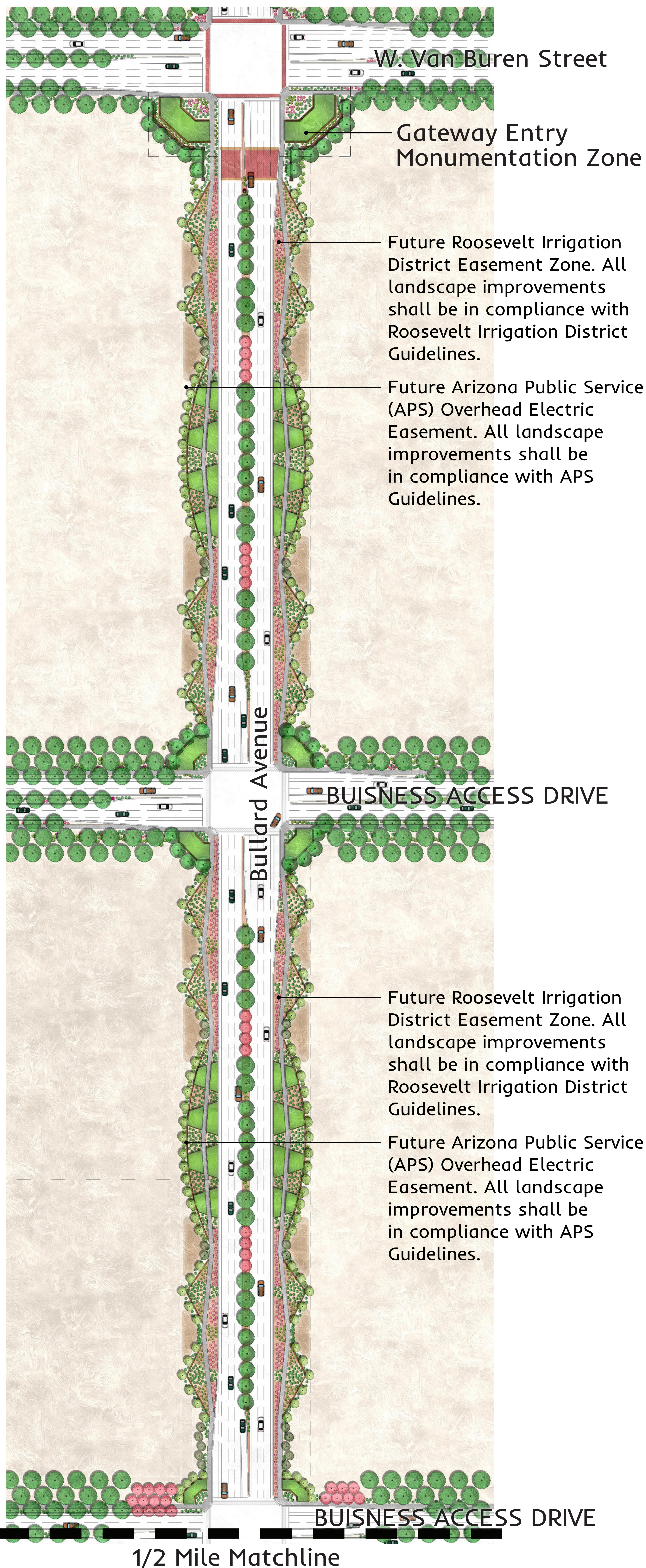
ILLUSTRATIVE SECTION B - STREETSCAPE ZONE



ILLUSTRATIVE SECTION C - W. Van Buren Street to 1/2 Mile



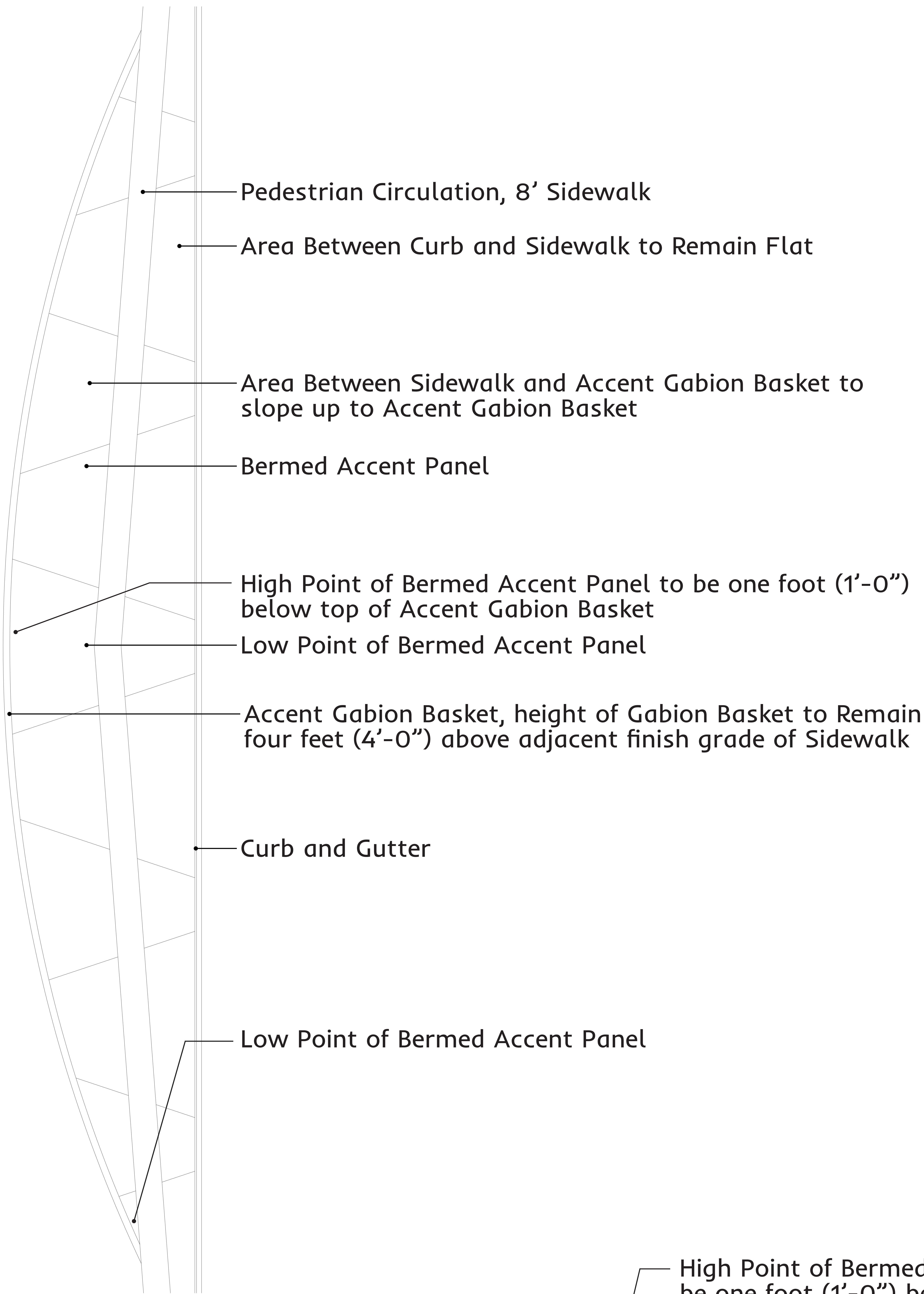
ILLUSTRATIVE SECTION D - W. Yuma Road to 1/2 Mile



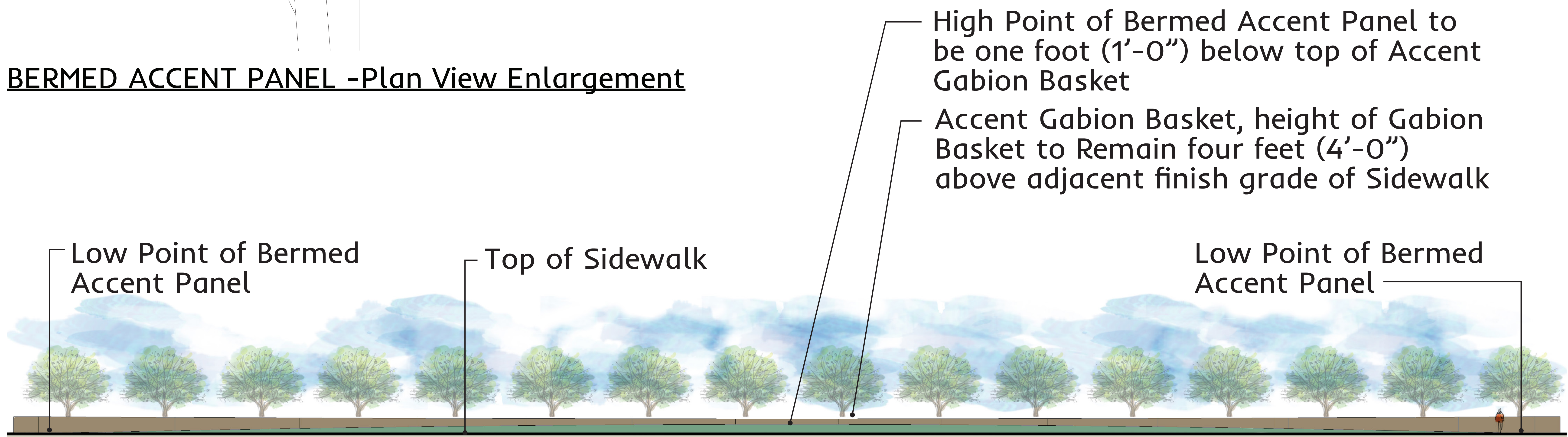
OVERALL ILLUSTRATIVE PLAN



CITY OF GOODYEAR
BULLARD AVENUE CORRIDOR - DESIGN TREATMENT STRATEGIES



BERMED ACCENT PANEL -Plan View Enlargement



BERMED ACCENT PANEL - FRONT ELEVATION

BULLARD AVENUE CORRIDOR SPECIFICATIONS

GATEWAY ENTRY MONUMENTATION – GABION BASKETS

- FINISH: NATURAL RUST
- FILL MATERIAL: 6”-8” ANGULAR RIP RAP TO MATCH ACCENT ROCK IN COLOR
- SIGNAGE: PER CITY OF GOODYEAR



GABION BASKET CHARACTER IMAGES

ICON & THEMATIC ELEMENT

- HEIGHT: 10’-0” MAXIMUM
- WIDTH AT BASE: 5’-0” MAXIMUM



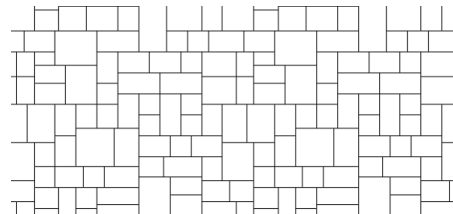
PALETTE OF ICON & THEMATIC ELEMENT

ENHANCED PAVEMENT TREATMENT (CROSSWALK AND ACCENT BAND)

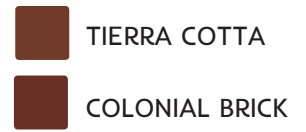
- MATERIAL: STAMPED ASPHALT OR STAMPED CONCRETE PER CITY OF GOODYEAR
- BORDER PATTERN: STACKED BRICK, 2’-0” MAXIMUM WIDTH
- FIELD PATTERN: ASHLAR
- BORDER COLOR: TIERRA COTTA (BROWN)
- FIELD COLOR: COLONIAL BRICK (RED)



BORDER PATTERN: STACKED BRICK

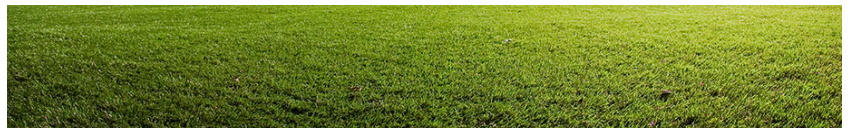


FIELD PATTERN: ASHLAR



ARTIFICIAL TURF (GATEWAY ZONE AND STREETSCAPE ZONE)

- CATEGORY: COMMERCIAL
- THATCH ZONE COLOR: BEIGE OR BROWN
- GRASS ZONE COLOR: GREEN
- FINISHED PILE HEIGHT: MINIMUM OF 2”
- BORDER: RUSTED STEEL HEADER OR 6” WIDE COLORED CONCRETE HEADER



ARTIFICIAL TURF CHARACTER IMAGE

ACCENT GABION BASKETS (STREETSCAPE ZONE)

- FINISH: TO MATCH GATEWAY ENTRY MONUMENTATION
- FILL MATERIAL: TO MATCH GATEWAY ENTRY MONUMENTATION



BULLARD AVENUE CORRIDOR SPECIFICATIONS

LANDSCAPE AREA TOP DRESSING (ROCK)

- PRIMARY ROCK: 1" SCREEN EXPRESS GOLD
- ACCENT ROCK: 6" MINUS EXPRESS BROWN, DESERT NATURAL PAVEMENT, MEDIUM DENSITY

COLORED CONCRETE HEADER (STREETSCAPE ZONE, VAN BUREN SOUTH TO 1/2 MILE)

- STREETSCAPE ZONE WIDTH: 2'-0" WIDE
- COLOR: ADOBE (DAVIS COLOR #61078)

BERMING

- HEIGHT: 3'-0" MAXIMUM AT 4 TO 1 SLOPE MAXIMUM
- TOP DRESSING: ACCENT ROCK

PRIMARY TREES - SHADE TREES

- CERCIDIUM X 'DESERT MUSEUM'/ DESERT MUSEUM
- PISTACIA CHINENSIS/ CHINESE PISTACHE
- PROSOPIS "THORNLESS"/ THORNLESS MESQUITE
- QUERCUS VIRGINIANA/ LIVE OAK
- ULMUS PARVIFOLIA/ CHINESE ELM

SECONDARY TREES - SHADE TREES

- ACACIA ANUERA/ MULGA
- CAESALPINIA CACALACO/ CASCALOTE

ORNAMENTAL TREES

- CHILOPSIS LINEARIS/ DESERT WILLOW
- CHITALPA TASHKENTENSIS/ CHITALPA
- CAESALPINIA CACALACO/ CASCALOTE
- SOPHORA SECUNDIFLORA/ TEXAS MOUNTAIN LAUREL

SMALL TREE PER APS

- ACACIA ANUERA/ MULGA
- CAESALPINIA CACALACO/ CASCALOTE
- SOPHORA SECUNDIFLORA/ TEXAS MOUNTAIN LAUREL

SHURBS

- BOUGAINVILLEA SPECIES/ BOUGAINVILLEA
- CAESALPINIA GILLIESII/ YELLOW BIRD OF PARADISE
- CORDIA BOISSIERI/ TEXAS OLIVE
- CORDIA PARVIFOLIA/ LITTLE LEAF CORDIA
- DODONAEA VISCOSA/ HOPSEED BUSH
- EREMOPHILA HYGROPHANA 'BLUE BELLS'/ BLUE BELLS EMU BUSH
- EREMOPHILA GLABRA 'KALGOORLIE'/ EMU BUSH
- JUSTICIA CALIFORNICA/ CHUPAROSA
- LEUCOPHYLLUM SPECIES/ TEXAS RANGER
- RUELLIA BRITTONIANA/ PURPLE RUELLIA
- SENNA ARTEMISIOIDES/ SILVER CASSIA
- SIMMONDSIA CHINENSIS/ JOJOBA
- TECOMA STANS/ YELLOW BELLS

CACTI & SUCCULENTS

- AGAVE GEMINIFLORA/ TWIN-FLOWERED AGAVE
- AGAVE PARRYI/ PARRY'S AGAVE
- AGAVE WEBERII/ WEBER'S AGAVE
- ALOE 'BLUE ELF'/ BLUE ELF ALOE
- DASYLIRION WHEELERI/ DESERT SPOON
- ECHINOCACTUS GRUSONII/ GOLDEN BARREL
- EUPHORBIA ANTISYPHILITICA/ CANDELILLA
- HESPERALOE FUNIFERA/ GIANT HESPERALOE



CITY OF GOODYEAR BULLARD AVENUE CORRIDOR DESIGN TREATMENT STRATEGIES SPECIFICATIONS

NOVEMBER 2018



BULLARD AVENUE CORRIDOR SPECIFICATIONS

CACTI & SUCCULENTS CONTINUED

- HESPERALOE PARVIFLORA 'BRAKELIGHT'/ BRAKELIGHT RED YUCCA
- NOLINA MICROCARPA/ BEAR GRASS
- OPUNTIA BAILARIS/ BEAVERTAIL PRICKLY PEAR
- OPUNTIA SANTA-RITA/ PURPLE PRICKLY PEAR
- YUCCA BACCATA/ BANANA YUCCA
- YUCCA PALLIDA/ PALELEAF YUCCA

GROUNDCOVERS

- ACACIA REDOLENS/ DESERT CARPET
- EREMOPHILA GLABRA 'MINGENOW GOLD'/ OUTBACK SUNRISE EMU BUSH
- LANTANA MONTEVIDENSIS/ PURPLE TRAILING LANTANA
- LANTANA X 'NEW GOLD'/ NEW GOLD LANTANA
- ROSMARINUS OFFICINALIS 'PROSTRATUS'/ TRAILING ROSEMARY

VINES

- BOUGAINVILLEA SPECIES/ BOUGAINVILLEA

PLANTING CHARACTER IMAGES - GROUPINGS AND MASSINGS

