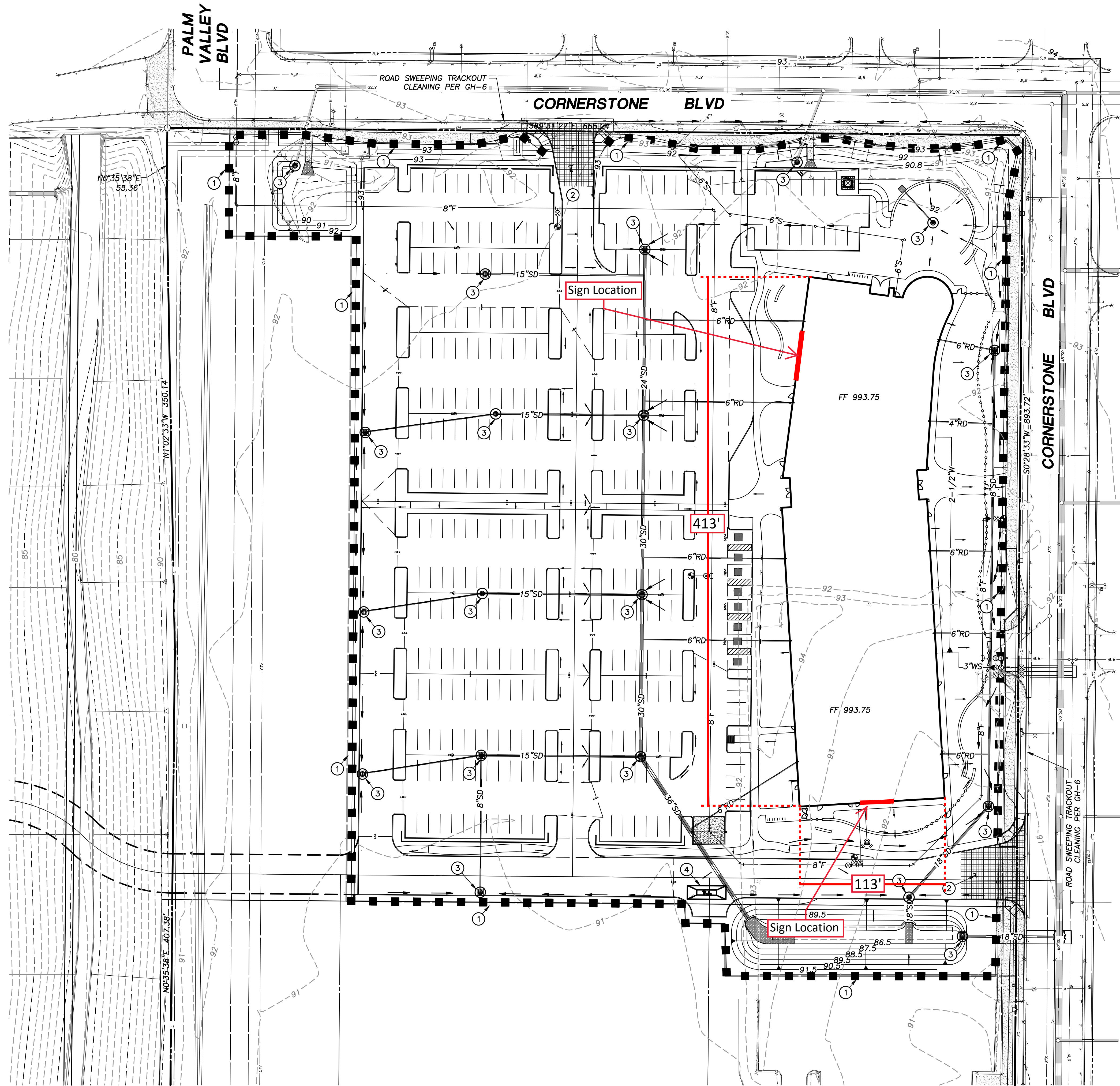


C:\Users\1604\ALTA West\_Vr\_MOB\SHEETS\1604\_2\_SWPP.dwg, 2/8/2018  
S:\A3\1604\ALTA




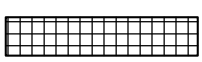
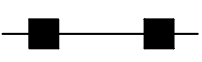
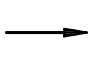

## FINAL PLAN

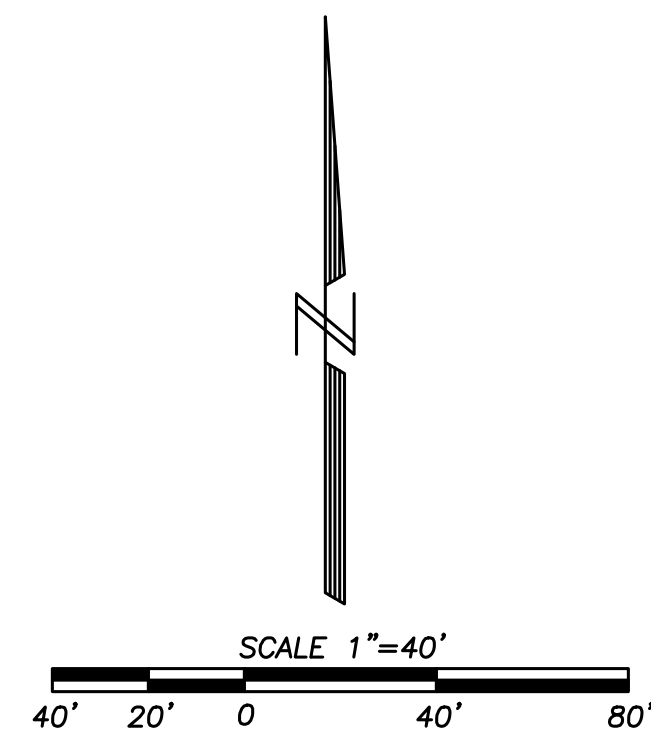
CONTROLS FOR FINAL COMPLETION OF SITE

### CONSTRUCTION NOTES

- 1 REMOVE SILT FENCE.
- 2 REMOVE STABILIZED CONSTRUCTION ENTRANCE.
- 3 REMOVE DROP INLET BARRIER.
- 4 REMOVE WASH OUT AREA.

### LEGEND

-  DROP INLET SEDIMENT BARRIER PER BMP 72, SHEET SW5
-  LOCATION FOR STABILIZED CONSTRUCTION ENTRANCE, PER BMP 37-39, SHEET SW5
-  LOCATION FOR SILT FENCE OR WATTLES, PER BMP 67 AND SPC-1, SHEET SW5
-  DIRECTIONAL FLOW ARROWS
-  WASH OUT AREA



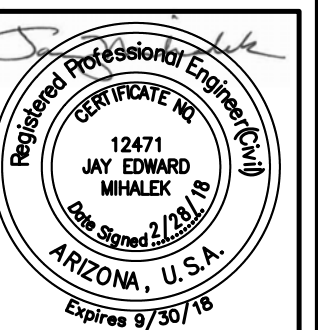
JMA ENGINEERING CORPORATION

JMA

531 E. Bethany Home Road, Garden Suite  
Phoenix, Arizona 85012  
Voice 602.248.0286  
Fax 602.248.0976

SWPPP FINAL PLAN  
ADELANTE HEALTHCARE GOODYEAR  
13471 WEST CORNERSTONE BOULEVARD, GOODYEAR, AZ

|         |        |
|---------|--------|
| Manager | FDM    |
| Checked | JM     |
| Job No. | 1604.2 |



1988 - 2018  
Celebrating 30 Years

SHEET  
**SW4**  
4 OF 5

TWO WORKING DAYS BEFORE YOU DIG  
CALL FOR THE BLUE STAKES  
602-263-1100  
BLUE STAKE CENTER

2017-4826-C1-013

HTE 17-8426