



BULLARD AVENUE CORRIDOR

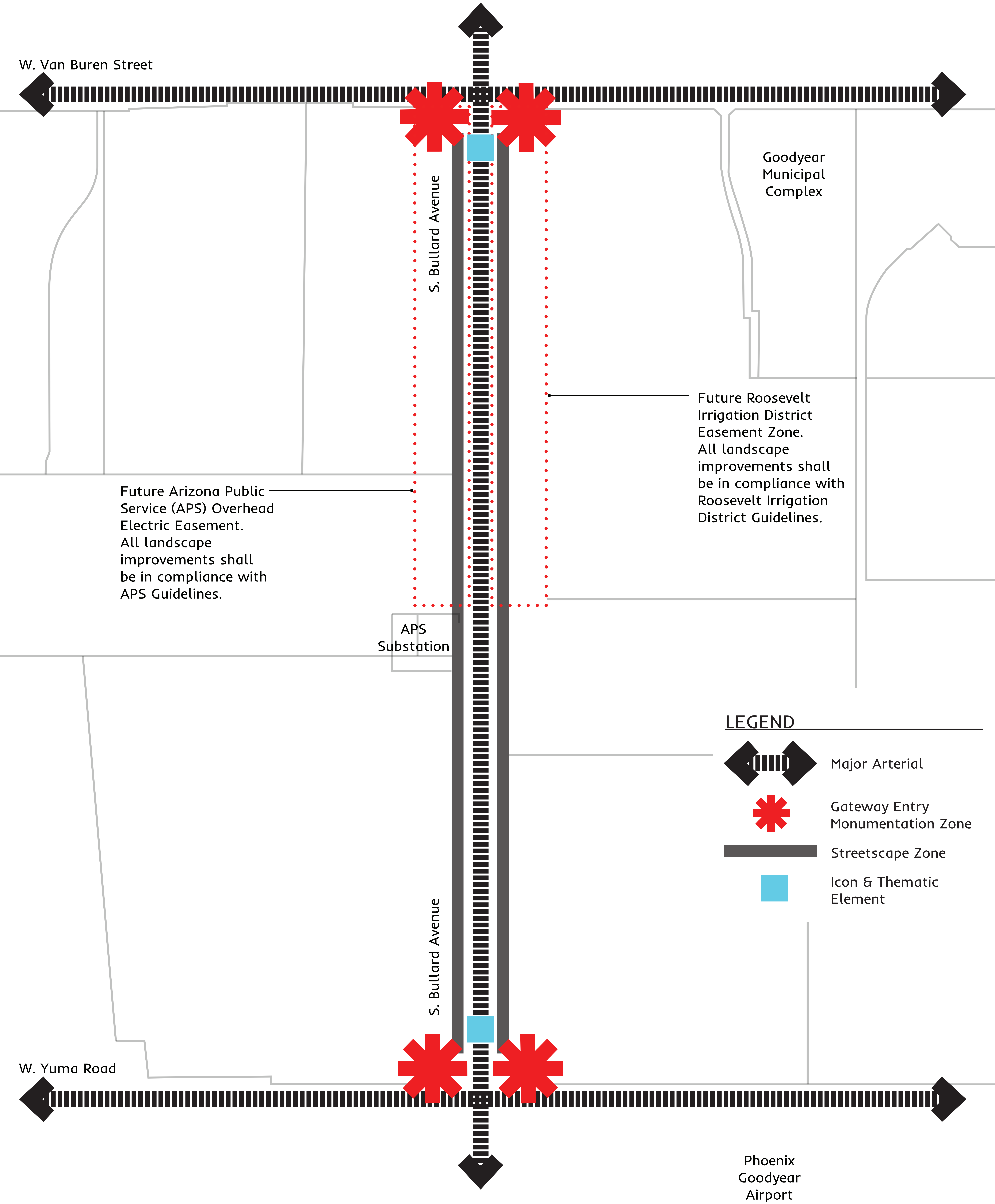
DESIGN TREATMENT STRATEGIES

NOVEMBER 2018



SWABACK_{pllc}
Architects + Planners





Future Arizona Public Service (APS) Overhead Electric Easement. All landscape improvements shall be in compliance with APS Guidelines.

APS Substation

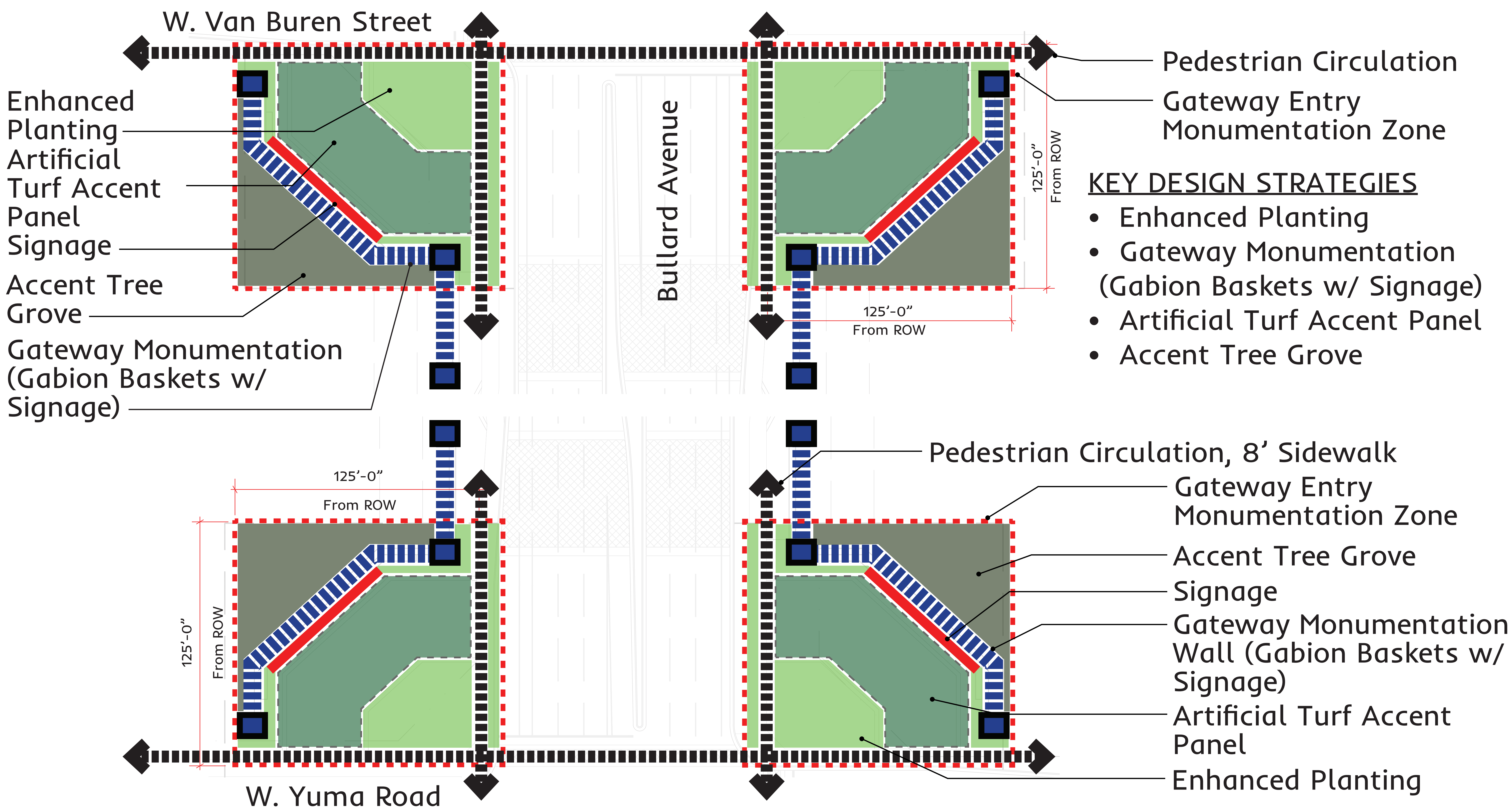
Future Roosevelt Irrigation District Easement Zone. All landscape improvements shall be in compliance with Roosevelt Irrigation District Guidelines.

LEGEND

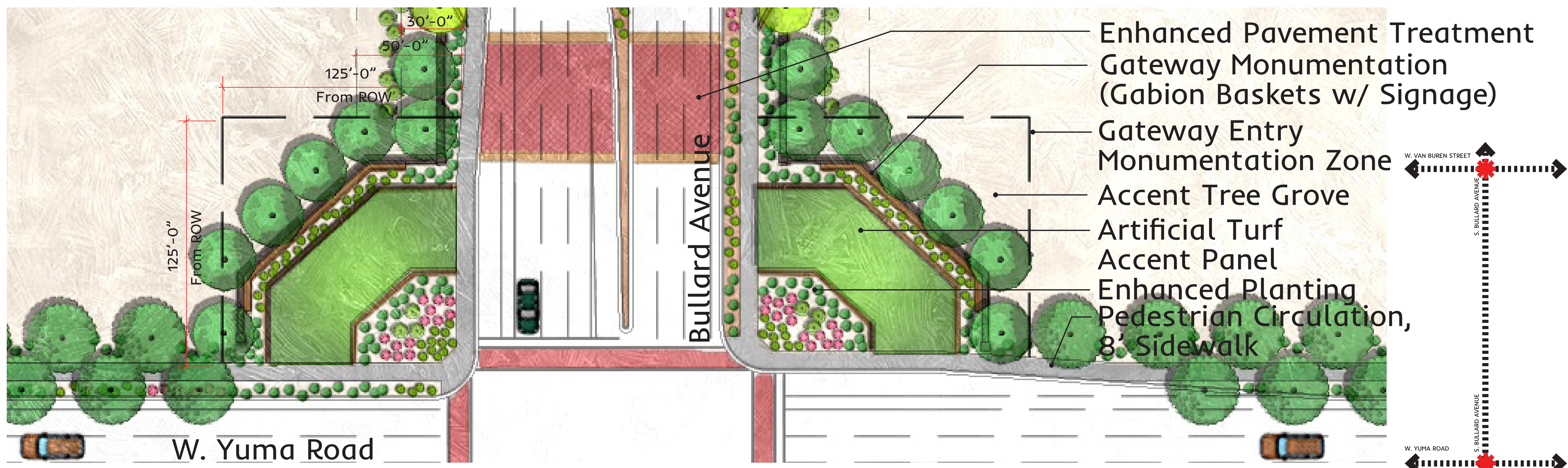
- Major Arterial
- Gateway Entry Monumentation Zone
- Streetscape Zone
- Icon & Thematic Element



GATEWAY ENTRY MONUMENTATION ZONE

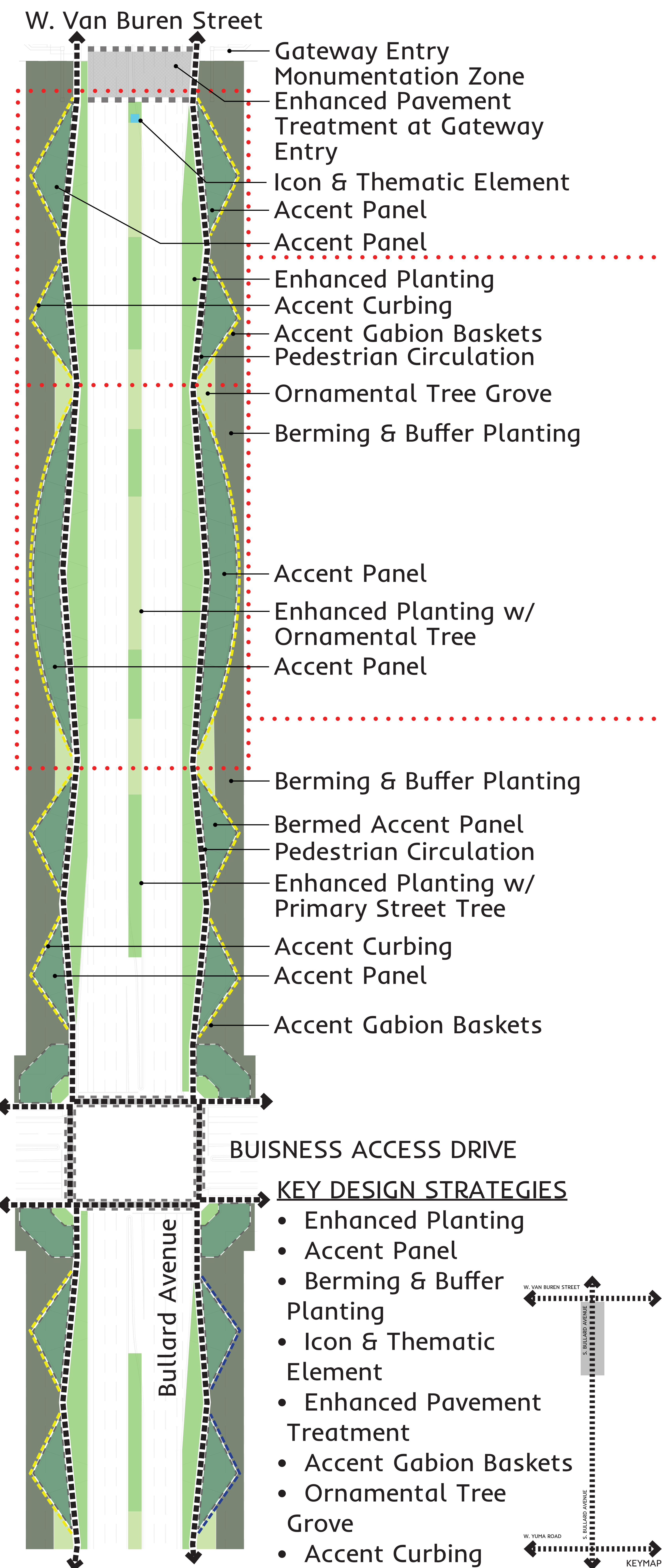


GATEWAY ENTRY MONUMENTATION ZONE - DESIGN FRAMEWORK

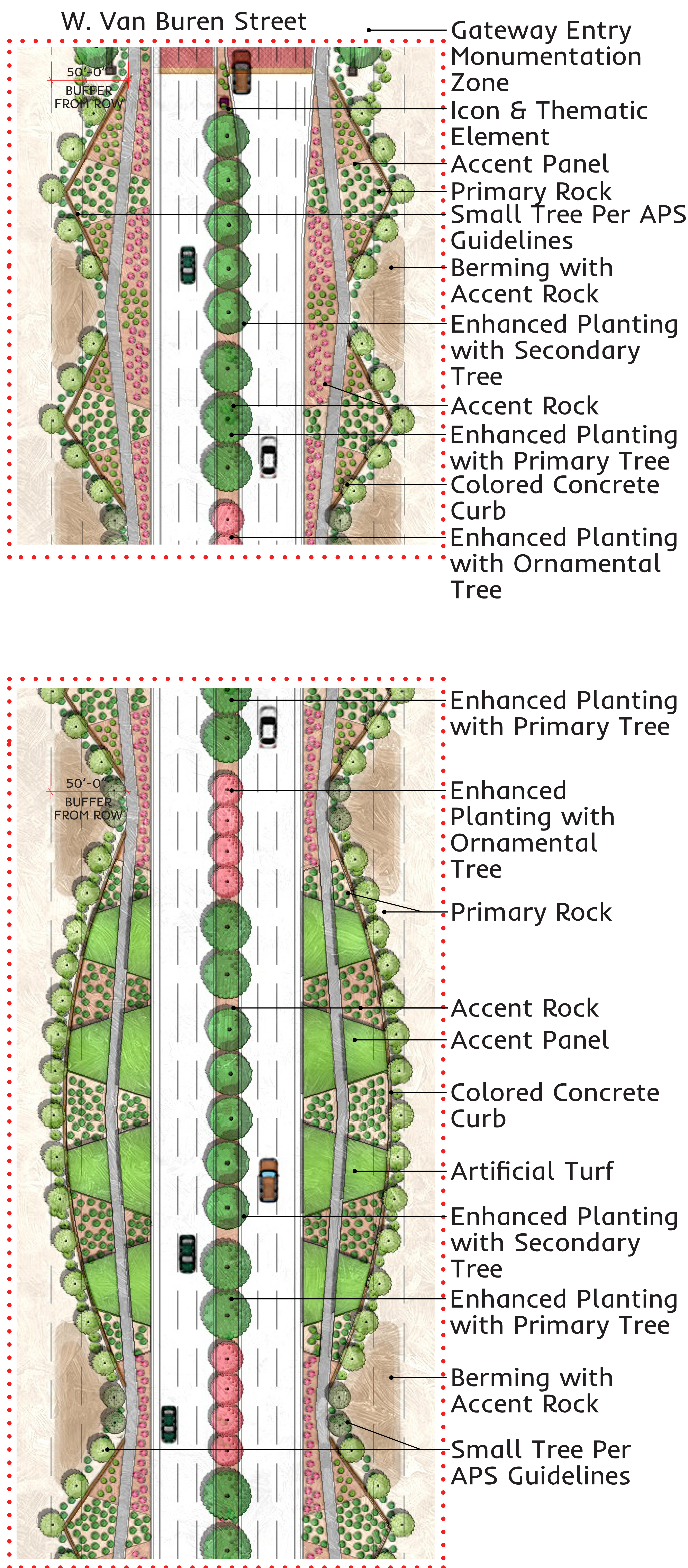


GATEWAY ENTRY MONUMENTATION ZONE - ILLUSTRATIVE PLAN

STREETSCAPE ZONE - W. Van Buren Street to 1/2 (APS & RID Easements)

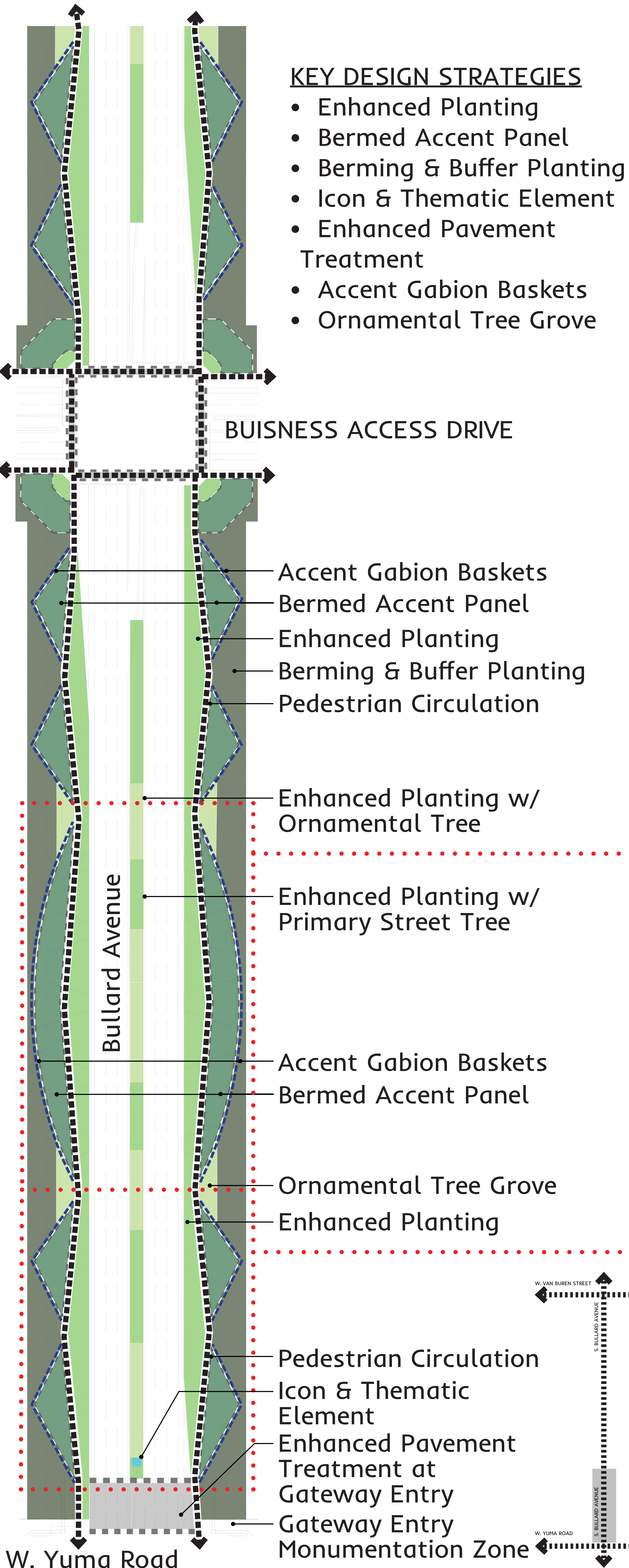


STREETSCAPE ZONE - W. Van Buren Street to 1/2 Mile - DESIGN FRAMEWORK

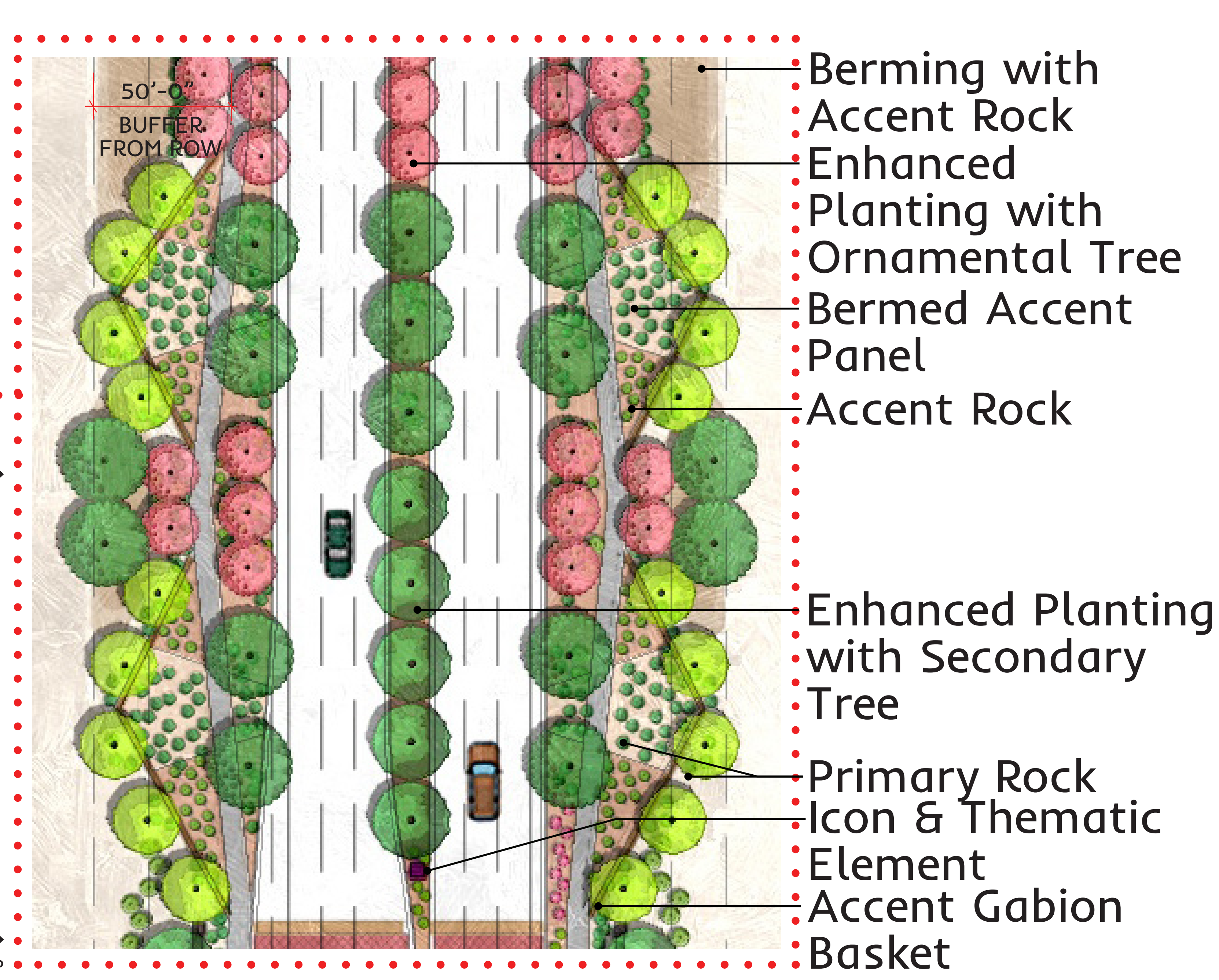
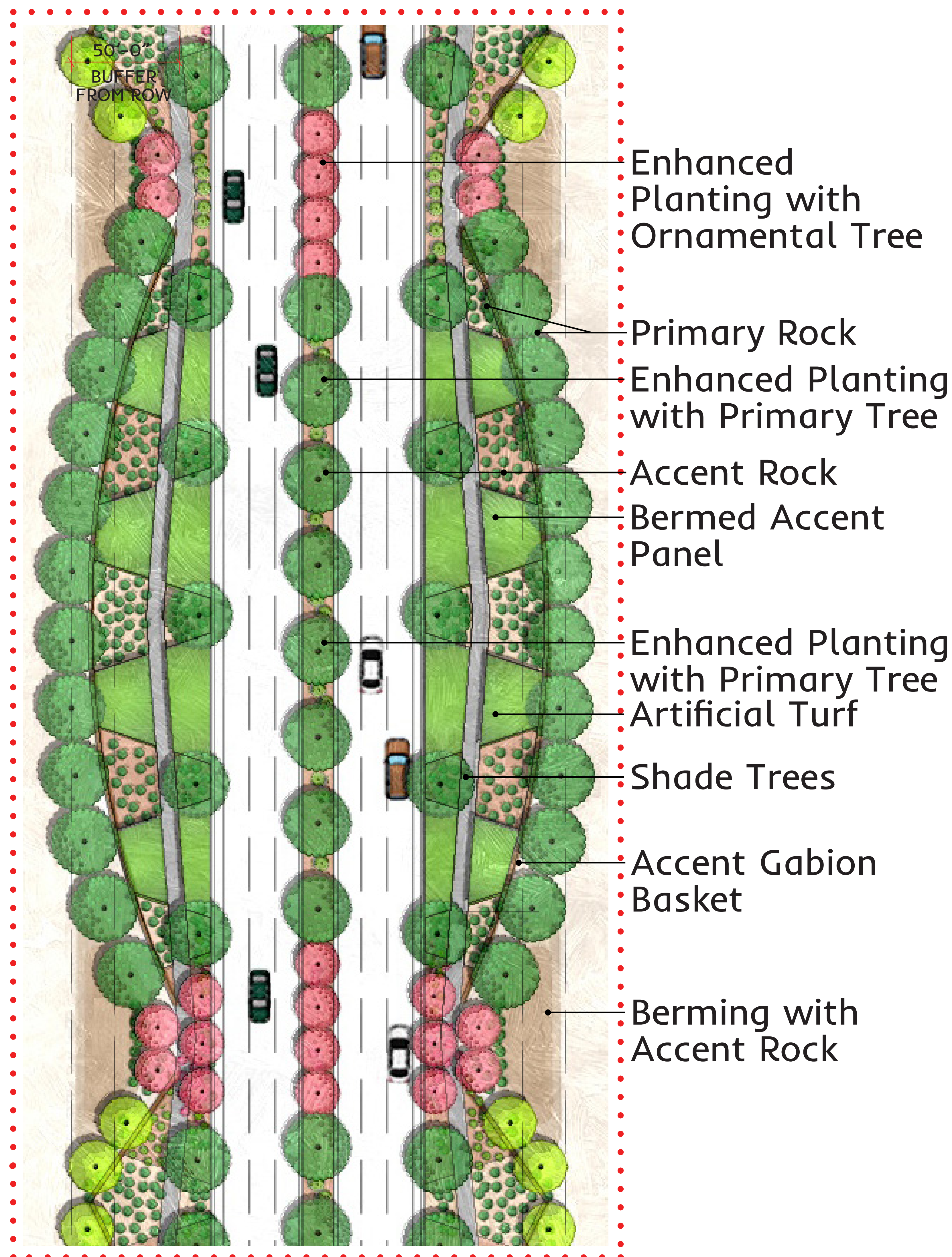


STREETSCAPE ZONE - W. Van Buren Street to 1/2 Mile - ILLUSTRATIVE PLAN ENLARGEMENTS

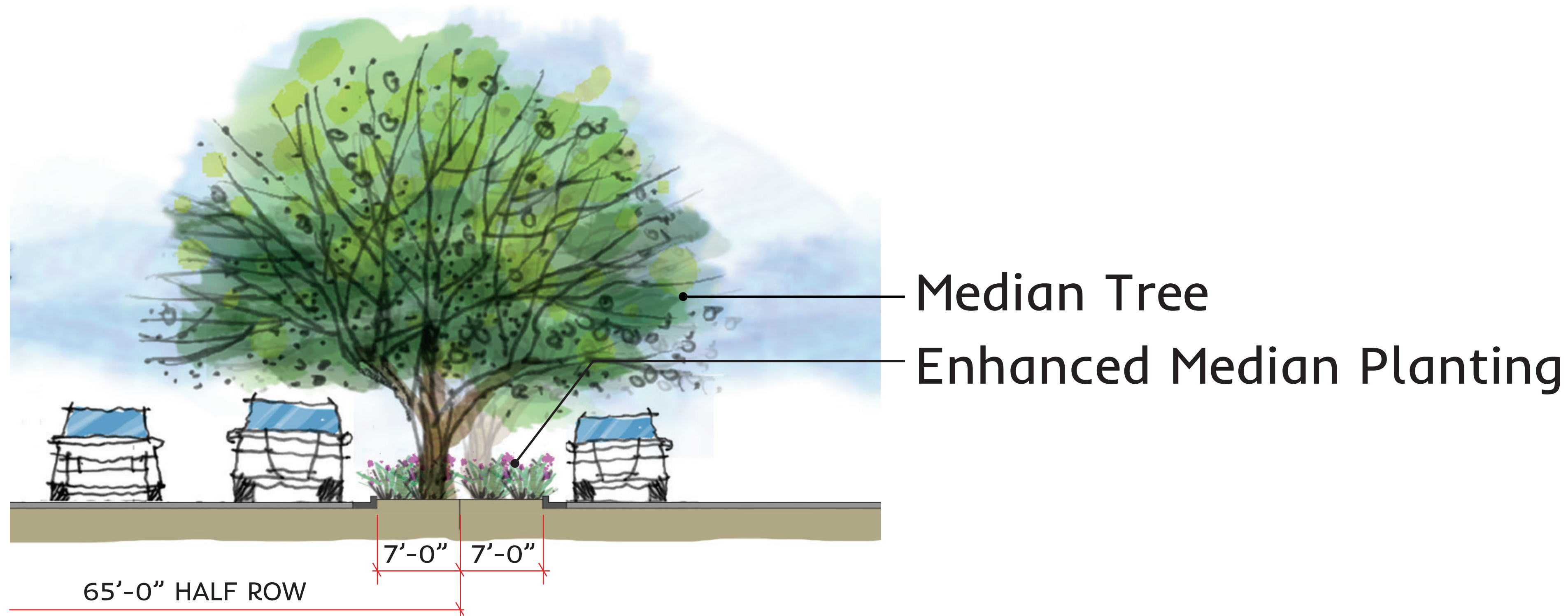
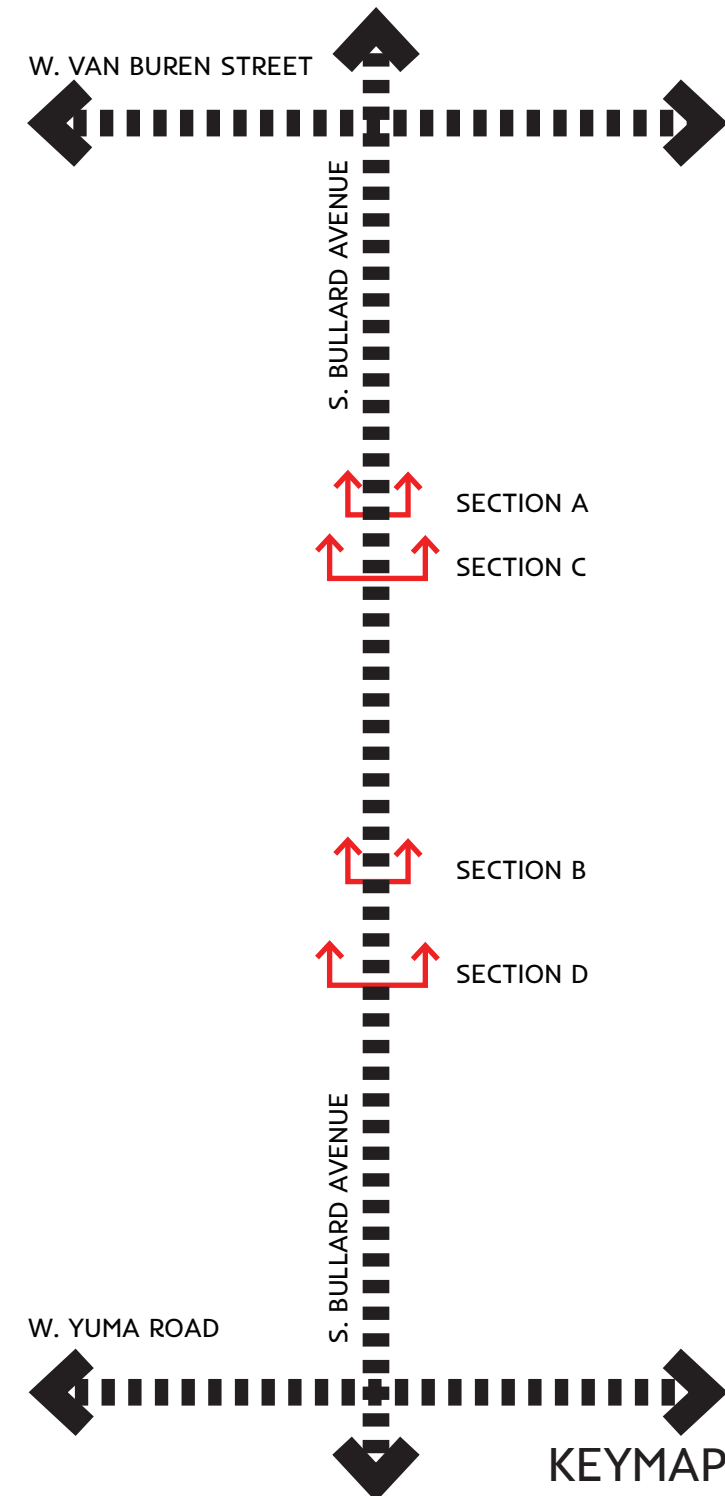
STREETSCAPE ZONE - W. Yuma Road to 1/2 Mile



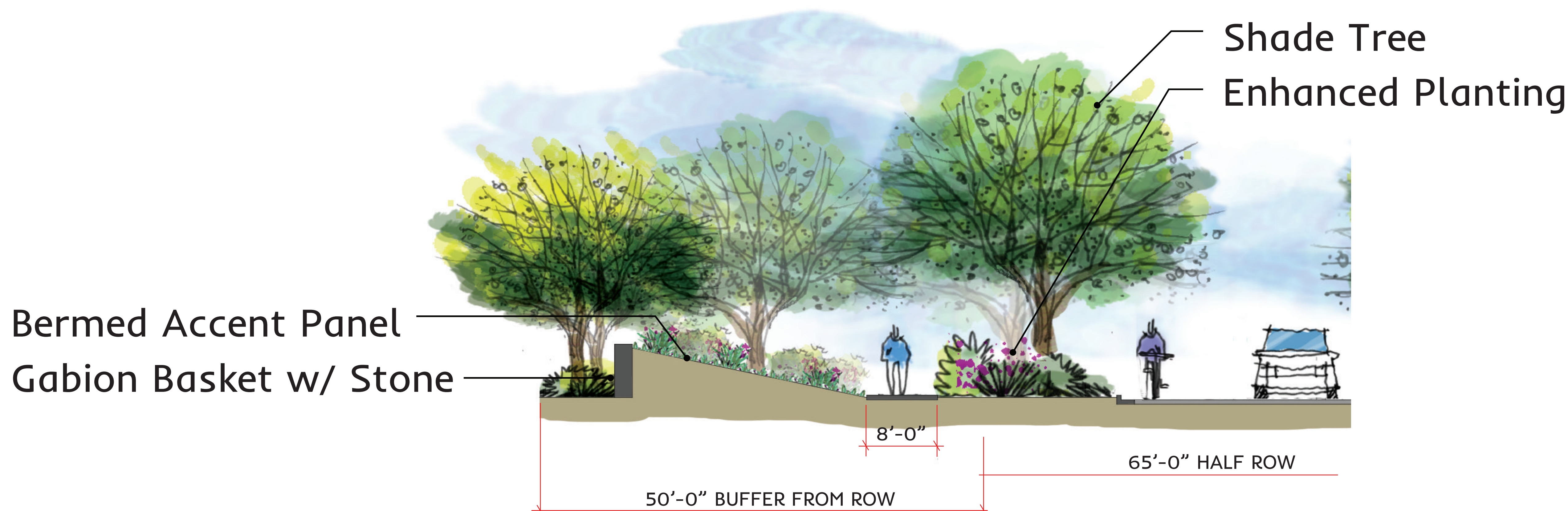
STREETSCAPE ZONE - W. Yuma Road to 1/2 Mile
DESIGN FRAMEWORK



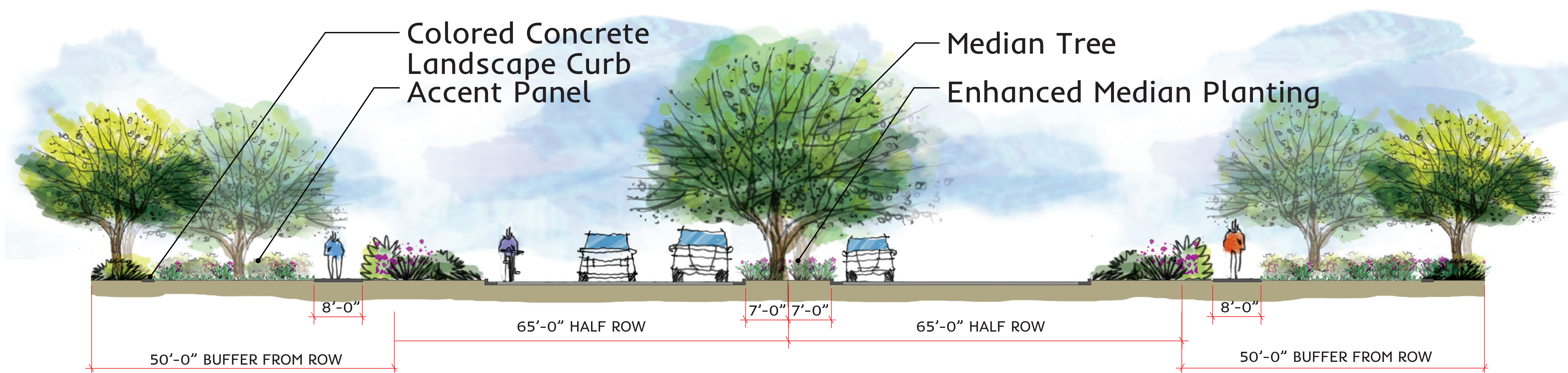
STREETSCAPE ZONE - W. Yuma Road to 1/2 Mile
ILLUSTRATIVE PLAN ENLARGEMENTS



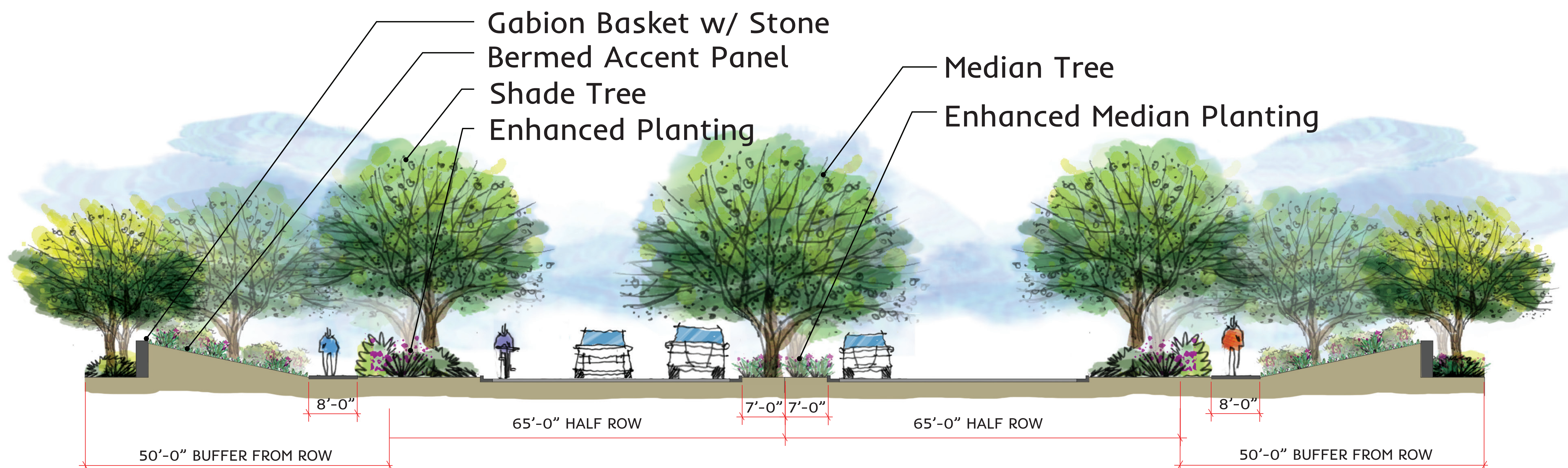
ILLUSTRATIVE SECTION A - MEDIAN



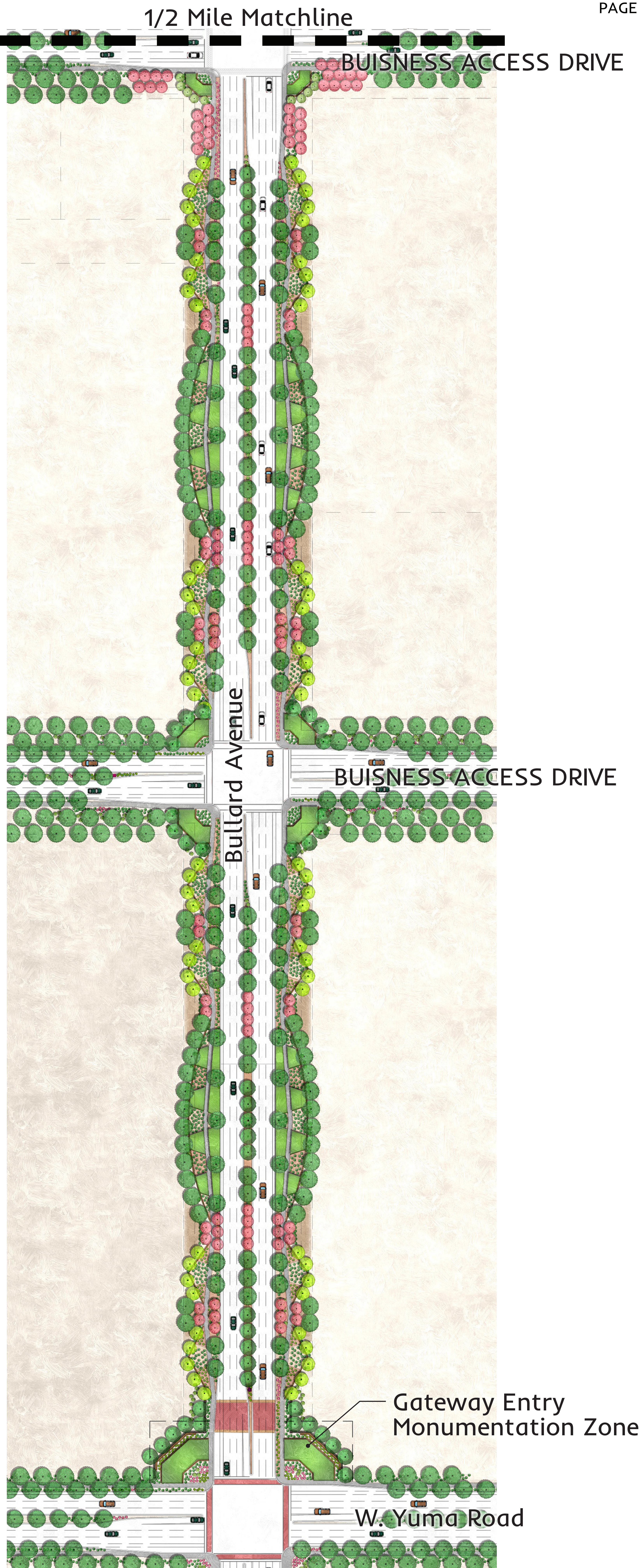
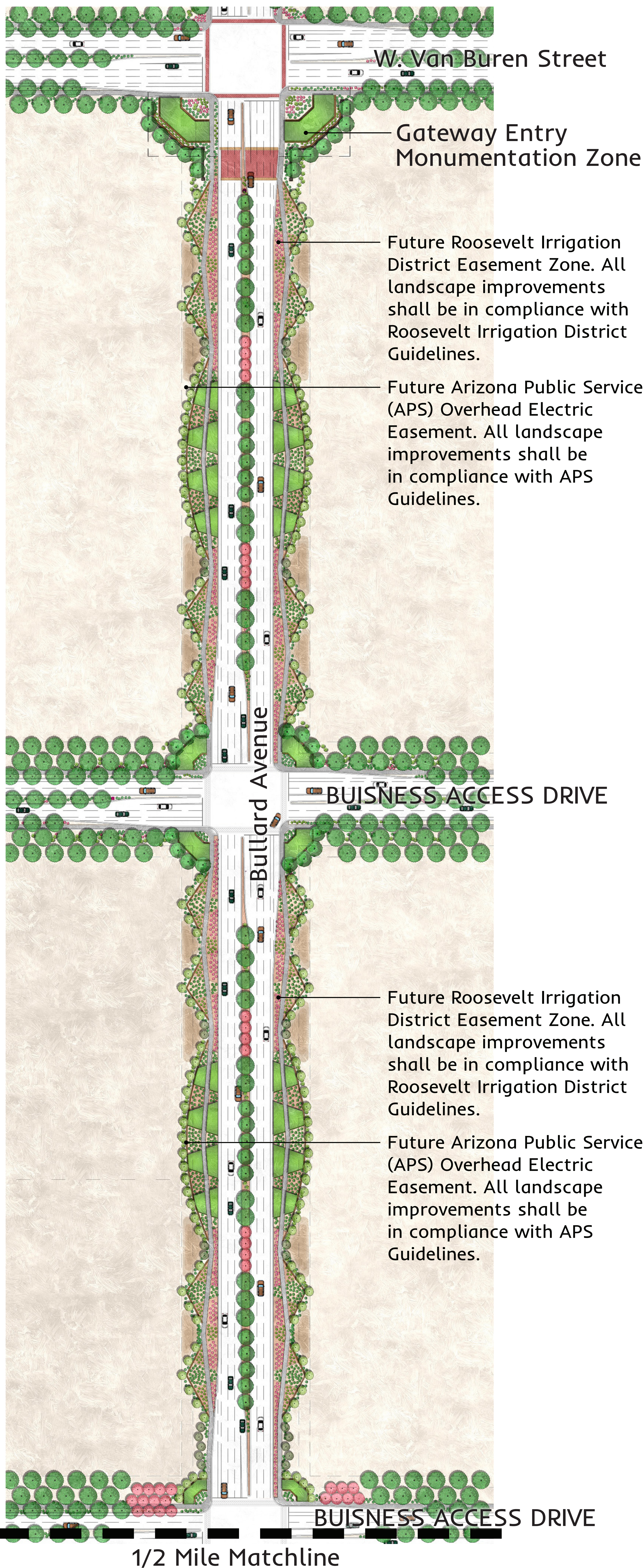
ILLUSTRATIVE SECTION B - STREETSCAPE ZONE



ILLUSTRATIVE SECTION C - W. Van Buren Street to 1/2 Mile



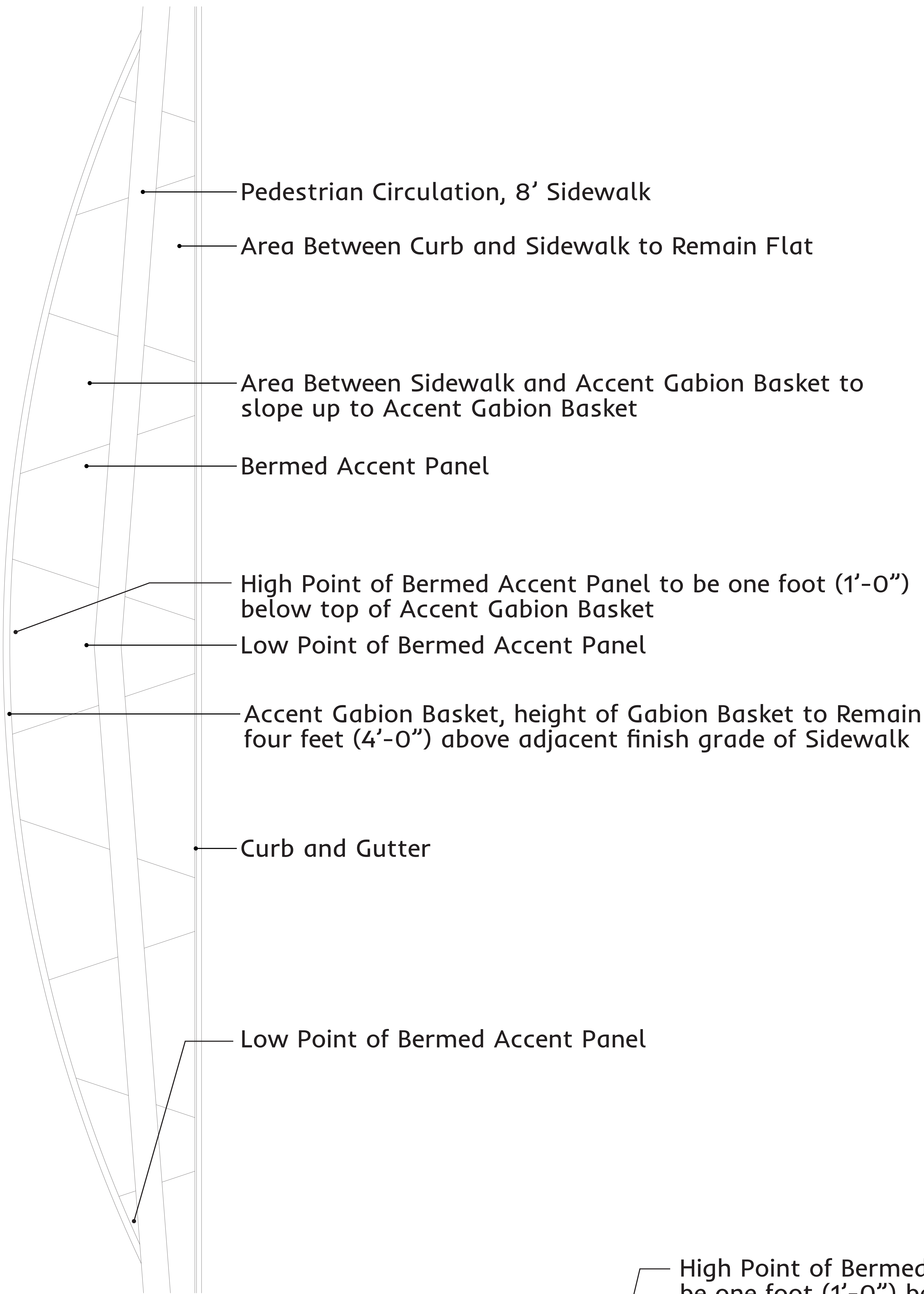
ILLUSTRATIVE SECTION D - W. Yuma Road to 1/2 Mile



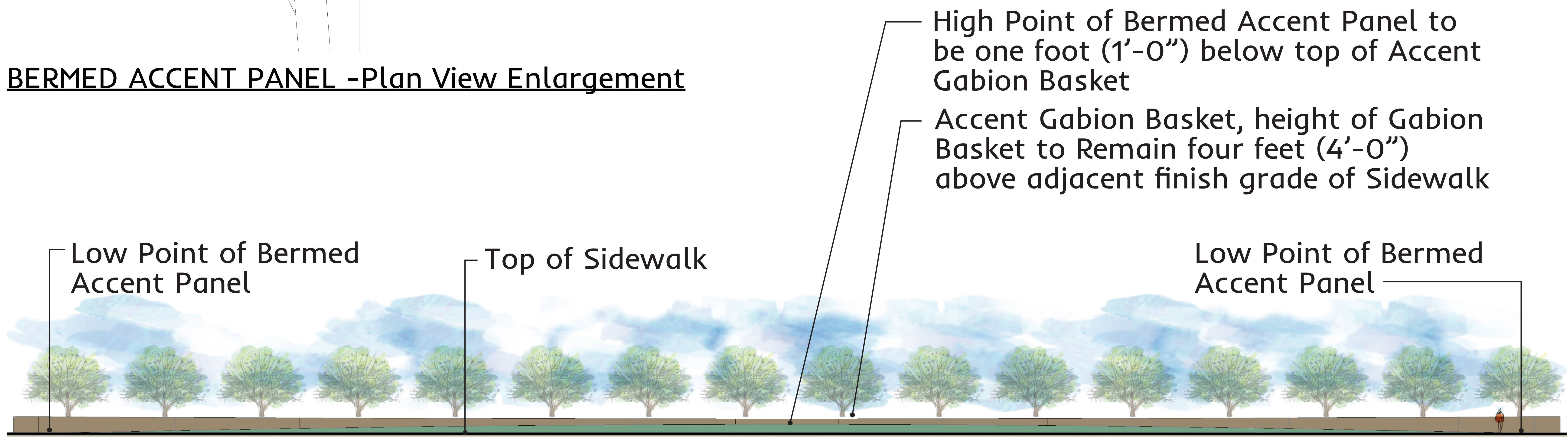
OVERALL ILLUSTRATIVE PLAN



CITY OF GOODYEAR
BULLARD AVENUE CORRIDOR - DESIGN TREATMENT STRATEGIES



BERMED ACCENT PANEL -Plan View Enlargement



BERMED ACCENT PANEL - FRONT ELEVATION

BULLARD AVENUE CORRIDOR SPECIFICATIONS

GATEWAY ENTRY MONUMENTATION – GABION BASKETS

- FINISH: NATURAL RUST
- FILL MATERIAL: 6”-8” ANGULAR RIP RAP TO MATCH ACCENT ROCK IN COLOR
- SIGNAGE: PER CITY OF GOODYEAR



GABION BASKET CHARACTER IMAGES

ICON & THEMATIC ELEMENT

- HEIGHT: 10’-0” MAXIMUM
- WIDTH AT BASE: 5’-0” MAXIMUM



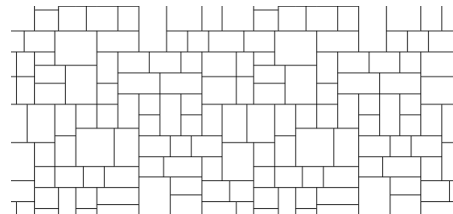
PALETTE OF ICON & THEMATIC ELEMENT

ENHANCED PAVEMENT TREATMENT (CROSSWALK AND ACCENT BAND)

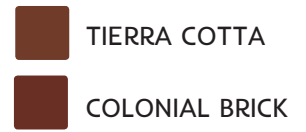
- MATERIAL: STAMPED ASPHALT OR STAMPED CONCRETE PER CITY OF GOODYEAR
- BORDER PATTERN: STACKED BRICK, 2’-0” MAXIMUM WIDTH
- FIELD PATTERN: ASHLAR
- BORDER COLOR: TIERRA COTTA (BROWN)
- FIELD COLOR: COLONIAL BRICK (RED)



BORDER PATTERN: STACKED BRICK

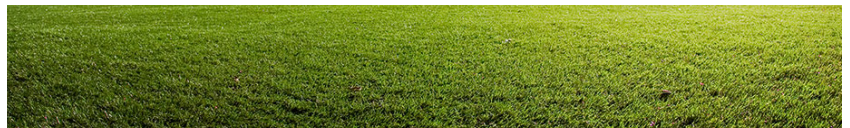


FIELD PATTERN: ASHLAR



ARTIFICIAL TURF (GATEWAY ZONE AND STREETScape ZONE)

- CATEGORY: COMMERCIAL
- THATCH ZONE COLOR: BEIGE OR BROWN
- GRASS ZONE COLOR: GREEN
- FINISHED PILE HEIGHT: MINIMUM OF 2”
- BORDER: RUSTED STEEL HEADER OR 6” WIDE COLORED CONCRETE HEADER



ARTIFICIAL TURF CHARACTER IMAGE

ACCENT GABION BASKETS (STREETSCAPE ZONE)

- FINISH: TO MATCH GATEWAY ENTRY MONUMENTATION
- FILL MATERIAL: TO MATCH GATEWAY ENTRY MONUMENTATION



BULLARD AVENUE CORRIDOR SPECIFICATIONS

LANDSCAPE AREA TOP DRESSING (ROCK)

- PRIMARY ROCK: 1" SCREEN EXPRESS GOLD
- ACCENT ROCK: 6" MINUS EXPRESS BROWN, DESERT NATURAL PAVEMENT, MEDIUM DENSITY

COLORED CONCRETE HEADER (STREETSCAPE ZONE, VAN BUREN SOUTH TO 1/2 MILE)

- STREETSCAPE ZONE WIDTH: 2'-0" WIDE
- COLOR: ADOBE (DAVIS COLOR #61078)

BERMING

- HEIGHT: 3'-0" MAXIMUM AT 4 TO 1 SLOPE MAXIMUM
- TOP DRESSING: ACCENT ROCK

PRIMARY TREES - SHADE TREES

- CERCIDIUM X 'DESERT MUSEUM'/ DESERT MUSEUM
- PISTACIA CHINENSIS/ CHINESE PISTACHE
- PROSOPIS "THORNLESS"/ THORNLESS MESQUITE
- QUERCUS VIRGINIANA/ LIVE OAK
- ULMUS PARVIFOLIA/ CHINESE ELM

SECONDARY TREES - SHADE TREES

- ACACIA ANUERA/ MULGA
- CAESALPINIA CACALACO/ CASCALOTE

ORNAMENTAL TREES

- CHILOPSIS LINEARIS/ DESERT WILLOW
- CHITALPA TASHKENTENSIS/ CHITALPA
- CAESALPINIA CACALACO/ CASCALOTE
- SOPHORA SECUNDIFLORA/ TEXAS MOUNTAIN LAUREL

SMALL TREE PER APS

- ACACIA ANUERA/ MULGA
- CAESALPINIA CACALACO/ CASCALOTE
- SOPHORA SECUNDIFLORA/ TEXAS MOUNTAIN LAUREL

SHURBS

- BOUGAINVILLEA SPECIES/ BOUGAINVILLEA
- CAESALPINIA GILLIESII/ YELLOW BIRD OF PARADISE
- CORDIA BOISSIERI/ TEXAS OLIVE
- CORDIA PARVIFOLIA/ LITTLE LEAF CORDIA
- DODONAEA VISCOSA/ HOPSEED BUSH
- EREMOPHILA HYGROPHANA 'BLUE BELLS'/ BLUE BELLS EMU BUSH
- EREMOPHILA GLABRA 'KALGOORLIE'/ EMU BUSH
- JUSTICIA CALIFORNICA/ CHUPAROSA
- LEUCOPHYLLUM SPECIES/ TEXAS RANGER
- RUELLIA BRITTONIANA/ PURPLE RUELLIA
- SENNA ARTEMISIOIDES/ SILVER CASSIA
- SIMMONDSIA CHINENSIS/ JOJOBA
- TECOMA STANS/ YELLOW BELLS

CACTI & SUCCULENTS

- AGAVE GEMINIFLORA/ TWIN-FLOWERED AGAVE
- AGAVE PARRYI/ PARRY'S AGAVE
- AGAVE WEBERII/ WEBER'S AGAVE
- ALOE 'BLUE ELF'/ BLUE ELF ALOE
- DASYLIRION WHEELERI/ DESERT SPOON
- ECHINOCACTUS GRUSONII/ GOLDEN BARREL
- EUPHORBIA ANTISYPHILITICA/ CANDELILLA
- HESPERALOE FUNIFERA/ GIANT HESPERALOE



CITY OF GOODYEAR BULLARD AVENUE CORRIDOR DESIGN TREATMENT STRATEGIES SPECIFICATIONS

NOVEMBER 2018



BULLARD AVENUE CORRIDOR SPECIFICATIONS

CACTI & SUCCULENTS CONTINUED

- HESPERALOE PARVIFLORA 'BRAKELIGHT'/ BRAKELIGHT RED YUCCA
- NOLINA MICROCARPA/ BEAR GRASS
- OPUNTIA BAILARIS/ BEAVERTAIL PRICKLY PEAR
- OPUNTIA SANTA-RITA/ PURPLE PRICKLY PEAR
- YUCCA BACCATA/ BANANA YUCCA
- YUCCA PALLIDA/ PALELEAF YUCCA

GROUNDCOVERS

- ACACIA REDOLENS/ DESERT CARPET
- EREMOPHILA GLABRA 'MINGENOW GOLD'/ OUTBACK SUNRISE EMU BUSH
- LANTANA MONTEVIDENSIS/ PURPLE TRAILING LANTANA
- LANTANA X 'NEW GOLD'/ NEW GOLD LANTANA
- ROSMARINUS OFFICINALIS 'PROSTRATUS'/ TRAILING ROSEMARY

VINES

- BOUGAINVILLEA SPECIES/ BOUGAINVILLEA

PLANTING CHARACTER IMAGES - GROUPINGS AND MASSINGS

