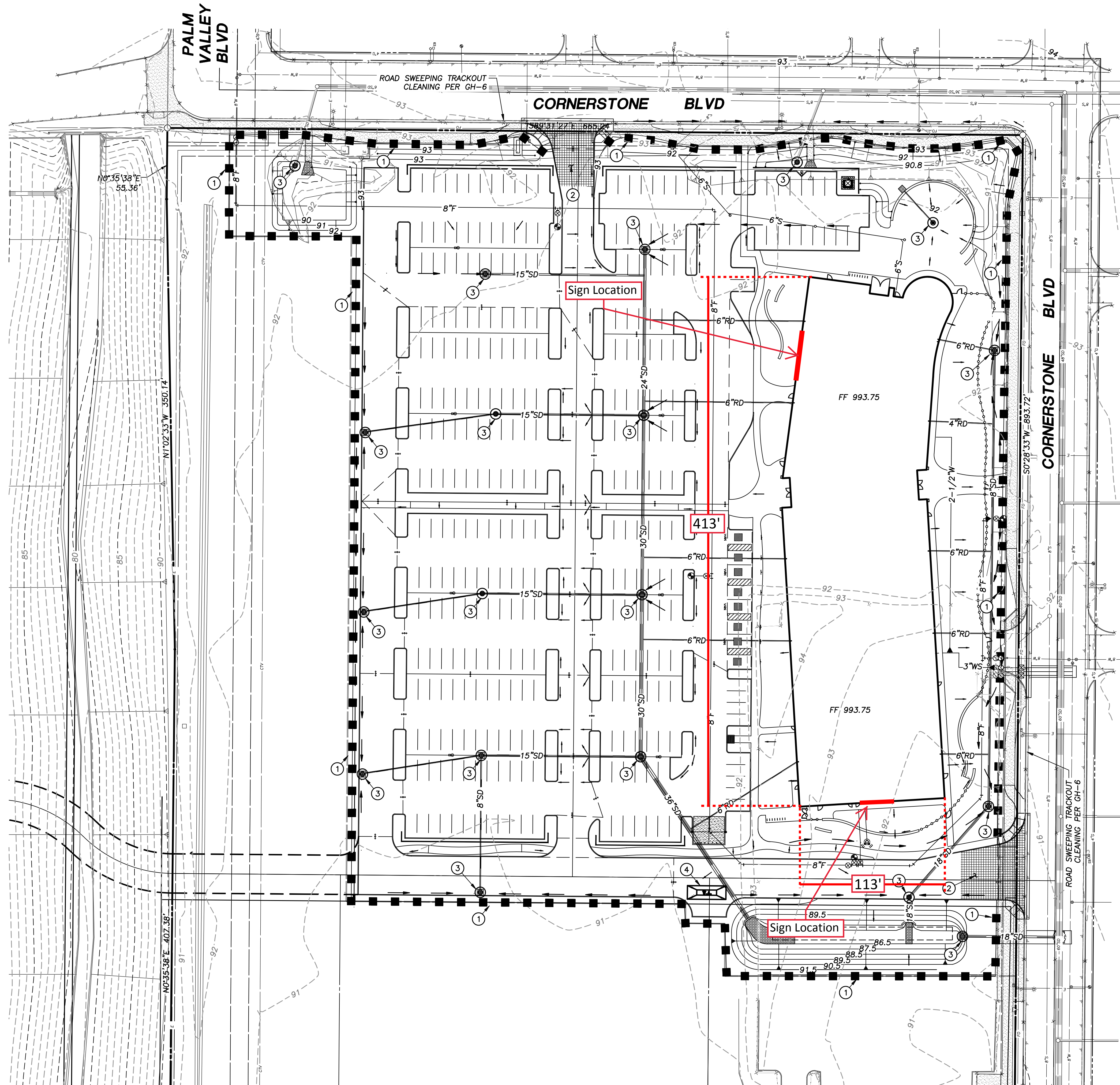


C:\Users\1604\ALTA West_Vr_MOB\SHEETS\1604_2_SWPP.dwg, 2/8/2018
S:\A3\1604\ALTA




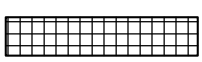
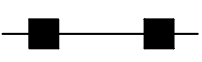
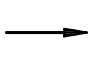

FINAL PLAN

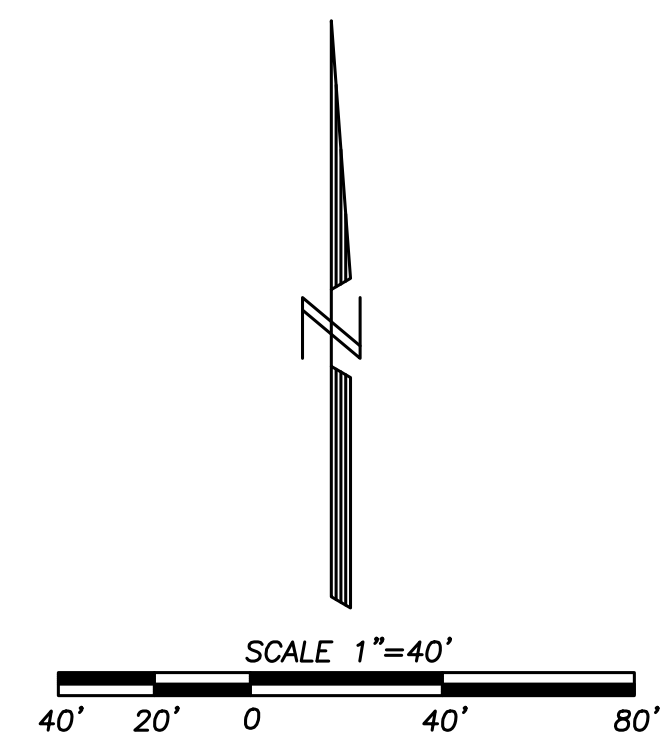
CONTROLS FOR FINAL COMPLETION OF SITE

CONSTRUCTION NOTES

- 1 REMOVE SILT FENCE.
- 2 REMOVE STABILIZED CONSTRUCTION ENTRANCE.
- 3 REMOVE DROP INLET BARRIER.
- 4 REMOVE WASH OUT AREA.

LEGEND

-  DROP INLET SEDIMENT BARRIER PER BMP 72, SHEET SW5
-  LOCATION FOR STABILIZED CONSTRUCTION ENTRANCE, PER BMP 37-39, SHEET SW5
-  LOCATION FOR SILT FENCE OR WATTLES, PER BMP 67 AND SPC-1, SHEET SW5
-  DIRECTIONAL FLOW ARROWS
-  WASH OUT AREA



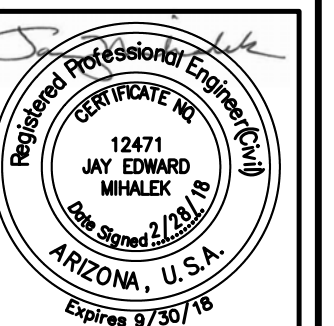
JMA ENGINEERING CORPORATION

JMA

531 E. Bethany Home Road, Garden Suite
Phoenix, Arizona 85012
Voice 602.248.0286
Fax 602.248.0976

SWPPP FINAL PLAN
ADELANTE HEALTHCARE GOODYEAR
13471 WEST CORNERSTONE BOULEVARD, GOODYEAR, AZ

Manager	FDM
Checked	JM
Job No.	1604.2



1988 - 2018
Celebrating 30 Years

SHEET
SW4
4 OF 5

TWO WORKING DAYS BEFORE YOU DIG
CALL FOR THE BLUE STAKES
602-263-1100
BLUE STAKE CENTER

2017-4826-C1-013

HTE 17-8426