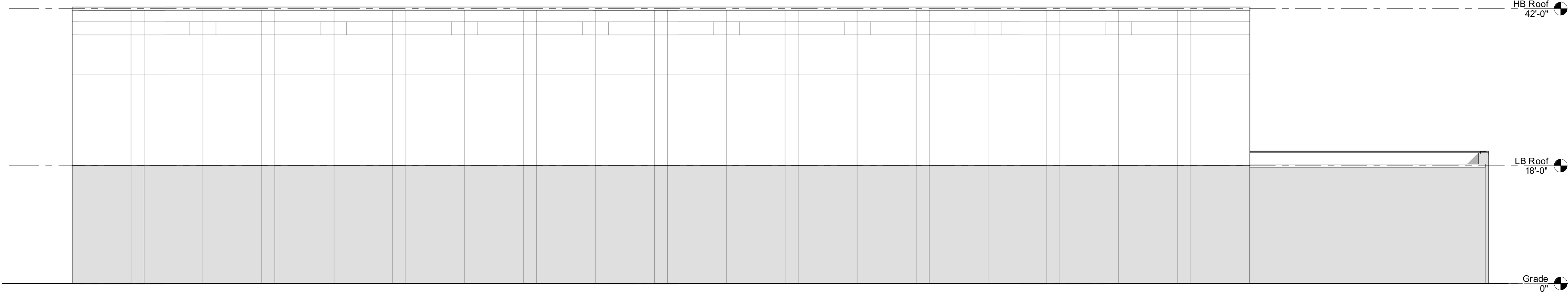


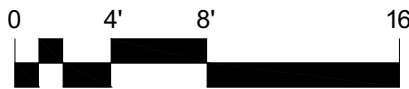
② WEST ELEVATION

1/8" = 1'-0"



① EAST ELEVATION

1/8" = 1'-0"



ARCHITECTURAL EXPRESSIONS, LLP
113 ILLINI DRIVE, FORSYTH, IL 62535
PHONE: 217-877-4620 FAX: 217-877-4625
www.aexllp.com

DATE: _____
LIC. EXP.: _____

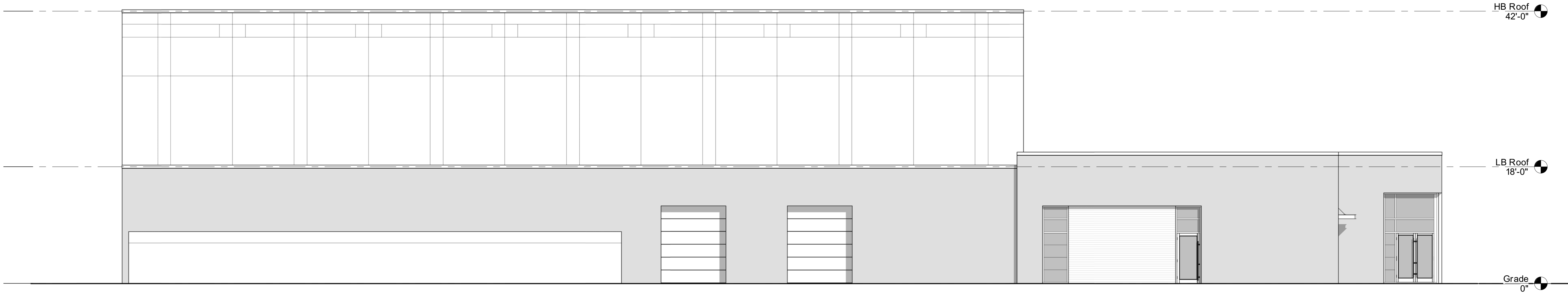
EXTERIOR ELEVATIONS
ARIZONA ISOTOPES
NEW CYCLOTRON FACILITY
GOODYEAR, ARIZONA

No.	Description	Date

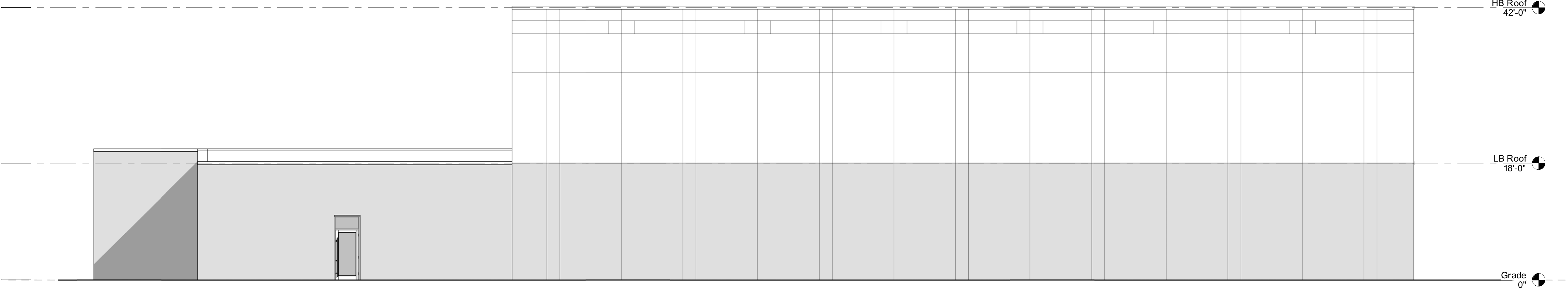
CONCEPTUAL

Project Number	5837
Date	11/06/18
Drawn By	AEX
Checked By	AEX

A2



1 NORTH ELEVATION
1/8" = 1'-0"



2 SOUTH ELEVATION
1/8" = 1'-0"



ARCHITECTURAL EXPRESSIONS, LLP
113 ILLINI DRIVE, FORSYTH, IL 62535
PHONE: 217-877-4620 FAX: 217-877-4625
www.aexllp.com

DATE: _____
LIC. EXP.: _____

EXTERIOR ELEVATIONS
ARIZONA ISOTOPES
NEW CYCLOTRON FACILITY
GOODYEAR, ARIZONA

No.	Description	Date

CONCEPTUAL

Project Number	5837
Date	11/06/18
Drawn By	AEX
Checked By	AEX

A3