

**ZONING EXHIBIT ZONE R1-6 LEGAL DESCRIPTION  
PARCEL NO. 1 OF INSTRUMENT NUMBER 2013-0821320, M.C.R.**

A PARCEL OF LAND SITUATED IN A PORTION OF THE WEST HALF SECTION 23, TOWNSHIP 2 NORTH, RANGE 2 WEST, OF THE GILA AND SALT RIVER MERIDIAN, MARICOPA COUNTY ARIZONA, MORE PARTICULARLY DESCRIBED AS FOLLOWS:

COMMENCING AT THE NORTHWEST CORNER OF SAID SECTION 23, MONUMENTED BY A 3 INCH MARICOPA COUNTY DEPARTMENT OF TRANSPORTATION BRASS CAP, FROM WHICH THE WEST QUARTER CORNER OF SAID SECTION 23, MONUMENTED BY A 1/2 INCH REBAR WITH ALUMINUM CAP, BEARS AS A BASIS OF BEARINGS, SOUTH 00 DEGREES 18 MINUTES 20 SECONDS WEST, A DISTANCE OF 2641.76 FEET;

THENCE SOUTH 00 DEGREES 18 MINUTES 20 SECONDS WEST, ALONG THE WESTERLY LINE OF THE NORTHWEST QUARTER OF SAID SECTION 23, A DISTANCE OF 2399.75 FEET, TO THE TRUE POINT OF BEGINNING;

THENCE SOUTH 89 DEGREES 41 MINUTES 39 SECONDS EAST, A DISTANCE OF 215.03 FEET, TO THE BEGINNING OF A NON-TANGENT CURVE, CONCAVE NORTHEASTERLY, WHOSE RADIUS POINT BEARS SOUTH 87 DEGREES 43 MINUTES 53 SECONDS EAST, A DISTANCE OF 55.00 FEET;

THENCE SOUTHEASTERLY, ALONG SAID CURVE TO THE LEFT, THROUGH A CENTRAL ANGLE OF 82 DEGREES 49 MINUTES 55 SECONDS, AN ARC DISTANCE OF 79.51 FEET, TO A POINT OF NON-TANGENCY;

THENCE SOUTH 00 DEGREES 18 MINUTES 20 SECONDS WEST, A DISTANCE OF 155.75 FEET;

THENCE SOUTH 89 DEGREES 42 MINUTES 33 SECONDS EAST, A DISTANCE OF 215.05 FEET, TO THE BEGINNING OF A TANGENT CURVE, CONCAVE NORTHWESTERLY, WHOSE RADIUS BEARS NORTH 00 DEGREES 17 MINUTES 27 SECONDS EAST, A DISTANCE OF 970.00 FEET;

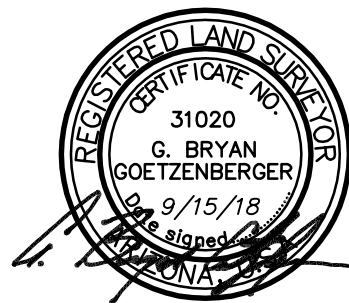
THENCE NORTHEASTERLY ALONG SAID CURVE TO THE LEFT, THROUGH A CENTRAL ANGLE OF 46 DEGREES 08 MINUTES 53 SECONDS, AN ARC DISTANCE OF 781.27 FEET TO A POINT OF NON-TANGENCY;

THENCE NORTH 02 DEGREES 28 MINUTES 54 SECONDS WEST, A DISTANCE OF 27.77 FEET;

THENCE NORTH 41 DEGREES 29 MINUTES 05 SECONDS EAST, A DISTANCE OF 50.00 FEET;

THENCE NORTH 85 DEGREES 27 MINUTES 03 SECONDS EAST, A DISTANCE OF 27.77 FEET;

CONTINUED ON PAGE 2



JOB NO.: 180922  
SECTION: 23  
TOWNSHIP: 2 NORTH  
RANGE: 2 WEST  
DATE: SEPTEMBER 15, 2018  
SHEET 1 OF 3



**STATEWIDE SERVICE IN ARIZONA**  
[www.alliancelandsurveying.com](http://www.alliancelandsurveying.com)

7900 N. 70th AVENUE TEL (623) 972-2200  
SUITE 104 FAX (623) 972-1616  
GLENDALE, AZ 85303

**ZONING EXHIBIT ZONE R1-6 LEGAL DESCRIPTION  
PARCEL NO. 1 OF INSTRUMENT NUMBER 2013-0821320, M.C.R.**

THENCE SOUTH 51 DEGREES 10 MINUTES 25 SECONDS EAST, A DISTANCE OF 30.00 FEET TO THE BEGINNING OF A NON-TANGENT CURVE, CONCAVE NORTHWESTERLY, WHOSE RADIUS POINT BEARS NORTH 51 DEGREES 10 MINUTES 25 SECONDS WEST, A DISTANCE OF 1000.00 FEET;

THENCE SOUTHWESTERLY ALONG SAID CURVE TO THE RIGHT, THROUGH A CENTRAL ANGLE OF 00 DEGREES 09 MINUTES 18 SECONDS, AN ARC DISTANCE OF 2.71 FEET TO A POINT OF NON-TANGENCY;

THENCE SOUTH 51 DEGREES 01 MINUTES 07 SECONDS EAST, A DISTANCE OF 30.00 FEET;

THENCE SOUTH 04 DEGREES 29 MINUTES 20 SECONDS EAST, A DISTANCE OF 28.76 FEET;

THENCE SOUTH 48 DEGREES 30 MINUTES 55 SECONDS EAST, A DISTANCE OF 24.16 FEET TO THE BEGINNING OF A TANGENT CURVE, CONCAVE SOUTHWESTERLY, WHOSE RADIUS POINT BEARS SOUTH 41 DEGREES 29 MINUTES 05 SECONDS WEST, A DISTANCE OF 825.00 FEET;

THENCE SOUTHEASTERLY ALONG SAID CURVE TO THE RIGHT, THROUGH A CENTRAL ANGLE OF 06 DEGREES 52 MINUTES 09 SECONDS, AN ARC DISTANCE OF 98.91 FEET TO A POINT OF TANGENCY;

THENCE SOUTH 41 DEGREES 38 MINUTES 46 SECONDS EAST, A DISTANCE OF 420.02 FEET;

THENCE SOUTH 86 DEGREES 38 MINUTES 46 SECONDS EAST, A DISTANCE OF 16.97 FEET;

THENCE SOUTH 41 DEGREES 38 MINUTES 46 SECONDS EAST, A DISTANCE OF 50.00 FEET;

THENCE SOUTH 03 DEGREES 21 MINUTES 14 SECONDS WEST, A DISTANCE OF 16.97 FEET;

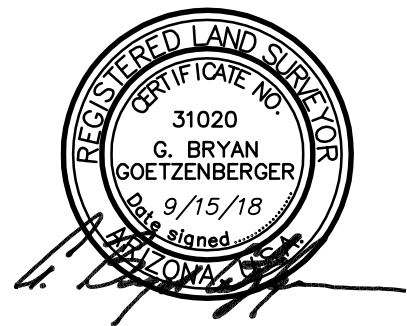
THENCE SOUTH 41 DEGREES 38 MINUTES 46 SECONDS EAST, A DISTANCE OF 258.00 FEET;

THENCE SOUTH 86 DEGREES 38 MINUTES 46 SECONDS EAST, A DISTANCE OF 16.97 FEET;

THENCE SOUTH 41 DEGREES 38 MINUTES 46 SECONDS EAST, A DISTANCE OF 50.00 FEET;

THENCE SOUTH 03 DEGREES 21 MINUTES 14 SECONDS WEST, A DISTANCE OF 16.97 FEET;

CONTINUED ON PAGE 3



JOB NO.: 180922  
SECTION: 23  
TOWNSHIP: 2 NORTH  
RANGE: 2 WEST  
DATE: SEPTEMBER 15, 2018  
SHEET 2 OF 3



**STATEWIDE SERVICE IN ARIZONA**  
[www.alliancelandsurveying.com](http://www.alliancelandsurveying.com)

7900 N. 70th AVENUE TEL (623) 972-2200  
SUITE 104 FAX (623) 972-1616  
GLENDALE, AZ 85303

**ZONING EXHIBIT ZONE R1-6 LEGAL DESCRIPTION  
PARCEL NO. 1 OF INSTRUMENT NUMBER 2013-0821320, M.C.R.**

THENCE SOUTH 48 DEGREES 21 MINUTES 14 SECONDS WEST, A DISTANCE OF 50.00 FEET;

THENCE NORTH 86 DEGREES 38 MINUTES 46 SECONDS WEST, A DISTANCE OF 16.97 FEET;

THENCE SOUTH 48 DEGREES 21 MINUTES 14 SECONDS WEST, A DISTANCE OF 99.66 FEET TO THE BEGINNING OF A TANGENT CURVE, CONCAVE NORTHWESTERLY, WHOSE RADIUS POINT BEARS NORTH 41 DEGREES 38 MINUTES 46 SECONDS WEST, A DISTANCE OF 1689.00 FEET;

THENCE SOUTHWESTERLY ALONG SAID CURVE TO THE RIGHT, THROUGH A CENTRAL ANGLE OF 41 DEGREES 57 MINUTES 06 SECONDS, AN ARC DISTANCE OF 1236.68 FEET TO A POINT OF TANGENCY;

THENCE NORTH 89 DEGREES 41 MINUTES 40 SECONDS WEST, A DISTANCE OF 220.98 FEET;

THENCE SOUTH 00 DEGREES 18 MINUTES 19 SECONDS WEST, A DISTANCE OF 76.65 FEET;

THENCE SOUTH 04 DEGREES 40 MINUTES 11 SECONDS EAST, A DISTANCE OF 288.25 FEET;

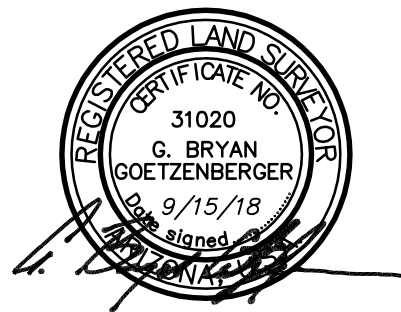
THENCE SOUTH 00 DEGREES 00 MINUTES 13 SECONDS WEST, A DISTANCE OF 194.19 FEET;

THENCE SOUTH 00 DEGREES 00 MINUTES 15 SECONDS WEST, A DISTANCE OF 20.99 FEET;

THENCE NORTH 89 DEGREES 59 MINUTES 45 SECONDS WEST, A DISTANCE OF 471.08 FEET TO A POINT ON THE WESTERLY LINE OF THE SOUTHWEST QUARTER OF SAID SECTION 23;

THENCE NORTH 00 DEGREES 18 MINUTES 10 SECONDS EAST, ALONG SAID WESTERLY LINE, A DISTANCE OF 1485.35 FEET TO SAID WEST QUARTER CORNER OF SAID SECTION 23;

THENCE NORTH 00 DEGREES 18 MINUTES 20 SECONDS EAST, ALONG THE WESTERLY LINE OF THE NORTHWEST QUARTER OF SAID SECTION 23, A DISTANCE OF 242.01 FEET TO THE TRUE POINT OF BEGINNING.



JOB NO.: 180922  
SECTION: 23  
TOWNSHIP: 2 NORTH  
RANGE: 2 WEST  
DATE: SEPTEMBER 15, 2018  
SHEET 3 OF 3



**STATEWIDE SERVICE IN ARIZONA**  
[www.alliancelandsurveying.com](http://www.alliancelandsurveying.com)

7900 N. 70th AVENUE TEL (623) 972-2200  
SUITE 104 FAX (623) 972-1616  
GLENDALE, AZ 85303