

FY 18-19 Pavement Management Projects

August 27 2018

Agenda



- Recommendation
- Pavement management background
- Photographs of past projects
- Maps of upcoming work

Recommendation



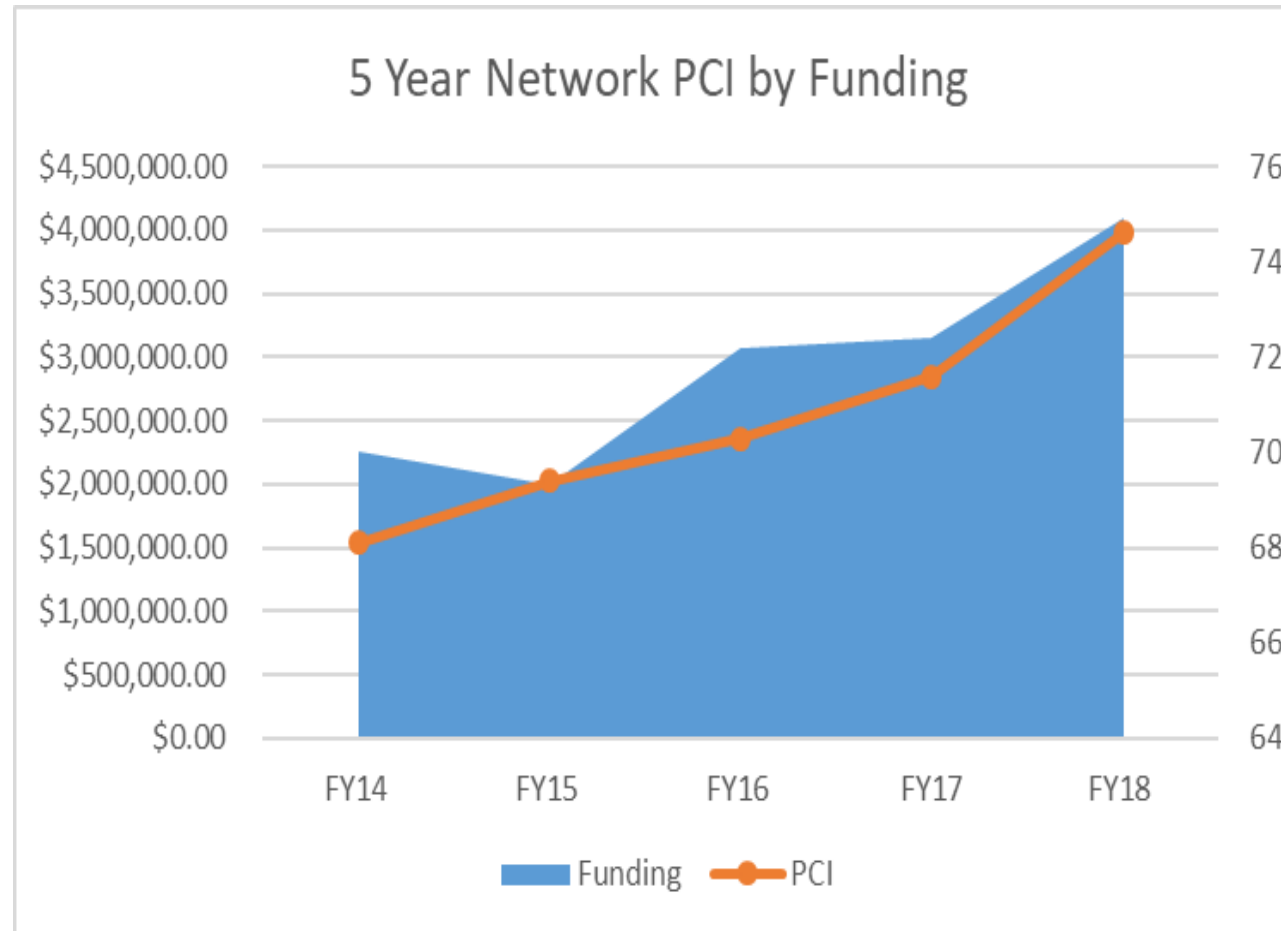
- Approve a budgeted expenditure of up to \$3,250,000 for the 2018-19 Pavement Management Projects at various locations throughout the City.

Pavement Management Prioritization



- Roadway classification
- Pavement condition
- Grouped treatments
- Development and utility considerations

Pavement Management 5 Year Results



2014 and 2018 Pavement Comparison



Functional Class	PCI Targets	Pavement Condition			
		Average		%>X	
		2014	2018	2014	2018
Arterial	80 (with 90 percent > 70)	70.4	77.6	57.8	74.4
Collector	75 (with 90 percent > 65)	70.1	77.2	70.2	84.6
Industrial	70 (with 90 percent > 55)	55	75.4	40.0	94.7
Residential	70 (with 90 percent > 55)	66.6	73.7	84.0	85.9
Rural	65 (with 90 percent > 50)	67.2	63.0	78.1	71.4
2014 Network Average PCI		68.1			
2018 Network Average PCI		74.5			

Green Shading = At or above target value.
Yellow shading = Within 5 points of target value.

Hot In Place Recycle: Elliot Road Before and After Treatment



Double Fractured Aggregate Surface Treatment (FAST):

Litchfield Road Before and After Treatment



Low Volume Cape Seal: Palm Valley III Before and After Treatment



2018-2019 Pavement Management

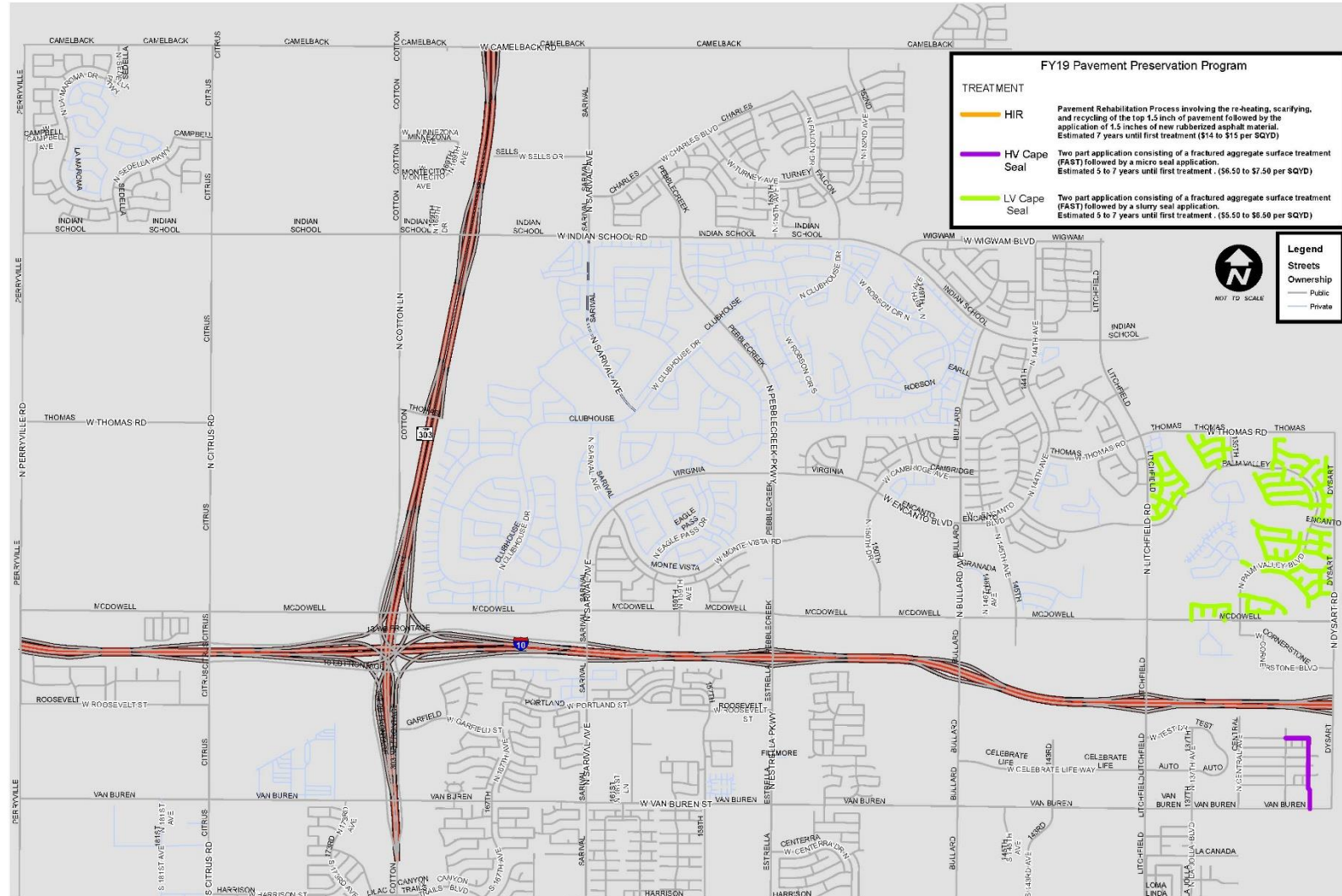


Palm Valley Phase I

- The Mirage
- Desert Greens
- The Horizons
- The Oasis
- The Meadows
- The Estates
- Las Palmas
- Paloma
- The Classics

North Subdivisions

- Manzanita Rd
- Via Villa St



2018-2019 Pavement Management

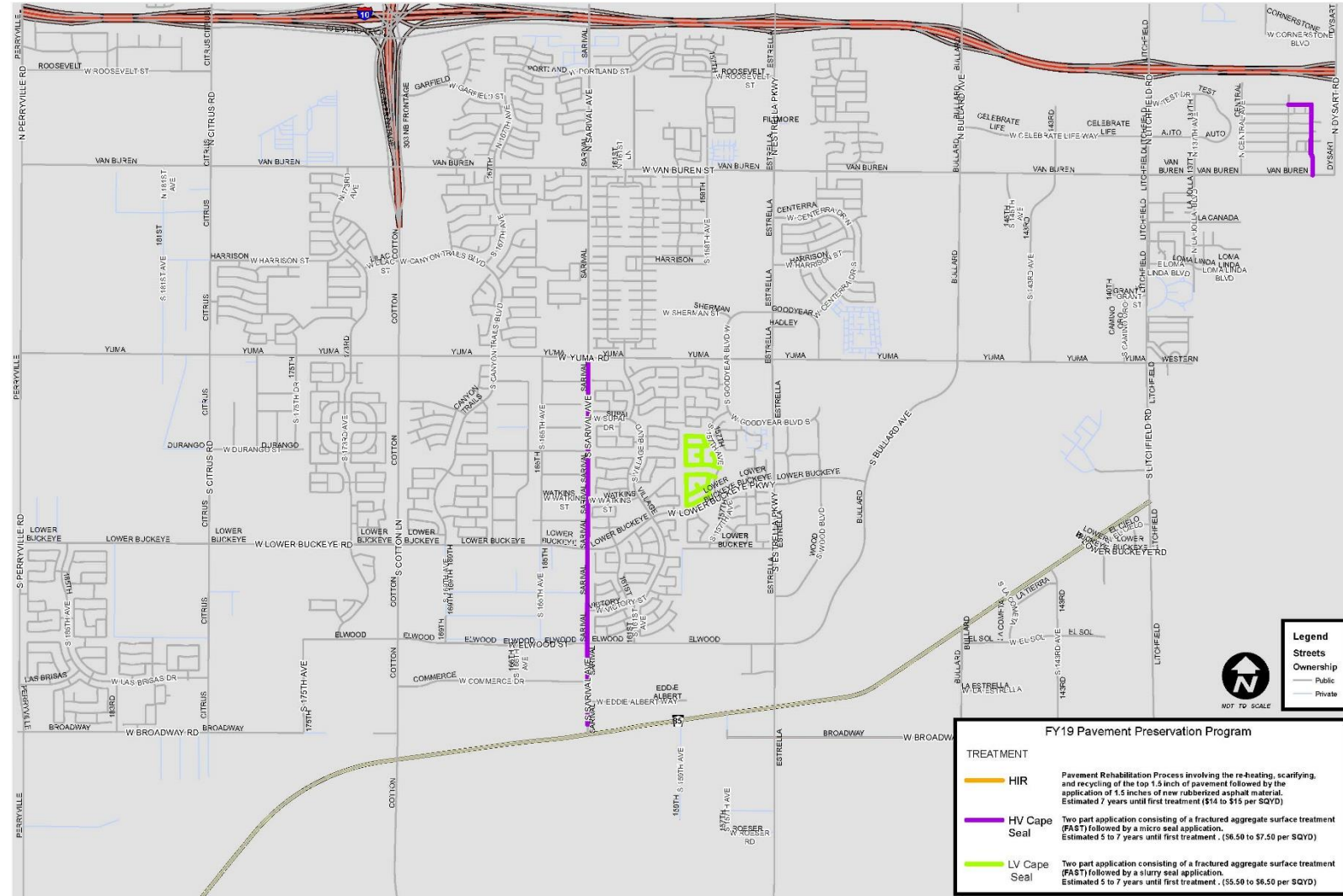


Estrella Vista

- Parcels C & G
- Parcel 4

Sarival Avenue

- Yuma Road to MC-85



2018-2019 Pavement Management

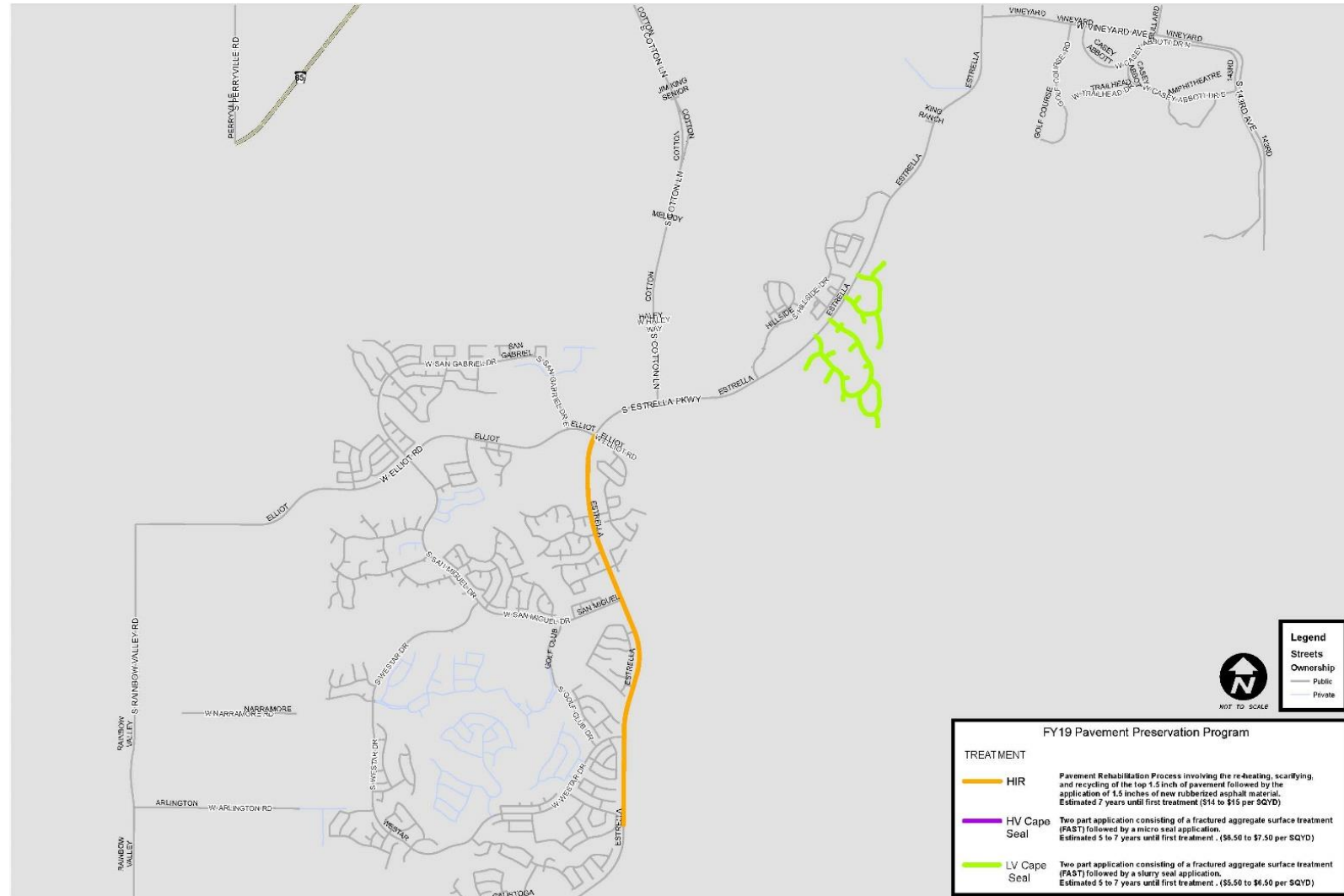


Estrella Mountain Ranch

- The Trails
- The Summit

Estrella Pkwy

- Elliot Road to Estrella Foothills High School



Recommendation



- Approve a budgeted expenditure of up to \$3,250,000 for the 2018-19 Pavement Management Projects at various locations throughout the City.

Questions/Discussion