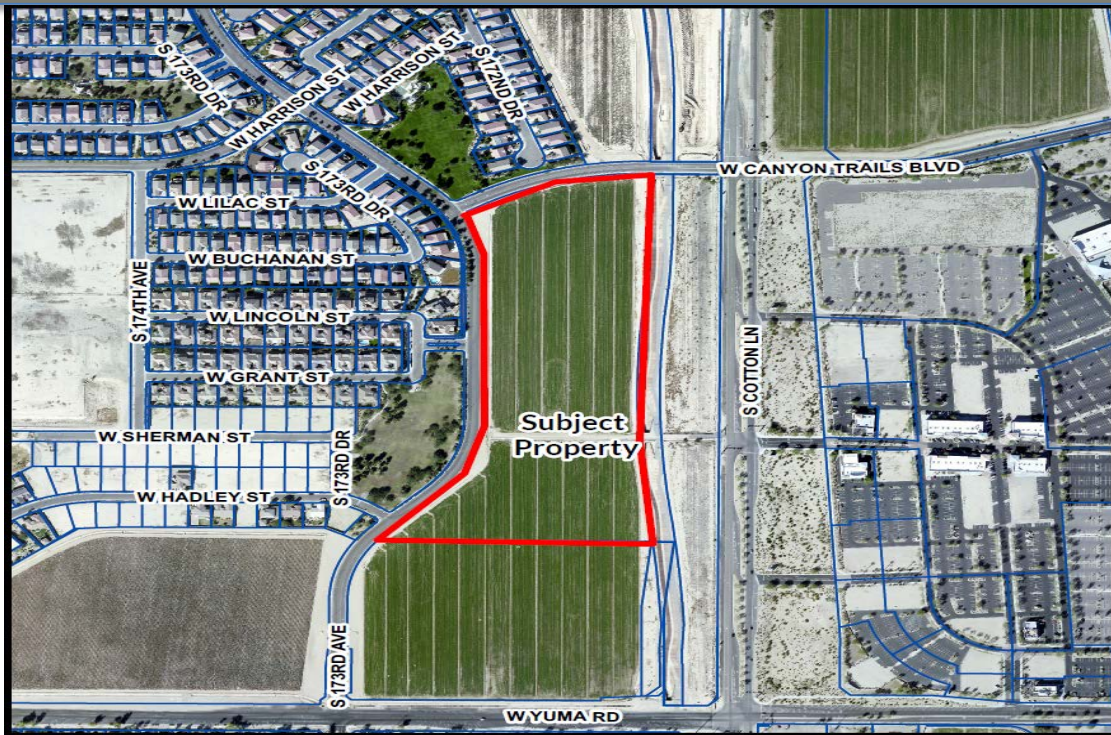


# CRESTWOOD AT CANYON TRAILS PRELIMINARY PLAT

# Aerial Photo



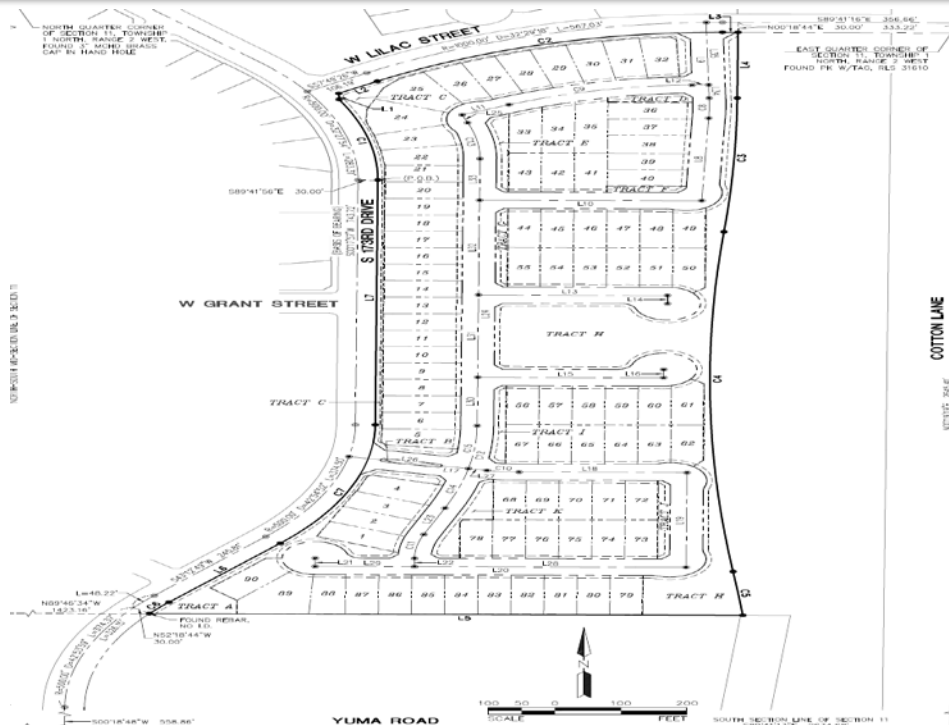
## CRESTWOOD AT CANYON TRAILS



# Preliminary Plat



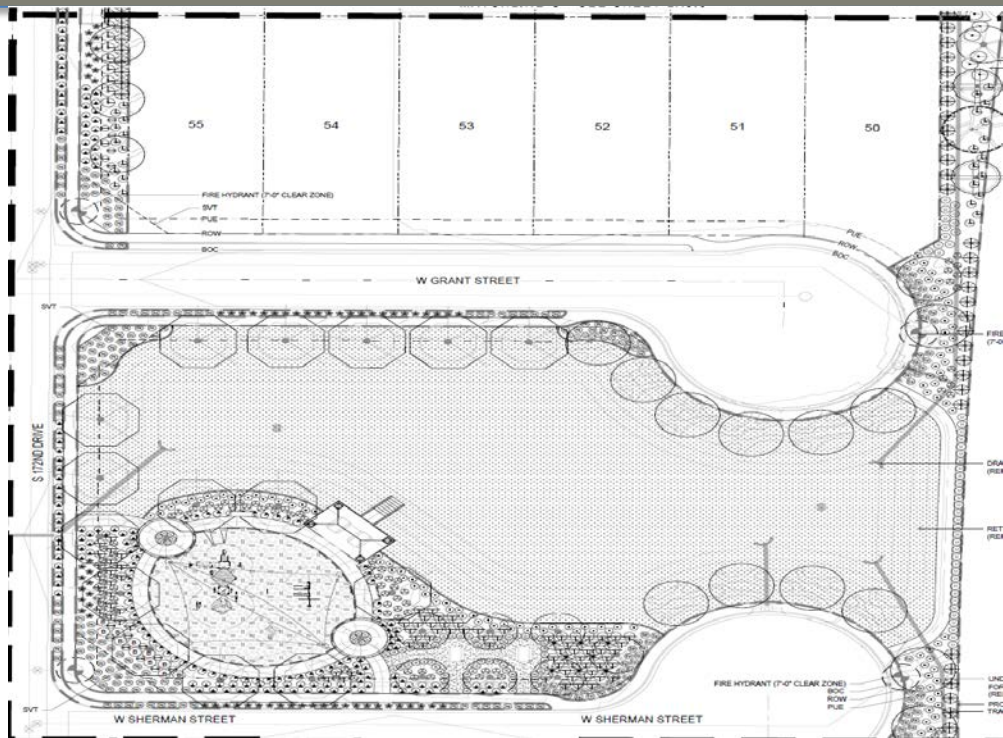
## CRESTWOOD AT CANYON TRAILS



# Central Open Space & Rec Area



## CRESTWOOD AT CANYON TRAILS





# Noise Wall Locations



## CRESTWOOD AT CANYON TRAILS



0 125 250  
FEET

### LEGEND

Noise Receiver

ADOT Potentially Recommended Wall

Developer Wall (6 feet high)

Developer Wall (8 feet high)

Figure 1

Crestwood Developer Project

# Recommendation



## CRESTWOOD AT CANYON TRAILS

- Preliminary plat is:
  - Compatible with the area
  - Consistent with the Subdivision Regulations
- Staff and the Planning & Zoning Commission recommend approval of the preliminary plat