

DEDICATION
STATE OF ARIZONA }
COUNTY OF MARICOPA } SS

KNOW ALL MEN BY THESE PRESENTS:

THAT NNP III-EMR 3, LLC, A DELAWARE LIMITED LIABILITY COMPANY AND ESTRELLA JOINT COMMITTEE, INC., AN ARIZONA NON-PROFIT CORPORATION, AS OWNERS, HEREBY PUBLISHES THIS MAP OF DEDICATION FOR "ESTRELLA-HILLSIDE DRIVE & SENDERO DRIVE MAP OF DEDICATION", OVER A PORTION OF SECTION 1, TOWNSHIP 1 SOUTH, RANGE 2 WEST AND SECTION 12, TOWNSHIP 1 SOUTH, RANGE 2 WEST OF THE GILA AND SALT RIVER MERIDIAN, MARICOPA COUNTY, ARIZONA, AS SHOWN HEREON AND HEREBY DECLARES THAT SAID MAP OF DEDICATION SETS FORTH THE LOCATION AND GIVES DIMENSIONS OF THE RIGHTS-OF-WAY AND EASEMENTS PERTAINING TO HILLSIDE DRIVE AND SENDERO DRIVE, AND THAT THE STREETS SHALL BE KNOWN BY THE NAME GIVEN ON THIS MAP OF DEDICATION, OWNERS HEREBY DEDICATE, GRANT, AND CONVEY TO THE CITY OF GOODYEAR THE PUBLIC STREETS, IN FEE, SHOWN ON SAID MAP OF DEDICATION, AND THE CITY OF GOODYEAR BY IT'S APPROVAL BELOW HEREBY ACCEPTS FOR USE AS PUBLIC STREET, THE RIGHTS-OF-WAY AS SHOWN ON THIS MAP OF DEDICATION.

THAT NNP III-EMR 3, LLC, A DELAWARE LIMITED LIABILITY COMPANY AND ESTRELLA JOINT COMMITTEE, INC., AN ARIZONA NON-PROFIT CORPORATION, AS OWNERS, HEREBY DEDICATES TO THE CITY OF GOODYEAR FOR USE BY THE CITY AND ITS PERMITEES EXCLUSIVE PUBLIC UTILITY EASEMENTS ("PUE"), INCLUSIVE, AS SHOWN ON THIS MAP OF DEDICATION. SUCH PUBLIC UTILITY EASEMENTS ARE FOR THE PURPOSES OF INSTALLING, OPERATING, MAINTAINING, REPLACING, AND OR REPAIRING PUBLIC UTILITIES, IN, OVER, ABOVE, AND UNDER THE PUBLIC UTILITY EASEMENT AREAS AS SHOWN ON THIS MAP OF DEDICATION. NO STRUCTURES OR IMPROVEMENTS MAY BE CONSTRUCTED ON, IN, OVER OR UNDER THE PUBLIC UTILITY AREAS IF SUCH IMPROVEMENTS WILL INTERFERE WITH THE USE OF THE EASEMENT AREAS FOR PUBLIC UTILITY FACILITIES, EXCEPT THAT ROADWAYS, SIDEWALKS, AND LANDSCAPING AS APPROVED BY THE CITY MAY BE CONSTRUCTED OR INSTALLED ON OR OVER SUCH PUBLIC UTILITY EASEMENT AREAS. PUBLIC UTILITY PROVIDERS SHALL BE AND REMAIN RESPONSIBLE FOR THE INSTALLATION, OPERATION, MAINTENANCE AND REPAIR OF THEIR UTILITY FACILITIES, AND SHALL BE RESPONSIBLE FOR THE REPLACEMENT OF ANY IMPROVEMENTS INSTALLED AND/OR CONSTRUCTED WITHIN THE PUBLIC UTILITY EASEMENT AREAS, INCLUDING, BUT NOT LIMITED TO, LANDSCAPING IMPROVEMENTS AND STREETS, DAMAGED DURING THE INSTALLATION AND/OR REPAIR OF THEIR UTILITY FACILITIES.

THAT NNP III-EMR 3, LLC, A DELAWARE LIMITED LIABILITY COMPANY, AND ESTRELLA JOINT COMMITTEE, INC., AN ARIZONA NON-PROFIT CORPORATION, AS OWNERS, AND ITS SUCCESSORS OR ASSIGNS HEREBY RESERVES THE RIGHT TO CONSTRUCT, REPAIR, REPLACE AND MAINTAIN NON-POTABLE OR IRRIGATION PIPELINES WITHIN THE PUBLIC UTILITY EASEMENTS AND STREETS FOR THE BENEFIT OF THE OWNERS, ESTRELLA COMMUNITY ASSOCIATION, THE VILLAGES AT ESTRELLA MOUNTAIN RANCH COMMUNITY ASSOCIATION AND THEIR MEMBERS. SAID RIGHTS SHALL BE SUBJECT TO TERMS OF ANY FUTURE AGREEMENT BETWEEN OWNER AND CITY CONCERNING SAID PUBLIC UTILITY EASEMENTS AND STREETS. CONSTRUCTION, REPAIR, REPLACEMENT, AND MAINTENANCE OF NON-POTABLE OR IRRIGATION PIPELINES SHALL REQUIRE APPROVED CONSTRUCTION PLANS AND PERMITS FROM THE CITY OF GOODYEAR, NOT TO BE UNREASONABLY WITHHELD.

IN CONSIDERATION OF THE CITY'S AGREEMENT TO ALLOW THE CONSTRUCTION OF A MEDIAN AND INSTALLATION OF LANDSCAPING WITHIN THE STREET BEING DEDICATED HEREIN, THE VILLAGES AT ESTRELLA MOUNTAIN RANCH COMMUNITY ASSOCIATION HEREBY EXPRESSLY AGREES THAT IT SHALL, AT ITS SOLE COST, MAINTAIN AND REPLACE LANDSCAPING INSTALLED WITHIN MEDIANS CONSTRUCTED WITHIN THE STREET BEING DEDICATED HEREIN, INCLUDING THE PROVIDING OF ALL WATER NEEDED FOR THE MAINTENANCE OF SUCH LANDSCAPING. THE VILLAGES AT ESTRELLA MOUNTAIN RANCH COMMUNITY ASSOCIATION SHALL OBTAIN ALL PERMITS AS MAY BE REQUIRED BY THE CITY FOR UNDERTAKING WORK WITHIN CITY RIGHT-OF-WAY. THE VILLAGES AT ESTRELLA MOUNTAIN RANCH COMMUNITY ASSOCIATION EXPRESSLY AGREES TO INDEMNIFY AND HOLD HARMLESS THE CITY, ITS OFFICERS, ELECTED OFFICIALS, EMPLOYEES AND AGENTS FOR ALL CLAIMS ARISING FROM OR ALLEGED TO HAVE ARISEN FROM THE LANDSCAPING, INCLUDING THE FAILURE TO MAINTAIN SUCH LANDSCAPING, WITHIN THE MEDIAN. EXCEPT AS PROVIDED HEREIN, THE VILLAGES AT ESTRELLA MOUNTAIN RANCH COMMUNITY ASSOCIATION SHALL BE RESPONSIBLE FOR TAKING ACTION TO REMEDY ANY UNSAFE CONDITION IDENTIFIED BY THE CITY WITHIN THREE (3) BUSINESS DAYS AFTER BEING NOTIFIED OF SUCH UNSAFE CONDITION BY THE CITY. THE CITY SHALL BE ENTITLED TO REMEDY ANY UNSAFE CONDITION RESULTING FROM THE LANDSCAPING WITHIN THE MEDIAN IF THE CITY ENGINEER OR HIS/HER DESIGNEE IN HIS/HER REASONABLE DISCRETION DETERMINES THAT THE SAFETY OF THE PUBLIC REQUIRES THAT THE UNSAFE CONDITION BE REMEDIATED BEFORE THREE (3) BUSINESS DAYS OF ITS DISCOVERY; AND THE CITY SHALL BE ENTITLED TO REMEDY ANY UNSAFE CONDITION RESULTING FROM THE FAILURE OF THE VILLAGES AT ESTRELLA MOUNTAIN RANCH COMMUNITY ASSOCIATION TO REMEDY THE UNSAFE CONDITION WITHIN THREE (3) BUSINESS DAYS OF BEING NOTIFIED OF SUCH UNSAFE CONDITION BY THE CITY. IN THE EVENT THE CITY EXERCISES ITS RIGHT TO REMEDY UNSAFE CONDITIONS AS PROVIDED HEREIN, THE VILLAGES AT ESTRELLA MOUNTAIN RANCH COMMUNITY ASSOCIATION SHALL REIMBURSE THE CITY FOR THE COSTS INCURRED IN DOING SO. SHOULD THE HOA FAIL TO MAINTAIN THE LANDSCAPING INSTALLED WITHIN THE MEDIANS AS PROVIDED HEREIN, THE CITY SHALL BE ENTITLED TO REMOVE THE LANDSCAPING AND OR REMOVE THE LANDSCAPING AND MEDIAN, AND THE VILLAGES AT ESTRELLA MOUNTAIN RANCH COMMUNITY ASSOCIATION SHALL REIMBURSE THE CITY FOR THE COSTS INCURRED IN SUCH REMOVAL. IN ANY DISPUTE UNDER THIS AGREEMENT, THE SUCCESSFUL PARTY SHALL BE ENTITLED TO COLLECT ITS REASONABLE ATTORNEYS' FEES, AND OTHER COSTS AS DETERMINED BY A COURT OF COMPETENT JURISDICTION.

THAT NNP III-EMR 3, LLC, A DELAWARE LIMITED LIABILITY COMPANY, AND ESTRELLA JOINT COMMITTEE, INC, AN ARIZONA NON-PROFIT CORPORATION, AS OWNERS, AND ITS SUCCESSORS OR ASSIGNS HEREBY RESERVES THE RIGHT TO CONSTRUCT, REPAIR, REPLACE AND MAINTAIN ENHANCED PAVEMENT WITHIN THE ENHANCED PAVEMENT EASEMENT LIMITS DENOTED OVER THE PUBLIC STREETS. THE LIMITS OF THE ENHANCED PAVEMENT WITHIN THE PUBLIC STREET SHALL BE LIMITED TO BETWEEN THE CURBLINES WITHIN THE LIMITS OF THE EASEMENT. THE VILLAGES AT ESTRELLA MOUNTAIN RANCH COMMUNITY ASSOCIATION AND ITS SUCCESSORS OR ASSIGNS ARE FULLY RESPONSIBLE FOR THE REPAIR, REPLACEMENT AND MAINTENANCE OF THE ENHANCED PAVEMENT AND HAS 60 CALENDAR DAYS TO RESPOND TO ANY REQUESTS FROM THE CITY OF GOODYEAR TO REPAIR, REPLACE OR MAINTAIN THE ENHANCED PAVEMENT.

IN WITNESS WHEREOF, NNP III-EMR 3, LLC, A DELAWARE LIMITED LIABILITY COMPANY, AND ESTRELLA JOINT COMMITTEE, INC., AN ARIZONA NON-PROFIT CORPORATION, AS OWNERS, HAS HEREUNTO CAUSED ITS NAME TO BE AFFIXED AND THE SAME TO BE ATTESTED BY THE SIGNATURE OF THE UNDERSIGNED OFFICER THEREUNTO DULY AUTHORIZED THIS ____ DAY OF _____, 2018.

NNP III-EMR 3, LLC, A DELAWARE LIMITED LIABILITY COMPANY

BY: _____

ITS: _____

ESTRELLA JOINT COMMITTEE, INC., AN ARIZONA NON-PROFIT CORPORATION

BY: _____

ITS: _____

ACKNOWLEDGMENT

STATE OF ARIZONA }
COUNTY OF MARICOPA } SS

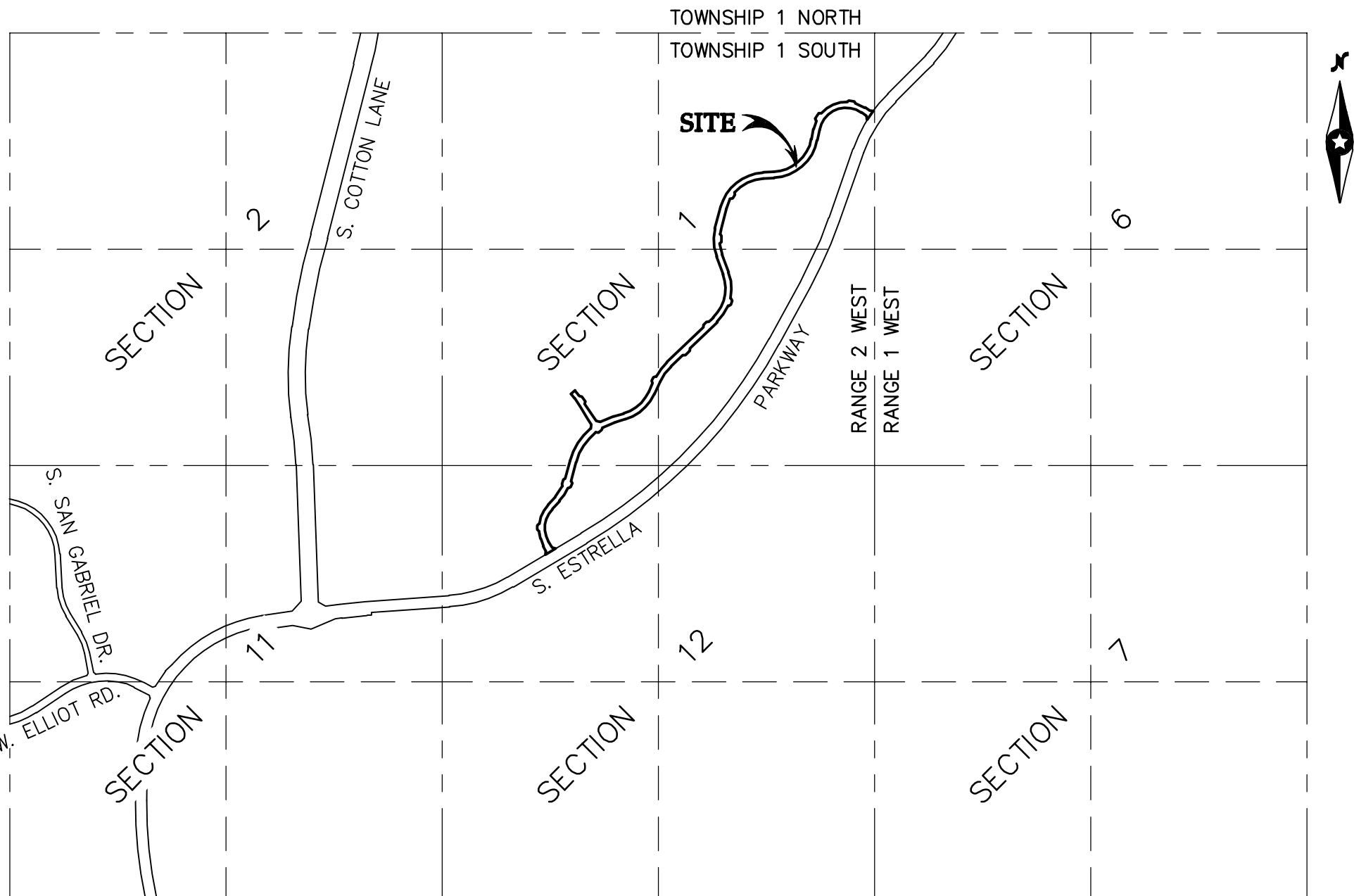
BEFORE ME THIS ____ DAY OF _____, 2018 _____
PERSONALLY APPEARED BEFORE ME, THE UNDERSIGNED NOTARY PUBLIC, WHO ACKNOWLEDGED HIMSELF/HERSELF TO BE THE _____ OF NNP III-EMR 3, LLC, A DELAWARE LIMITED LIABILITY COMPANY, AS OWNER, AND ACKNOWLEDGED THAT HE/SHE _____, AS _____ FOR NNP III-EMR 3, LLC, A DELAWARE LIMITED LIABILITY COMPANY, EXECUTED THIS INSTRUMENT FOR THE PURPOSES HEREIN CONTAINED.

IN WITNESS WHEREOF, I HEREUNTO SET MY HAND AND OFFICIAL SEAL.

NOTARY PUBLIC _____ DATE _____
MY COMMISSION EXPIRES _____

ESTRELLA - HILLSIDE DRIVE & SENDERO DRIVE MAP OF DEDICATION

BEING A PORTION OF LAND LYING WITHIN THE EAST AND SOUTH HALF OF SECTION 1, TOWNSHIP 1 SOUTH, RANGE 2 WEST AND THE NORTHWEST QUARTER OF SECTION 12, TOWNSHIP 1 SOUTH, RANGE 2 WEST OF THE GILA AND SALT RIVER MERIDIAN, MARICOPA COUNTY, ARIZONA



VICINITY MAP
NTS

NOTES

- NO STRUCTURES OF ANY KIND SHALL BE CONSTRUCTED OR PLACED WITHIN OR OVER THE UTILITY EASEMENTS EXCEPT: UTILITIES, ASPHALT PAVING, GRASS, AND WOOD, WIRE OR REMOVABLE SECTION TYPE FENCING. THE CITY OF GOODYEAR SHALL NOT BE REQUIRED TO REPLACE OR PROVIDE REIMBURSEMENT FOR THE COST OF REPLACING ANY OBSTRUCTIONS, PAVING OR PLANTING THAT IS REMOVED DURING THE COURSE OF MAINTAINING, CONSTRUCTING OR RECONSTRUCTING UTILITY FACILITIES.
- NO STRUCTURE OF ANY KIND SHALL BE CONSTRUCTED OR ANY VEGETATION BE PLANTED NOR BE ALLOWED TO GROW WITHIN, ON OR OVER THE DRAINAGE EASEMENT, WHICH WOULD OBSTRUCT OR DIVERT THE FLOW OF STORM WATER. THE CITY MAY, IF IT SO DESIRES, CONSTRUCT OR MAINTAIN DRAINAGE FACILITIES ON OR UNDER THE LAND OF THE EASEMENT.
- ALL NEW OR RELOCATED UTILITIES WILL BE PLACED UNDERGROUND, EXCEPT 69 KV OR LARGER POWER LINES.
- ALL LOT CORNERS SHALL BE MONUMENTED WITH ½" REBAR WITH CAP, TAG OR OTHER MONUMENTATION AS DESCRIBED BEARING THE REGISTRATION NUMBER OF THE SURVEYOR RESPONSIBLE FOR THEIR PLACEMENT.
- STRUCTURES AND LANDSCAPING WITHIN VISIBILITY TRIANGLE WILL BE LIMITED TO GROUND COVER, FLOWERS AND GRANITE LESS THAN 2- FEET (MATURE) IN HEIGHT AND/OR TREES WITH BRANCHES NOT LESS THAN 6- FEET ABOVE THE GROUND. TREES SHALL NOT BE PLACED LESS THAT 8- FEET APART.
- ALL LANDSCAPING SHALL BE MAINTAINED BY THE THE VILLAGES AT ESTRELLA MOUNTAIN RANCH COMMUNITY ASSOCIATION.

ACKNOWLEDGMENT

STATE OF ARIZONA }
COUNTY OF MARICOPA } SS

BEFORE ME THIS ____ DAY OF _____, 2018 _____
PERSONALLY APPEARED BEFORE ME, THE UNDERSIGNED NOTARY PUBLIC, WHO ACKNOWLEDGED HIMSELF/HERSELF TO BE THE _____ OF ESTRELLA JOINT COMMITTEE, INC., AN ARIZONA NON-PROFIT CORPORATION, AS OWNER, AND ACKNOWLEDGED THAT HE/SHE _____, AS _____ FOR ESTRELLA JOINT COMMITTEE INC, EXECUTED THIS INSTRUMENT FOR THE PURPOSES HEREIN CONTAINED.

IN WITNESS WHEREOF, I HEREUNTO SET MY HAND AND OFFICIAL SEAL.

NOTARY PUBLIC _____ DATE _____
MY COMMISSION EXPIRES _____

PROJECT OWNER

NNP III-EMR 3, LLC
5090 NORTH 40TH STREET, SUITE 210
PHOENIX, ARIZONA 85018
PHONE: (602) 468-0800
FAX: (602) 468-1633

LAND SURVEYOR

WESTWOOD PROFESSIONAL SERVICES
6909 EAST GREENWAY PARKWAY, SUITE 250
SCOTTSDALE, ARIZONA 85254
CONTACT: BENJAMIN J. BLIXT, RLS
PHONE: (480) 747-6558
FAX: (480) 367-8025

SHEET INDEX

FP01 COVER SHEET, DEDICATION, NOTES
FP02 LEGAL DESCRIPTION, LEGEND, & KEY MAP
FP03-FP05 MAP OF DEDICATION RIGHT OF WAY PLAN SHEETS
FP06-FP08 MAP OF DEDICATION EASEMENT PLAN SHEETS

BASIS OF BEARING

THE NORTH LINE OF THE NORTHEAST QUARTER OF SECTION 1, TOWNSHIP 1 SOUTH, RANGE 2 WEST, OF THE GILA AND SALT RIVER MERIDIAN, MARICOPA COUNTY, ARIZONA
BEARING: S89°46'22"W

GROSS AREA

563,374.95 S.F. (12.93 ACRES)

RATIFICATION & CONSENT

BY THIS RATIFICATION THE VILLAGES AT ESTRELLA MOUNTAIN RANCH COMMUNITY ASSOCIATION, ACKNOWLEDGED THE RESPONSIBILITIES DEDICATED HEREON.

NAME: _____

TITLE: _____ DATE: _____

ACKNOWLEDGMENT FOR RATIFICATION

STATE OF ARIZONA }
COUNTY OF MARICOPA } SS

BEFORE ME THIS ____ DAY OF _____, 2018 _____
PERSONALLY APPEARED BEFORE ME, THE UNDERSIGNED NOTARY PUBLIC, WHO ACKNOWLEDGED HIMSELF/HERSELF TO BE THE PERSON WHOSE NAME IS SUBSCRIBED TO THE INSTRUMENT WITHIN, AND WHO EXECUTED THE FOREGOING INSTRUMENT FOR THE PURPOSE THEREIN CONTAINED.

IN WITNESS WHEREOF, I HEREUNTO SET MY HAND AND OFFICIAL SEAL.

NOTARY PUBLIC _____ DATE _____

MY COMMISSION EXPIRES _____

APPROVAL

APPROVED BY THE MAYOR AND TOWN COUNCIL OF THE CITY OF GOODYEAR, ARIZONA
THIS ____ DAY OF _____, 2018

BY: _____ ATTEST: _____
MAYOR CITY CLERK

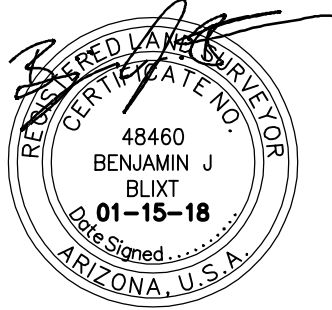
APPROVED BY THE CITY ENGINEER OF THE CITY OF GOODYEAR, ARIZONA
THIS ____ DAY OF _____, 2018

BY: _____ ATTEST: _____
CITY ENGINEER CITY CLERK

LAND SURVEY CERTIFICATION

I, BENJAMIN J. BLIXT, HEREBY CERTIFY THAT I AM A REGISTERED LAND SURVEYOR IN THE STATE OF ARIZONA; THAT THIS MAP OF DEDICATION, CONSISTING OF 8 SHEETS, CORRECTLY REPRESENTS A BOUNDARY SURVEY MADE UNDER MY SUPERVISION DURING THE MONTH OF JUNE, 2016 AND MEETS THE MINIMUM STANDARDS FOR AN ARIZONA LAND BOUNDARY SURVEY; THAT THE SURVEY IS TRUE AND COMPLETE AS SHOWN; THAT ALL MONUMENTS SHOWN ACTUALLY EXIST OR WILL BE SE AS SHOWN; THAT THEIR POSITIONS ARE CORRECTLY SHOWN AND THAT SAID MONUMENTS ARE SUFFICIENT TO ENABLE THE SURVEY TO BE RETRACED.

BY: BENJAMIN J. BLIXT, RLS
RLS# 48460
WESTWOOD PROFESSIONAL SERVICES
6909 EAST GREENWAY PARKWAY, SUITE 250
SCOTTSDALE, ARIZONA 85254
PHONE: (480) 747-6558



EXPIRES 09/30/20

Westwood

Westwood Professional Services, Inc.
6909 East Greenway Parkway, Suite 250
Scottsdale, AZ 85254

Phone (480) 747-6558
Fax (480) 376-8025

westwoodps.com

Designed: WPS
Checked: BJB
Drawn: KWD
Project Number: 000934200

Prepared for:

NNP III-EMR 3, LLC
5090 North 40th Street, Suite 210
Phoenix, Arizona 85018

Map of Dedication

Goodyear, Arizona

Cover Sheet

Date: 01/15/2018

Drawing No: FP01

Sheet No: 1 of 8

0009342M0DF01.dwg

LEGAL DESCRIPTION

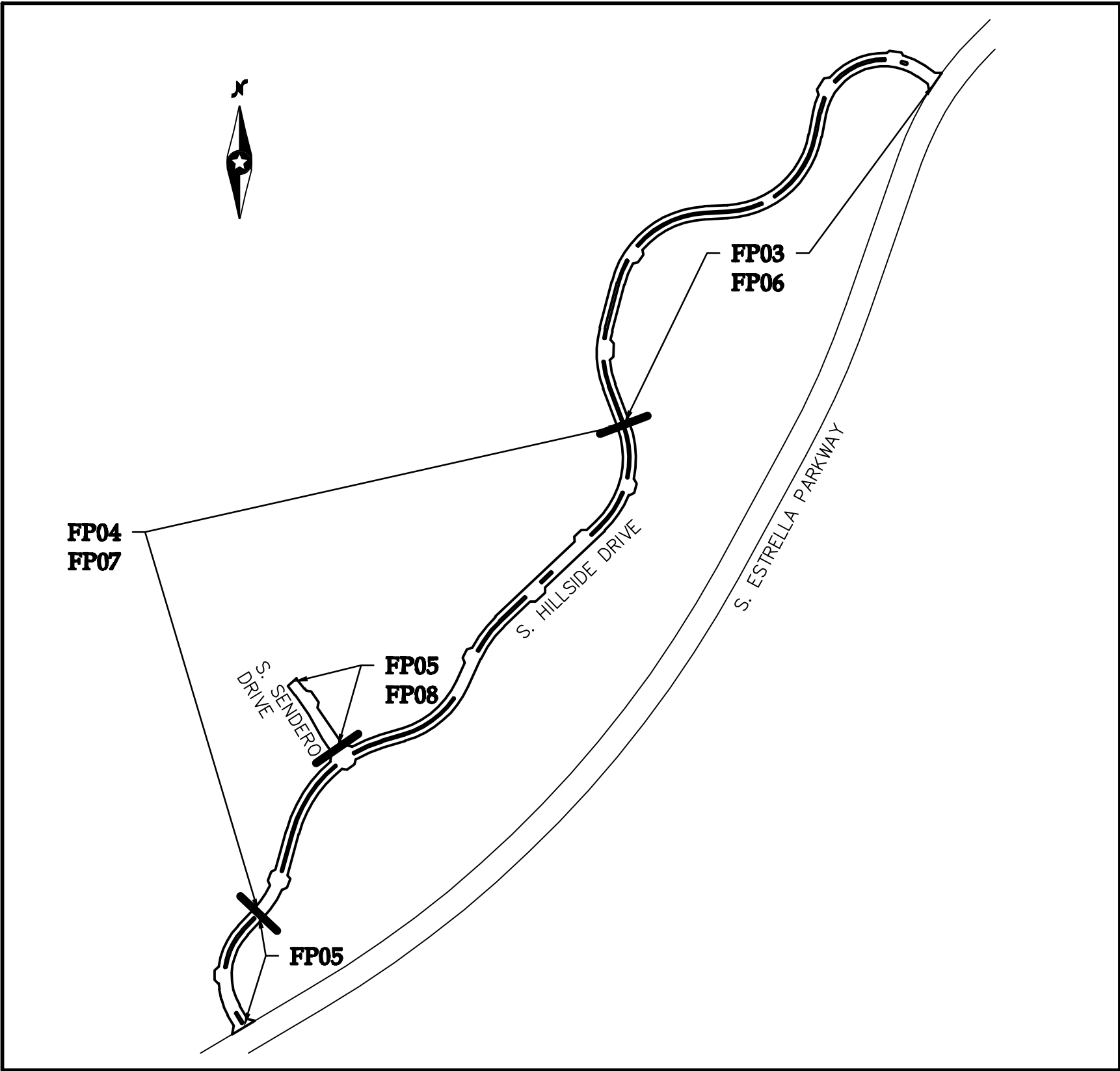
A PORTION OF LAND LYING WITHIN SECTION 1, TOWNSHIP 1 SOUTH, RANGE 2 WEST, AND THE NORTHWEST CORNER OF SECTION 12, TOWNSHIP 1 SOUTH, RANGE 2 WEST, OF THE GLA AND SALT RIVER BASE AND MERIDIAN, MARICOPA COUNTY, ARIZONA, MORE PARTICULARLY DESCRIBED AS FOLLOWS:
COMMENCING AT A FOUND GLO BRASS CAP BEING THE NORTHEAST CORNER OF SECTION 1, TOWNSHIP 1 SOUTH, RANGE 2 WEST, FROM WHICH A FOUND GLO BRASS CAP, BEING THE NORTH QUARTER CORNER OF SECTION 1, TOWNSHIP 1 SOUTH, RANGE 2 WEST, BEARS SOUTH 89 DEGREES 46 MINUTES 22 SECONDS WEST, A DISTANCE OF 2521.93 FEET;
THENCE, ALONG THE EAST LINE OF SAID SECTION 1, SOUTH 00 DEGREES 20 MINUTES 30 SECONDS WEST, A DISTANCE OF 1222.55 FEET TO THE BEGINNING OF A NON-TANGENT CURVE, WHOSE RADIUS BEARS SOUTH 53 DEGREES 36 MINUTES 47 SECONDS EAST, A DISTANCE OF 1665.00 FEET, ALSO BEING A POINT ON THE NORTH RIGHT-OF-WAY OF ESTRELLA PARKWAY AS RECORDED ON "ESTRELLA PHASE ONE MAP OF DEDICATION", BOOK 318, PAGE 38, MARICOPA COUNTY RECORDS (M.C.R.), ALSO BEING THE POINT OF BEGINNING;
THENCE, LEAVING SAID EAST LINE AND ALONG SAID NORTH RIGHT-OF-WAY LINE, SOUTHWESTERLY ALONG SAID CURVE TO THE LEFT, THROUGH A CENTRAL ANGLE OF 04 DEGREES 07 MINUTES 51 SECONDS, A DISTANCE OF 120.04 FEET;
THENCE, LEAVING SAID NORTH RIGHT-OF-WAY LINE, NORTH 11 DEGREES 23 MINUTES 43 SECONDS WEST A DISTANCE OF 42.54 FEET;
THENCE, NORTH 55 DEGREES 32 MINUTES 06 SECONDS WEST A DISTANCE OF 67.23 FEET TO THE BEGINNING OF A TANGENT CURVE, HAVING A RADIUS OF 315.00 FEET;
THENCE, WESTERLY ALONG SAID CURVE TO THE LEFT, THROUGH A CENTRAL ANGLE OF 113 DEGREES 52 MINUTES 40 SECONDS, A DISTANCE OF 626.08 FEET;
THENCE, SOUTH 10 DEGREES 35 MINUTES 14 SECONDS WEST A DISTANCE OF 121.82 FEET TO THE BEGINNING OF A TANGENT CURVE, HAVING A RADIUS OF 535.00 FEET;
THENCE, SOUTHWESTERLY ALONG SAID CURVE TO THE RIGHT, THROUGH A CENTRAL ANGLE OF 76 DEGREES 47 MINUTES 39 SECONDS, A DISTANCE OF 717.07 FEET;
THENCE, SOUTH 87 DEGREES 22 MINUTES 53 SECONDS WEST A DISTANCE OF 124.04 FEET TO THE BEGINNING OF A TANGENT CURVE, HAVING A RADIUS OF 465.00 FEET;
THENCE, ALONG SAID CURVE TO THE LEFT, THROUGH A CENTRAL ANGLE OF 46 DEGREES 51 MINUTES 33 SECONDS, A DISTANCE OF 380.30 FEET;
THENCE, SOUTH 09 DEGREES 17 MINUTES 13 SECONDS EAST A DISTANCE OF 26.46 FEET;
THENCE, SOUTH 34 DEGREES 58 MINUTES 16 SECONDS WEST A DISTANCE OF 50.09 FEET;
THENCE, SOUTH 76 DEGREES 28 MINUTES 03 SECONDS WEST A DISTANCE OF 27.88 FEET TO THE BEGINNING OF A NON-TANGENT CURVE, WHOSE RADIUS BEARS SOUTH 60 DEGREES 34 MINUTES 30 SECONDS EAST, A DISTANCE OF 465.00 FEET;
THENCE, SOUTHWESTERLY ALONG SAID CURVE TO THE LEFT THROUGH A CENTRAL ANGLE OF 14 DEGREES 55 MINUTES 13 SECONDS, A DISTANCE OF 121.09 FEET;
THENCE, SOUTH 14 DEGREES 30 MINUTES 17 SECONDS WEST A DISTANCE OF 256.16 FEET TO THE BEGINNING OF A TANGENT CURVE, HAVING A RADIUS OF 465.00 FEET;
THENCE, SOUTHERLY ALONG SAID CURVE TO THE LEFT THROUGH A CENTRAL ANGLE OF 05 DEGREES 47 MINUTES 38 SECONDS, A DISTANCE OF 47.02 FEET;
THENCE, SOUTH 39 DEGREES 03 MINUTES 53 SECONDS EAST A DISTANCE OF 27.34 FEET;
THENCE, SOUTH 01 DEGREES 44 MINUTES 36 SECONDS WEST A DISTANCE OF 70.11 FEET;
THENCE, SOUTH 45 DEGREES 28 MINUTES 00 SECONDS WEST A DISTANCE OF 26.36 FEET TO THE BEGINNING OF A NON-TANGENT CURVE, WHOSE RADIUS BEARS NORTH 85 DEGREES 08 MINUTES 35 SECONDS EAST, A DISTANCE OF 465.00 FEET;
THENCE, SOUTHERLY ALONG SAID CURVE TO THE LEFT THROUGH A CENTRAL ANGLE OF 15 DEGREES 52 MINUTES 44 SECONDS, A DISTANCE OF 128.87 FEET;
THENCE, SOUTH 20 DEGREES 44 MINUTES 09 SECONDS EAST A DISTANCE OF 221.35 FEET TO THE BEGINNING OF A TANGENT CURVE, HAVING A RADIUS OF 535.00 FEET;
THENCE, SOUTHERLY ALONG SAID CURVE TO THE RIGHT THROUGH A CENTRAL ANGLE OF 32 DEGREES 58 MINUTES 59 SECONDS, A DISTANCE OF 307.98 FEET;
THENCE, SOUTH 30 DEGREES 49 MINUTES 10 SECONDS EAST A DISTANCE OF 28.71 FEET;
THENCE, SOUTH 17 DEGREES 04 MINUTES 03 SECONDS WEST A DISTANCE OF 50.05 FEET;
THENCE, SOUTH 62 DEGREES 58 MINUTES 14 SECONDS WEST A DISTANCE OF 29.65 FEET TO THE BEGINNING OF A NON-TANGENT CURVE, WHOSE RADIUS BEARS NORTH 68 DEGREES 06 MINUTES 36 SECONDS WEST, A DISTANCE OF 535.00 FEET;
THENCE, SOUTHWESTERLY ALONG SAID CURVE TO THE RIGHT THROUGH A CENTRAL ANGLE OF 24 DEGREES 37 MINUTES 41 SECONDS, A DISTANCE OF 229.96 FEET;
THENCE, SOUTH 46 DEGREES 31 MINUTES 05 SECONDS WEST A DISTANCE OF 440.30 FEET;
THENCE, SOUTH 01 DEGREES 31 MINUTES 05 SECONDS WEST A DISTANCE OF 28.28 FEET;
THENCE, SOUTH 46 DEGREES 31 MINUTES 05 SECONDS WEST A DISTANCE OF 70.00 FEET;
THENCE, NORTH 88 DEGREES 28 MINUTES 55 SECONDS WEST A DISTANCE OF 28.28 FEET;
THENCE, SOUTH 46 DEGREES 31 MINUTES 05 SECONDS WEST A DISTANCE OF 191.64 FEET TO THE BEGINNING OF A TANGENT CURVE, HAVING A RADIUS OF 565.00 FEET;
THENCE, SOUTHWESTERLY ALONG SAID CURVE TO THE LEFT THROUGH A CENTRAL ANGLE OF 21 DEGREES 57 MINUTES 47 SECONDS, A DISTANCE OF 216.58 FEET;
THENCE, SOUTH 24 DEGREES 33 MINUTES 18 SECONDS WEST A DISTANCE OF 160.38 FEET TO THE BEGINNING OF A TANGENT CURVE, HAVING A RADIUS OF 535.00 FEET;
THENCE, ALONG SAID CURVE TO THE RIGHT THROUGH A CENTRAL ANGLE OF 49 DEGREES 07 MINUTES 07 SECONDS, A DISTANCE OF 458.65 FEET;
THENCE, SOUTH 73 DEGREES 40 MINUTES 25 SECONDS WEST A DISTANCE OF 118.96 FEET TO THE BEGINNING OF A TANGENT CURVE, HAVING A RADIUS OF 685.00 FEET;
THENCE, SOUTHWESTERLY ALONG SAID CURVE TO THE LEFT THROUGH A CENTRAL ANGLE OF 13 DEGREES 59 MINUTES 07 SECONDS, A DISTANCE OF 162.32 FEET;
THENCE, SOUTH 12 DEGREES 19 MINUTES 08 SECONDS WEST A DISTANCE OF 27.53 FEET;
THENCE, SOUTH 55 DEGREES 49 MINUTES 43 SECONDS WEST A DISTANCE OF 50.00 FEET;
THENCE, NORTH 80 DEGREES 43 MINUTES 16 SECONDS WEST A DISTANCE OF 27.52 FEET TO THE BEGINNING OF A NON-TANGENT CURVE, WHOSE RADIUS BEARS SOUTH 38 DEGREES 04 MINUTES 01 SECONDS EAST, A DISTANCE OF 685.00 FEET;
THENCE, SOUTHWESTERLY ALONG SAID CURVE TO THE LEFT THROUGH A CENTRAL ANGLE OF 36 DEGREES 36 MINUTES 08 SECONDS, A DISTANCE OF 424.82 FEET;
THENCE, SOUTH 15 DEGREES 19 MINUTES 51 SECONDS WEST A DISTANCE OF 230.99 FEET;
THENCE, SOUTH 40 DEGREES 45 MINUTES 05 SECONDS EAST A DISTANCE OF 23.90 FEET;
THENCE, SOUTH 19 DEGREES 19 MINUTES 24 SECONDS WEST A DISTANCE OF 50.01 FEET;
THENCE, SOUTH 65 DEGREES 43 MINUTES 50 SECONDS WEST A DISTANCE OF 29.42 FEET TO THE BEGINNING OF A NON-TANGENT CURVE, WHOSE RADIUS BEARS NORTH 65 DEGREES 51 MINUTES 21 SECONDS WEST, A DISTANCE OF 535.00 FEET;
THENCE, SOUTHWESTERLY ALONG SAID CURVE TO THE RIGHT THROUGH A CENTRAL ANGLE OF 19 DEGREES 23 MINUTES 48 SECONDS, A DISTANCE OF 181.12 FEET;
THENCE, SOUTH 43 DEGREES 32 MINUTES 27 SECONDS WEST A DISTANCE OF 123.95 FEET TO THE BEGINNING OF A TANGENT CURVE, HAVING A RADIUS OF 315.00 FEET;
THENCE, SOUTHERLY ALONG SAID CURVE TO THE LEFT THROUGH A CENTRAL ANGLE OF 74 DEGREES 14 MINUTES 15 SECONDS, A DISTANCE OF 408.14 FEET;
THENCE, SOUTH 30 DEGREES 41 MINUTES 48 SECONDS EAST A DISTANCE OF 82.85 FEET;
THENCE, SOUTH 75 DEGREES 55 MINUTES 54 SECONDS EAST A DISTANCE OF 42.30 FEET TO A POINT ON SAID NORTH RIGHT-OF-WAY OF ESTRELLA PARKWAY;
THENCE, ALONG SAID NORTH RIGHT-OF-WAY LINE SOUTH 59 DEGREES 18 MINUTES 12 SECONDS WEST A DISTANCE OF 141.58 FEET;
THENCE, LEAVING SAID NORTH RIGHT-OF-WAY LINE NORTH 09 DEGREES 18 MINUTES 34 SECONDS EAST A DISTANCE OF 45.96 FEET;
THENCE, NORTH 30 DEGREES 41 MINUTES 48 SECONDS WEST A DISTANCE OF 65.18 FEET TO THE BEGINNING OF A TANGENT CURVE, HAVING A RADIUS OF 264.00 FEET;
THENCE, NORTHWESTERLY ALONG SAID CURVE TO THE RIGHT THROUGH A CENTRAL ANGLE OF 19 DEGREES 47 MINUTES 07 SECONDS, A DISTANCE OF 91.16 FEET;
THENCE, NORTH 10 DEGREES 54 MINUTES 41 SECONDS WEST A DISTANCE OF 56.55 FEET TO THE BEGINNING OF A TANGENT CURVE, HAVING A RADIUS OF 385.00 FEET;
THENCE, NORTHERLY ALONG SAID CURVE TO THE RIGHT THROUGH A CENTRAL ANGLE OF 04 DEGREES 30 MINUTES 33 SECONDS, A DISTANCE OF 30.30 FEET;
THENCE, NORTH 47 DEGREES 18 MINUTES 29 SECONDS WEST A DISTANCE OF 29.54 FEET;
THENCE, NORTH 00 DEGREES 17 MINUTES 51 SECONDS EAST A DISTANCE OF 50.00 FEET;
THENCE, NORTH 47 DEGREES 54 MINUTES 12 SECONDS EAST A DISTANCE OF 29.54 FEET TO THE BEGINNING OF A NON-TANGENT CURVE, WHOSE RADIUS BEARS SOUTH 83 DEGREES 00 MINUTES 09 SECONDS EAST, A DISTANCE OF 385.00 FEET;
THENCE, NORTHEASTERLY ALONG SAID CURVE TO THE RIGHT THROUGH A CENTRAL ANGLE OF 36 DEGREES 32 MINUTES 37 SECONDS, A DISTANCE OF 245.55 FEET;
THENCE, NORTH 43 DEGREES 32 MINUTES 27 SECONDS EAST A DISTANCE OF 123.95 FEET TO THE BEGINNING OF A TANGENT CURVE, HAVING A RADIUS OF 465.00 FEET;
THENCE, NORTHEASTERLY ALONG SAID CURVE TO THE LEFT THROUGH A CENTRAL ANGLE OF 18 DEGREES 43 MINUTES 11 SECONDS, A DISTANCE OF 151.93 FEET;
THENCE, NORTH 20 DEGREES 53 MINUTES 47 SECONDS WEST A DISTANCE OF 28.54 FEET;
THENCE, NORTH 19 DEGREES 17 MINUTES 40 SECONDS EAST A DISTANCE OF 50.39 FEET;
THENCE, NORTH 65 DEGREES 24 MINUTES 15 SECONDS EAST A DISTANCE OF 25.75 FEET;
THENCE, NORTH 15 DEGREES 19 MINUTES 51 SECONDS EAST A DISTANCE OF 217.85 FEET TO THE BEGINNING OF A TANGENT CURVE, HAVING A RADIUS OF 735.00 FEET;
THENCE, NORTHEASTERLY ALONG SAID CURVE TO THE RIGHT THROUGH A CENTRAL ANGLE OF 34 DEGREES 37 MINUTES 53 SECONDS, A DISTANCE OF 444.26 FEET;

LEGAL DESCRIPTION (CONTINUED)

THENCE, NORTH 08 DEGREES 31 MINUTES 47 SECONDS EAST A DISTANCE OF 48.49 FEET;
THENCE, NORTH 34 DEGREES 11 MINUTES 21 SECONDS WEST A DISTANCE OF 86.82 FEET;
THENCE, NORTH 29 DEGREES 36 MINUTES 55 SECONDS WEST A DISTANCE OF 150.48 FEET;
THENCE, NORTH 34 DEGREES 11 MINUTES 21 SECONDS WEST A DISTANCE OF 124.70 FEET TO THE BEGINNING OF A TANGENT CURVE, HAVING A RADIUS OF 460.00 FEET;
THENCE, NORTHWESTERLY ALONG SAID CURVE TO THE LEFT THROUGH A CENTRAL ANGLE OF 07 DEGREES 47 MINUTES 51 SECONDS, A DISTANCE OF 62.60 FEET;
THENCE, NORTH 48 DEGREES 00 MINUTES 48 SECONDS EAST A DISTANCE OF 60.00 FEET TO THE BEGINNING OF A NON-TANGENT CURVE, WHOSE RADIUS BEARS SOUTH 48 DEGREES 00 MINUTES 48 SECONDS WEST, A DISTANCE OF 520.00 FEET;
THENCE, SOUTHEASTERLY ALONG SAID CURVE TO THE RIGHT THROUGH A CENTRAL ANGLE OF 07 DEGREES 47 MINUTES 51 SECONDS, A DISTANCE OF 70.77 FEET;
THENCE, SOUTH 34 DEGREES 11 MINUTES 21 SECONDS EAST A DISTANCE OF 11.33 FEET;
THENCE, SOUTH 79 DEGREES 11 MINUTES 21 SECONDS EAST A DISTANCE OF 28.28 FEET;
THENCE, SOUTH 34 DEGREES 11 MINUTES 21 SECONDS EAST A DISTANCE OF 70.00 FEET;
THENCE, SOUTH 10 DEGREES 48 MINUTES 39 SECONDS WEST A DISTANCE OF 28.28 FEET;
THENCE, SOUTH 34 DEGREES 11 MINUTES 21 SECONDS EAST A DISTANCE OF 239.60 FEET;
THENCE, SOUTH 77 DEGREES 22 MINUTES 35 SECONDS EAST A DISTANCE OF 48.12 FEET TO THE BEGINNING OF A NON-TANGENT CURVE, WHOSE RADIUS BEARS SOUTH 29 DEGREES 16 MINUTES 38 SECONDS EAST, A DISTANCE OF 735.00 FEET;
THENCE, EASTERLY ALONG SAID CURVE TO THE RIGHT THROUGH A CENTRAL ANGLE OF 12 DEGREES 57 MINUTES 03 SECONDS, A DISTANCE OF 166.14 FEET;
THENCE, NORTH 73 DEGREES 40 MINUTES 25 SECONDS EAST A DISTANCE OF 118.96 FEET TO THE BEGINNING OF A TANGENT CURVE, HAVING A RADIUS OF 465.00 FEET;
THENCE, NORTHEASTERLY ALONG SAID CURVE TO THE LEFT THROUGH A CENTRAL ANGLE OF 49 DEGREES 07 MINUTES 07 SECONDS, A DISTANCE OF 398.64 FEET;
THENCE, NORTH 24 DEGREES 33 MINUTES 18 SECONDS EAST A DISTANCE OF 106.22 FEET;
THENCE, NORTH 20 DEGREES 26 MINUTES 42 SECONDS WEST A DISTANCE OF 28.28 FEET;
THENCE, NORTH 24 DEGREES 46 MINUTES 53 SECONDS EAST A DISTANCE OF 50.00 FEET;
THENCE, NORTH 70 DEGREES 43 MINUTES 15 SECONDS EAST A DISTANCE OF 28.85 FEET TO THE BEGINNING OF A NON-TANGENT CURVE, WHOSE RADIUS BEARS SOUTH 62 DEGREES 12 MINUTES 40 SECONDS EAST, A DISTANCE OF 635.00 FEET;
THENCE, NORTHEASTERLY ALONG SAID CURVE TO THE RIGHT THROUGH A CENTRAL ANGLE OF 18 DEGREES 43 MINUTES 45 SECONDS, A DISTANCE OF 207.57 FEET;
THENCE, NORTH 46 DEGREES 31 MINUTES 05 SECONDS EAST A DISTANCE OF 583.26 FEET;
THENCE, NORTH 01 DEGREES 11 MINUTES 53 SECONDS WEST A DISTANCE OF 26.91 FEET;
THENCE, NORTH 46 DEGREES 29 MINUTES 58 SECONDS EAST A DISTANCE OF 50.30 FEET;
THENCE, NORTH 89 DEGREES 03 MINUTES 39 SECONDS EAST A DISTANCE OF 29.47 FEET;
THENCE, NORTH 46 DEGREES 31 MINUTES 05 SECONDS EAST A DISTANCE OF 68.56 FEET TO THE BEGINNING OF A TANGENT CURVE, HAVING A RADIUS OF 465.00 FEET;
THENCE, NORTHERLY ALONG SAID CURVE TO THE LEFT THROUGH A CENTRAL ANGLE OF 67 DEGREES 15 MINUTES 14 SECONDS, A DISTANCE OF 545.82 FEET;
THENCE, NORTH 20 DEGREES 44 MINUTES 09 SECONDS WEST A DISTANCE OF 221.35 FEET TO THE BEGINNING OF A TANGENT CURVE, HAVING A RADIUS OF 535.00 FEET;
THENCE, NORTHERLY ALONG SAID CURVE TO THE RIGHT THROUGH A CENTRAL ANGLE OF 35 DEGREES 14 MINUTES 26 SECONDS, A DISTANCE OF 329.06 FEET;
THENCE, NORTH 14 DEGREES 30 MINUTES 17 SECONDS EAST A DISTANCE OF 256.16 FEET TO THE BEGINNING OF A TANGENT CURVE, HAVING A RADIUS OF 535.00 FEET;
THENCE, NORTHEASTERLY ALONG SAID CURVE TO THE RIGHT THROUGH A CENTRAL ANGLE OF 72 DEGREES 52 MINUTES 37 SECONDS, A DISTANCE OF 680.49 FEET;
THENCE, NORTH 87 DEGREES 22 MINUTES 53 SECONDS EAST A DISTANCE OF 124.04 FEET TO THE BEGINNING OF A TANGENT CURVE, HAVING A RADIUS OF 465.00 FEET;
THENCE, NORTHEASTERLY ALONG SAID CURVE TO THE LEFT THROUGH A CENTRAL ANGLE OF 76 DEGREES 47 MINUTES 39 SECONDS, A DISTANCE OF 623.24 FEET;
THENCE, NORTH 10 DEGREES 35 MINUTES 14 SECONDS EAST A DISTANCE OF 121.82 FEET TO THE BEGINNING OF A TANGENT CURVE, HAVING A RADIUS OF 385.00 FEET;
THENCE, NORTHERLY ALONG SAID CURVE TO THE RIGHT THROUGH A CENTRAL ANGLE OF 14 DEGREES 11 MINUTES 35 SECONDS, A DISTANCE OF 95.37 FEET;
THENCE, NORTH 15 DEGREES 22 MINUTES 45 SECONDS WEST A DISTANCE OF 29.89 FEET;
THENCE, NORTH 32 DEGREES 58 MINUTES 23 SECONDS EAST A DISTANCE OF 70.00 FEET;
THENCE, NORTH 81 DEGREES 19 MINUTES 30 SECONDS EAST A DISTANCE OF 29.89 FEET TO THE BEGINNING OF A NON-TANGENT CURVE, WHOSE RADIUS BEARS SOUTH 48 DEGREES 50 MINUTES 04 SECONDS EAST, A DISTANCE OF 385.00 FEET;
THENCE, EASTERLY ALONG SAID CURVE TO THE RIGHT THROUGH A CENTRAL ANGLE OF 51 DEGREES 00 MINUTES 41 SECONDS A DISTANCE OF 342.77 FEET;
THENCE, NORTH 51 DEGREES 16 MINUTES 16 SECONDS EAST A DISTANCE OF 19.16 FEET;
THENCE, SOUTH 81 DEGREES 07 MINUTES 23 SECONDS EAST A DISTANCE OF 64.00 FEET;
THENCE, SOUTH 33 DEGREES 31 MINUTES 02 SECONDS EAST A DISTANCE OF 19.16 FEET TO THE BEGINNING OF A NON-TANGENT CURVE, WHOSE RADIUS BEARS SOUTH 15 DEGREES 34 MINUTES 36 SECONDS WEST, A DISTANCE OF 385.00 FEET;
THENCE, SOUTHEASTERLY ALONG SAID CURVE TO THE RIGHT THROUGH A CENTRAL ANGLE OF 18 DEGREES 53 MINUTES 18 SECONDS, A DISTANCE OF 126.92 FEET;
THENCE, SOUTH 55 DEGREES 32 MINUTES 06 SECONDS EAST A DISTANCE OF 66.91 FEET;
THENCE, SOUTH 89 DEGREES 15 MINUTES 19 SECONDS EAST A DISTANCE OF 36.73 FEET TO THE POINT OF BEGINNING.

LEGEND & ABBREVIATIONS

▲	SET CORNER OF THIS MAP OF DEDICATION WITH 1/2" REBAR MARKED RLS 48460 UNLESS OTHERWISE NOTED
⊙	EXISTING BRASS CAP
⊙	BRASS CAP TO BE SET BY A REGISTERED LAND SURVEYOR, REGISTERED IN THE STATE OF ARIZONA, POST CONSTRUCTION
_____	RIGHT-OF-WAY LINE
_____ -- _____	CENTER LINE
-----	EASEMENT LINE
--- -- --	SIGHT VISIBILITY LINE
_____ -- -- _____	SECTION LINE
_____ -- _____	MID-SECTION LINE
-----	TIE LINE
L1	LINE TABLE NUMBER
C1	CURVE TABLE NUMBER
SVL100	SIGHT VISIBILITY LINE TABLE NUMBER
TL200	TIE LINE TABLE NUMBER
R/W	RIGHT-OF-WAY
M.C.R.	MARICOPA COUNTY RECORDS
P.U.E.	PUBLIC UTILITY EASEMENT
SVL	SIGHT VISIBILITY LINE
P.O.C.	POINT OF COMMENCEMENT
P.O.B.	POINT OF BEGINNING



KEY MAP
NTS

Westwood

Westwood Professional Services, Inc.
6909 East Greenway Parkway, Suite 250
Scottsdale, AZ 85254

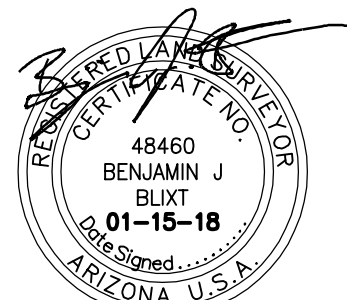
Phone (480) 747-6558
Fax (480) 376-8025

westwoodps.com

Designed:	WPS
Checked:	BJB
Drawn:	KWD
Project Number:	000934200

Prepared for:

NNP III-EMR 3, LLC
5090 North 40th Street, Suite 210
Phoenix, Arizona 85018



EXPIRES 09/30/20

Map of Dedication

Goodyear, Arizona

Legal Description,
Legend, and
Key Map

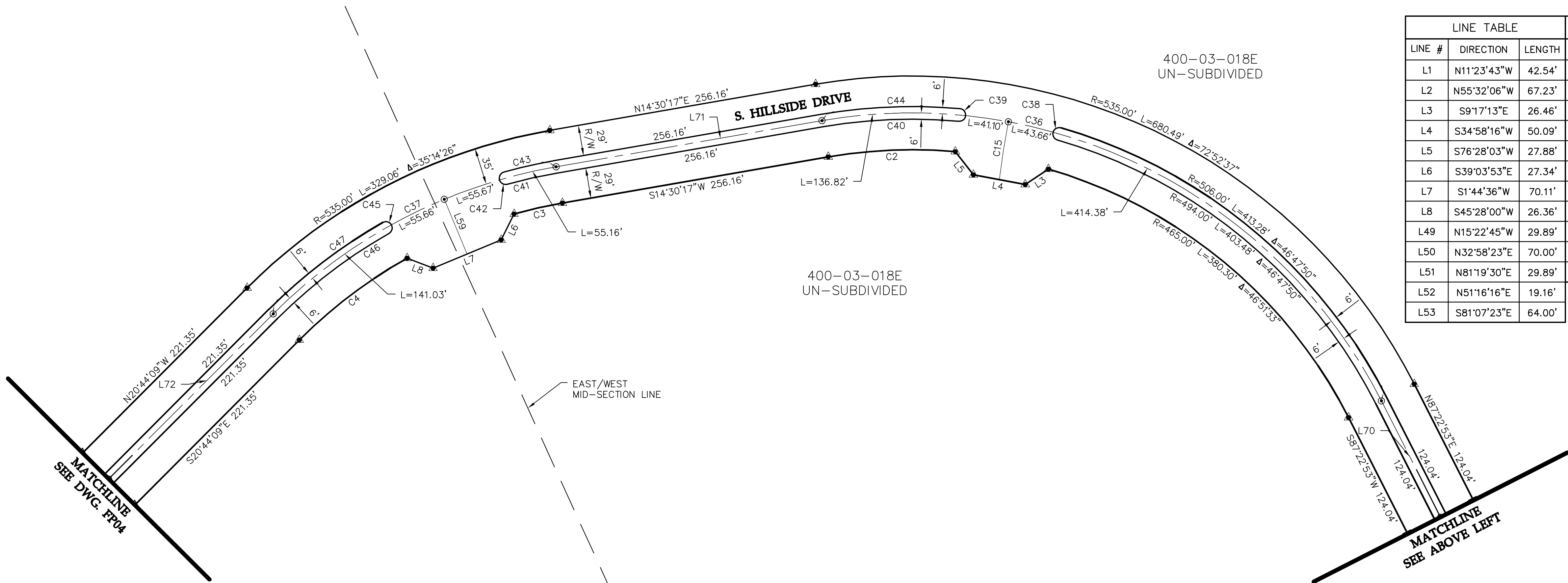
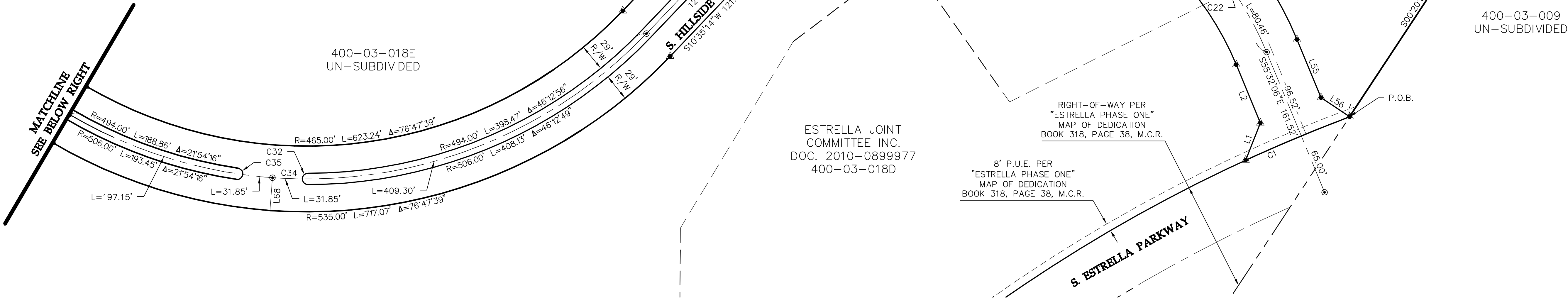
Date: 01/15/2018

Drawing No: FP02

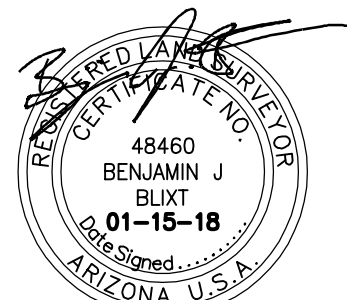
Sheet No: 2 of 8

0009342MODFP02.dwg

CURVE TABLE						CURVE TABLE						CURVE TABLE					
CURVE #	RADIUS	LENGTH	DELTA	CHORD DIRECTION	CHORD LENGTH	CURVE #	RADIUS	LENGTH	DELTA	CHORD DIRECTION	CHORD LENGTH	CURVE #	RADIUS	LENGTH	DELTA	CHORD DIRECTION	CHORD LENGTH
C1	1665.00'	120.04'	4°07'51"	S 34°19'18" W	120.01'	C30	6.00'	18.85'	180°00'00"	S 65°23'05" E	12.00'	C44	506.00'	132.39'	14°59'27"	S 22°00'00" W	132.01'
C2	465.00'	121.09'	14°55'13"	S 21°57'54" W	120.75'	C31	344.00'	84.22'	14°01'41"	S 17°36'05" W	84.01'	C45	6.00'	18.85'	180°00'00"	S 84°44'17" W	12.00'
C3	465.00'	47.02'	5°47'38"	S 11°36'28" W	47.00'	C32	6.00'	18.85'	180°00'00"	N 33°16'30" W	12.00'	C46	494.00'	133.41'	15°28'26"	N 12°59'56" W	133.01'
C4	465.00'	128.87'	15°52'44"	S 12°47'47" E	128.46'	C33	356.00'	87.16'	14°01'41"	N 17°36'05" E	86.94'	C47	506.00'	136.66'	15°28'26"	S 12°59'56" E	136.24'
C13	385.00'	95.37'	14°11'35"	S 17°41'02" W	95.13'	C34	500.00'	670.16'	76°47'39"	N 48°59'04" E	621.11'						
C14	385.00'	126.92'	18°53'18"	N 64°58'45" W	126.35'	C35	6.00'	18.85'	180°00'00"	N 24°31'23" W	12.00'						
C15	975.00'	55.68'	3°16'20"	S 56°44'35" E	55.67'	C36	500.00'	635.97'	72°52'37"	S 50°56'35" W	593.96'						
C21	350.00'	695.64'	113°52'40"	S 67°31'34" W	586.66'	C37	500.00'	307.53'	35°14'26"	S 3°06'56" E	302.71'						
C22	6.00'	18.85'	180°00'00"	S 20°18'38" W	12.00'	C38	6.00'	18.85'	180°00'00"	S 49°24'57" E	12.00'						
C23	344.00'	28.96'	4°49'27"	N 72°06'05" W	28.96'	C39	6.00'	18.85'	180°00'00"	N 60°30'16" W	12.00'						
C24	6.00'	18.85'	180°00'00"	N 15°29'11" E	12.00'	C40	494.00'	129.25'	14°59'27"	N 22°00'00" E	128.88'						
C25	356.00'	29.97'	4°49'27"	S 72°06'05" E	29.97'	C41	494.00'	48.57'	5°38'02"	N 11°41'16" E	48.55'						
C26	6.00'	18.87'	180°10'06"	N 0°57'23" E	12.00'	C42	6.00'	18.85'	180°00'00"	S 81°07'45" E	12.00'						
C27	6.00'	18.87'	180°10'06"	S 48°40'10" E	12.00'	C43	506.00'	49.75'	5°38'02"	S 11°41'16" W	49.73'						



LINE TABLE			LINE TABLE		
LINE #	DIRECTION	LENGTH	LINE #	DIRECTION	LENGTH
L1	N11°23'43"W	42.54'	L54	S33°31'02"E	19.16'
L2	N55°32'06"W	67.23'	L55	S55°32'06"E	66.91'
L3	S9°17'13"E	26.46'	L56	S89°15'19"E	36.73'
L4	S34°58'16"W	50.09'	L57	N8°52'37"E	46.52'
L5	S76°28'03"W	27.88'	L58	N57°01'37"W	53.41'
L6	S39°03'53"E	27.34'	L59	N88°11'45"W	56.30'
L7	S1°44'36"W	70.11'	L68	S28°51'38"E	35.00'
L8	S45°28'00"W	26.36'	L69	N10°35'14"E	121.82'
L49	N15°22'45"W	29.89'	L70	N87°22'53"E	124.04'
L50	N32°58'23"E	70.00'	L71	N14°30'17"E	256.16'
L51	N81°19'30"E	29.89'	L72	N20°44'09"W	221.35'
L52	N51°16'16"E	19.16'			
L53	S81°07'23"E	64.00'			

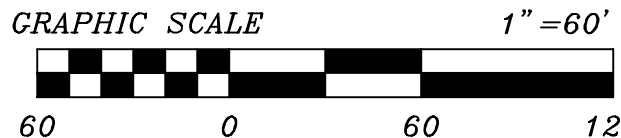


Map of Dedication

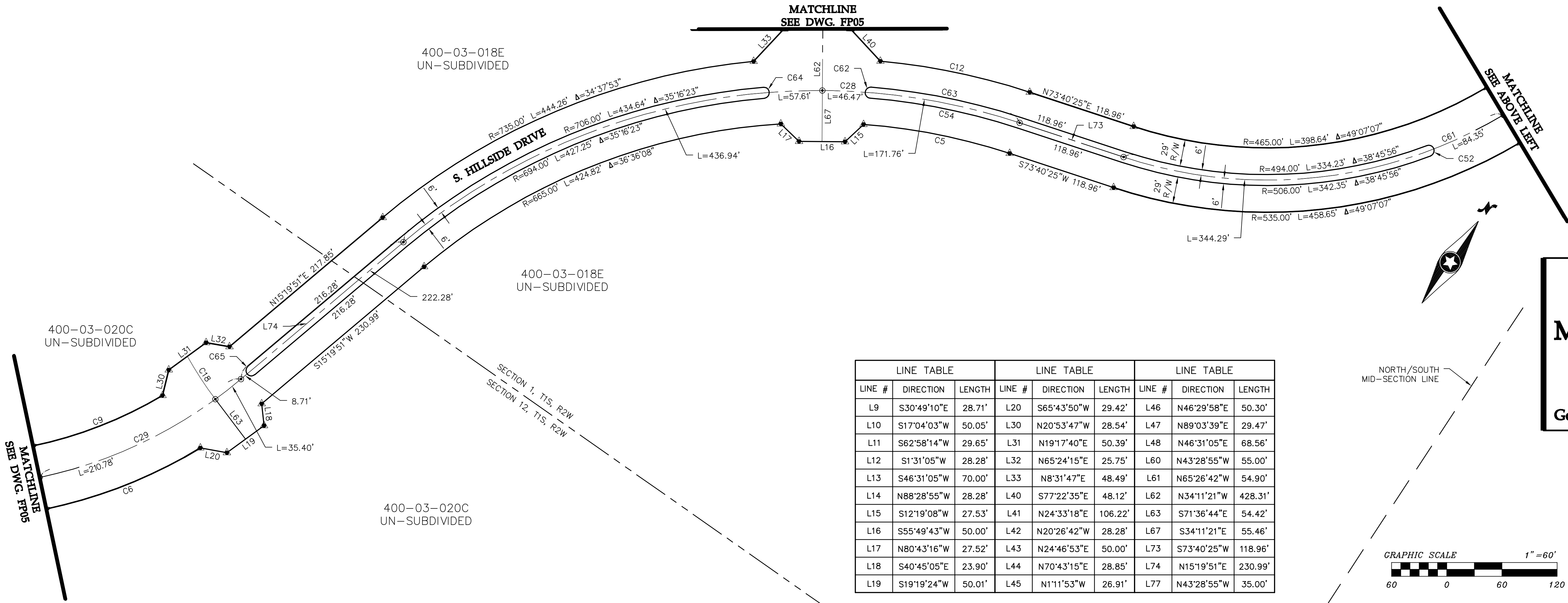
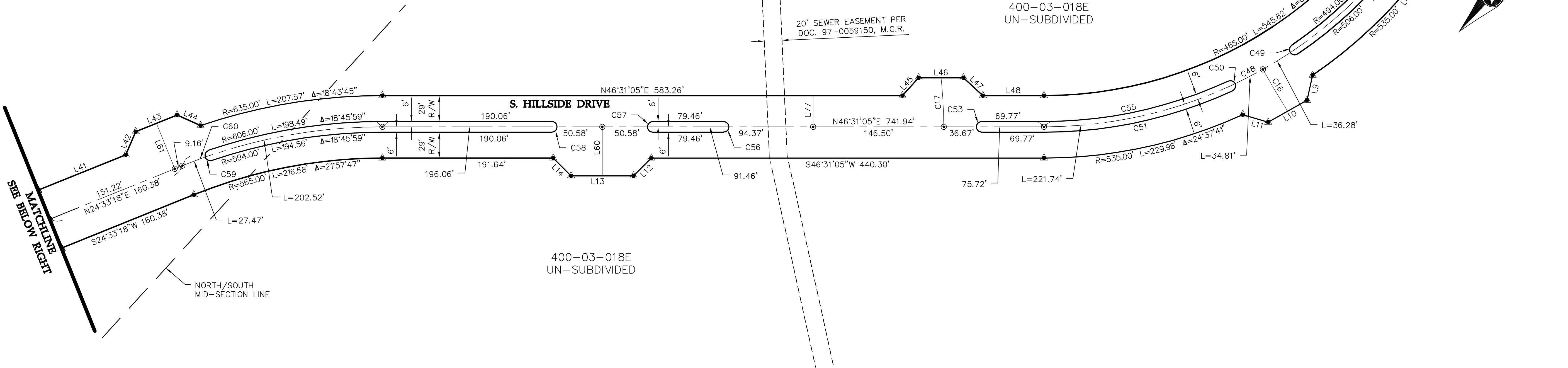
Goodyear, Arizona

Right of Way
Plan Sheet

Date: 01/15/2018
Drawing No: FP03
Sheet No: 3 of 8



CURVE TABLE						CURVE TABLE						CURVE TABLE					
CURVE #	RADIUS	LENGTH	DELTA	CHORD DIRECTION	CHORD LENGTH	CURVE #	RADIUS	LENGTH	DELTA	CHORD DIRECTION	CHORD LENGTH	CURVE #	RADIUS	LENGTH	DELTA	CHORD DIRECTION	CHORD LENGTH
C5	665.00'	162.32'	13°59'07"	S 66°40'52" W	161.92'	C48	500.00'	586.90'	67°15'14"	N 12°53'28" E	553.78'	C57	6.00'	18.85'	180°00'00"	S 43°28'55" E	12.00'
C6	535.00'	181.12'	19°23'48"	N 33°50'33" E	180.25'	C49	6.00'	18.85'	180°00'00"	S 77°43'32" E	12.00'	C58	6.00'	18.85'	180°00'00"	N 43°28'55" W	12.00'
C9	465.00'	151.93'	18°43'11"	N 34°10'52" E	151.25'	C50	6.00'	18.85'	180°00'00"	N 68°12'16" W	12.00'	C59	6.00'	18.85'	180°00'00"	S 62°14'55" E	12.00'
C12	735.00'	166.14'	12°57'03"	S 67°11'53" W	165.78'	C51	506.00'	218.33'	24°43'21"	N 34°09'24" E	216.64'	C60	600.00'	230.00'	21°57'47"	S 35°32'11" W	228.59'
C16	1250.00'	54.42'	2°29'40"	S 74°07'40" E	54.42'	C52	6.00'	18.85'	180°00'00"	N 55°05'31" W	12.00'	C61	500.00'	428.64'	49°07'07"	N 49°06'51" E	415.64'
C17	500.00'	55.03'	6°18'21"	N 46°38'06" W	55.00'	C53	6.00'	18.76'	179°05'33"	S 43°28'55" E	12.00'	C62	6.00'	18.85'	180°00'00"	S 29°53'39" E	12.00'
C18	400.00'	55.70'	7°58'44"	S 67°36'14" E	55.66'	C54	694.00'	164.34'	13°34'04"	N 66°53'23" E	163.96'	C63	706.00'	167.18'	13°34'04"	S 66°53'23" W	166.79'
C28	700.00'	712.79'	58°20'34"	S 44°30'08" W	682.39'	C55	494.00'	213.15'	24°43'21"	S 34°09'24" W	211.51'	C64	6.00'	18.85'	180°00'00"	N 39°23'46" W	12.00'
C29	500.00'	246.18'	28°12'37"	N 29°26'09" E	243.70'	C56	6.00'	18.85'	180°00'00"	N 43°28'55" W	12.00'	C65	6.00'	18.85'	180°00'00"	S 74°39'56" E	12.00'



LINE TABLE				LINE TABLE				LINE TABLE			
LINE #	DIRECTION	LENGTH		LINE #	DIRECTION	LENGTH		LINE #	DIRECTION	LENGTH	
L9	S30°49'10"E	28.71'		L20	S65°43'50"W	29.42'		L46	N46°29'58"E	50.30'	
L10	S17°04'03"W	50.05'		L30	N20°53'47"W	28.54'		L47	N89°03'39"E	29.47'	
L11	S62°58'14"W	29.65'		L31	N19°17'40"E	50.39'		L48	N46°31'05"E	68.56'	
L12	S1°31'05"W	28.28'		L32	N65°24'15"E	25.75'		L60	N43°28'55"W	55.00'	
L13	S46°31'05"W	70.00'		L33	N8°31'47"E	48.49'		L61	N65°26'42"W	54.90'	
L14	N88°28'55"W	28.28'		L40	S77°22'35"E	48.12'		L62	N34°11'21"W	428.31'	
L15	S12°19'08"W	27.53'		L41	N24°33'18"E	106.22'		L63	S71°36'44"E	54.42'	
L16	S55°49'43"W	50.00'		L42	N20°26'42"W	28.28'		L67	S34°11'21"E	55.46'	
L17	N80°43'16"W	27.52'		L43	N24°46'53"E	50.00'		L73	S73°40'25"W	118.96'	
L18	S40°45'05"E	23.90'		L44	N70°43'15"E	28.85'		L74	N15°19'51"E	230.99'	
L19	S19°19'24"W	50.01'		L45	N11°15'53"W	26.91'		L77	N43°28'55"W	35.00'	

Westwood

Westwood Professional Services, Inc.
6909 East Greenway Parkway, Suite 250
Scottsdale, AZ 85254

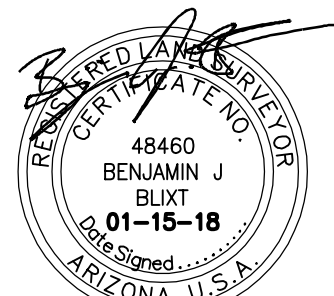
Phone (480) 747-6558
Fax (480) 376-8025

westwoodps.com

Designed: WPS
Checked: BJB
Drawn: KWD
Project Number: 000934200

Prepared for:

NNP III-EMR 3, LLC
5090 North 40th Street, Suite 210
Phoenix, Arizona 85018



EXPIRES 09/30/20

Map of Dedication

Goodyear, Arizona

Right of Way
Plan Sheet

Date: 01/15/2018

Drawing No: FP04

Sheet No: 4 of 8

0009342MODF02.dwg

Westwood

Westwood Professional Services, Inc.
6909 East Greenway Parkway, Suite 250
Scottsdale, AZ 85254

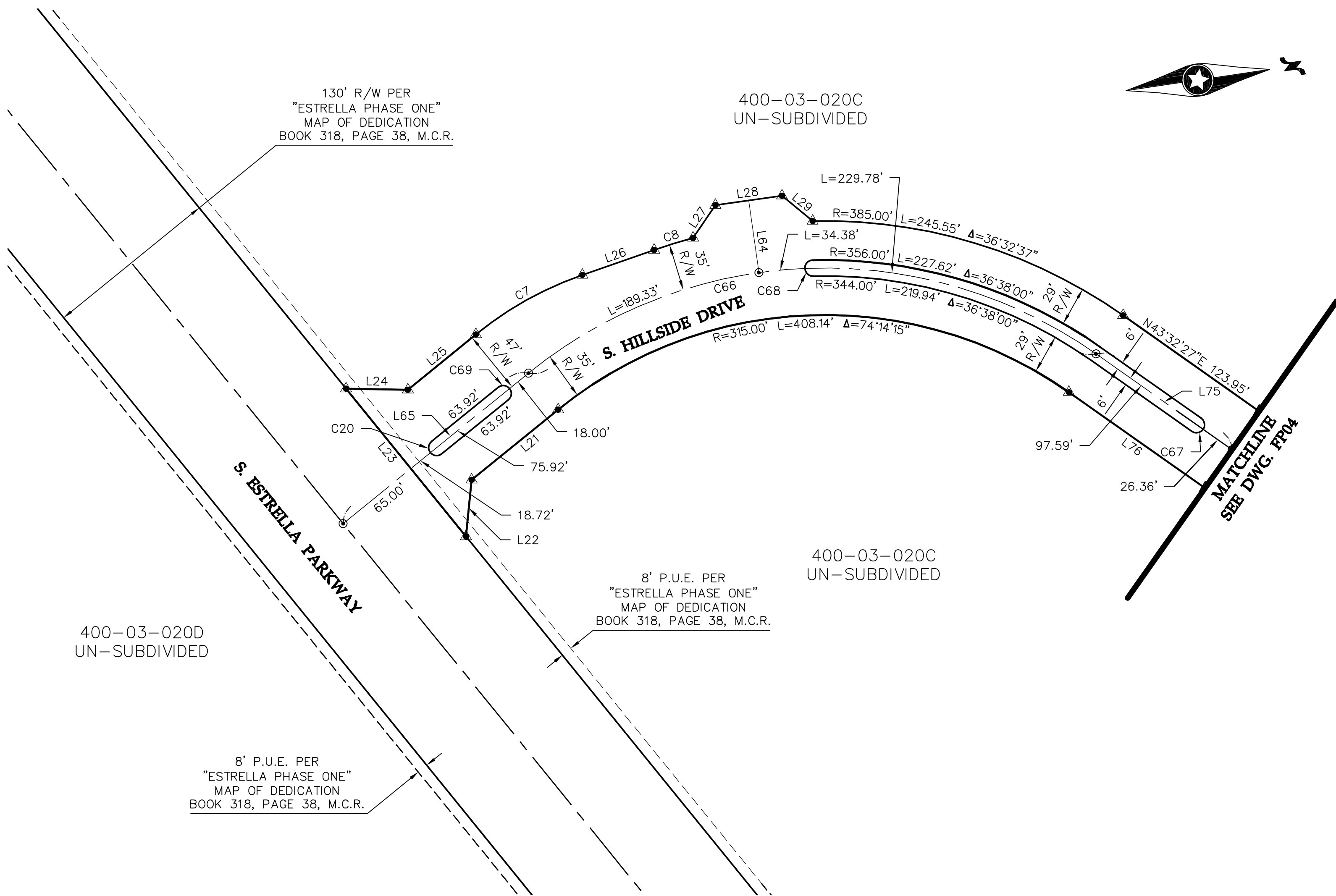
Phone (480) 747-6558
Fax (480) 376-8025

westwoodps.com

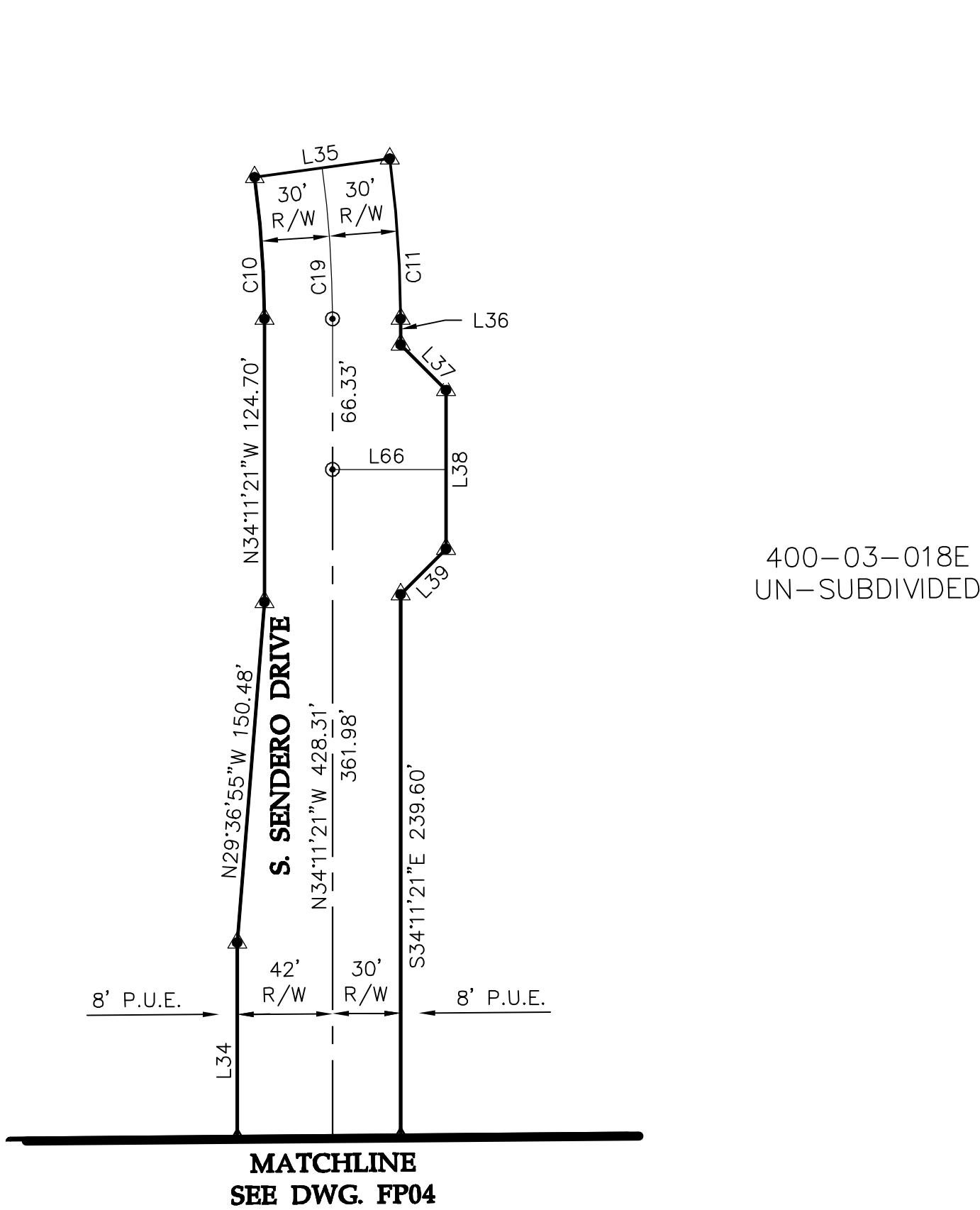
Designed: WPS
Checked: BJB
Drawn: KWD
Project Number: 000934200

Prepared for:

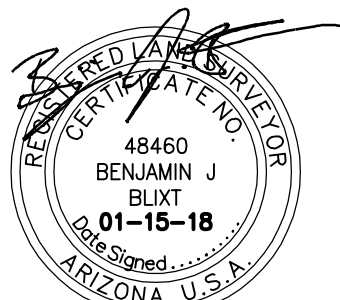
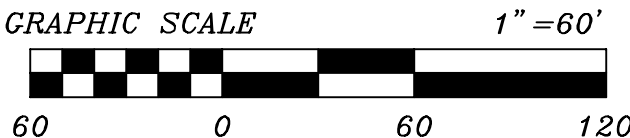
NNP III-EMR 3, LLC
5090 North 40th Street, Suite 210
Phoenix, Arizona 85018



CURVE TABLE					
CURVE #	RADIUS	LENGTH	DELTA	CHORD DIRECTION	CHORD LENGTH
C7	264.00'	91.16'	19°47'07"	S 20°48'15" E	90.71'
C8	385.00'	30.30'	4°30'33"	S 8°39'25" E	30.29'
C10	460.00'	62.60'	7°47'51"	N 38°05'17" W	62.55'
C11	520.00'	70.77'	7°47'51"	N 38°05'17" W	70.71'
C19	490.00'	66.68'	7°47'51"	N 38°05'17" W	66.63'
C20	6.00'	18.85'	180°00'01"	N 59°18'11" E	12.00'
C66	350.00'	453.49'	74°14'15"	S 6°25'20" W	422.43'
C67	6.00'	18.85'	180°00'00"	N 46°27'33" W	12.00'
C68	6.00'	18.85'	180°00'00"	S 83°05'33" E	12.00'
C69	6.00'	18.85'	180°00'00"	S 59°18'12" W	12.00'



LINE TABLE		
LINE #	DIRECTION	LENGTH
L21	S30°41'48"E	82.85'
L22	S75°55'54"E	42.30'
L23	S59°18'12"W	141.58'
L24	N9°18'34"E	45.96'
L25	N30°41'48"W	65.18'
L26	N10°54'41"W	56.55'
L27	N47°18'29"W	29.54'
L28	N0°17'51"E	50.00'
L29	N47°54'12"E	29.54'
L34	N34°11'21"W	86.82'
L35	N48°00'48"E	60.00'
L36	S34°11'21"E	11.33'
L37	S79°11'21"E	28.28'
L38	S34°11'21"E	70.00'
L39	S10°48'39"W	28.28'
L64	S89°42'09"E	54.19'
L65	N30°41'48"W	177.64'
L66	N55°48'39"E	50.00'
L75	N43°32'27"E	123.95'
L76	S43°32'27"W	123.95'



Map of Dedication

Goodyear, Arizona

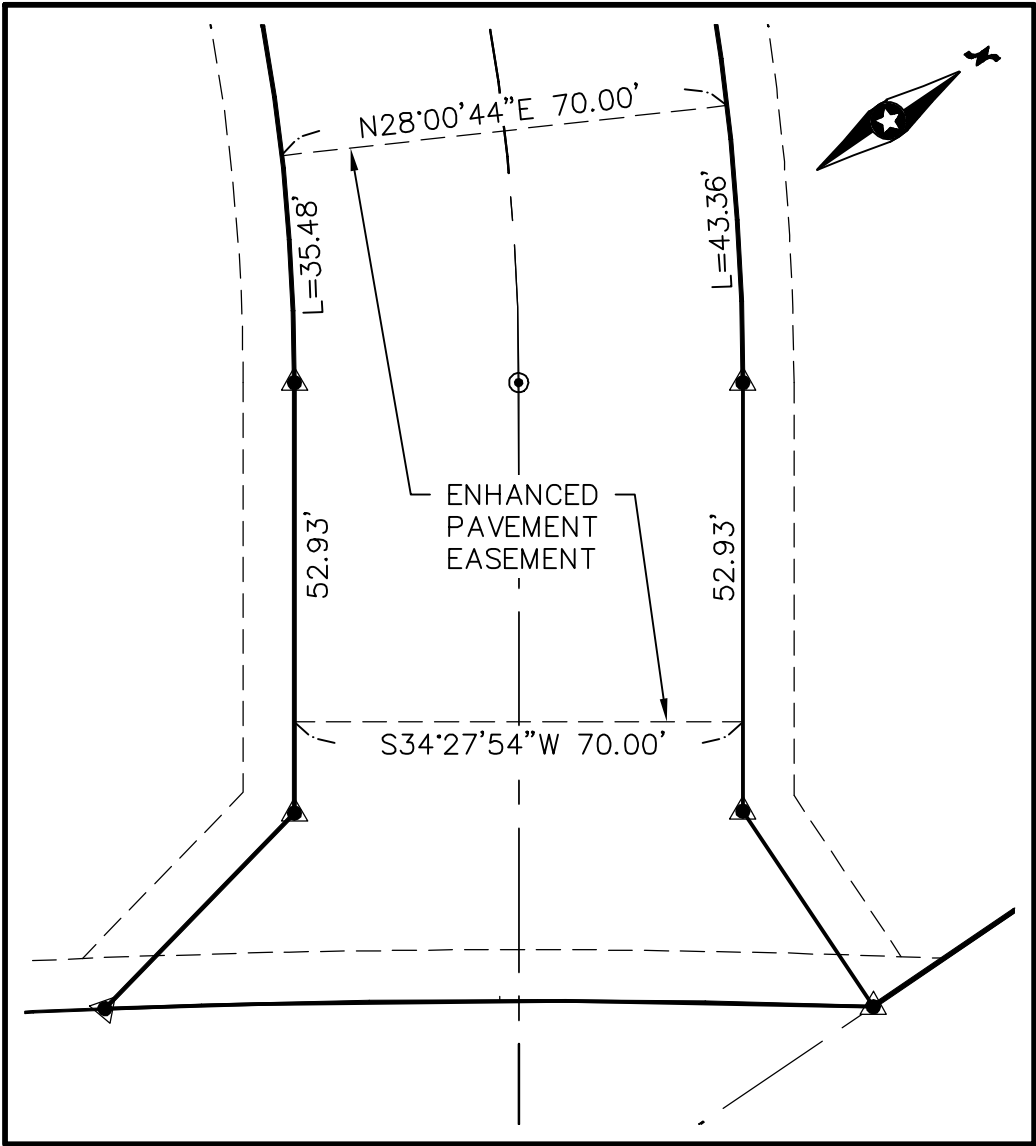
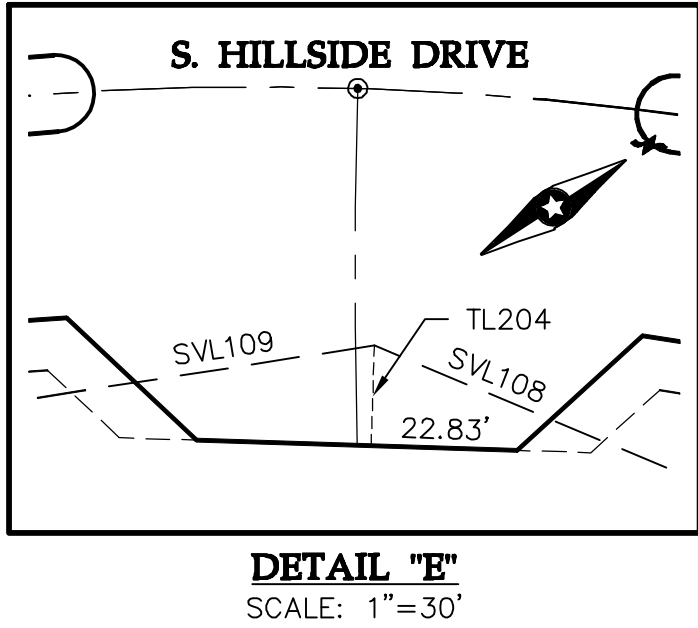
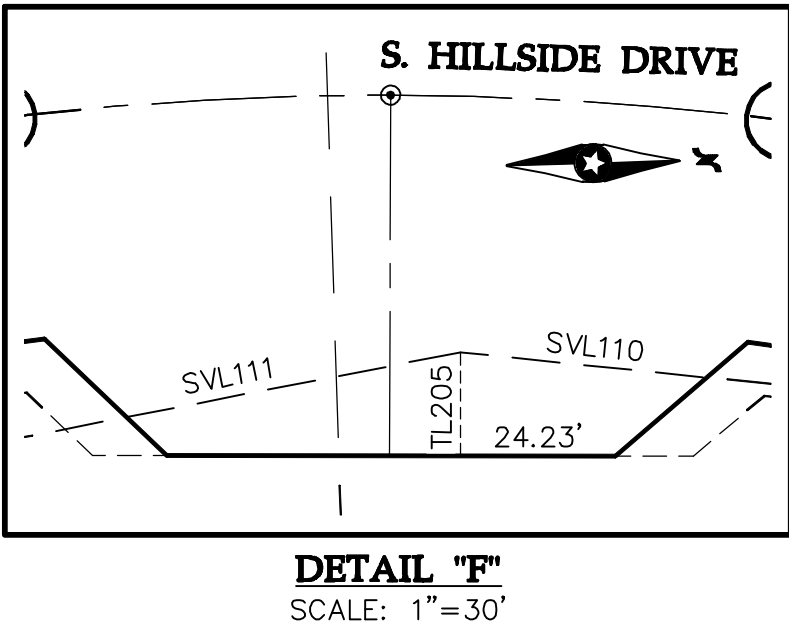
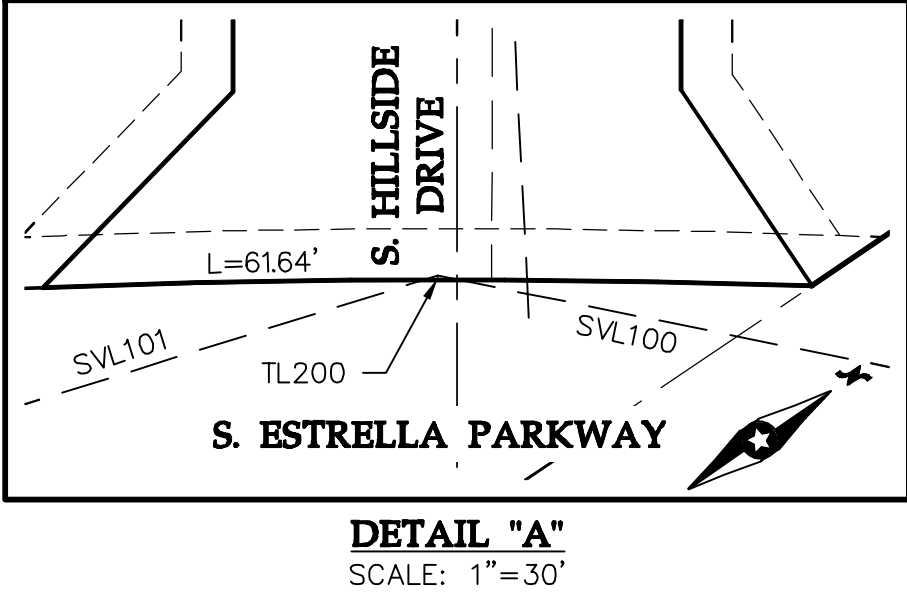
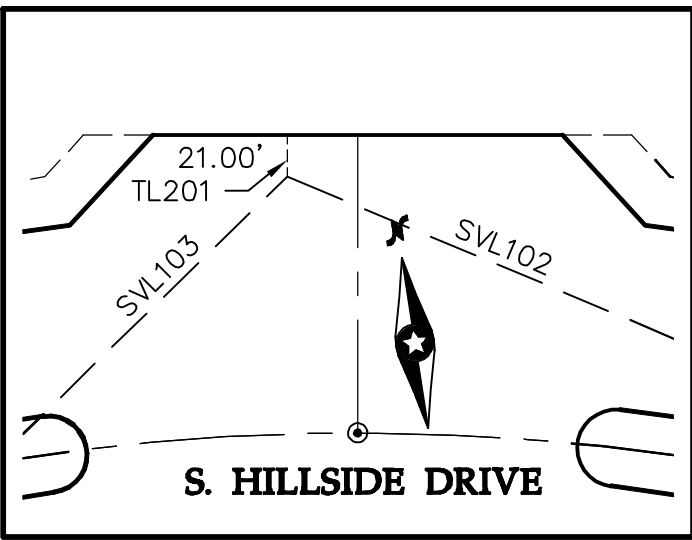
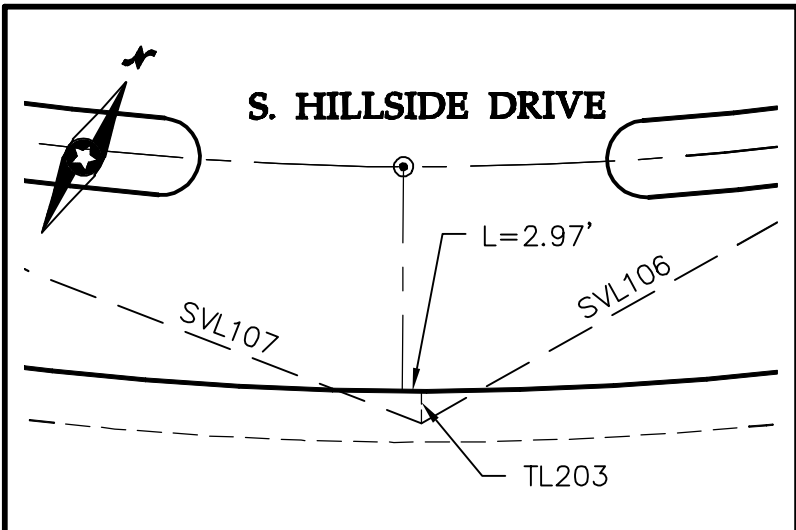
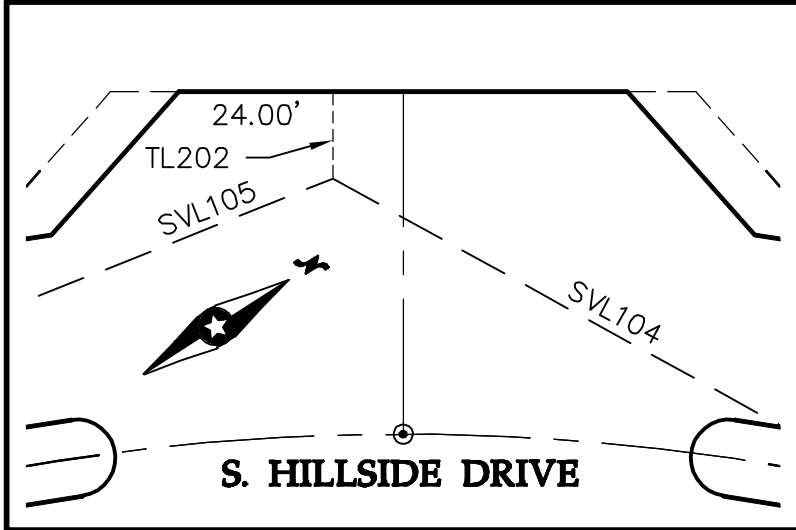
Right of Way
Plan Sheet

Date: 01/15/2018
Drawing No: FP05
Sheet No: 5 of 8

0009342MODF02.dwg

SIGHT VISIBILITY LINE TABLE			
LINE #	DIRECTION	LENGTH	
SVL100	S45°55'00"W	539.31'	
SVL101	N17°08'49"E	722.77'	
SVL102	N58°26'23"W	281.16'	
SVL103	S54°41'40"W	440.00'	
SVL104	N61°50'23"E	335.00'	
SVL105	S11°13'37"W	440.00'	
SVL106	N31°25'09"E	391.00'	
SVL107	N81°59'13"E	319.00'	
SVL108	N55°53'13"E	440.00'	
SVL109	S24°19'40"W	335.00'	
SVL110	N7°27'29"E	440.00'	
SVL111	S9°17'28"E	335.00'	

TIE LINE TABLE			
LINE #	DIRECTION	LENGTH	
TL200	S55°37'21"E	0.64'	
TL201	S8°52'37"W	6.53'	
TL202	S57°01'37"E	13.57'	
TL203	N29°10'44"W	5.00'	
TL204	N55°01'44"W	15.65'	
TL205	S88°15'24"E	16.16'	



Westwood

Westwood Professional Services, Inc.
6909 East Greenway Parkway, Suite 250
Scottsdale, AZ 85254

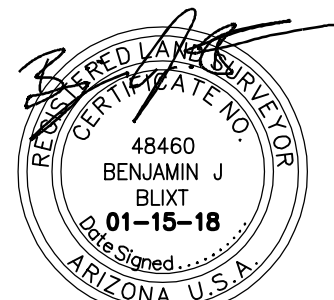
Phone (480) 747-6558
Fax (480) 376-8025

westwoodps.com

Designed: WPS
Checked: BJB
Drawn: KWD
Project Number: 000934200

Prepared for:

NNP III-EMR 3, LLC
5090 North 40th Street, Suite 210
Phoenix, Arizona 85018



Map of Dedication

Goodyear, Arizona

Easement Plan Sheet

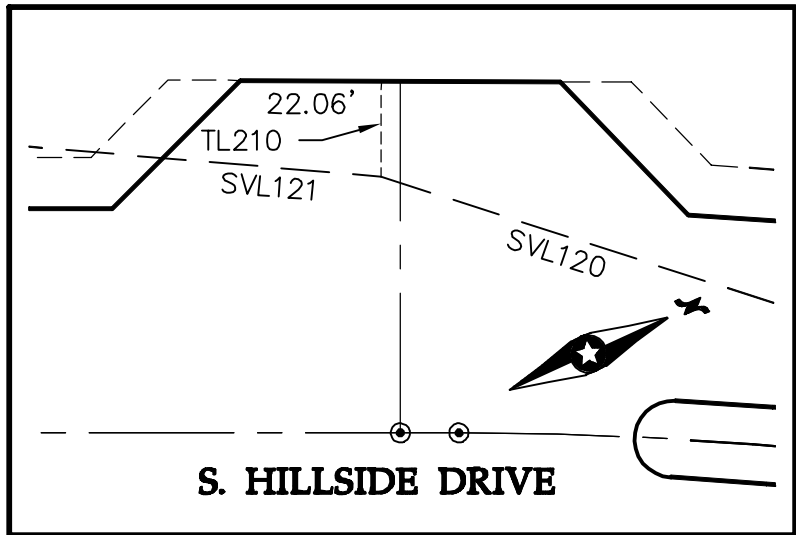
Date: 01/15/2018

Drawing No: FP06

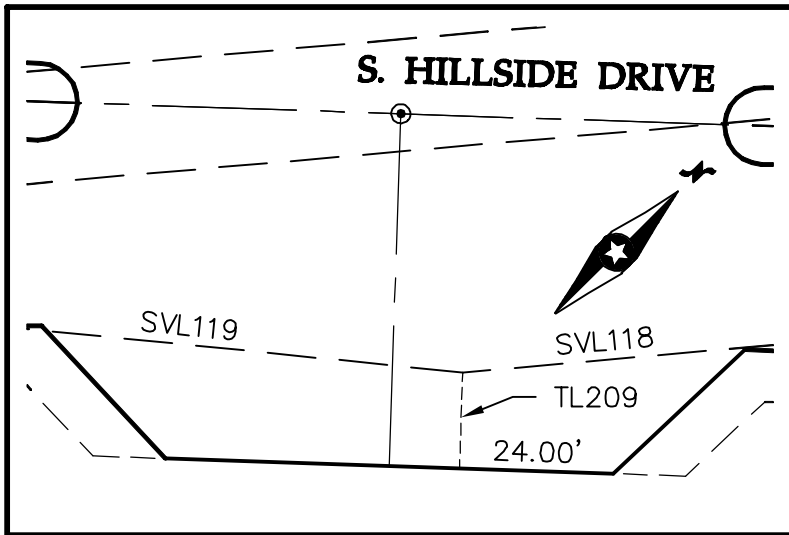
Sheet No: 6 of 8

0009342MODF03.dwg

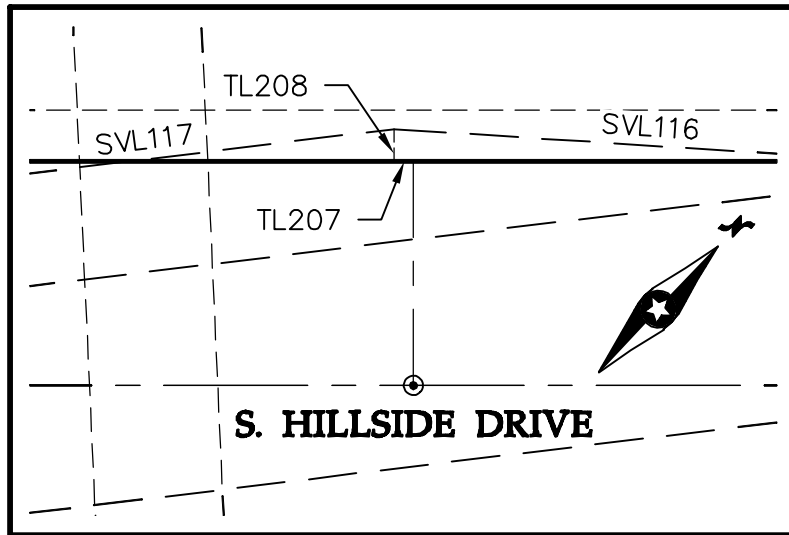
SIGHT VISIBILITY LINE TABLE			SIGHT VISIBILITY LINE TABLE		
LINE #	DIRECTION	LENGTH	LINE #	DIRECTION	LENGTH
SVL112	S13°06'25"E	440.00'	SVL121	S29°22'37"W	440.00'
SVL113	N38°54'44"E	335.00'	SVL122	N72°01'54"E	335.00'
SVL114	N42°23'23"E	335.00'	SVL123	S31°09'27"W	440.00'
SVL115	N39°36'14"E	440.00'	SVL124	N60°59'04"E	440.00'
SVL116	N50°12'45"E	335.00'	SVL125	N46°11'37"E	335.00'
SVL117	S39°35'59"W	440.00'	SVL126	N20°43'51"E	335.00'
SVL118	S39°35'59"W	440.00'	SVL127	N28°42'13"E	440.00'
SVL119	N50°16'45"E	335.00'	SVL128	S11°21'31"W	440.00'
SVL120	S42°24'37"W	335.00'	SVL129	N39°48'35"E	335.00'



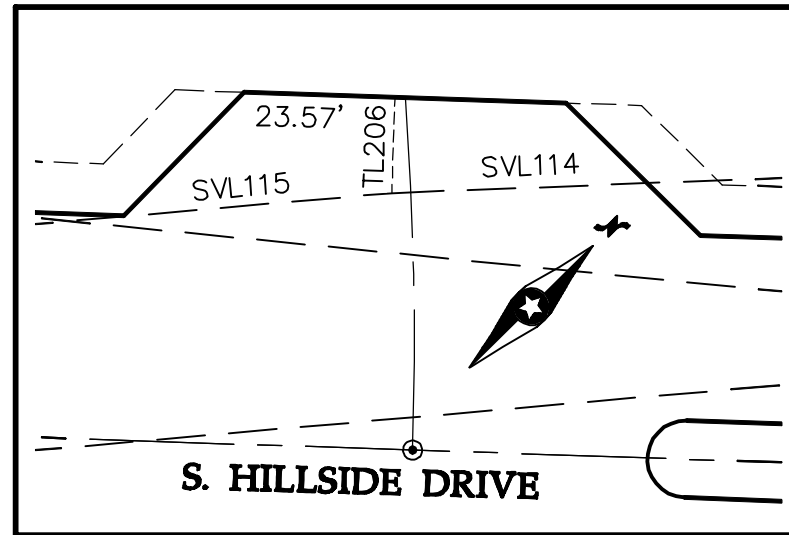
DETAIL "K"
SCALE: 1"=30'



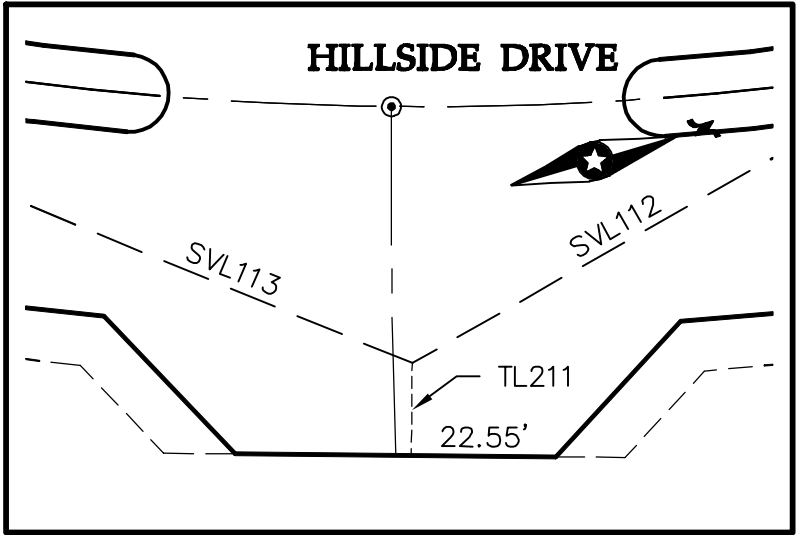
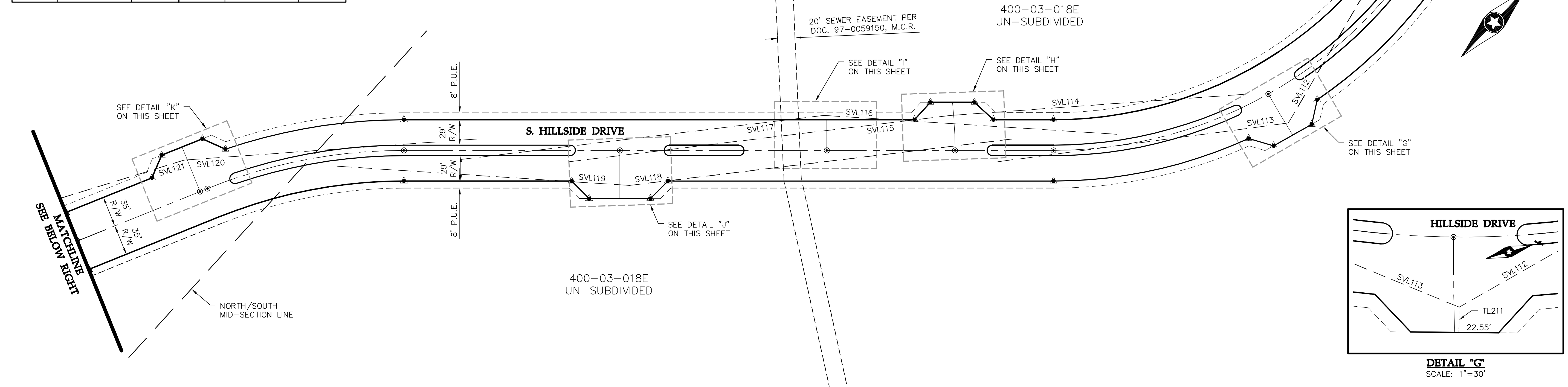
DETAIL "T"
SCALE: 1"=30'



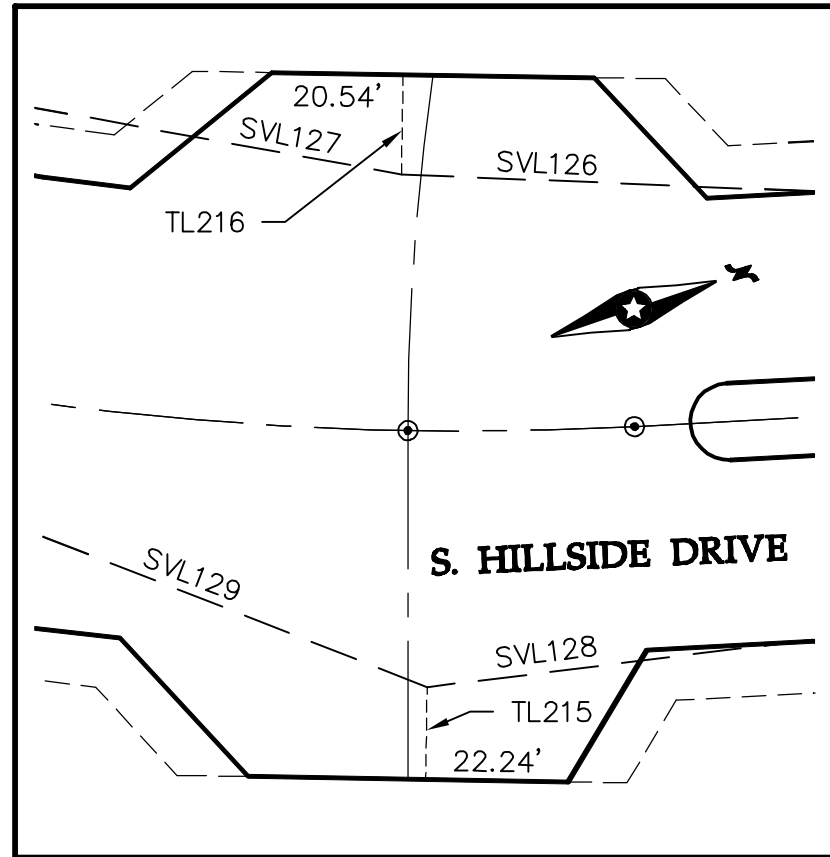
DETAIL "T"
SCALE: 1"=30'



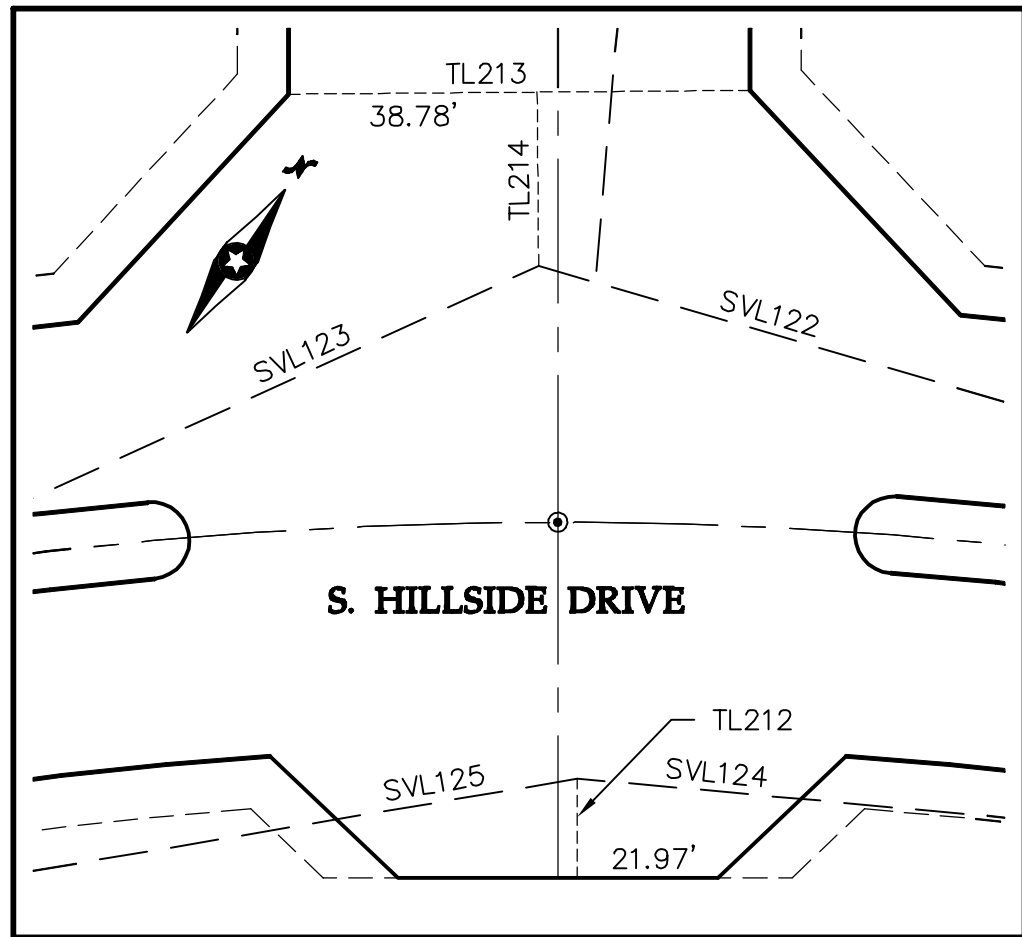
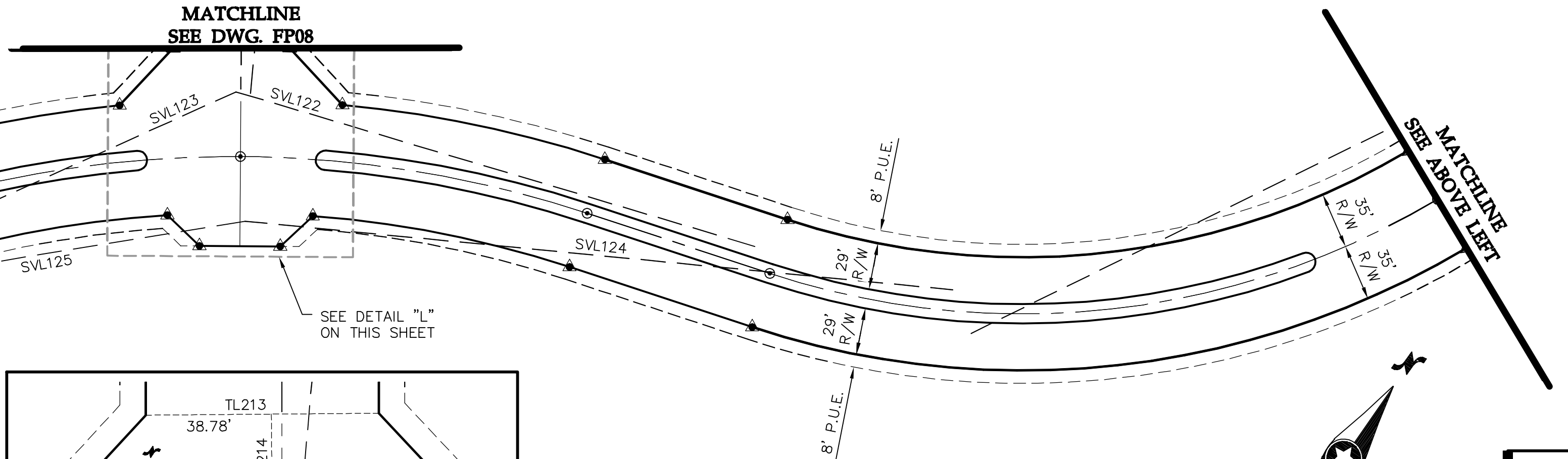
DETAIL "H"
SCALE: 1"=30'



DETAIL "G"
SCALE: 1"=30'

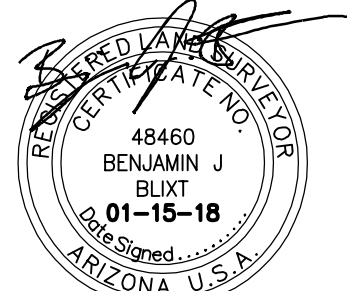
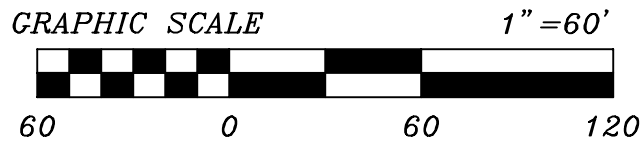


DETAIL "M"
SCALE: 1"=30'



DETAIL "L"
SCALE: 1"=30'

TIE LINE TABLE		
LINE #	DIRECTION	LENGTH
TL206	S43°30'02"E	14.95'
TL207	S46°31'05"W	3.00'
TL208	S43°28'55"E	5.00'
TL209	N43°28'55"W	15.00'
TL210	S65°13'07"E	14.91'
TL211	N72°55'57"W	14.42'
TL212	S34°18'08"E	15.46'
TL213	N55°20'33"E	72.00'
TL214	N34°39'27"W	27.12'
TL215	N70°40'36"W	14.42'
TL216	S70°42'20"E	15.60'



Map of Dedication

Goodyear, Arizona

Easement Plan Sheet

Date: 01/15/2018
Drawing No: FP07
Sheet No: 7 of 8

Westwood

Westwood Professional Services, Inc.
6909 East Greenway Parkway, Suite 250
Scottsdale, AZ 85254

Phone (480) 747-6558
Fax (480) 376-8025

westwoodps.com

Designed: WPS
Checked: BJB
Drawn: KWD
Project Number: 000934200

Prepared for:

NNP III-EMR 3, LLC
5090 North 40th Street, Suite 210
Phoenix, Arizona 85018

Westwood

Westwood Professional Services, Inc.
6909 East Greenway Parkway, Suite 250
Scottsdale, AZ 85254

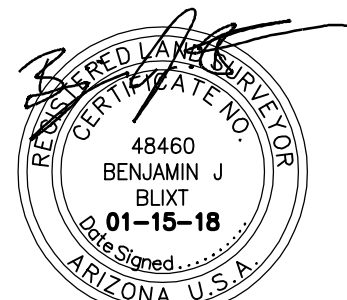
Phone (480) 747-6558
Fax (480) 376-8025

westwoodps.com

Designed: WPS
Checked: BJB
Drawn: KWD
Project Number: 000934200

Prepared for:

NNP III-EMR 3, LLC
5090 North 40th Street, Suite 210
Phoenix, Arizona 85018



EXPIRES 09/30/20

Map of Dedication

Goodyear, Arizona

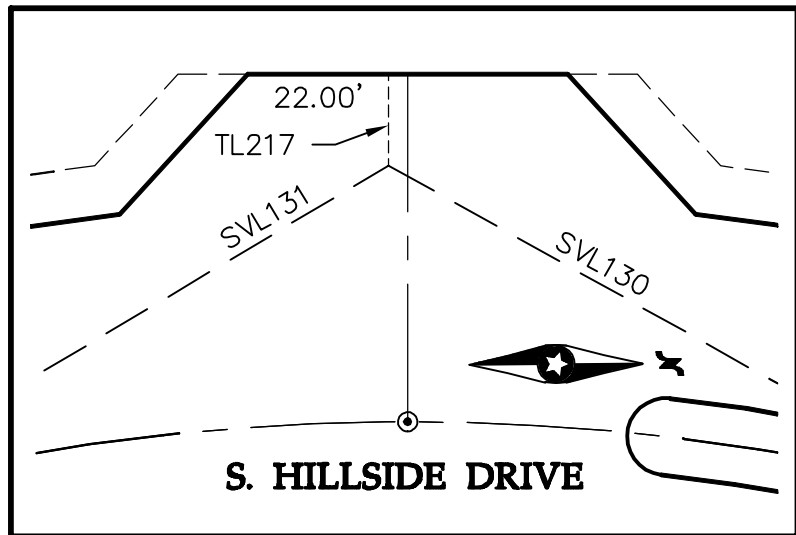
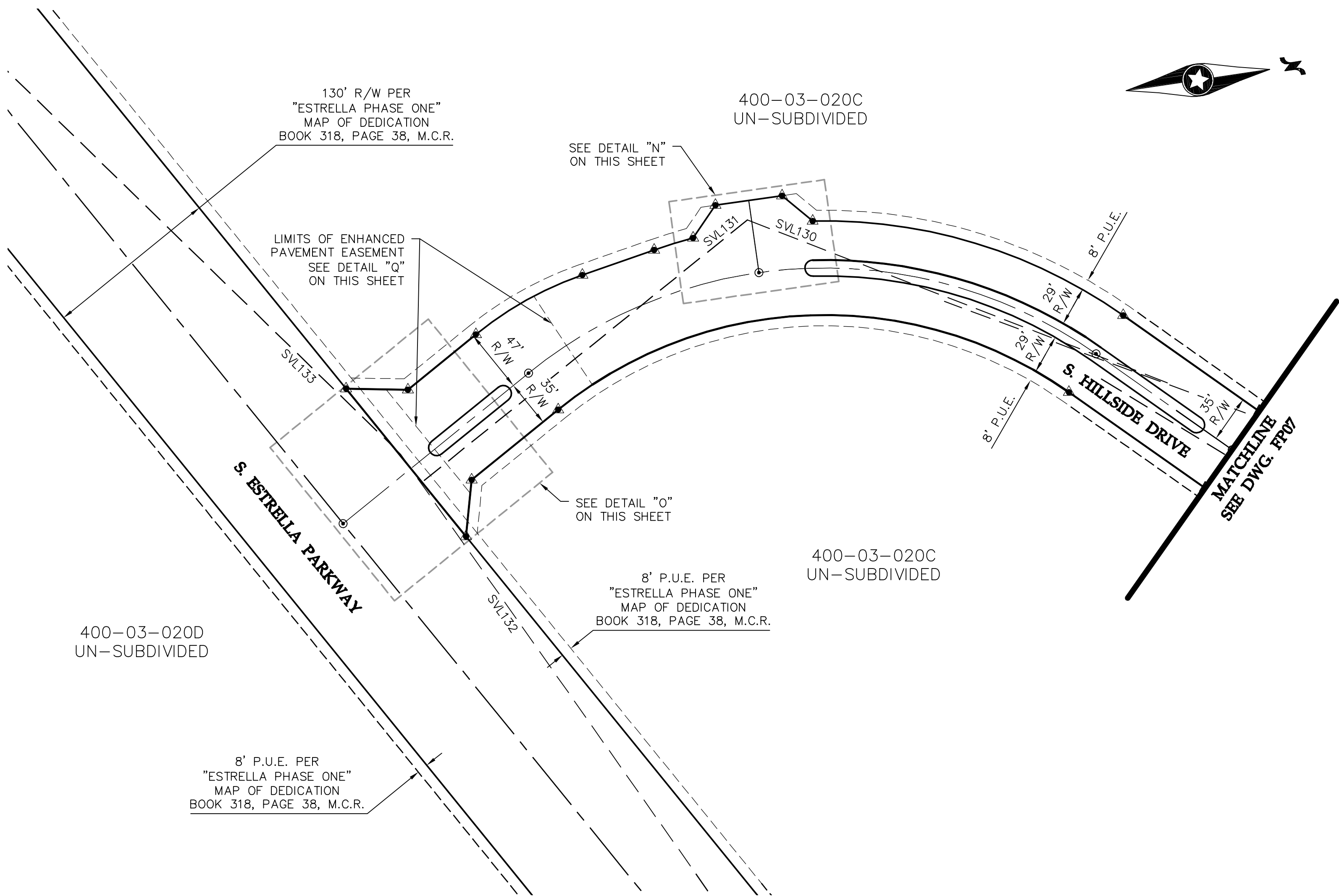
Easement Plan Sheet

Date: 01/15/2018

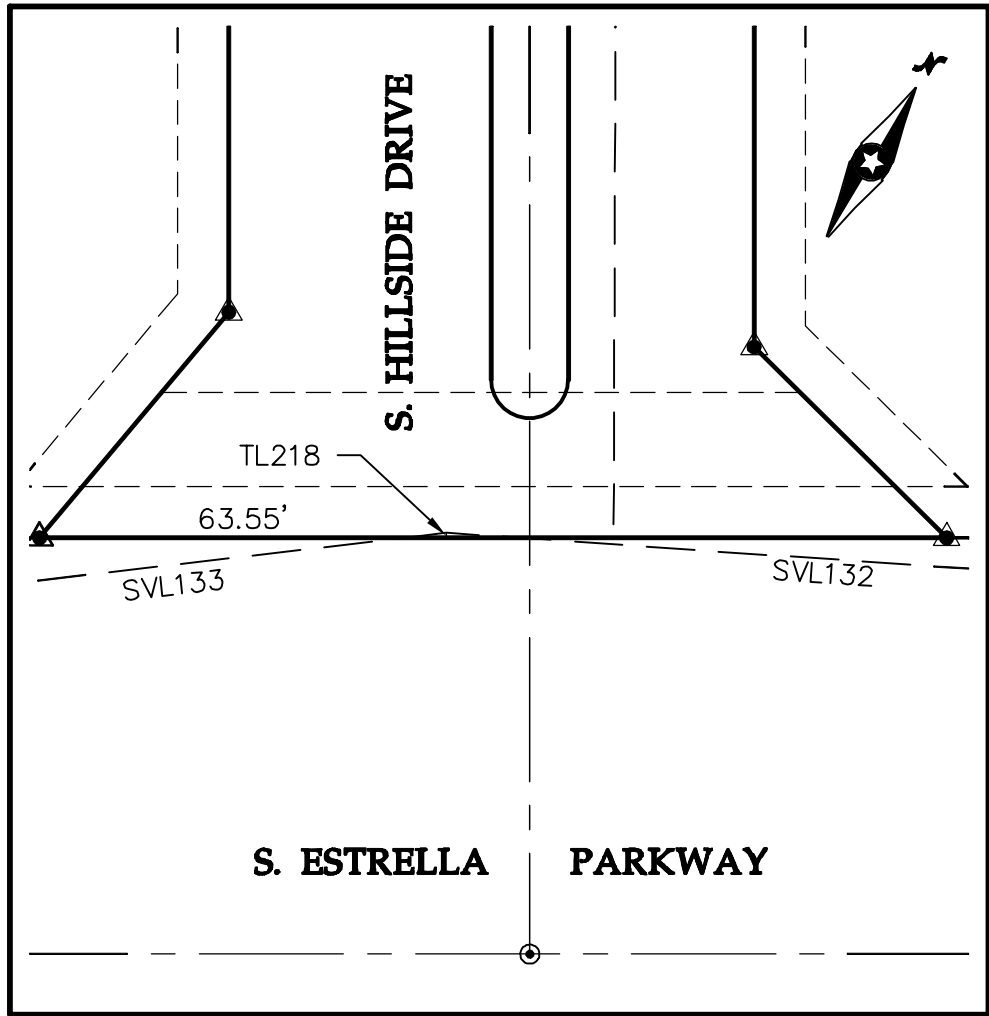
Drawing No: FP08

Sheet No: 8 of 8

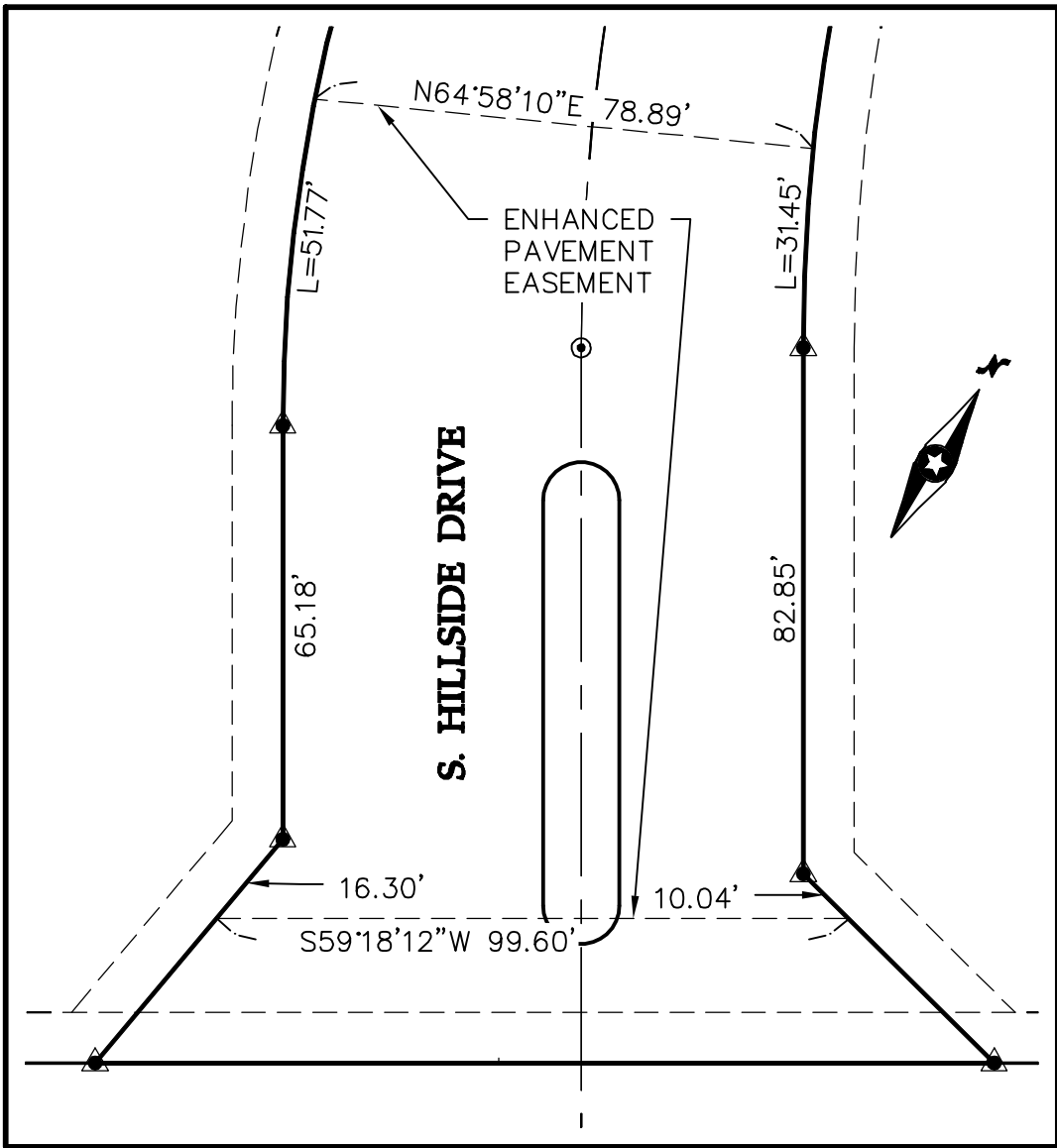
0009342MODF03.dwg



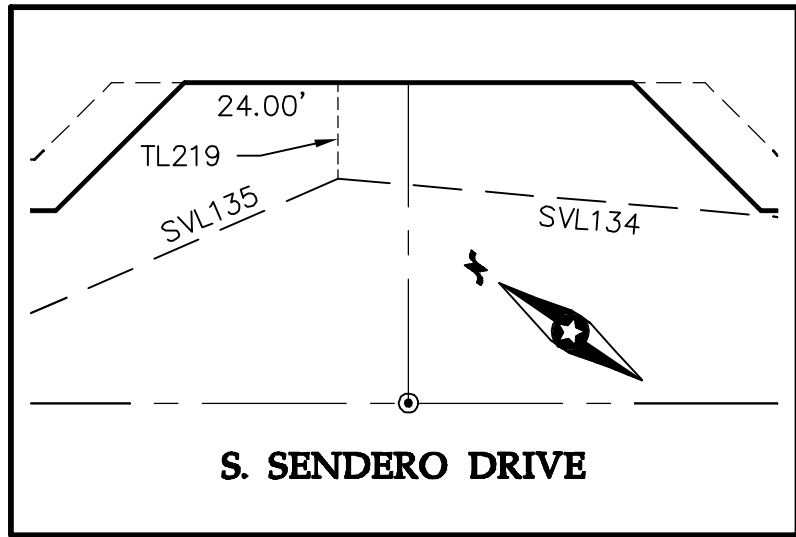
DETAIL "N"
SCALE: 1"=30'



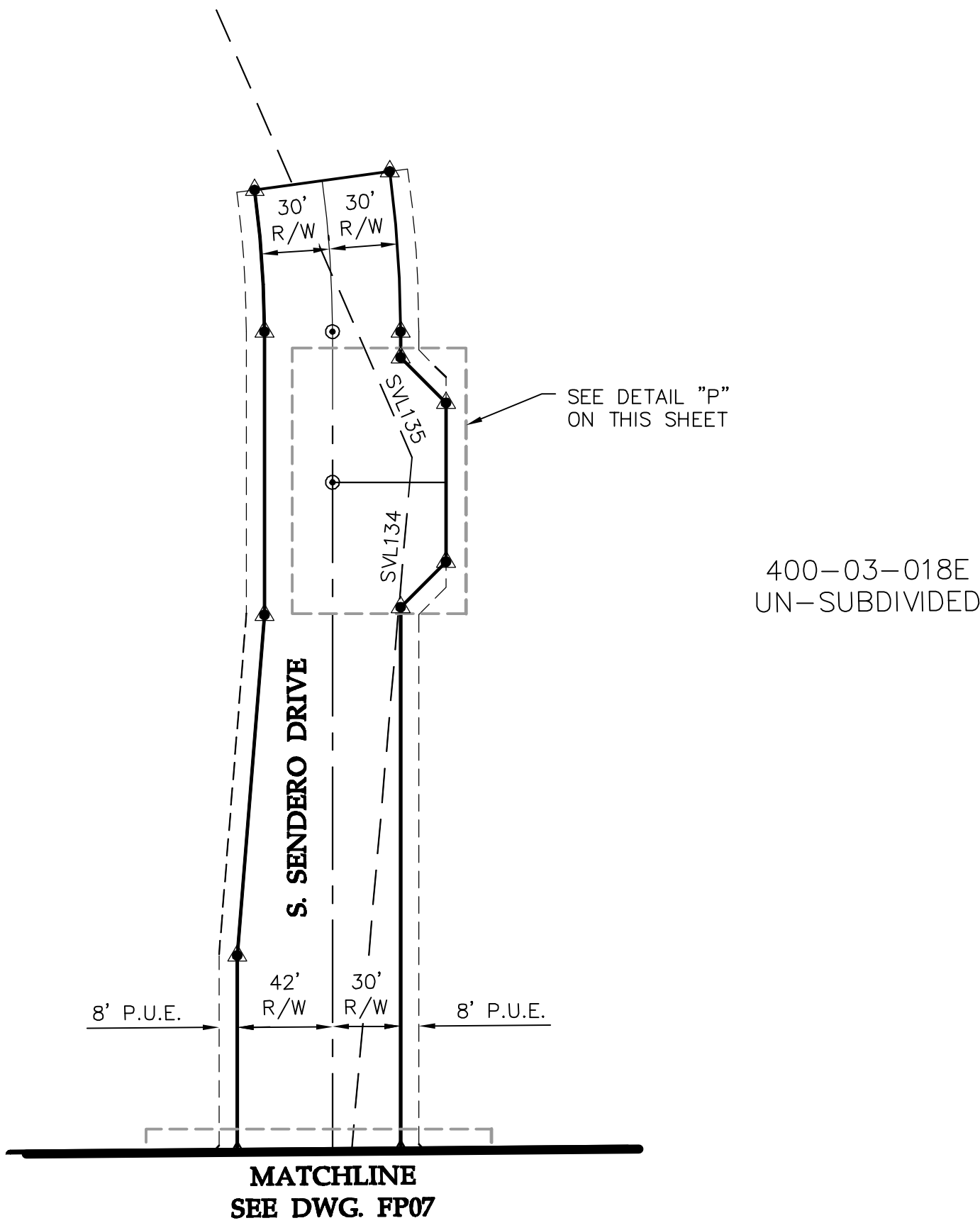
DETAIL "O"
SCALE: 1"=30'



DETAIL "Q"
SCALE: 1"=30'



DETAIL "P"
SCALE: 1"=30'



SIGHT VISIBILITY LINE TABLE		
LINE #	DIRECTION	LENGTH
SVL130	N29°33'15"E	335.00'
SVL131	S30°29'57"E	308.77'
SVL132	N63°14'31"E	531.35'
SVL133	N52°36'52"E	694.73'
SVL134	N29°13'23"W	335.00'
SVL135	N57°48'26"W	415.00'

TIE LINE TABLE		
LINE #	DIRECTION	LENGTH
TL217	S89°42'09"E	14.20'
TL218	S30°41'48"E	0.78'
TL219	N55°48'39"E	15.00'

