



CITY OF
Goodyear

A large, circular sculpture made of metal rings and a grid, covered in blue and clear plastic bottles, set against a dark blue sky. The sculpture is composed of several concentric metal rings connected by a grid. The grid is densely packed with blue and clear plastic bottles, creating a textured, almost mosaic-like effect. The bottles are arranged in a way that they catch the light, giving the sculpture a shimmering appearance. The background is a solid, dark blue sky, which makes the sculpture stand out prominently.

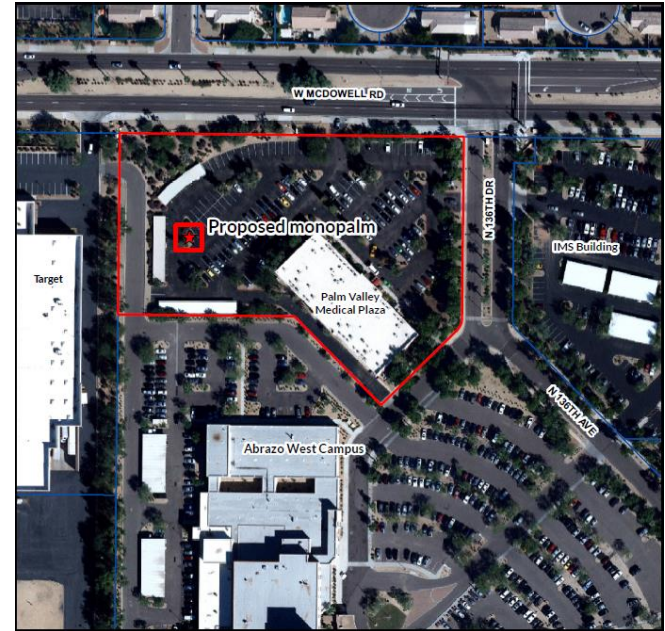
PHO - Palmilla Special Use Permit

PHO - Palmilla



SPECIAL USE PERMIT

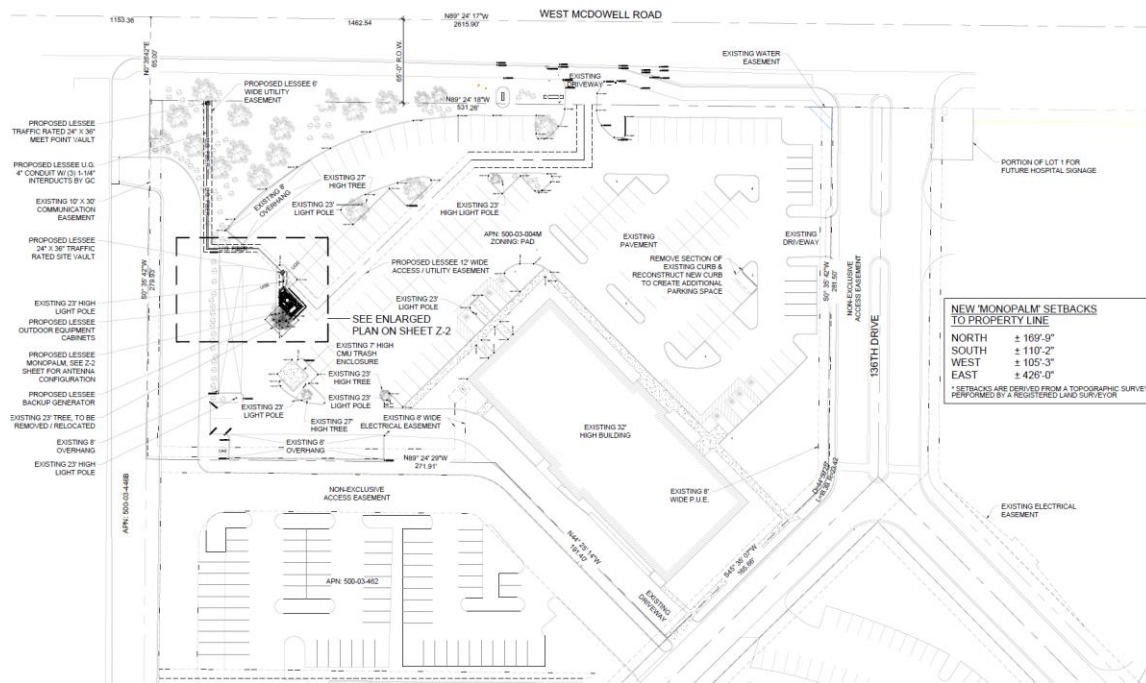
- Monopalm Cell tower
- Proposed within the Palm Valley Medical Plaza Parking Lot
- One space will be utilized and replaced on the site
- Special Use Permits are required for new wireless communication facilities



PHO - Palmilla



SITE PLAN



PHO - Palmilla



PHOTO SIMULATIONS

EXISTING VIEW 1
LOOKING SOUTHWEST



PROPOSED VIEW 1
LOOKING SOUTHWEST



PROPOSED INSTALLATION
OF A 65' MONOPALM
WITH ANTENNA ARRAY.
ADDITION OF EQUIPMENT
COMPOUND,
SURROUNDED BY A 8'
CMU SCREENING WALL.

PHO - Palmilla



PHOTO SIMULATIONS

EXISTING VIEW 2
LOOKING SOUTH



YOUNG DESIGN CORP. - 10245 E. VIA LINDA, STE. 211 - SCOTTSDALE, AZ 85258 - (480) 451-9609

4/5

PROPOSED VIEW 2
LOOKING SOUTH

PROPOSED INSTALLATION
OF A 65' MONOPALM
WITH ANTENNA ARRAY.
ADDITION OF EQUIPMENT
COMPOUND,
SURROUNDED BY A 8"
CMU SCREENING WALL.



YOUNG DESIGN CORP. - 10245 E. VIA LINDA, STE. 211 - SCOTTSDALE, AZ 85258 - (480) 451-9609

5/5

Questions?

