





CITY HALL ENTRANCE ENHANCEMENTS

COUNCIL WORK SESSION - JULY 11, 2016

Regis Reed, Project Manager
Guylene Ozlanski, Arts & Culture Coordinator

City Hall Entrance Enhancements

- Review Proposed Design for City Hall
- Discuss Entrance Enhancements
- Solicit Council Feedback on the Proposed Elements of the Project

City Hall Entrance Enhancements



Project History

- FY14 City Hall identified for entry enhancements.
- November 2014 Arts & Culture Commission approve the artist Stephen Fairfield.
- November 2014 Council update on signage and enhancements.
- March 2015 City purchases artist intellectual property.



Artist Stephen Fairfield Rendering

City Hall Entrance Enhancements



Project Goals

- Improve the accessibility and identification of the entrance to City Hall for visitors.
- Provide an aesthetic improvement that creates a more welcoming presence.
- Impart an attractive art experience for the visitors at City Hall.



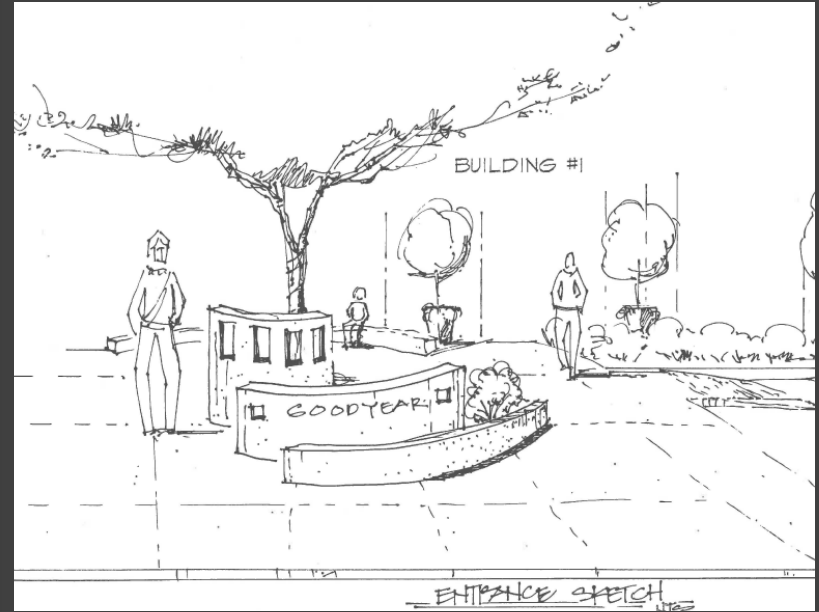
Artist Stephen Fairfield Rendering

City Hall Entrance Enhancements



Project Elements

- Water Harvest Garden
- Entry Identification Signage
- Sculptural Seating
- Architectural Lighting
- Vegetation



Proposed Entrance Enhancement

City Hall Entrance Enhancements



Hand-drawn site plan of a courtyard area, showing various features and annotations:

- Orientation:** A north arrow points upwards, labeled 'N'.
- Top Right Area:**
 - EX. TREES PERMAN - C
 - RECYCLED W/ MORTAR
 - PRECAST P (TYPICAL) UP LIGHTS
 - NEW PLANT & DG.
- Central Area:**
 - WATER HARVEST AREA
 - RESERVED PARKING SIGN SEE DETAIL 1/A-12
 - CMU WALL HEIGHT AS NOTED
 - NEW PLANTS, DG, & IRRIGATION
 - RESERVED PARKING SIGN SEE DETAIL 1/A-12
 - TREE CRATE
 - KNOW BOX
- Bottom Area:**
 - REMOVE EX. PLANTS & ADD NEW ONES
 - PROTECT EX TREE & AREA LIGHT
 - COB. SIGN
 - PLANTER
 - NEW PLANTS
- Other Annotations:**
 - 3'-0" EQ.
 - DOWN
 - 17 A-12
 - 3 A-12
 - 15 A-12
 - 1/2 SLOPE MAX. TYP.
 - FINISH
 - LIMITS OF BLDG. CONSTRUCTION
 - 1/2 SLOPE MAX. TYP.

Fiscal Analysis

Project	Funding Source	Project Status	Original Budget	Revised Budget
City Hall Signage: Phase II	FY15 Budgeted Signage Supplemental	<u>Complete</u>	\$30,000	\$30,000
City Hall Signage: Phase I	FY14 Phase One City Hall Entry Improvement Supplemental	Pending	\$75,000	\$59,400
Landscaping	FY15 Budgeted Soft-Scape Supplemental	Pending	\$10,000	\$25,000
Public Artwork	FY15 Public Art Fund	Pending	\$70,000	\$20,000
	Project Total		\$185,000	\$134,400

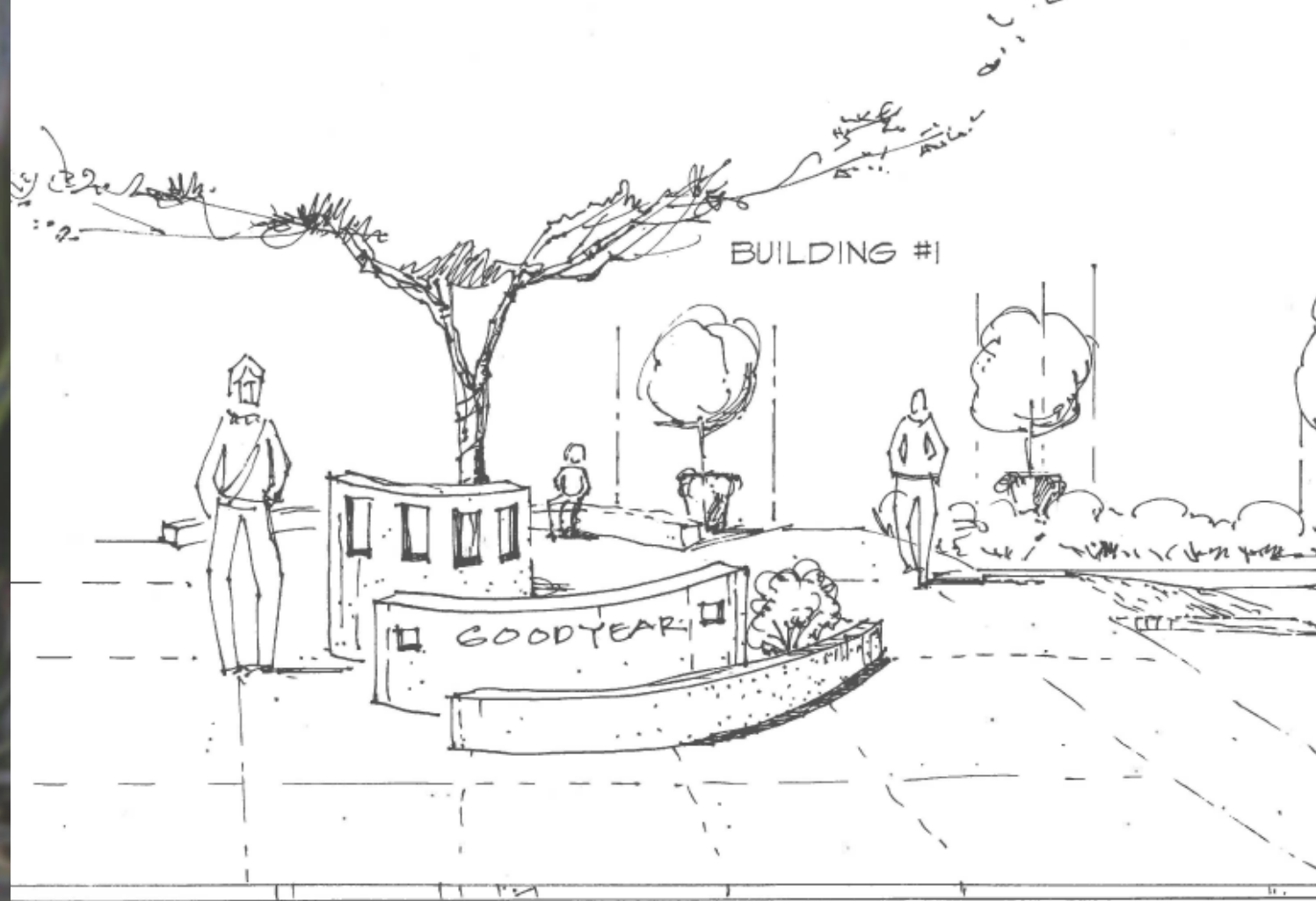
City Hall Entrance Enhancements



Discussion

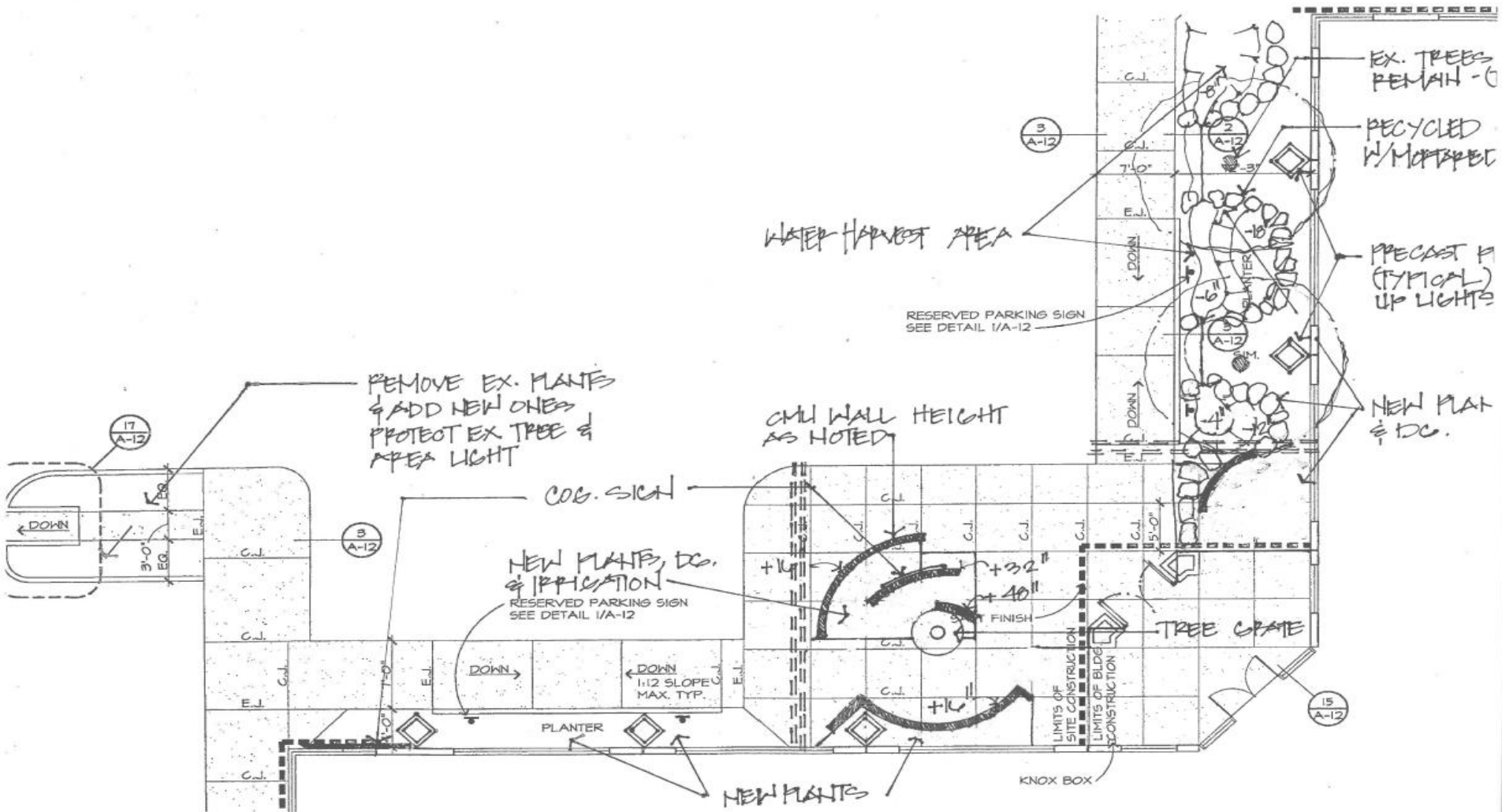
City Hall Entrance Enhancements





ENTRANCE SKETCH

1/25

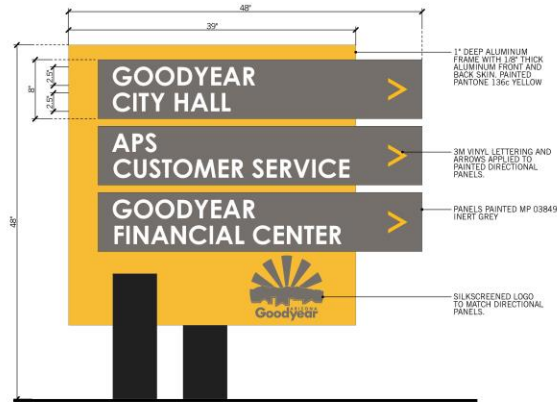




EXISTING SIGN



PROPOSED NEW SIGN



DIRECTIONAL ID

Scale: 1" = 1'



Gretchen Cherrill,
Owner / Designer

1205 North Miller Road
Tempe, Arizona 85281
480.966.6565
480.966.5668(f)
signs@airparksigns.com

trc | gc | 10-17-14

City of Goodyear



Scale:

Revisions: