

# EXHIBIT "A"

PREPARED FOR:

RP PV I, LLC

BY: SPK

DATE: FEB., 2015

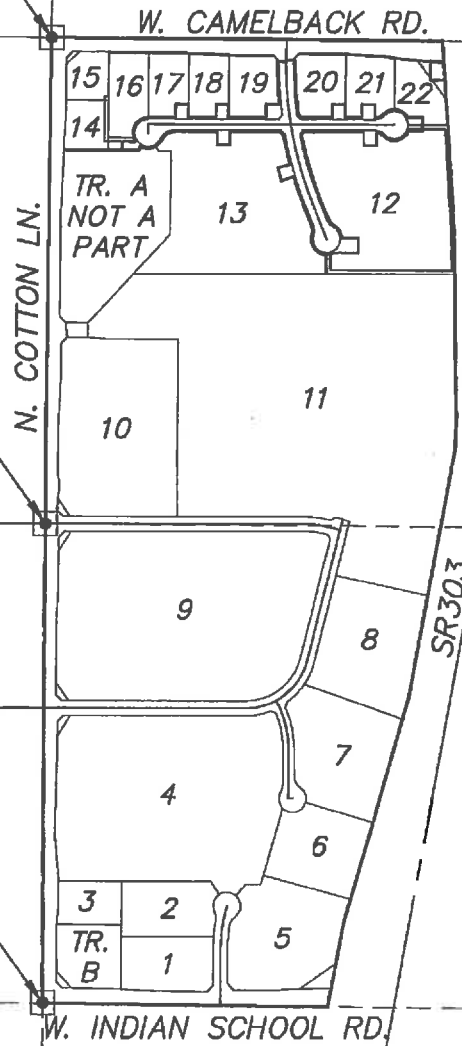
JOB NO. 19677

NW CORNER  
SECTION 24  
T 2N, R 2W

N. 1/4 COR.  
SECTION 24  
T 2N, R 2W

W. 1/4 COR.  
SECTION 24  
T 2N, R 2W

SW CORNER  
SECTION 24  
T 2N, R 2W



Scale: 1"=1000'

CENTER OF  
SECTION 24  
T 2N, R 2W

S. 1/4 COR.  
SECTION 24  
T 2N, R 2W



**Keogh Engineering, Inc.**

14150 W. MCDOWELL ROAD • GOODYEAR, ARIZONA 85395  
PHONE: (623) 535-7260 FAX: (623) 535-7262  
EMAIL: keogh@keoghengineering.com

CHECKED BY: DFK

DATE: FEB., 2015

SHEET NO 1

OF 8

Plot Date / Time: 02/27/15 01:31pm Layout Name: Sheet 1  
Full File Path: L:\19677 Perimeter West\Replot\Abandonment-Exhibit.dwg

AutoCad Version: 16.0  
Login Name: SHAUN

PREPARED FOR:

RP PV I, LLC

BY: SPKDATE: FEB., 2015JOB NO. 19677LEGAL DESCRIPTION (CONTINUED)

THAT PORTION OF WEST COLLEGE DRIVE AND NORTH 169TH AVENUE, PUBLIC UTILITY AND TEMPORARY DRAINAGE EASEMENTS AS SHOWN ON THE REPLAT OF PALM VALLEY PHASE VI PERIMETER WEST FINAL PLAT ACCORDING TO THE PLAT OR RECORD IN BOOK 1098 OF MAPS, PAGE 26 RECORDS OF MARICOPA COUNTY, ARIZONA BEING SITUATED IN A PORTION OF THE NORTHWEST QUARTER OF SECTION 24, TOWNSHIP 2 NORTH, RANGE 2 WEST OF THE GILA AND SALT RIVER BASE AND MERIDIAN, MARICOPA COUNTY, ARIZONA MORE PARTICULARLY DESCRIBED AS FOLLOWS

BEGINNING AT MARICOPA COUNTY HIGHWAY DEPARTMENT BRASS CAP IN HANDHOLE AT THE NORTHWEST CORNER OF SAID SECTION 24;  
 THENCE SOUTH 89°39'07" EAST ALONG THE NORTH LINE OF THE NORTHWEST QUARTER OF SAID SECTION 24, A DISTANCE OF 1291.89 FEET, FROM WHICH THE NORTH QUARTER CORNER OF SAID SECTION 24 BEARS SOUTH 89°39'07" EAST (BASIS OF BEARINGS), A DISTANCE OF 1348.15;  
 THENCE SOUTH 0°20'53" WEST, A DISTANCE OF 114.31 FEET TO THE TRUE POINT OF BEGINNING OF THE HEREIN DESCRIBED PARCEL;  
 THENCE SOUTH 89°39'07" EAST, A DISTANCE OF 50.00 FEET TO A POINT ON A CURVE, CONCAVE EASTERLY, HAVING A RADIUS OF 1950.00 FEET AND WHOSE CENTER BEARS SOUTH 89°39'07" EAST FROM THE LAST DESCRIBED POINT;  
 THENCE SOUTHERLY ALONG THE ARC OF SAID CURVE, THROUGH A CENTRAL ANGLE OF 8°40'07", AN ARC LENGTH OF 295.02 FEET TO A POINT OF NON-TANGENCY;  
 THENCE SOUTH 49°22'07" EAST, A DISTANCE OF 24.43 FEET;  
 THENCE SOUTH 90°00'00" EAST, A DISTANCE OF 168.42 FEET;  
 THENCE NORTH 0°00'00" EAST, A DISTANCE OF 72.20 FEET;  
 THENCE SOUTH 90°00'00" EAST, A DISTANCE OF 72.40 FEET;  
 THENCE SOUTH 0°00'00" WEST, A DISTANCE OF 72.20 FEET;  
 THENCE SOUTH 90°00'00" EAST, A DISTANCE OF 91.12 FEET;  
 THENCE NORTH 0°00'00" EAST, A DISTANCE OF 71.76 FEET;  
 THENCE SOUTH 90°00'00" EAST, A DISTANCE OF 71.76 FEET;  
 THENCE SOUTH 0°00'00" WEST, A DISTANCE OF 71.76 FEET TO A POINT OF A CURVE, CONCAVE NORTHWESTERLY, HAVING A RADIUS OF 65.00 FEET;  
 THENCE NORTHEASTERLY, ALONG THE ARC OF SAID CURVE, THROUGH A CENTRAL ANGLE OF 45°34'23", AN ARC LENGTH OF 51.70 FEET TO A POINT OF REVERSE CURVATURE, CONCAVE SOUTHERLY, HAVING A RADIUS OF 85.00 FEET;

CONTINUES ON SHEET 3

**Keogh Engineering, Inc.**

14150 W. MCDOWELL ROAD • GOODYEAR, ARIZONA 85395  
 PHONE: (623) 535-7260 FAX: (623) 535-7262  
 EMAIL: keogh@keoghengineering.com

CHECKED BY: DFKSHEET NO. 2DATE: FEB., 2015OF 8

Plot Date / Time: 02/27/15 01:29pm Layout Name: Sheet B  
 Full File Path: L:\19677 Perimeter West\Replat\Abandonment-Exhibit.dwg

AutoCad Version: 16.0  
 Login Name: SHAUN

PREPARED FOR:

RP PV I, LLC

BY: SPKDATE: FEB., 2015JOB NO. 19677LEGAL DESCRIPTION (CONTINUED)

THENCE EASTERLY ALONG THE ARC OF SAID CURVE, THROUGH A CENTRAL ANGLE OF 104°52'12", AN ARC LENGTH OF 155.58 FEET TO A POINT OF NON-TANGENCY;

THENCE SOUTH 90°00'00" EAST, A DISTANCE OF 80.45 FEET;

THENCE SOUTH 0°00'00" WEST, A DISTANCE OF 76.80 FEET;

THENCE NORTH 90°00'00" WEST, A DISTANCE OF 75.38 FEET TO A POINT ON A CURVE, CONCAVE NORTHERLY, HAVING A RADIUS OF 85.00 FEET AND WHOSE CENTER BEARS NORTH 66°51'45" WEST FROM THE LAST DESCRIBED POINT;

THENCE WESTERLY ALONG THE ARC OF SAID CURVE, THROUGH A CENTRAL ANGLE OF 112°26'07", AN ARC LENGTH OF 166.80 FEET TO A POINT OF REVERSE CURVATURE, CONCAVE SOUTHWESTERLY, HAVING A RADIUS OF 65.00 FEET;

THENCE NORTHWESTERLY ALONG THE ARC OF SAID CURVE, THROUGH A CENTRAL ANGLE OF 35°59'44", AN ARC LENGTH OF 40.84 FEET TO A POINT OF NON-TANGENCY;

THENCE SOUTH 0°00'00" WEST, A DISTANCE OF 70.77 FEET;

THENCE NORTH 90°00'00" WEST, A DISTANCE OF 71.68 FEET;

THENCE NORTH 0°00'00" EAST, A DISTANCE OF 71.68 FEET;

THENCE NORTH 90°00'00" WEST, A DISTANCE OF 331.30 FEET;

THENCE SOUTH 39°26'03" WEST, A DISTANCE OF 17.19 FEET TO A POINT ON A CURVE, CONCAVE NORTHEASTERLY, HAVING A RADIUS OF 1950.00 FEET AND WHOSE CENTER BEARS NORTH 78°25'19" EAST FROM THE LAST DESCRIBED POINT;

THENCE SOUTHEASTERLY ALONG THE ARC OF SAID CURVE, THROUGH A CENTRAL ANGLE OF 10°53'10", AN ARC LENGTH OF 370.50 FEET TO A POINT OF TANGENCY;

THENCE SOUTH 22°27'52" EAST, A DISTANCE OF 114.52 FEET TO A POINT OF A CURVE, CONCAVE NORTHEASTERLY, HAVING A RADIUS OF 65.00 FEET;

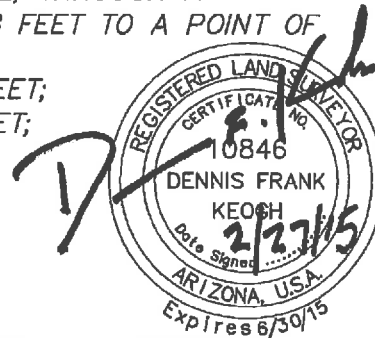
THENCE SOUTHEASTERLY ALONG THE ARC OF SAID CURVE, THROUGH A CENTRAL ANGLE OF 39°56'40", AN ARC LENGTH OF 45.32 FEET TO A POINT OF REVERSE CURVATURE, CONCAVE SOUTHWESTERLY, HAVING A RADIUS OF 85.00 FEET;

THENCE SOUTHEASTERLY, ALONG THE ARC OF SAID CURVE, THROUGH A CENTRAL ANGLE OF 59°02'12", AN ARC LENGTH OF 87.58 FEET TO A POINT OF NON-TANGENCY;

THENCE SOUTH 90°00'00" EAST, A DISTANCE OF 89.98 FEET;

THENCE SOUTH 0°00'00" WEST, A DISTANCE OF 80.00 FEET;

CONTINUES ON SHEET 4

**Keogh Engineering, Inc.**

14150 W. MCDOWELL ROAD • GOODYEAR, ARIZONA 85395  
PHONE: (623) 535-7260 FAX: (623) 535-7262  
EMAIL: keogh@keoghengineering.com

CHECKED BY: DFKSHEET NO. 3DATE: FEB., 2015OF 8

Plot Date / Time: 02/27/15 01:29pm Layout Name: Sheet 8  
Full File Path: L:\19677 Perimeter West\Replot\Abandonment-Exhibit.dwg

AutoCad Version: 16.0  
Login Name: SHAUN

PREPARED FOR:

RP PV I, LLC

BY: SPKDATE: FEB., 2015JOB NO. 19677LEGAL DESCRIPTION (CONTINUED)

THENCE NORTH 90°00'00" WEST, A DISTANCE OF 134.83 FEET TO A POINT ON A CURVE, CONCAVE NORTHEASTERLY, HAVING A RADIUS OF 85.00 FEET AND WHOSE CENTER BEARS NORTH 28°04'21" WEST FROM THE LAST DESCRIBED POINT;

THENCE NORTHWESTERLY, ALONG THE ARC OF SAID CURVE, THROUGH A CENTRAL ANGLE OF 135°33'09", AN ARC LENGTH OF 201.10 FEET TO A POINT OF REVERSE CURVATURE, CONCAVE SOUTHWESTERLY, HAVING A RADIUS OF 65.00 FEET;

THENCE NORTHWESTERLY ALONG THE ARC OF SAID CURVE, THROUGH A CENTRAL ANGLE OF 39°56'40", AN ARC LENGTH OF 45.32 FEET TO A POINT OF TANGENCY;

THENCE NORTH 22°27'52" WEST, A DISTANCE OF 114.52 FEET TO A POINT OF A CURVE, CONCAVE NORTHEASTERLY, HAVING A RADIUS OF 2050.00 FEET;

THENCE NORTHWESTERLY ALONG THE ARC OF SAID CURVE, THROUGH A CENTRAL ANGLE OF 4°49'47", AN ARC LENGTH OF 172.80 FEET TO A POINT OF NON-TANGENCY;

THENCE SOUTH 72°21'55" WEST, A DISTANCE OF 69.55 FEET;

THENCE NORTH 16°33'47" WEST, A DISTANCE OF 72.63 FEET;

THENCE NORTH 74°27'44" EAST, A DISTANCE OF 69.44 FEET TO A POINT ON A CURVE, CONCAVE NORTHEASTERLY, HAVING A RADIUS OF 2050.00 FEET AND WHOSE CENTER BEARS NORTH 74°19'27" EAST FROM THE LAST DESCRIBED POINT;

THENCE NORTHWESTERLY, ALONG THE ARC OF SAID CURVE, THROUGH A CENTRAL ANGLE OF 4°35'26", AN ARC LENGTH OF 164.25 FEET TO A POINT OF NON-TANGENCY;

THENCE NORTH 50°20'43" WEST, A DISTANCE OF 25.16 FEET;

THENCE NORTH 90°00'00" WEST, A DISTANCE OF 276.51 FEET;

THENCE SOUTH 0°00'00" WEST, A DISTANCE OF 69.88 FEET;

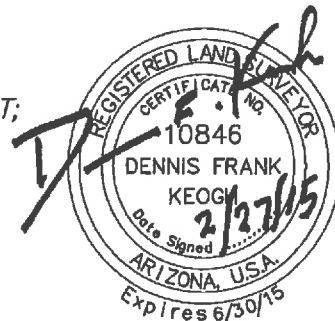
THENCE NORTH 90°00'00" WEST, A DISTANCE OF 69.88 FEET;

THENCE NORTH 0°00'00" EAST, A DISTANCE OF 69.88 FEET;

THENCE NORTH 90°00'00" WEST, A DISTANCE OF 239.99 FEET TO A POINT OF A CURVE, CONCAVE SOUTHEASTERLY, HAVING A RADIUS OF 65.00 FEET;

THENCE SOUTHWESTERLY ALONG THE ARC OF SAID CURVE, THROUGH A CENTRAL ANGLE OF 66°25'19", AN ARC LENGTH OF 75.35 FEET TO A POINT OF REVERSE CURVATURE, CONCAVE NORTHWESTERLY, HAVING A RADIUS OF 85.00 FEET; THENCE SOUTHWESTERLY ALONG THE ARC OF SAID CURVE, THROUGH A CENTRAL ANGLE OF 93°09'35", AN ARC LENGTH OF 138.21 FEET TO A POINT OF NON-TANGENCY;

CONTINUES ON SHEET 5

**Keogh Engineering, Inc.**

14150 W. MCDOWELL ROAD • GOODYEAR, ARIZONA 85395

PHONE: (623) 535-7260 FAX: (623) 535-7262

EMAIL: keogh@keoghengineering.com

CHECKED BY: DFKDATE: FEB., 2015SHEET NO 4OF 8

Plot Date / Time: 02/27/15 01:29pm Layout Name: Sheet 8  
Full File Path: L:\19677 Perimeter West\Replat\Abandonment-Exhibit.dwg

AutoCad Version: 16.0  
Login Name: SHAUN

PREPARED FOR:

RP PV I, LLC

BY: SPKDATE: FEB., 2015JOB NO. 19677LEGAL DESCRIPTION (CONTINUED)

THENCE SOUTH 26°44'17" WEST, A DISTANCE OF 24.95 FEET;  
 THENCE NORTH 89°39'07" WEST, A DISTANCE OF 93.43 FEET;  
 THENCE NORTH 0°20'53" EAST, A DISTANCE OF 49.37 FEET;  
 THENCE SOUTH 89°39'07" EAST, A DISTANCE OF 72.93 FEET TO A POINT ON A  
 CURVE, CONCAVE EASTERLY, HAVING A RADIUS OF 85.00 FEET AND WHOSE  
 CENTER BEARS NORTH 55°02'47" EAST FROM THE LAST DESCRIBED POINT;  
 THENCE NORTHERLY ALONG THE ARC OF SAID CURVE, THROUGH A CENTRAL  
 ANGLE OF 124°57'13", AN ARC LENGTH OF 185.37 FEET TO A POINT OF  
 TANGENCY;  
 THENCE SOUTH 90°00'00" EAST, A DISTANCE OF 147.84 FEET;  
 THENCE NORTH 0°00'00" EAST, A DISTANCE OF 71.56 FEET;  
 THENCE SOUTH 90°00'00" EAST, A DISTANCE OF 71.56 FEET;  
 THENCE SOUTH 0°00'00" WEST, A DISTANCE OF 71.56 FEET;  
 THENCE SOUTH 90°00'00" EAST, A DISTANCE OF 150.12 FEET;  
 THENCE NORTH 0°00'00" EAST, A DISTANCE OF 69.88 FEET;  
 THENCE SOUTH 90°00'00" EAST, A DISTANCE OF 69.88 FEET;  
 THENCE SOUTH 0°00'00" WEST, A DISTANCE OF 69.88 FEET;  
 THENCE SOUTH 90°00'00" EAST, A DISTANCE OF 206.22 FEET;  
 THENCE NORTH 0°00'00" EAST, A DISTANCE OF 71.68 FEET;  
 THENCE SOUTH 90°00'00" EAST, A DISTANCE OF 71.90 FEET TO A POINT ON A  
 CURVE, CONCAVE EASTERLY, HAVING A RADIUS OF 2050.00 FEET AND WHOSE  
 CENTERS BEARS NORTH 83°39'32" EAST FROM THE LAST DESCRIBED POINT;  
 THENCE NORTHERLY ALONG THE ARC OF SAID CURVE, THROUGH A CENTRAL  
 ANGLE OF 6°28'11", AN ARC LENGTH OF 231.48 FEET TO A POINT OF  
 NON-TANGENCY;  
 THENCE SOUTH 89°52'17" EAST, A DISTANCE OF 50.00 FEET TO A POINT ON A  
 CURVE, CONCAVE EASTERLY, HAVING A RADIUS OF 2000.00 FEET AND WHOSE  
 CENTER BEARS SOUTH 89°52'17" EAST FROM THE LAST DESCRIBED POINT;  
 THENCE NORTHERLY ALONG THE ARC OF SAID CURVE, THROUGH A CENTRAL  
 ANGLE OF 0°13'09", AN ARC LENGTH OF 7.65 FEET TO THE TRUE POINT OF  
 BEGINNING.

**Keogh Engineering, Inc.**

14150 W. MCDOWELL ROAD • GOODYEAR, ARIZONA 85395  
 PHONE: (623) 535-7260 FAX: (623) 535-7262  
 EMAIL: keogh@keoghengineering.com

CHECKED BY: DFK  
 DATE: FEB., 2015

SHEET NO 5  
 OF 8

Plot Date / Time: 02/27/15 01:29pm Layout Name: Sheet B  
 Full File Path: L:\19677 Perimeter West\Replot\Abandonment-Exhibit.dwg

AutoCad Version: 16.0  
 Login Name: SHAUN

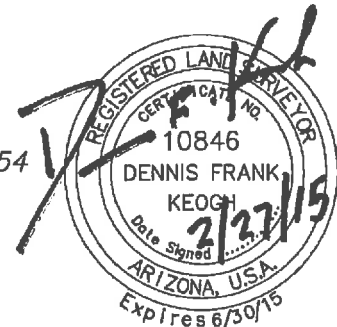
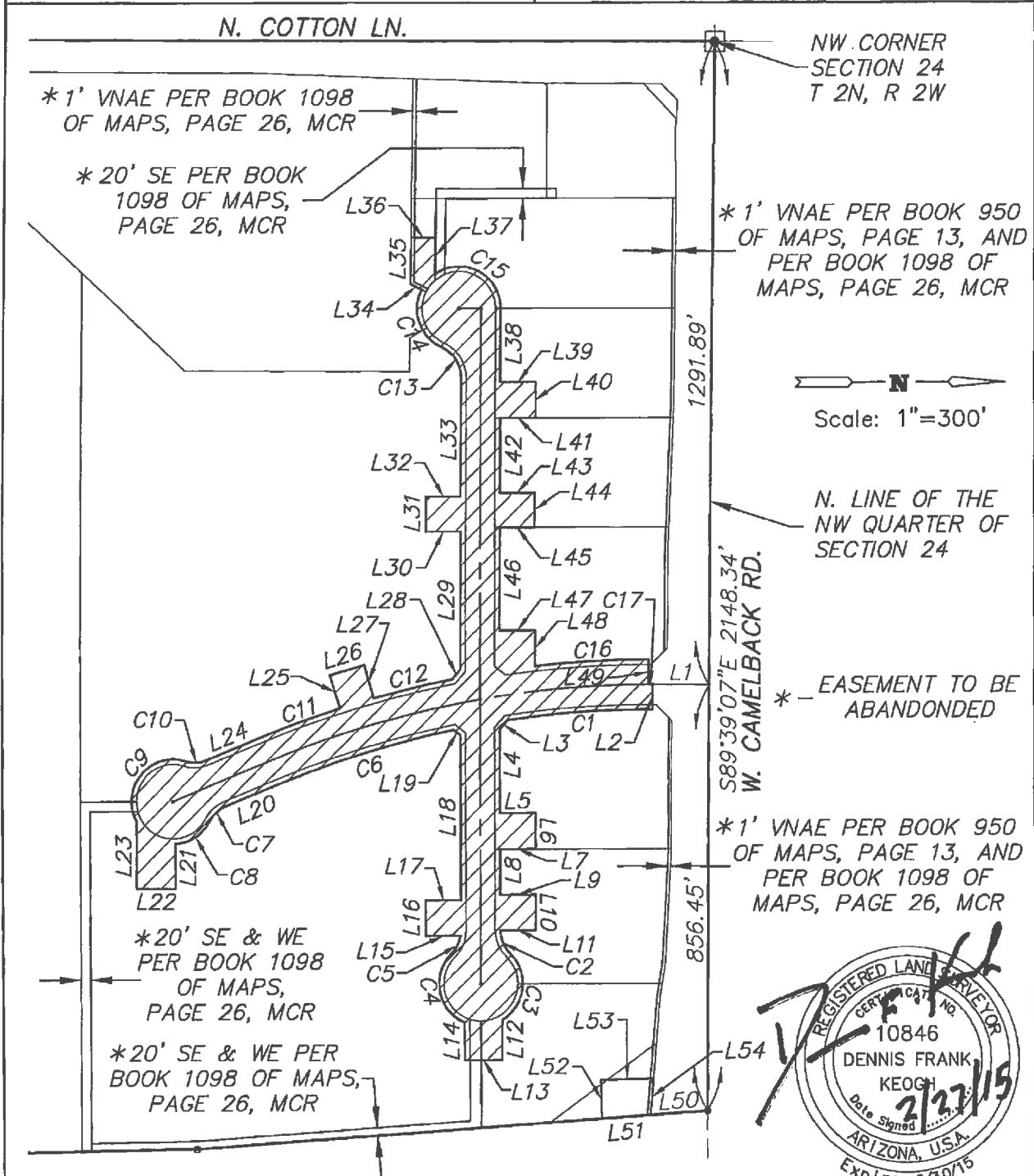
PREPARED FOR:

RP PV I, LLC

BY: SPK

DATE: FEB., 2015

JOB NO. 19677



 <p><b>Keogh Engineering, Inc.</b> 14150 W. MCDOWELL ROAD • GOODYEAR, ARIZONA 85395 PHONE: (623) 535-7260 FAX: (623) 535-7262 EMAIL: keogh@keoghengineering.com</p>	CHECKED BY: <u>DFK</u>	SHEET NO <u>6</u>
	DATE: <u>FEB., 2015</u>	OF <u>8</u>
Plot Date / Time: 02/27/15 01:29pm Layout Name: Sheet 8 Full File Path: L:\19677 Perimeter West\Replat\Abandonment-Exhibit.dwg		AutoCad Version: 16.0 Login Name: SHAUN

PREPARED FOR:

RP PV I, LLC

BY: SPKDATE: FEB., 2015JOB NO. 19677LINE TABLE

LINE	BEARING	LENGTH
L1	S00°20'53"W	114.31'
L2	S89°39'07"E	50.00'
L3	S49°22'07"E	24.43'
L4	S90°00'00"E	168.42'
L5	N00°00'00"E	72.20'
L6	S90°00'00"E	72.40'
L7	S00°00'00"W	72.20'
L8	S90°00'00"E	91.12'
L9	N00°00'00"E	71.76'
L10	S90°00'00"E	71.76'
L11	S00°00'00"W	71.76'
L12	S90°00'00"E	80.45'
L13	S00°00'00"W	76.80'
L14	N90°00'00"W	75.38'
L15	S00°00'00"W	70.77'
L16	N90°00'00"W	71.68'
L17	N00°00'00"E	71.68'
L18	N90°00'00"W	331.30'
L19	S39°26'03"W	17.19'
L20	S22°27'52"E	114.52'
L21	S90°00'00"E	89.98'
L22	S00°00'00"W	80.00'
L23	N90°00'00"W	134.83'
L24	N22°27'52"W	114.52'
L25	S72°21'55"W	69.55'
L26	N16°33'47"W	72.63'
L27	N74°27'44"E	69.44'
L28	N50°20'43"W	25.16'
L29	N90°00'00"W	276.51'
L30	S00°00'00"W	69.88'
L31	N90°00'00"W	69.88'
L32	N00°00'00"E	69.88'
L33	N90°00'00"W	239.99'
L34	S26°44'17"W	24.95'
L35	N89°39'07"W	93.43'

LINE	BEARING	LENGTH
L36	N00°20'53"E	49.37'
L37	S89°39'07"E	72.93'
L38	S90°00'00"E	147.84'
L39	N00°00'00"E	71.56'
L40	S90°00'00"E	71.56'
L41	S00°00'00"W	71.56'
L42	S90°00'00"E	150.12'
L43	N00°00'00"E	69.88'
L44	S90°00'00"E	69.88'
L45	S00°00'00"W	69.88'
L46	S90°00'00"E	206.22'
L47	N00°00'00"E	71.68'
L48	S90°00'00"E	71.90'
L49	S89°52'17"E	50.00'
L50	S04°06'46"E	115.86'
L51	S04°06'46"E	98.94'
L52	S88°35'02"W	77.98'
L53	N01°24'58"W	106.73'
L54	S85°15'48"E	73.75'

SEE SHEET 8 FOR CURVE DATA

**Keogh Engineering, Inc.**

14150 W. MCDOWELL ROAD • GOODYEAR, ARIZONA 85395  
 PHONE: (623) 535-7260 FAX: (623) 535-7262  
 EMAIL: keogh@keoghengineering.com

CHECKED BY: DFKDATE: FEB., 2015SHEET NO 7OF 8

Plot Date / Time: 02/27/15 01:29pm Layout Name: Sheet B  
 Full File Path: L:\19677 Perimeter West\Replat\Abandonment-Exhibit.dwg

AutoCad Version: 16.0  
 Login Name: SHAUN

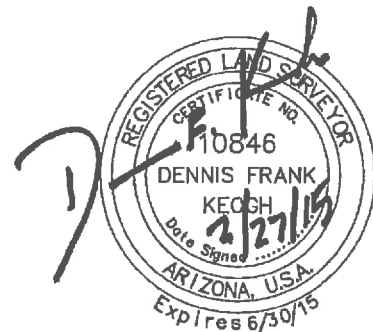
PREPARED FOR:

RP PV I, LLC

BY: SPKDATE: FEB., 2015JOB NO. 19677CURVE TABLE

CURVE	RADIUS	LENGTH	DELTA
C1	1950.00'	295.02'	8°40'07"
C2	65.00'	51.70'	45°34'23"
C3	85.00'	155.58'	104°52'12"
C4	85.00'	166.80'	112°26'07"
C5	65.00'	40.84'	35°59'44"
C6	1950.00'	370.50'	10°53'10"
C7	65.00'	45.32'	39°56'40"
C8	85.00'	87.58'	59°02'12"
C9	85.00'	201.10'	135°33'09"
C10	65.00'	45.32'	39°56'40"
C11	2050.00'	172.80'	4°49'47"
C12	2050.00'	164.25'	4°35'26"
C13	65.00'	75.35'	66°25'19"
C14	85.00'	138.21'	93°09'35"
C15	85.00'	185.37'	124°57'13"
C16	2050.00'	231.48'	6°28'11"
C17	2000.00'	7.65'	0°13'09"

SEE SHEET 7 FOR LINE DATA

**Keogh Engineering, Inc.**

14150 W. MCDOWELL ROAD • GOODYEAR, ARIZONA 85395  
 PHONE: (623) 535-7260 FAX: (623) 535-7262  
 EMAIL: keogh@keoghengineering.com

CHECKED BY: DFKSHEET NO. 8DATE: FEB., 2015OF 8

Plot Date / Time: 02/27/15 01:29pm Layout Name: Sheet 8  
 Full File Path: L:\19677 Perimeter West\Replat\Abandonment-Exhibit.dwg

AutoCad Version: 16.0  
 Login Name: SHAUN