

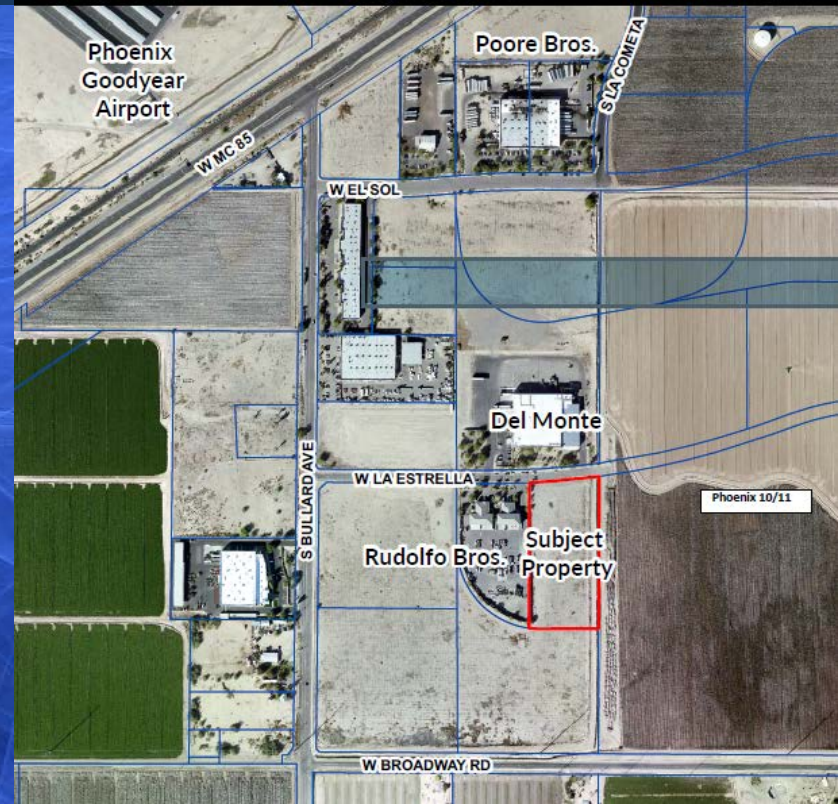


City Council Meeting
December 17, 2018

ARIZONA ISOTOPES SCIENCE RESEARCH

EXISTING LAND USE AND ZONING

- SITE LOCATED ON LA ESTRELLA – EAST OF BULLARD AVE.
- I-2 GENERAL INDUSTRIAL AREA AIRPORT COMMERCENTER PAD
- SURROUNDING AREA ALSO INDUSTRIAL USES



ARIZONA ISOTOPES SCIENCE RESEARCH

HAZARDOUS PROCESS USE PERMIT

- I-2 ZONING ALLOWS USES INVOLVING A HAZARD PROCESS WITH A USE PERMIT
- ISOTOPE PRODUCTION BY DEFINITION IS CONSIDERED A HAZARDOUS PROCEED DUE TO PRESENCE OF RADIOACTIVE MATERIALS
- PROCESS REVIEWED AND APPROVED BY FIRE CHIEF
- CONSTRUCTION AND OPERATION LICENSED BY AZ BUREAU OF RADIATION CONTROL

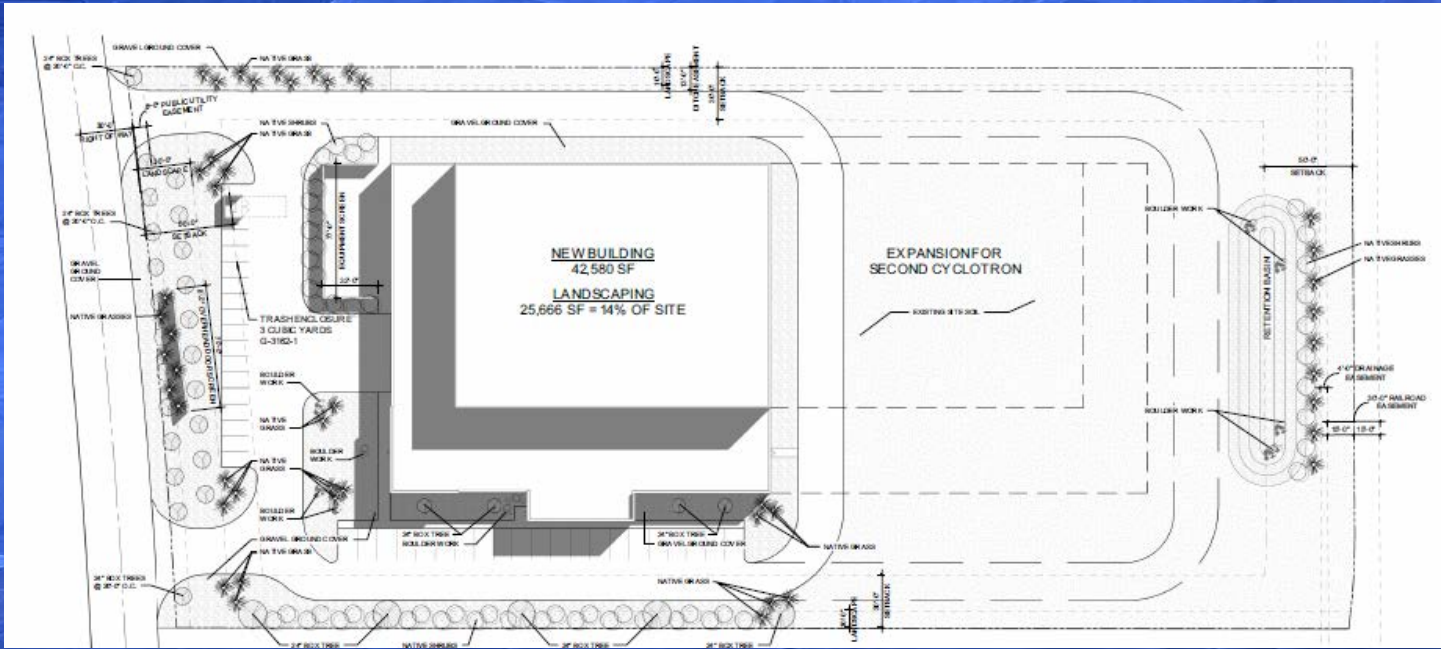
ARIZONA ISOTOPES SCIENCE RESEARCH

SITE PLAN

83,368 SQ.FT.
TOTAL

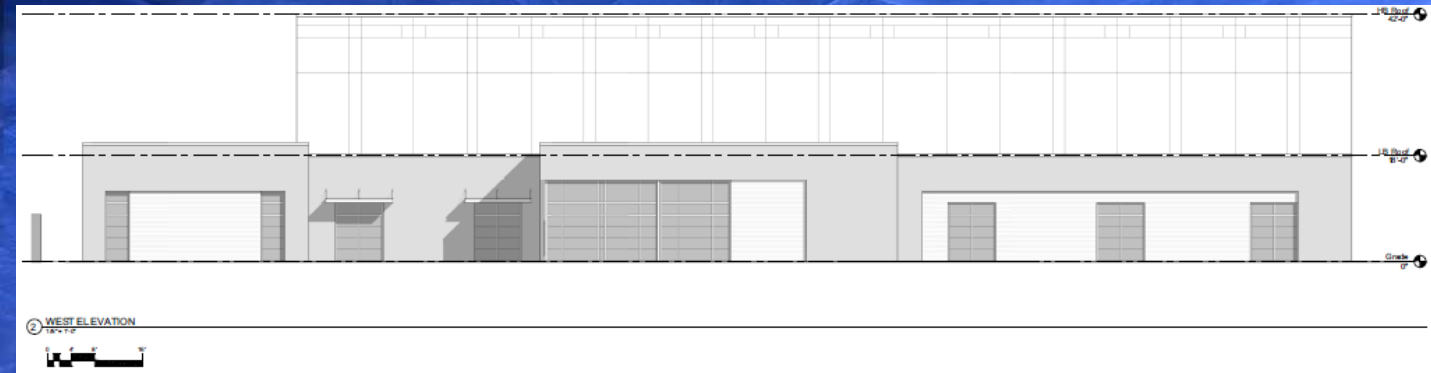
PHASE 1-
42,850 SQ. FT.

PHASE 2-
42,850 SQ. FT.



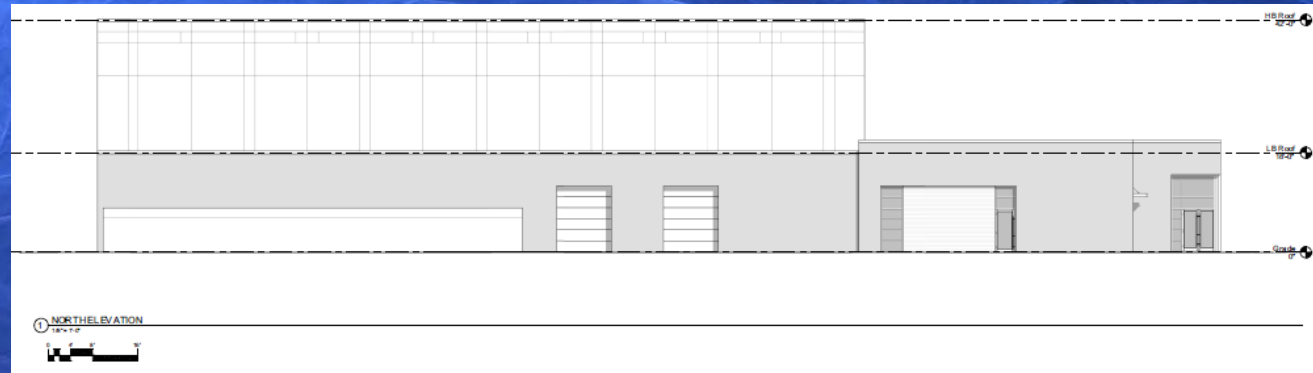
ARIZONA ISOTOPES SCIENCE RESEARCH

BUILDING ELEVATIONS



20-FOOT BLDG
HEIGHT OVER
OFFICE AREA

ARTICULATED
WALLS
42-FOOT BLDG
HEIGHT



ARIZONA ISOTOPES SCIENCE RESEARCH

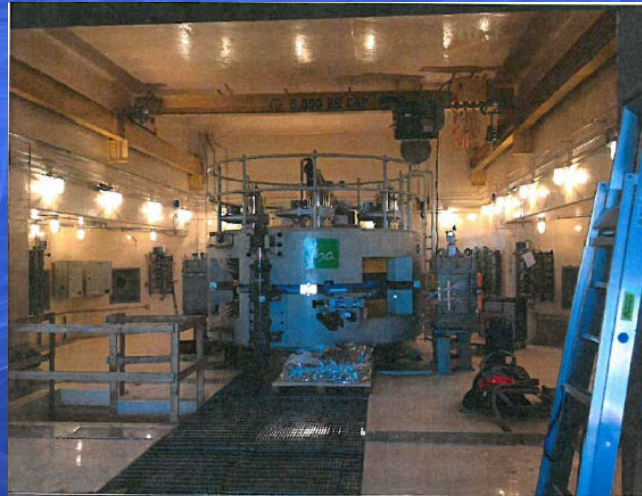
CYCLOTRON AND VAULT



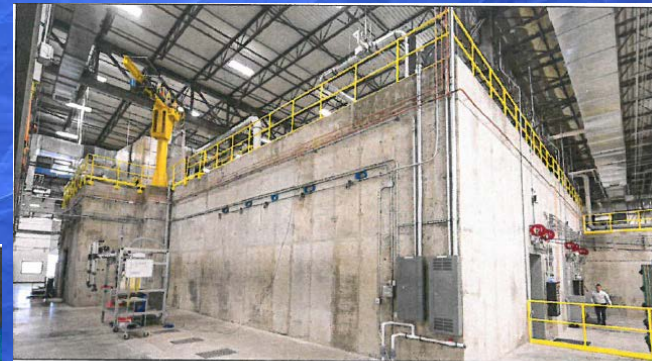
Cyclotron

MADE IN BELGIUM
140 TON UNIT
12 FOOT DIAMETER
30-70 MeV

Cyclone 70



The Cyclotron in the Vault

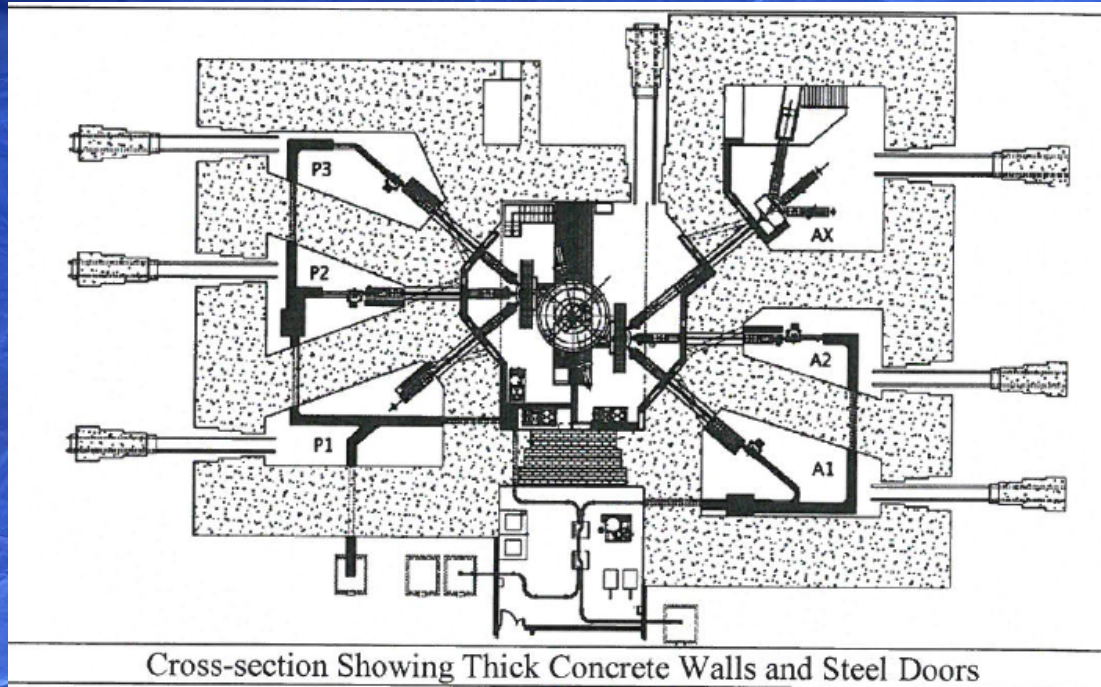


The Cyclotron Vault

10 FOOT THICK
CONCRETE WALLS
10 FOOT TALL
PLUG STYLE DOORS

ARIZONA ISOTOPES SCIENCE RESEARCH

VAULT CROSS SECTION



PLUG STYLE DOORS ON RAILS

MULTIPLE TARGETS

NEGATIVE ION ACCELERATION
TECHNOLOGY

ARIZONA ISOTOPES SCIENCE RESEARCH

RECOMMENDATION

- Planning and Zoning Commission recommended approval at its December 5, 2018 meeting by a vote of 5 to 0
- Staff recommends approval, subject to stipulations.

QUESTIONS?