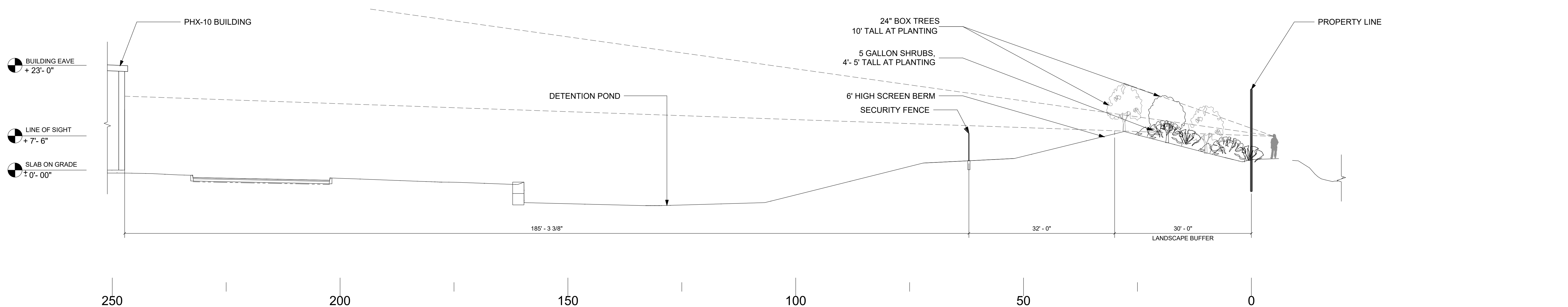
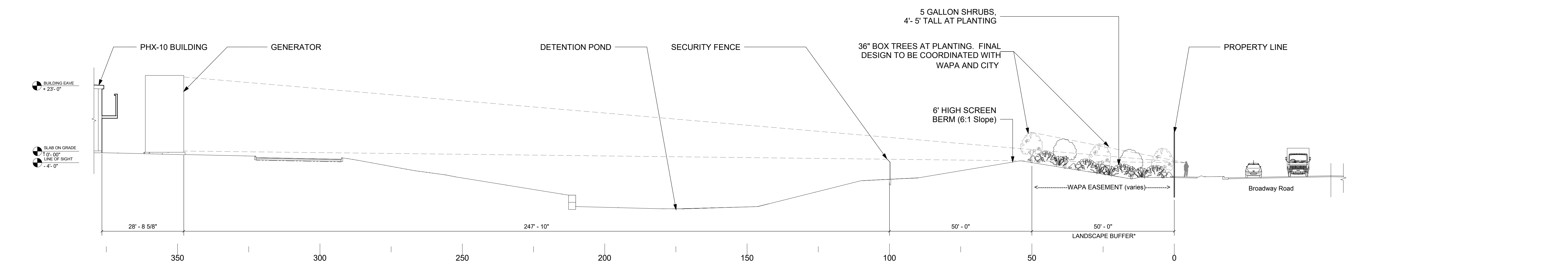


1 WEST - STANDING ON PROPERTY LINE LOOKING EAST
1" = 10'-0"



2 EAST- STANDING ON PROPERTY LINE LOOKING WEST
1" = 10'-0"



3 SOUTH - STANDING ON PROPERTY LINE LOOKING NORTH
1/16" = 1'-0"

*LANDSCAPE BUFFER AT MC-85 TO BE INSTALLED DURING FUTURE DEVELOPMENT PER STIPULATION #6