

AIRPORT GATEWAY at Goodyear

Comprehensive Sign Program 08-630-00007
Approved November 6, 2008
CSP Amendment 19-630-00003
Dated October, 2019

Prepared for:
EJM Development Co.
7419 E. Helm Drive, Suite E
Scottsdale, Arizona 85260

Prepared by:
JRC Design
4634 N. 44th Street
Phoenix, Arizona 85018



bleier
INDUSTRIES

9650 WEST ROOSEVELT STREET
TOLLESON, ARIZONA 85353
602-944-3117
FAX 602-395-0753
SALES@BLEIERINDUSTRIES.COM

Table of Contents

Introduction/ Materials & Colors	2
Freestanding Signage	
Freestanding Sign Matrix	3
Project Signage Site Location Plan	4
Sign Type 1 / Freeway Pylon	5
Sign Type 2 / Corner ID	6
Sign Type 3 / Entry Wall ID	7
Sign Type 4 / Directional	8
Tenant Wall Signage	
Wall Signage Introduction	9
Sign Type 4 / Wall Sign Matrix	10
Letter and Logo Standards	11
Custom Cabinet Standards	11
Storefront Signage Standards	12
Service Door Signage / Building Addressing	12
Project Graphic Standards	13
General Signage Standards and Requirements	14
Definitions	15
Appendix A	
Cancer Treatment Centers of America Sign Package	16-29

The Airport Gateway at Goodyear is located on the northeast corner of Bullard Avenue and Van Buren Street, adjacent to the I-10 freeway. It is a Mixed-Use development with a variety of commercial uses including office, hotel, medical, restaurant, and retail. The project is zoned preliminary PAD, with the portion of the project located at the northeast corner Fillmore Street and 143rd Avenue being zoned final PAD.

This Comprehensive Sign Program has been established for the overall project identification totaling approximately 212 acres of area. The sign program contained herein has been developed with the purpose of assuring an outstanding experience to the mutual benefit of the general public and all Airport Gateway at Goodyear tenants.

Properly adhered to, the criteria will ensure that project and tenant identification is consistent in quality, and is compatible with the overall architectural character of the project and surrounding neighborhoods.

Each individual development within the site shall develop their own sign package that suits the use of their site. The guidelines as laid out in this package are to be adhered to, with allowed flexibility in design and colors and materials. Close attention shall be paid, however, to the theme of the overall site, with approvals necessary from ownership and the City of Goodyear.

Project Colors and Materials

The sign system is designed to promote a cohesive design package throughout the project.

The project colors used in the architectural package will also be used throughout the signage package to unify the signage with the site.

The colors provided below represent those used for overall project signage, however, individual parcels and users will develop their own individual sign packages where colors and materials may vary according to the architectural palette of the specific development.

The more bold colors will be used in areas that will not be changed to maintain a consistency in the signage elements.

Lighter colors in the palette will be used in the areas where tenants could change. Lighter colors will not exhibit as much color change when new panels are placed adjacent to older ones.



DUNN EDWARDS
"Sand Dollar"
DE6171

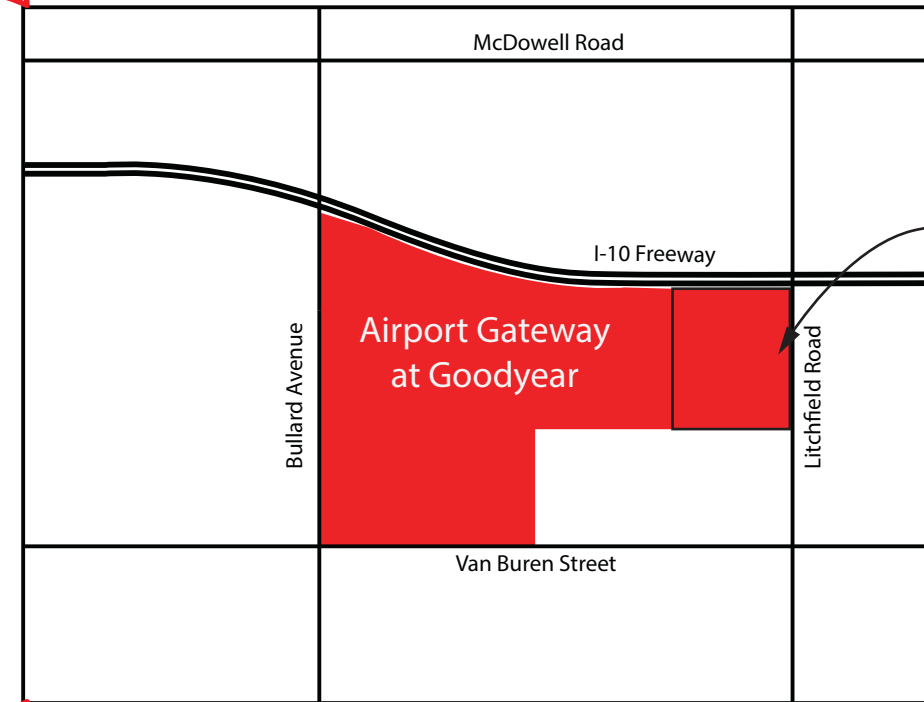


DUNN EDWARDS
"S'mores"
DE6111



Painted to match
custom color -
"Hemlock"

Vicinity Map



Owners:
CHEYENNE VALLEY LLC, a Nevada limited liability company
OXNARD COMMERCEPLEX LLC, a Delaware limited liability company
19TH AVENUE LLC, a Delaware limited liability company
BULLARD II PROPERTIES I LLC, a Delaware limited liability company

480-948-7880 (phone)
480-948-8051 (fax)

Contact:
Fred Stiles
EJM Development Co.
7419 E. Helm Dr., Suite E
Scottsdale, AZ 85260
Phone: 480-948-7880, ext. 111
Fax: 480-948-8051

AIRPORT GATEWAY CSP
AMENDMENT

REV 6/2019

Freestanding Sign Matrix

User Type	Type	Location	Quantity	Maximum Height	Maximum Area	Description	Materials/Illumination
Master Development (signage types allowed throughout the development)	Freeway Pylon (Sign Type 1) (office, commercial and medical uses)*	Adjacent to Interstate 10 Freeway as per plans.	Three (3)	80 Feet	Total Signage, per face, not to exceed 45% of the gross sign area	Tenant and Master Development Identification	Masonry, aluminum, acrylic, paint/finish Illumination to be internal, halo or combination of the two
	Corner ID Monument (Sign Type 2)	NE and SW corner of Bullard Avenue and Van Buren Street, as well as the corners of significant intersections throughout the project.	Eight (8)	6 feet	60 s.f.	Identification of Master Development Only	Masonry, paint/finish Illumination to be halo, ground up-lit or combination of the two
	Entry Wall ID (Sign Type 3)	Primary entrances into the project along Bullard Avenue and Van Buren Street.	Four (4) entries (one on each side of entry)	6 feet	32 s.f. per side	Identification of Master Development Only	
	On-site Campus Directory (Sign Type 4)	As per specific development plans.	As required to provide safe traffic flow	6 feet 6 inches	32 s.f.	Directional information to buildings, facilities, etc.	Masonry, aluminum, vinyl, paint/finish Ground up-lit or non-illuminated
Retail/Commercial	Multi-Tenant Monument	As per specific development plans.	Two (2) per street frontage	20 feet	120 s.f.	Up to six (6) tenant panels and identification of project	Masonry, aluminum, acrylic, paint/finish
	Single-Tenant Monument (banks, restaurants and fuel stations)		One (1) per street frontage	6 feet	60 s.f.	Identification of tenant	Illumination to be internal, halo or combination of the two
	On-site Directionals		As required to provide safe traffic flow	4 feet	12 s.f.	Information for private, public, delivery entrances and exits.	Aluminum, vinyl, paint/finish Non-illuminated
Mixed Use Office/Medical	Single-Tenant Building Monument	As per specific development plans.	One (1) per street frontage	6 feet	60 s.f.	Identification of tenant	Masonry, aluminum, acrylic, paint/finish
	Multi-Tenant Building Monument		One (1) per street frontage	10 feet	80 s.f.	Up to six (6) tenant panels and may contain identification of project	Illumination to be internal, halo, ground up-lit or combination
	Multi-Tenant/Building Monument (for multi-building developments)		Two (2) per street frontage	10 feet	80 s.f.	Up to eight (8) tenant panels and identification of project	
	On-site Directionals		As required to provide safe traffic flow	4 feet	12 s.f.	Information for private, public, delivery entrances and exits.	Aluminum, vinyl, paint/finish Non-illuminated
CTCA Off Premise	ST-2A hospital identification and future multi-tenant identification	NW corner of Litchfield Road and Celebrate Life Way (Fillmore)	One (1)	20 feet	250 s.f.	Hospital identification and future multi-tenant identification	Stone veneer, textured alum, acrylic. Internal illumination

*Pylon signage under separate review and use permit.

Sign locations must be delineated at time of Final Site Plan review for each individual future development.

Setbacks

No signs shall be located in any right of way or site visibility triangle.

All signs to be located at least 5 feet back of any public utility easement

**AIRPORT GATEWAY CSP
AMENDMENT**

Sign Type I - Freeway Pylon

NOTE: Pylon signage under separate review and use permit application.

There will be three pylons located in the northern portion of the project along the I-10 freeway, as noted on the sign location plan on page 4. These signs will serve primarily to identify hotel and retail establishments, but may also display prominent office and medical tenants as well. The freeway pylons are a key element for site recognition, containing the name of the project and up to six tenants. Landscaping requirements will be addressed and adhered to upon further development of the site in which the sign is located.

Sizes

Overall Height: 80'-0"
ID Panel: 27'-6"x6'-3" 172 s.f.
Tenant Panel: 20'-2"x6'-0" 6 at 122 s.f. each

Construction

Structure: Finished aluminum fabrication over pole footings as required.

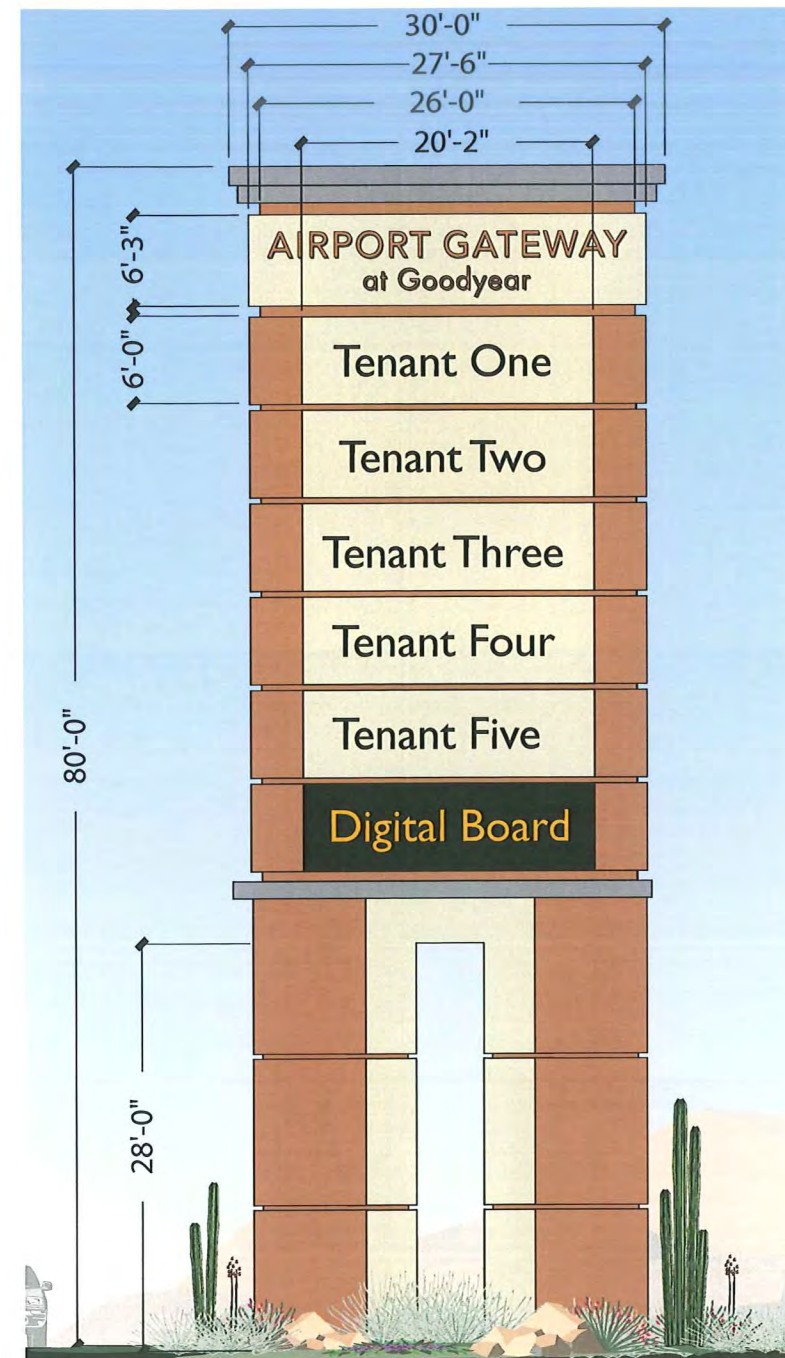
ID/Tenant Panels: Finished aluminum fabrication - routed copy with push-thru acrylic. One space to contain digital message board that will display tenant advertising at the frequency of 4 messages per minute. The message board on Pylon 1B shall display events and happenings at the hospital, and as events may not change frequently, the same message may be in place for days or weeks at a time.

Cap Details: Aluminum fabrication painted with designated colors.

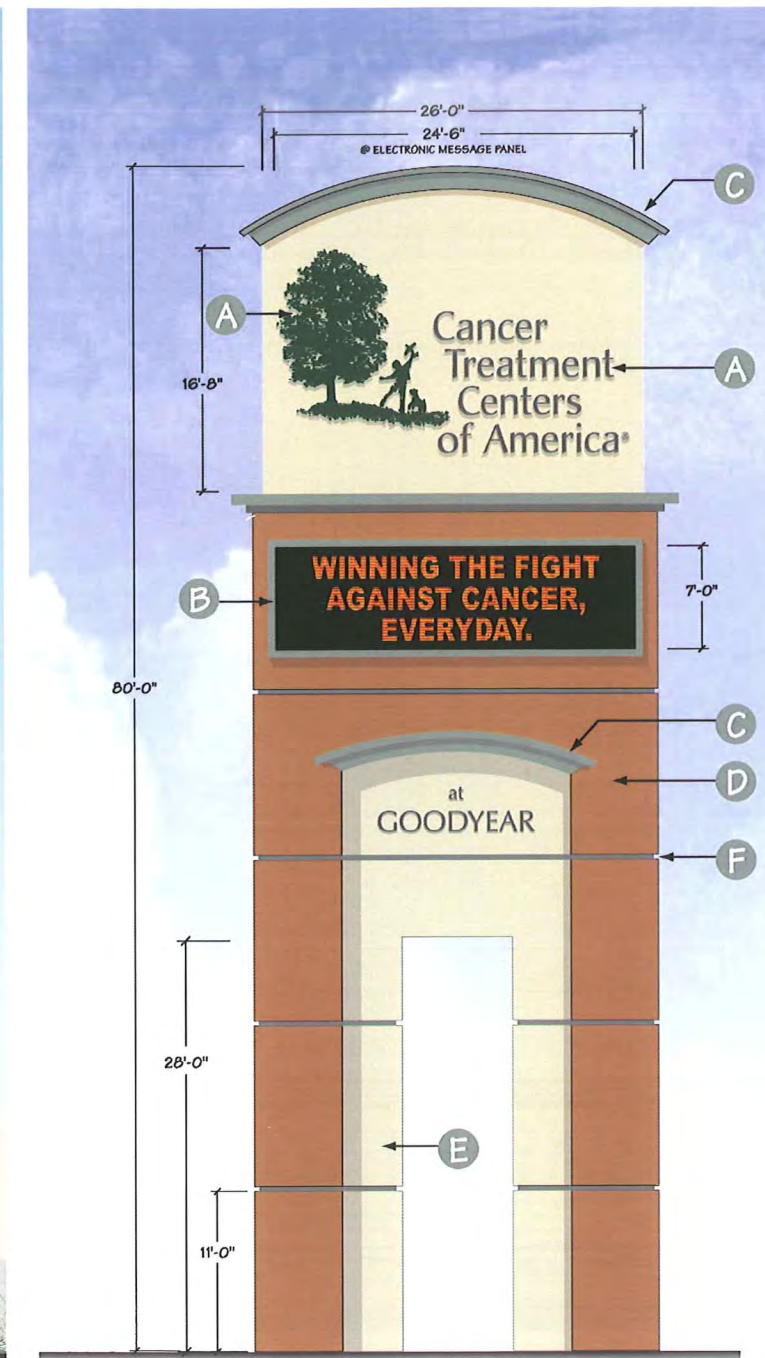
Colors

Structure: Sand Dollar and S'mores
ID/Tenant Panels: Sand Dollar
Cap Details: Painted to match Hemlock

Illumination Internal, halo or combination



Pylon IA



Pylon IB

Pylon IB Specifications

- (A) INTERNALLY ILLUMINATED REVERSE PAN CHANNEL LETTERS WITH LED "HALO" ILLUMINATION
- (B) LED ILLUMINATED MESSAGE PANEL
- (C) DECORATIVE CORNICE TEXTURED AND PAINTED TO MATCH HEMLOCK GREEN
- (D) ALUMINUM POLE COVER TEXTURED AND PAINTED TO MATCH DRIVIT 375 SPICE TAN
- (E) ALUMINUM POLE COVER TEXTURED AND PAINTED TO MATCH DRIVIT 449 BUCKSKIN
- (F) ALUMINUM REVEAL TEXTURED AND PAINTED TO MATCH HEMLOCK GREEN

Sign Type 2 - Corner ID Monument

This sign type will be located at the southwest corner of the project at the Bullard Avenue and Van Buren Street intersection, as well as the corners of significant intersections throughout the project. This sign should be used only to identify the project, however, a substantial user located at such corner may be permitted to use such sign to display their project identification (both logo and company name) with approval from the Owner and the City of Goodyear. In any case, the sign shall be integrated into the surrounding landscaping.

Sizes

Overall Height: 6'-0"
ID Area: 25'-0"x3'-3" 80 s.f.

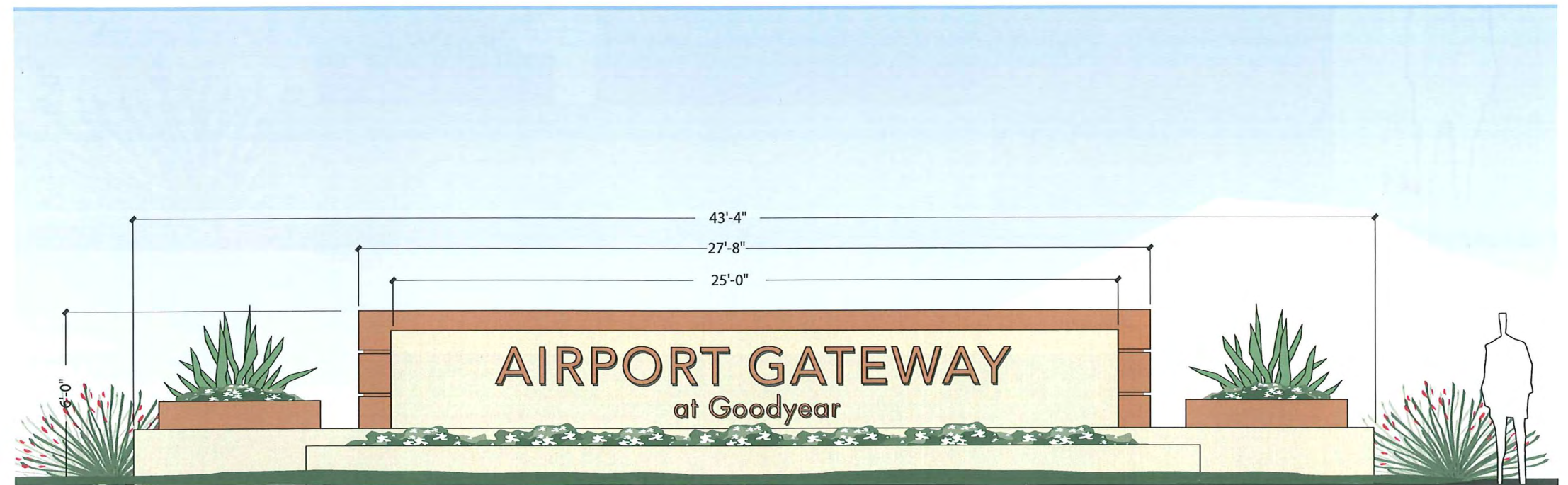
Construction

Structure: Masonry fabrication.
ID Letters: Reverse pan channel dimensional letters, pin mounted off surface.

Colors

Structure: Sand Dollar and S'mores
ID Letters: S'mores

Illumination Halo, ground up-lit or combination



Sign Type 3 - Entry Wall ID Monument

This sign type will be located at the entries to the project on Bullard Avenue and Van Buren Street. This sign shall be used only to identify the project entry and shall be integrated into the surrounding landscaping.

Sizes

Overall Height: 6'-0"
 ID Area: Airport Gateway: 14'-3"x2'-0"
 at Goodyear: 4'-4"x9"
 Total 32 s.f. per side

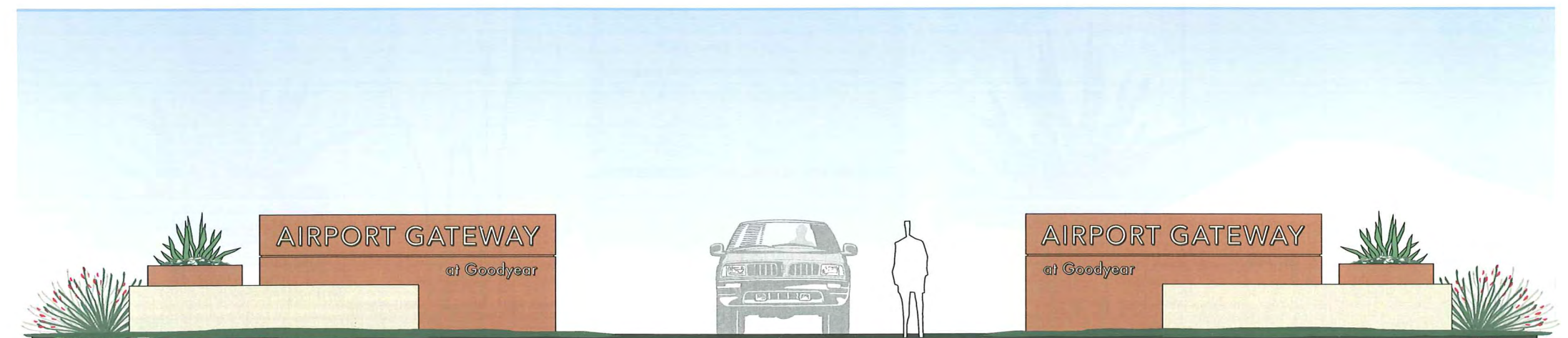
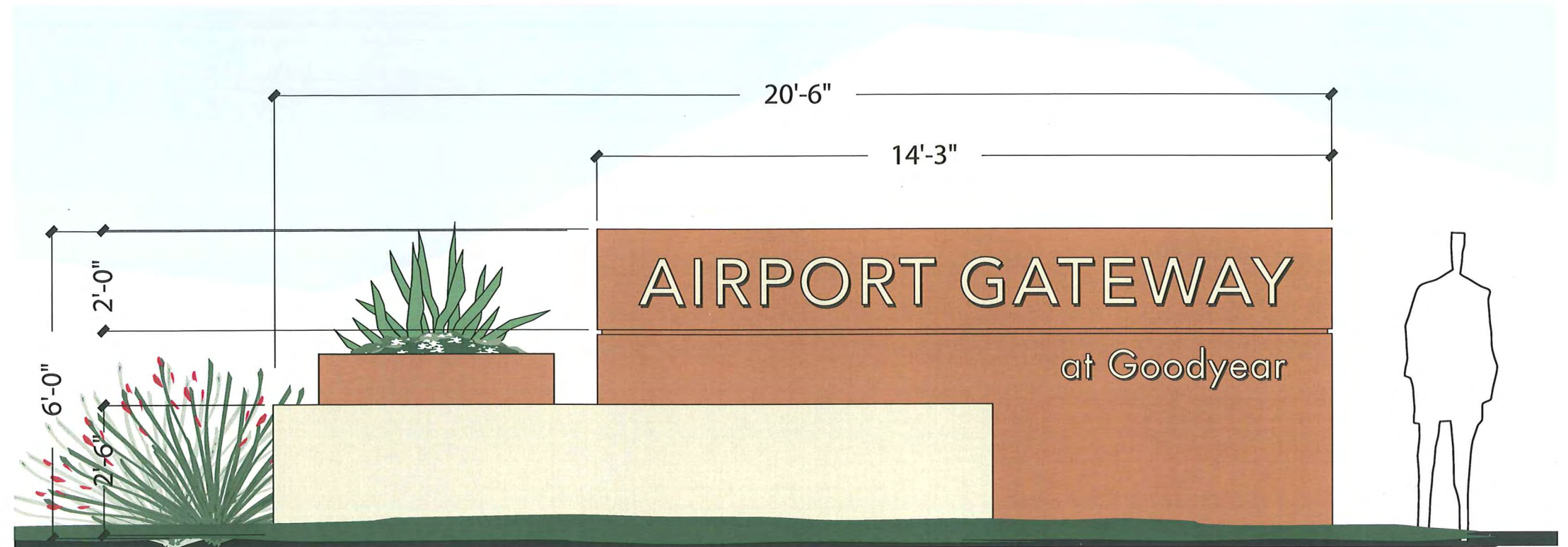
Construction

Structure: Masonry fabrication.
 ID Letters: Reverse pan channel or flat cut-out letters, pin mounted off surface.

Colors

Structure: Sand Dollar and S'mores
 ID Letters: Sand Dollar

Illumination Halo, ground up-lit or combination



Sign Type 4 - Overall Project Directionals

This sign type will be located along the main interior roadways throughout the site at major decision points for vehicular traffic. This sign shall be used to guide visitors to major destinations and shall be integrated into the surrounding landscaping.

Sizes

Overall Height: 6'-6"
Panels: 4'-0"x1'-3" 4 at 5 s.f. (20 s.f.)

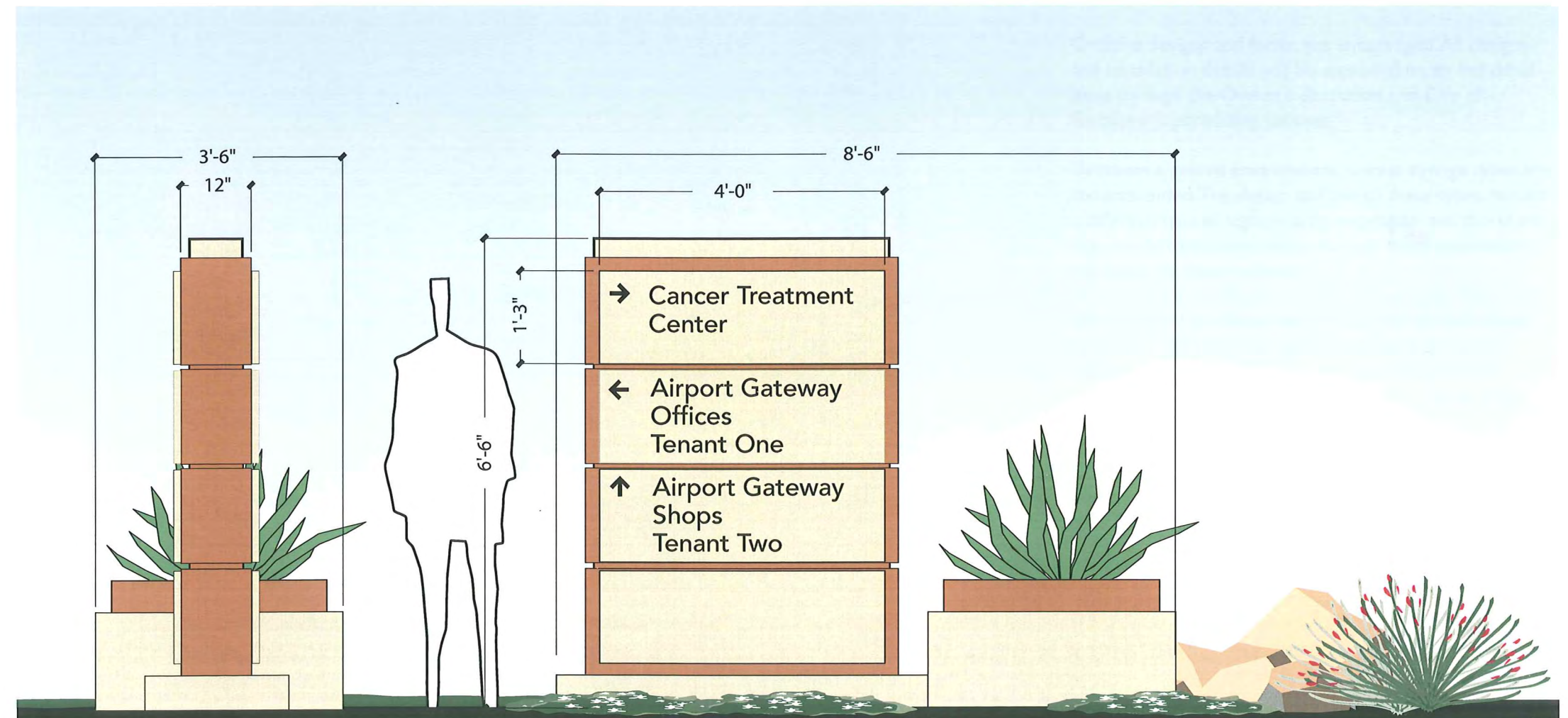
Construction

Base: Masonry fabrication.
Cabinet/Panels: Aluminum fabrication. Routed in
Information: Reflective vinyl applied to cabinet.

Colors

Structure: Sand Dollar and S'mores
Panels: Sand Dollar
Information: Brown or black reflective vinyl.

Illumination Ground up-lit or none



Tenant Storefront Signage Criteria

In order to maintain overall quality and uniqueness in the signage and graphics within Airport Gateway at Goodyear, the following set of guidelines has been developed to be applied to all exterior graphic concerns.

The intent is to establish a sense of quality through creativity and individuality. The results of these guidelines should produce tasteful identity for all users. Recognize that some businesses are small, non-franchise establishments that depend on their signs' clear communication to bring customers in by allowing the use of varied, well designed, sign types.

Design Practices/Standards

Creative designs and forms are encouraged. All designs and installation details will be approved on an individual basis through the Owner's discretion and City of Goodyear's permitting process.

To create a special environment, unique signage types are recommended. The design and use of these types require a different type of signage area calculation and therefore may be allowed more square footage when applications are made for these tenants.

Also included are those elements, materials and signage types that will not be acceptable unless they can be utilized in such a manner that demonstrates to the Owner that they are in keeping with the overall design quality and criteria.

Building Wall Sign Matrix

User Type	Type	Placement	Area	Quantity	Description / Illumination
Retail/Commercial	Anchor Tenants 75,000+ s.f.	Sign fields must be delineated at time of Final Site Plan review. Primary signage should be centered horizontally and vertically within the architectural frontage on which it is placed. All signage must be located within the Tenant's leased frontage.	One (1) square foot per each lineal foot of the building's front elevation, and one-half (1/2) square foot per each lineal foot for all other elevations. ¹ Single tenant usage shall not exceed an aggregate of two hundred (200) s.f. ²	One (1) per tenant on all elevations with readability to public.	Both individual pan channel, letters and logos; reverse pan channel letters and logos; or custom cabinets shall be allowed. Tenants shall be allowed to use their nationally recognized corporate standard design and colors Internal backlit, halo or a combination thereof. No exposed raceways.
	Major Tenants 45,000 - 74,999 s.f.			A maximum of four (4) elevations.	
	Mini Majors 8,0000 - 44,999 s.f.			One (1) per tenant on all elevations with readability to public.	
	Shop/Pad Tenants	Sign fields must be delineated at time of Final Site Plan review. Primary signage should be centered horizontally and vertically within the architectural frontage on which it is placed and/or directly over the doorway if space permits. All signage must be located within the Tenant's leased frontage.		A maximum of four (3) elevations.	
Mixed Use Office/Medical	Single tenant buildings	Sign fields must be delineated at time of Final Site Plan review.	One (1) square foot per each lineal foot of the building's front elevation, and one-half (1/2) square foot per each lineal foot for all other elevations. ¹ Single tenant usage shall not exceed an aggregate of two hundred (200) s.f. ²	One (1) per tenant on all elevations with readability to public.	Dimensional letters/logos (Flat cut out high density foam, acrylics, metals, cast acrylics, or reverse pan channels) ³ Consistent color(s) throughout multi-tenant building or group of buildings. Maximum of two (2) colors shall be selected from the building/signage color palette that will provide contrast from background surfaces. ³ Designs may be per the individual tenant's corporate design (symbol and typography). Signage to be halo, or non-illuminated, per Owner's discretion. ³ No exposed raceways.
	Multi-tenant buildings (1-2 stories)	Primary signage should be centered horizontally and vertically within the architectural frontage on which it is placed and/or directly over the doorway if space permits.		A maximum of four (4) elevations may have signage.	
	Multi-tenant buildings (3 or more stories)	Sign fields must be delineated at time of Final Site Plan review. Signage to be allowed on lowermost and uppermost levels that offer signage placement. Primary signage should be centered horizontally and vertically within the architectural frontage on which it is placed and/or directly over the doorway if space permits. All signage may, or may not, be located within the Tenant's leased frontage.		A maximum of two (2) signs per business.	
Master Development (signage types allowed throughout the development)	Freeway Signs - Buildings with either main entry or rear elevations directly adjacent to freeway.	On elevations oriented to freeway traffic. Sign fields must be delineated at time of Final Site Plan review. All signage must be located within the Tenant's leased frontage.	One (1) square foot per each lineal foot of the building's front elevation, and one-half (1/2) square foot per each lineal foot for all other elevations. ¹ Single tenant usage shall not exceed an aggregate of two hundred (200) s.f. ²	One (1) sign per elevation.	Internal backlit or halo, or combination
	Awning Signage	Placed on awnings that are integral to the architecture, extending over tenants entry.	Maximum of 25% of front face area of awning may be used for signage.	One (1) per entry.	Shall not be illuminated. Shall not be calculated against tenants allowed aggregate.
	Window Signage	Placed on tenant windows at and around entry areas.	Maximum of 25% of total window area may be used for signage.	N/A	Shall not be illuminated. Shall not be calculated against tenants allowed aggregate.

- 1 Sign proportions restricted to 70% vertical height and 80% horizontal width of architectural space installed upon.
- 2 Larger square footage exceptions and alternate sign locations may be considered for major tenants or single user tenants on an individual basis upon approval of the Owner and the City Goodyear.
- 3 Exceptions may be made to allow major single tenant office and medical users to use pan channel face-lit letters and logos, and their corporate standard colors, based on approvals by the Owner and the City of Goodyear.

Letter and Logo Standards

All retail tenants shall have building mounted signs fabricated as pan-channel/reverse pan-channel letters and logos, flat cut-out metal, and/or "custom" cabinets. Office tenants shall utilize reverse pan-channel letters and logos. Exceptions may be made, however, to allow major single tenant office or medical users to use pan-channel letters, based on approvals from the Owner and the City of Goodyear.

Construction

Individual letters and logos must be constructed with sheet aluminum returns and retainers. Minimum material thicknesses to be .090 for faces and .050 for letter and graphic returns. Flat cut out metal letters shall be a minimum 1" thick. No "Channelume," "Letteredge," or similar material will be allowed.

Individual letters and logos shall not project from the face of the building more than 8" for those utilizing a concealed raceway, and 12" for self contained letters or cabinets. Depth of letters and logos for any one project should be consistent throughout to maintain design continuity and higher level of quality.

Threaded rods or anchor bolts shall be used to mount sign letters, which are spaced out from the building face. Angle clips attached to letter sides will not be permitted. All mounting attachments shall be sleeved and painted.

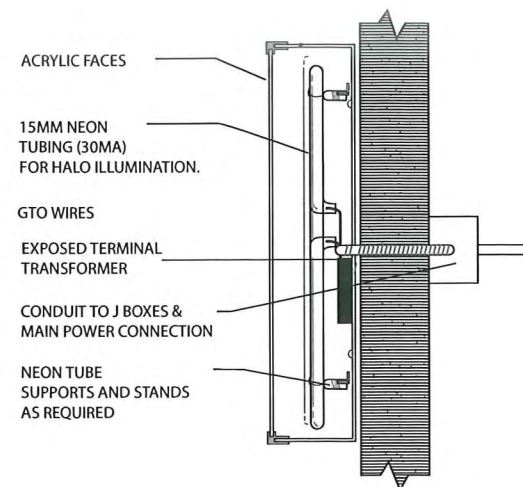
Illumination

Lighting for wall mounted individual letters can either be internally backlit, halo illuminated, or a combination thereof. Indirect lighting when integrated into the architecture is also a recommended solution for unique individual letter applications.

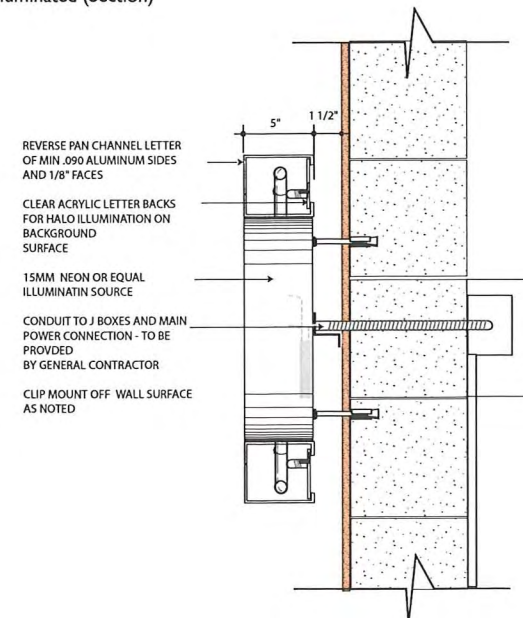
Lighting used for all the various applications can be neon, low voltage LED, halogen pin mounted or fluorescent when full spectrum lamps are used.

When using white, all whites will be 6200-6500K.

Typical Pan-Channel Letter Halo Illuminated (Section)



Typical Reverse Pan-Channel Letter Halo Illuminated (Section)



Individual letter examples.



Custom Cabinet Standards (Retail)

Cabinets must be designed and fabricated with a minimum of three (3) signage/graphic levels, each a minimum of 1" deep.

Cabinet face planes must be opaque and contrasting color, texture or material from one another to create depth and dimension.

Unless as part of a nationally registered and/or trademarked logo, rectangular shaped "cabinets" shall not be allowed.

All signs will be approved on an individual basis through owners discretion. Creative designs and forms are encouraged.

Construction

Main identification letters (primary name) shall be dimensional reverse pan or pan channel with a minimum 1" thick dimension.

Secondary copy, which is less than 5" in height and/or background graphics, may be routed from the face with either backup or push through acrylic. This does not count as a layer since the depth does not meet the 1" minimum depth.

Exposed neon raised off the face of the sign can be used and will be considered a different level, but will be limited to a maximum of ten percent (10%) of the overall sign square footage.

Illumination

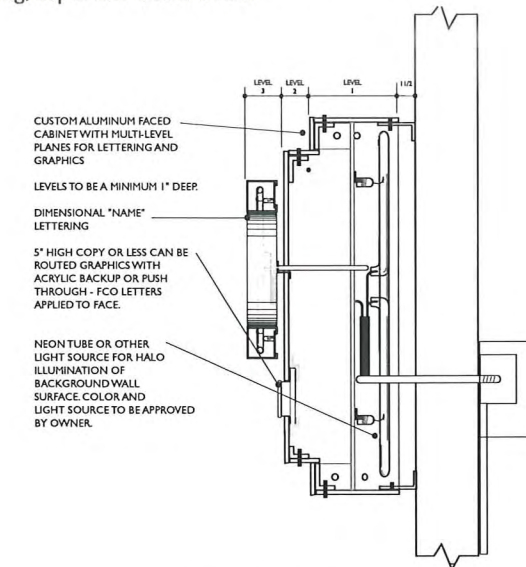
Exposed neon tubing shall be permitted subject to Developer/Landlord on custom cabinets only.

Custom cabinets shall be internally illuminated and should be halo illuminated to provide definition of the outer edge of the cabinet.

Installation

All custom cabinets may be installed up to 1 1/2" off face of building to provide for halo illumination.

Typical "Custom Cabinet" section detail for layering, depth and illumination.



Grazia - Individual letters with cut out aluminum panels with routed/backup copy.



Individual flat cut out planes of distressed metal, halo backlit.



Individual pan channel letters over layers of custom shapes and banner with routed copy.



Window Signs

No more than 25% of front glass area may have signage/ graphics, applied to, or within three (3) feet behind the window area. This includes temporary signage applications for sales, promotions and/or any permanent identification signage. Permanent identification signage may include the name of the establishment, hours of operation, suite numbers, logos and other graphic elements.

This signage does not count against the tenant's square footage allotment.

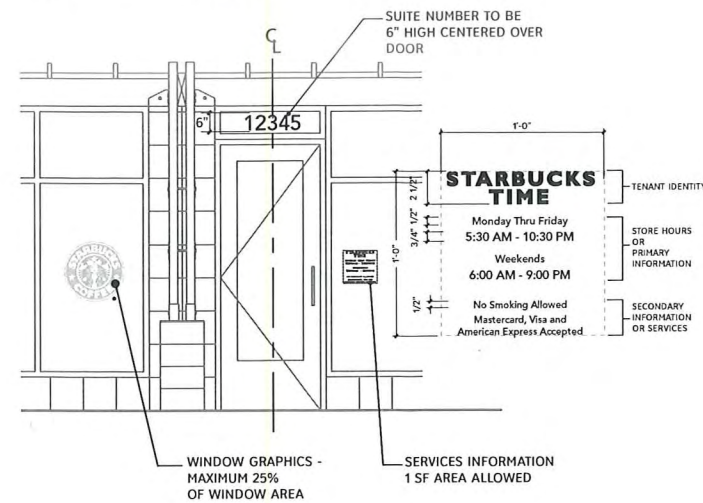
Printed menus are not allowed to be taped to windows. Menus for take-out or eat-in restaurants, or in-store services must be within an architecturally integrated, enclosed design element. These may be internally illuminated.

Colors and Layouts

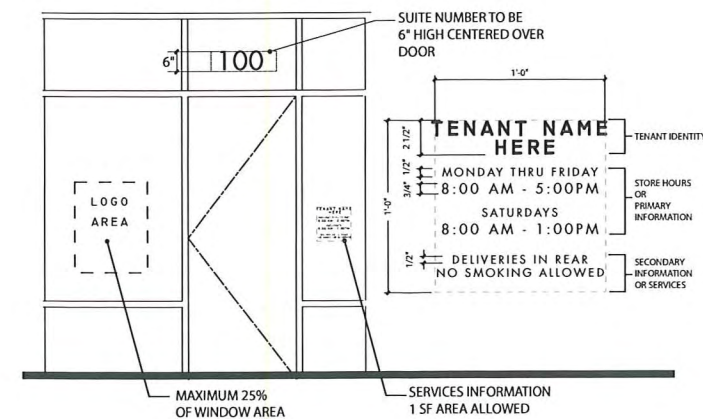
For retail applications, colors should be used aesthetically and effectively within the tenant's corporate colors and graphic standards.

For office/medical applications, colors should be kept to a standard white or subdued color consistently used throughout the building or complex.

Typical retailwall sign application example



Typical office wall sign application example



Service Door Signage (Retail)

Service/back doors to Tenant spaces throughout the project shall be standard 5" address number, and 4" name identification (may also include and additional information as required by local jurisdiction). Shall be installed by the Landlord. Typeface to be Avenir 65 Medium.

The Tenant shall not apply any signage or other wording to service doors.

Building Addressing

Building Identification Address Numerals to be individual reverse pan channels with optional neon halo backlighting for night time visibility based on Owner's option.

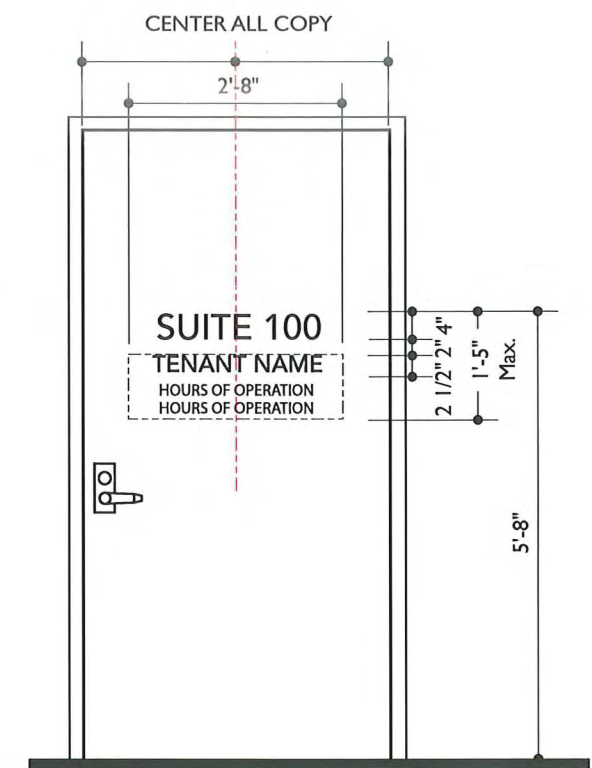
Numeral height shall be a minimum twelve inches (12").

Returns shall be three inches (3") deep and mounted one and one-half (1-1/2") inches off background wall. (See standard letter construction details.)

Numerals shall be located on the corner of the building facing the nearest major street, to be visible to approaching emergency response vehicles. Quantity shall be determined by the Fire Marshall based on the site plan.

Color of numerals shall provide contrast to the background surface for visibility.

Typeface to be consistent throughout Airport Gateway at Goodyear is Avenir 65 Medium.



All tenants, of all user types, within Airport Gateway at Goodyear shall adhere to the following graphic standards and general requirements & procedures in creating their individual signage packages.

The graphics standards set forth are good design practices for lettering sizes, proportions and design techniques to provide quality signage for identification graphics for all Owners/Occupants and Tenants within Airport Gateway at Goodyear.

The general requirements includes procedures, restrictions and stipulations for the whole project which will ensure a quality development for the Owner as well as the City of Goodyear.

Colors & Typography

For retail tenants, colors, letter styles and logos shall be per the tenant's registered corporate standards. Faces and returns should be consistent in color to create a more quality oriented design and manufactured product.

For office users, letter styles and logos may be per tenants corporate standards. If the tenant has no such standard, the typeface Avenir 85 Heavy shall be utilized.

Avenir 85 Heavy
 ABCDEFGHIJKLMNOPQRSTUVWXYZ
 abcdefghijklmnopqrstuvwxyz
 1234567890

Consistent in color(s) throughout multi-tenant building or group of buildings, containing a maximum of two (2) colors which shall be selected from the building/signage color palette that will provide contrast from background surfaces. Exceptions may be made, however, to allow major single tenant office or medical users to use their corporate standard colors, based on approvals from the Owner and the City of Goodyear.

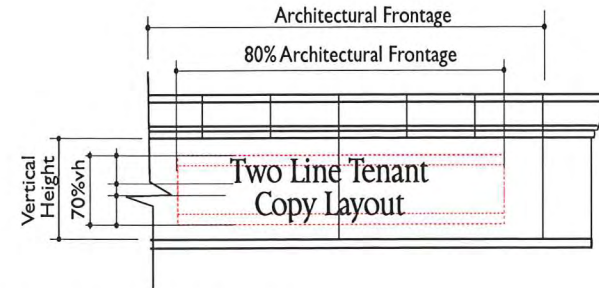
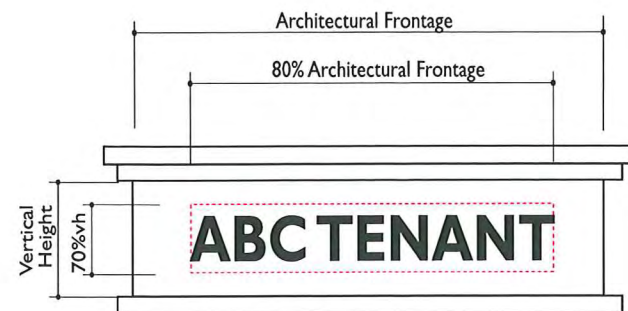
Location

Primary identification for retail applications should be centered, whenever possible, over main entry. These locations provide wayfinding to the establishment. See page 9 for specific location criteria.

Architectural Sign Size

The overall height of any sign layout (single or multiple lines of copy, graphics or custom cabinets) should be based on a maximum vertical height and horizontal width, utilizing good design proportions of the architectural fascia, wall, or sign area it is installed upon.

Acceptable proportions shall not exceed a maximum of seventy-five percent (75%) of the vertical height and an overall length held to a maximum of eighty percent (80%) of the area which it is installed upon.



Sign Area Calculation

Where a sign consists "Standard and or typical" signage applications of individual letters, numerals, symbols, or other similar components, the total area of the sign shall be the sum of the areas of the squares or rectangles surrounding each individual component.



Layout/Design Standards

A minimum of one half letter height line spacing will be used between all multiple lines of signage layouts, unless corporate standards (Owner's nationally registered trademark) create a unique circumstance.

Occasional ascenders and descenders, or logo details (maximum of 4%) will be allowed to go beyond the sign envelope, but must be counted as square footage and may not be closer than three inches (3") from break or delineation of architecture.



Signage layouts must include a name for the store and can not be descriptive only. For example INSURANCE, NAILS, TANNING SALON, as the sole identifier for the store will not be allowed.



San serif font used with a name and style - allowed

Tag lines shall be allowed on an individual basis only and are subject to Landlord approval. Any allowable tag lines shall be individually illuminated or non-illuminated and shall not exceed 10" in height. The width of the tag, if approved, shall not exceed 75% of the width of the fascia on which it is installed

Tag lines of services or individual products for sale within the store will not be allowed unless part of the nationally registered trade or service mark. Proof of registration will be required.



Letter Spacing/Kerning

To fit layout standards, lettering and/or logo may not be condensed more than 90% of horizontal letter width of original design.

Examples below illustrate a name that is allowed a maximum letter height of 24" within a designated maximum length. The graphics show what is allowed for fitting the lettering within that space, based on the tenants registered trademark/logo.



ACCEPTABLE LAYOUT
SLIGHTLY REDUCED LETTER AT 90% HORIZONTAL SPACING



UNACCEPTABLE LAYOUT
MAX. LETTER-TOO TIGHT KERNING AND AT 90% HORIZONTAL SPACING



UNACCEPTABLE LAYOUT
MAX. LETTER-80% HORIZONTAL SPACING

General Sign Standards and Requirements

All signs at Airport Gateway at Goodyear must be compatible with the standards outlined in these Comprehensive Signage Standards and in conformance with the Declaration of Restrictions and Easements. The purpose of the sign standards is to ensure an attractive shopping environment and to protect the interests of the surrounding neighborhood, Developer, and Owners/Occupants of all parcels within Airport Gateway at Goodyear. Conformance will be strictly enforced, and any installed nonconforming or unapproved signs will be brought into conformance at the sole expense of the Owner/Occupant.

Before designing signs, all Airport Gateway at Goodyear Owners/Occupants will receive a copy of these signage standards. Sign plans submitted to the Committee for approval must conform to these standards. The Committee may administer and interpret the criteria as it applies to signage designs. All signs must be approved in writing by the Committee prior to application to the City of Goodyear for permitting.

For Committee review, send three (3) sets signage drawings to:

Owner
Attn.: Airport Gateway at Goodyear
EJM Development Co.
7419 E. Helm Dr., Suite E
Scottsdale, AZ 85260

1. Signage proposal. Each Owner/Occupant must submit to the Committee three (3) sets of detailed shop drawings showing locations, dimensions, sizes, design, colors, materials, lettering, graphics, conduits, junction boxes, sleeves, and other mounting apparatus of all proposed wall, window, and rear door signs. This submittal must be made at least fifteen (15) days prior to submitting requests for permits or manufacturing.

2. Sign contractor's responsibilities. Prior to preparation of signage drawings and specifications, the Owner's/Occupant's sign contractor must review all architectural, structural, and electrical documents as they relate to the building wall and/or storefront at the proposed signage location. In addition, the sign contractor should visit the project site to become familiar with as-built conditions and verify all dimensions.

3. Committee review. After review of the signage proposal, the Committee will return one of the three sets of drawings to the Owner/Occupant, marked either "Approved," "Approved as Noted," or "Revise and Resubmit."

4. "Approved." If drawings are marked "Approved," the Owner/Occupant is allowed to proceed with sign permitting and then construction and installation in accordance with the drawings.

5. "Approved as Noted." If drawings are marked "Approved as Noted," the Owner/Occupant is allowed to proceed with sign permitting and then construction and installation, provided that any modifications noted are incorporated into the design. An applicant that takes exception to the noted modifications may revise and resubmit, as explained below.

6. "Revise and Resubmit." If drawings are marked "Revise and Resubmit," the plans will be returned to the Owner/Occupant with comments. The drawings should be revised and resubmitted for Committee approval.

7. Openings in building walls. Locations of all openings for conduit and sleeves in building walls must be indicated by the sign contractor on the drawings submitted. The contractor shall install the sign in accordance with the approved drawings.

8. Messages. Signs are restricted to advertising either (a) the person, firm, company, or corporation operating the use conducted on the site, or (b) the products sold therein, but not both.

9. Owner/Occupant responsibilities for other regulations. The Committee's approval of an Owner's/Occupant's signage plan does not constitute an implication, representation, or certification by the Committee that those plans are in compliance with applicable statutes, codes, ordinances, or other regulations. Compliance with other regulations is the sole responsibility of the Owner/Occupant for all work performed on the premises by or for the Owner/Occupant.

10. Prohibited signs. No signs, advertisements, notices, or other lettering shall be displayed, exhibited, inscribed, painted, or affixed on any part of the buildings visible from outside the premises, except as specifically approved by the Committee. Signs that are installed without written approval from the Committee, or that are inconsistent with approved drawings, may be subject to removal and reinstallation by the Developer at the Owner's/Occupant's expense. Rude, obscene, offensive, animated, flashing, blinking, rotating, moving, or audible signs; placards; posters; playbills; postings; paintings; flags; signs in public rights-of-way; and fixed balloons are not permitted in any location, whether or not visible from outside the premises. Change-panel signs are prohibited, except at gas stations. Prohibited signs will be removed at the Committee's discretion.

11. Illuminated signs. The City of Goodyear requires permits for all signs and electrical permits for all signs that are illuminated. It is the Owner's/Occupant's sole responsibility to secure these and any other permits that may be required, and to remain in compliance with these approvals and permits.

12. Size limitation. Each Owner/Occupant must limit the area of its sign in accordance with the area allocated for signage. Maximum letter height and length varies according to storefront, but it must not exceed the area allocated for signage. Each Owner/Occupant will be granted a minimum of one sign.

13. Labels. No labels are permitted on the exposed surface of signs, except those required by local ordinance. Sets of individual letters shall have one label on an end letter only. These are to be installed in an inconspicuous location.

14. Freestanding signs. All freestanding signs must meet applicable setbacks, and their installation must comply with all local building and electrical codes.

15. Upkeep and maintenance. Each Owner/Occupant is fully responsible for the upkeep and maintenance of its sign(s), including any individual pylon or monument signage, and Owners/Occupants are to repair any sign defects within five (5) days of notification. If an Owner/

Occupant does not repair said sign(s), the Developer, at the Owner/Occupant's sole cost and expense, may repair and/or replace sign(s). A penalty of 100% of the Developer's cost to repair said signage, in addition to the cost of the repair, may be assessed to the Owner/Occupant if the Developer or Property Manager is required to provide the necessary maintenance due to the Owner's/Occupant's noncompliance following notification.

16. Illumination timer. Power to illuminate the Owner's/Occupant's sign is to be from Owner's/Occupant's electricity meter, switched through a Tork DW-2100AY time clock, set in accordance with schedules determined by the Developer and shopping center manager.

17. Sealing of building penetrations. All penetrations of the building structure required for sign installation shall be neatly sealed in a watertight fashion.

18. Damage caused by or during installation. The sign contractor and/or Owner/Occupant will pay for any damage to a building's fascia, canopy, structure, roof, building elements or flashing caused by sign installation.

19. Required insurance for sign contractors. All sign contractors must carry workers' compensation and commercial liability insurance against all damages suffered or done to any and all persons and/or property while engaged in the construction or installation of signs, with a combined single limit in an amount not less than two million and no/100 dollars (\$2,000,000.00) per occurrence. Every sign contractor must hold a current contractor's license in the State of Arizona. Landlord or building owner must be named as additionally insured in the workers' compensation and commercial liability insurance.

20. Committee's right to modify requirements. The Committee has the right to modify the sign standards and requirements for any Owner/Occupant.

Definitions

The following definitions are used throughout the comprehensive signage plan and are exclusive to this document.

Aggregate Sign Area

The total area of all permitted signs pertaining to any one Owner/Occupant, which includes Street-front signage, Storefront signage (arcade and window signage/graphics).

Architectural Frontage

The portion of the building frontage of the leased space which has been delineated through use of reveals, patterning, materials, finishes, column breaks, etc that creates a special area for signage.

Architectural Awnings

Elements which are constructed of permanent type of materials and are an integral part of the building elevation design.

Building Leased Frontage

The overall lineal foot frontage of a leased space.

Cabinet (Typical)

Acrylic, Plexiglas, or plastic-faced panels with surface or second-surface applied or painted graphics, internally backlit in a box construction.

Custom Cabinet

Cabinet designed and fabricated in multiple planes, colors, finishes and unique shapes and forms. Typically with dimensional illuminated letters and opaque backgrounds.

Committee

Made up of the consenting owners as defined in the Construction, Operation and Reciprocal Easement Agreement.

Graphics

Lettering, symbols, and logos used for name identification (primary identification), and for identification of product and services (secondary identification or modifiers).

Sign Area

The aggregate area of the smallest rectangles that encloses individual elements of a sign's lettering and logos.

Sign Envelope

The overall height and length allowances of sign area designated for Owner/Occupant sign placement on a building elevation.

Street Front Signage

Signage installed parallel to the building fascia, typically located along the front of the building on parapet, fascia or building wall intended for the viewing of vehicular traffic.

Storefront Signage & Graphics- Permanent

This is the signage located along the storefront portion, oriented to pedestrian. It includes the transparent portion of storefront (windows) and/or solid wall areas used for merchandise display and permanent graphics. This includes awnings, tenant suite number, logo and name identification, secondary name modifiers, hours of operation, services or name brand marketing, menu cabinets, etc.

Storefront Signage & Graphics - Temporary

Any sign, banner, pennant, balance or advertising display constructed of cloth, canvas, light fabric, cardboard, wallboard or other like material with or without frames.

APPENDIX "A"

v 1.3 - 061319



**AIRPORT GATEWAY CSP
AMENDMENT**

REV 6/2019

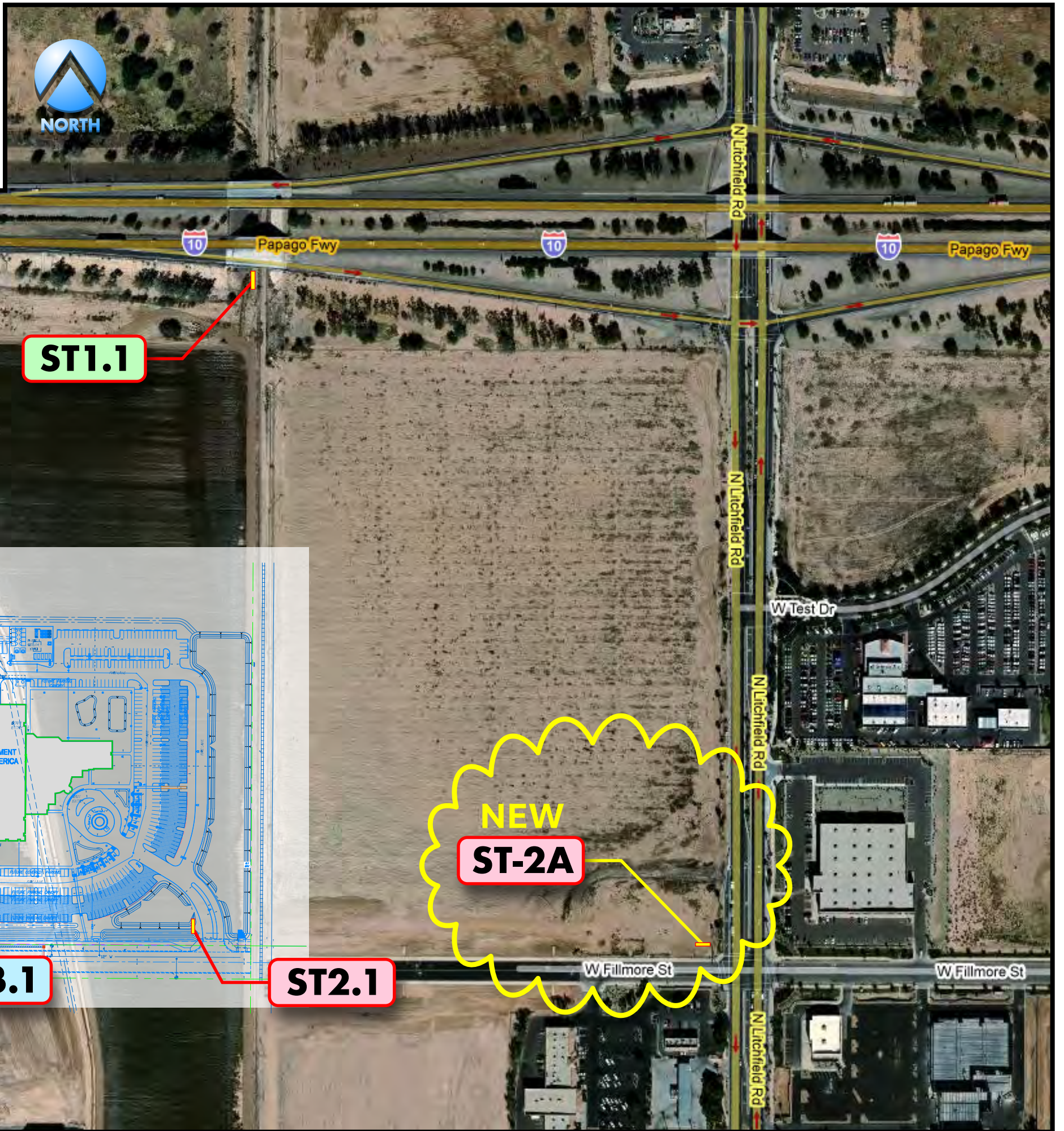
SIGNAGE CONSULTANT:
bleier
INDUSTRIES

**Cancer Treatment Centers of America
Comprehensive Care and Research Center
14200 W. Celebrate Life Way
Goodyear, Arizona**



**Cancer
Treatment
Centers
of America®**

PROJECT:	Western Regional Medical Center Cancer Treatment Centers of America 14200 W. Fillmore St. Goodyear, AZ	DATE:	09/12/08	REVISIONS:	
TITLE:	Overall Freestanding Sign Location Plan	SHEET No.:	SP-1		
DESIGNER:	Dan Horton	SALES:	Paul Bleier	© 2008, BLEIER INDUSTRIES, LTD. This drawing and the ideas expressed herein, remain the confidential property of Bleier Industries, Ltd. This drawing and the ideas contained in it are not to be reproduced, copied or disclosed to any other person or entity without the express written permission of an officer of Bleier Industries, Ltd.	
DESIGN No.:	2008-D-007	SCALE:	NTS		



**AIRPORT GATEWAY CSP
AMENDMENT**

REV 6/2019

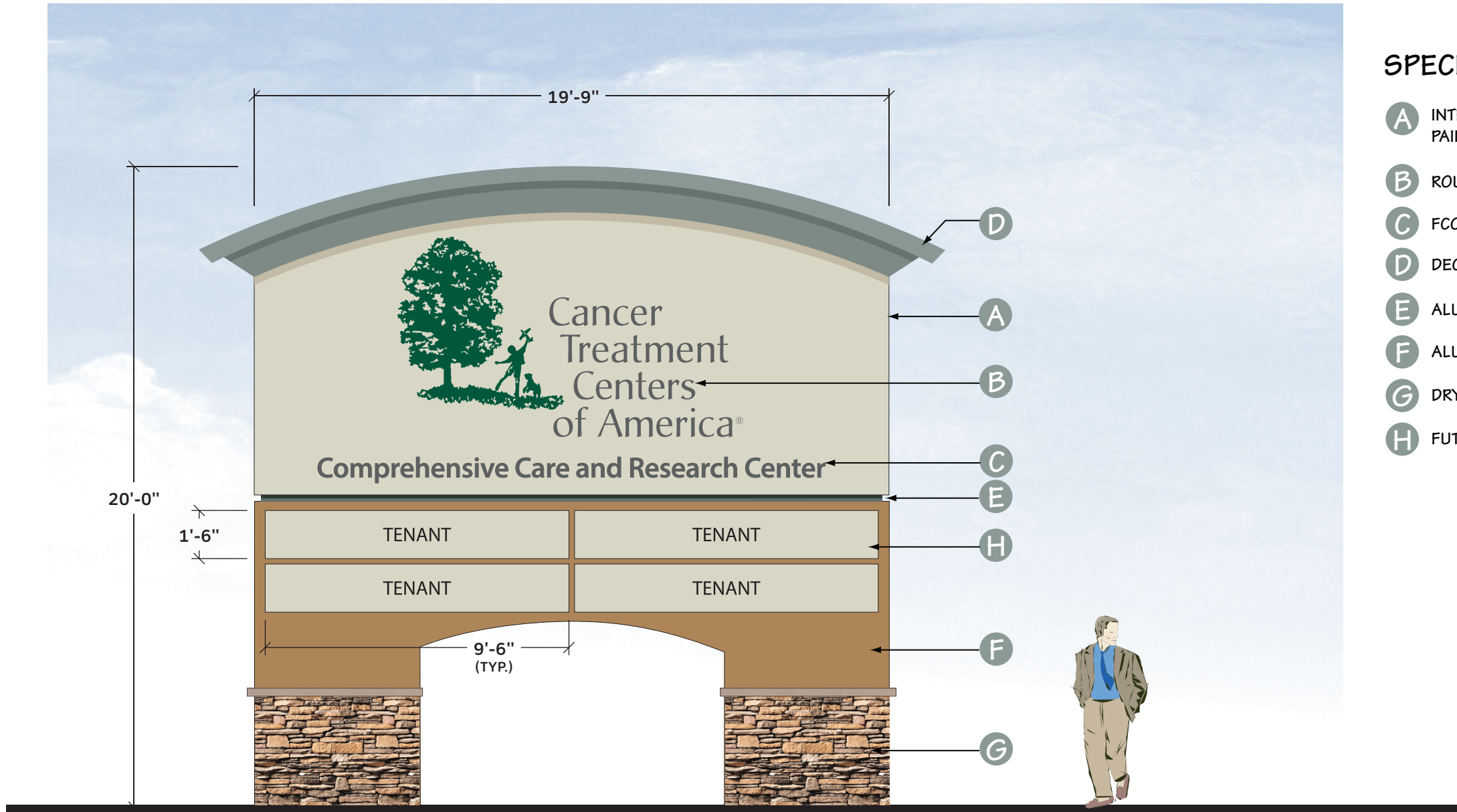
ST3.2

ST2.2

ST3.1

ST2.1

**NEW
ST-2A**



SPECIFICATIONS:

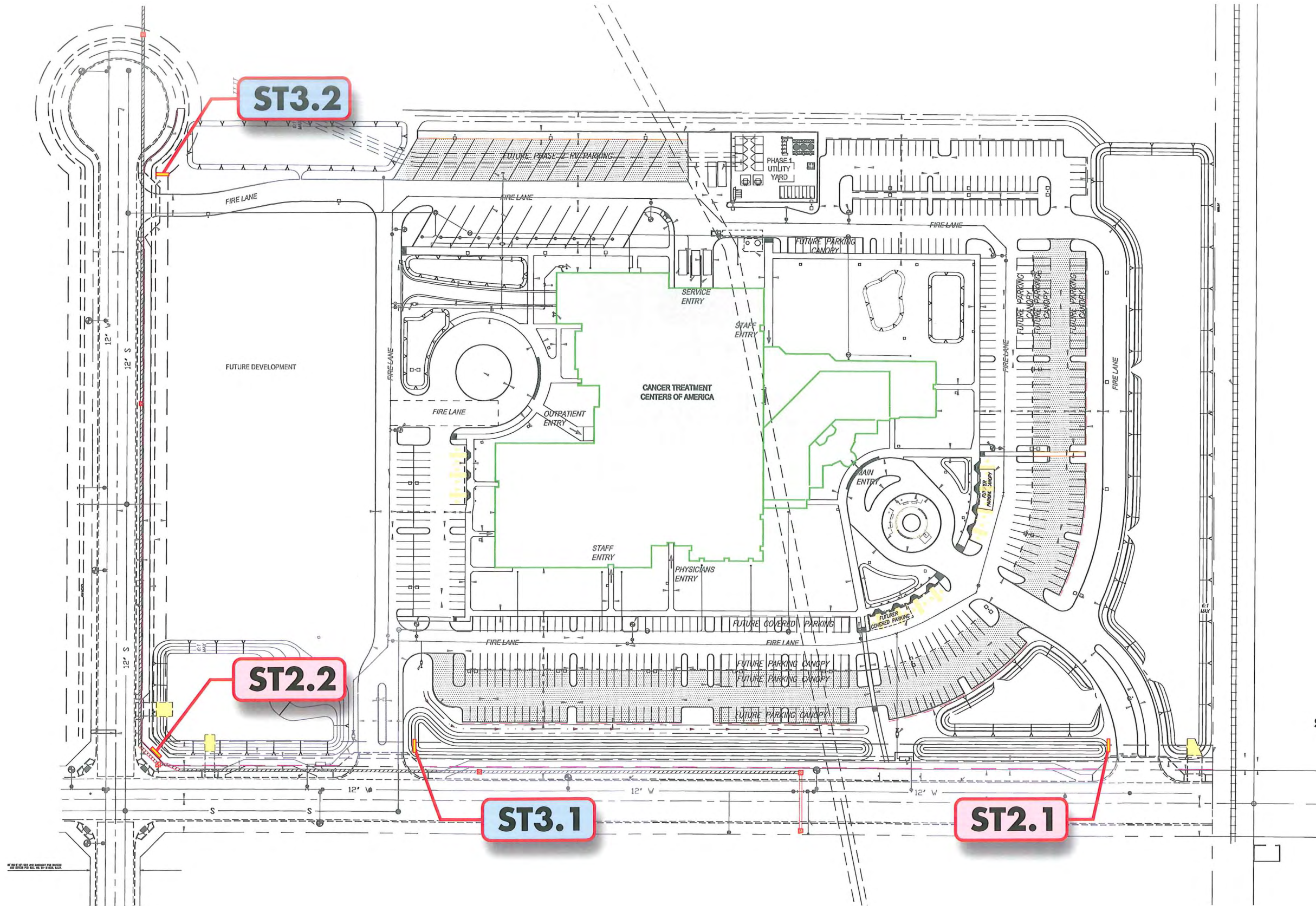
- (A) INTERNALLY ILLUMINATED SIGN CABINET TEXTURED AND PAINTED TO MATCH DRIVIT 449 BUCKSKIN
- (B) ROUTED COPY 1" PUSH THRU W/ 1ST SURFACE APPLIED VINYL OVER ACRYLIC BACK-UP
- (C) FCO PIN MOUNT 1/2" PAINTED ALUMINUM, NON-ILLUMINATED
- (D) DECORATIVE CORNICE TEXTURED AND PAINTED TO MATCH HEMLOCK GREEN
- (E) ALUMINUM REVEAL TEXTURED AND PAINTED TO MATCH HEMLOCK GREEN
- (F) ALUMINUM BASE TEXTURED AND PAINTED TO MATCH DRIVIT 375 SPICE TAN
- (G) DRYSTACK SOUTHERN LEDGESTONE RUSTIC CSV-2055
- (H) FUTURE MULTI-TENANT PANELS PAINTED TO MATCH DRIVIT 449 BUCKSKIN

TYPE 2A MONUMENT SIGN
 Scale: 1/4" = 1'-0"

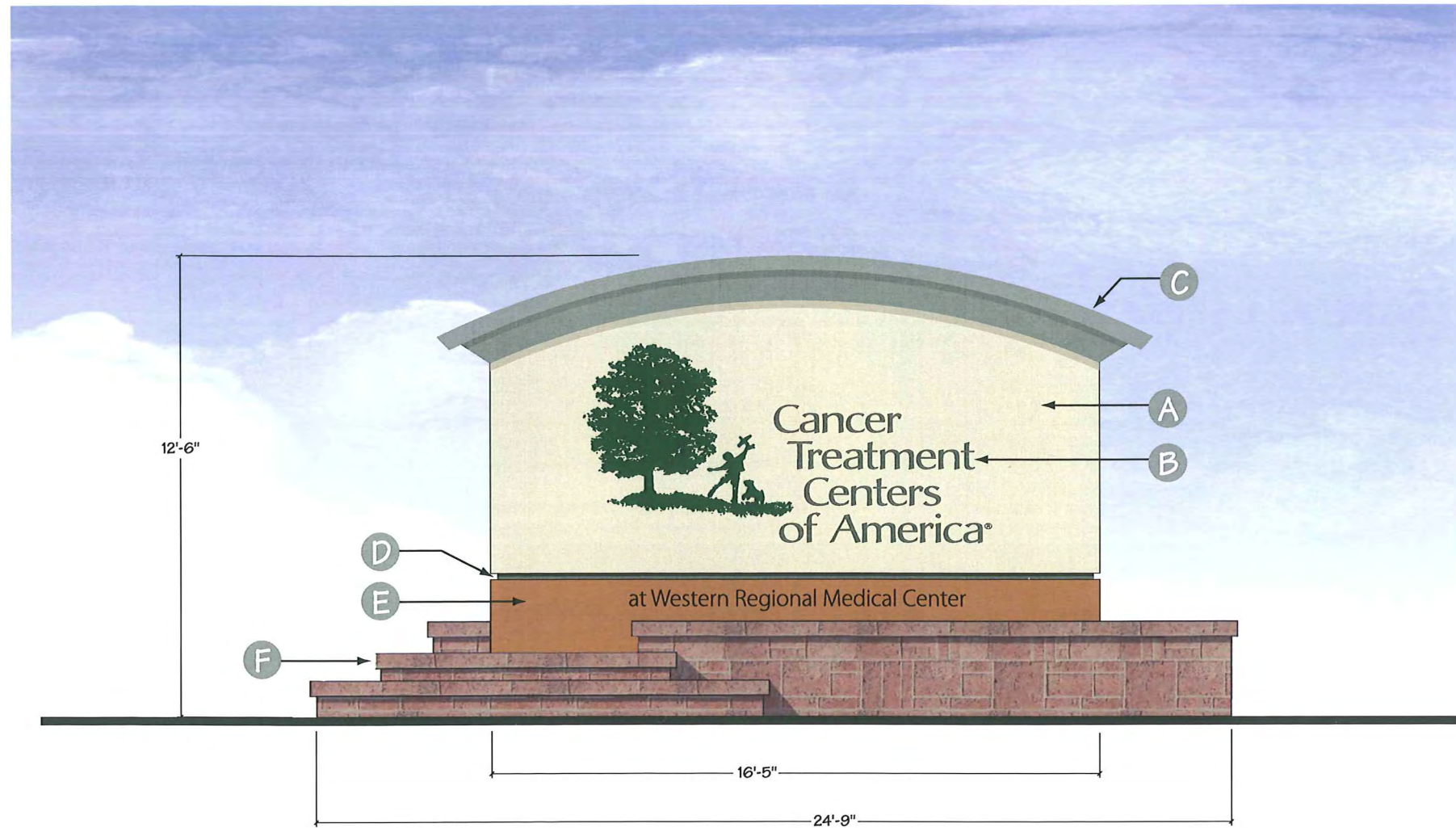
bleier
 INDUSTRIES
 9650 WEST ROOSEVELT STREET
 TOLLESON, ARIZONA 85353
 602-944-3117
 FAX 602-395-0753
 SALES@BLEIERINDUSTRIES.COM

PROJECT:	Cancer Treatment Centers of America 14200 W. Celebrate Life Way Goodyear, Arizona 85338	DATE:	6/13/2019	REVISIONS:	
TITLE:	Type 2A Monument ID Sign	SHEET No:	ST-2A		
DESIGNER:	FMB	SALES:	Paul Bleier	© 2019, BLEIER INDUSTRIES, LTD. This drawing and the ideas expressed herein, remain the confidential property of Bleier Industries, Ltd. This drawing and the ideas contained in it are not to be reproduced, copied or disclosed to any other person or entity without the express written permission of an officer of Bleier Industries, Ltd.	
DESIGN No:	2019-A-026	SCALE:	AS NOTED		

PROJECT:	
Western Regional Medical Center Cancer Treatment Centers of America 14200 W. Fillmore St. Goodyear, AZ	
TITLE:	
Freestanding Sign - Location Plan	
DESIGNER:	SALES:
Dan Horton	Paul Bleier
DESIGN No:	DATE:
2008-D-007	09/12/08
SCALE:	REVISIONS:
AS NOTED	
SHEET No:	
SP-2	
<small>© 2008, BLEIER INDUSTRIES, LTD. This drawing and the ideas expressed herein, remain the confidential property of Bleier Industries, Ltd. This drawing and the ideas contained in it are not to be reproduced, copied or disclosed to any other person or entity without the express written permission of an officer of Bleier Industries, Ltd.</small>	



SCALE: 1" = 120'-0"



TYPE 2.1 - MONUMENT SIGN
SCALE: 1/4" = 1'-0"

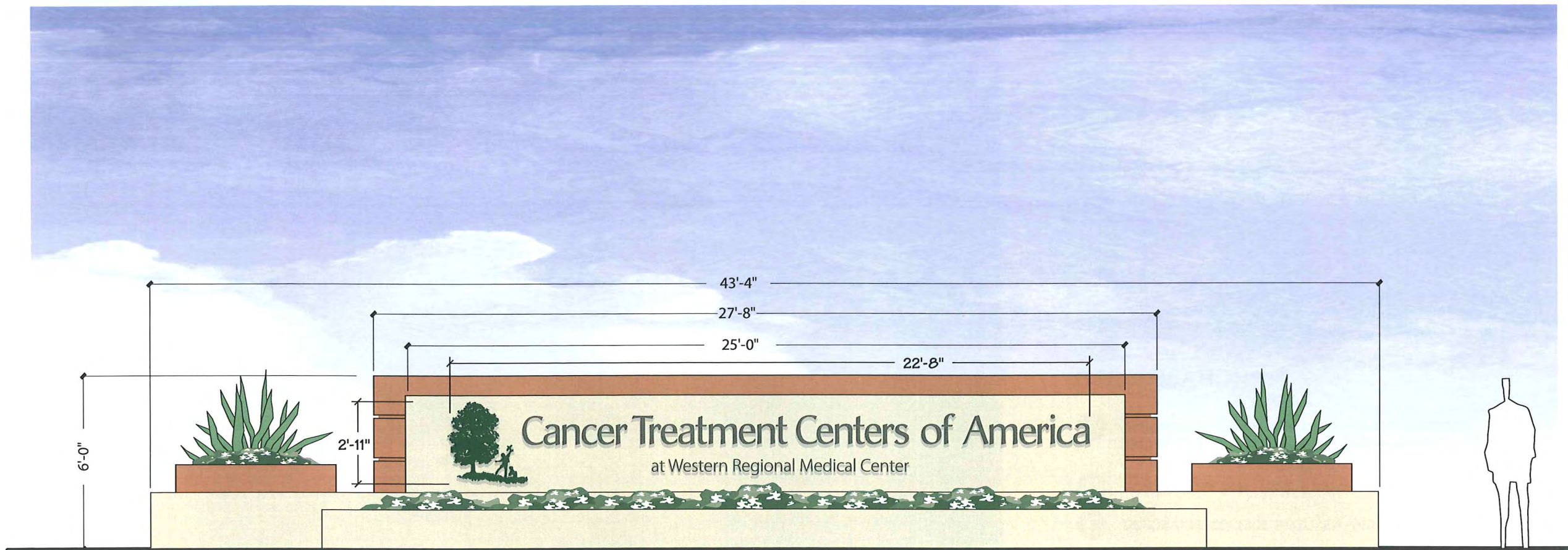
SPECIFICATIONS:

- (A) INTERNALLY ILLUMINATED SIGN CABINET TEXTURED AND PAINTED TO MATCH DRIVIT 449 BUCKSKIN
- (B) ROUTED COPY WITH FIRST SURFACE APPLIED VINYL OVER ACRYLIC BACK-UP
- (C) DECORATIVE CORNICE TEXTURED AND PAINTED TO MATCH HEMLOCK GREEN
- (D) ALUMINUM REVEAL TEXTURED AND PAINTED TO MATCH HEMLOCK GREEN
- (E) ALUMINUM POLE COVER TEXTURED AND PAINTED TO MATCH DRIVIT 375 SPICE TAN
- (F) DECORATIVE STONE/TILE BASE TO MATCH BUILDING PALETTE

bleier
INDUSTRIES

9650 WEST ROOSEVELT STREET
TOLLESON, ARIZONA 85353
602-944-3117
FAX 602-395-0753
SALES@BLEIERINDUSTRIES.COM

PROJECT:	DATE:	REVISIONS:
Western Regional Medical Center Cancer Treatment Centers of America 14200 W. Fillmore St. Goodyear, AZ	09/12/08	
TITLE:	SHEET No.:	
Type 2.1 - Monument Sign	ST-2.1	
DESIGNER:	SALES:	© 2008, BLEIER INDUSTRIES, LTD. This drawing and the ideas expressed herein, remain the confidential property of Bleier Industries, Ltd. This drawing and the ideas contained in it are not to be reproduced, copied or disclosed to any other person or entity without the express written permission of an officer of Bleier Industries, Ltd.
Dan Horton	Paul Bleier	
DESIGN No.:	SCALE:	
2008-D-007	AS NOTED	



TYPE 2.2 - MONUMENT SIGN
SCALE: 1/4" = 1'-0"

Sizes

Overall Height: 6'-0"
ID Area: 25'-0"x3'-3" 80 s.f.

Construction

Structure: Masonry fabrication.
ID Letters: Reverse pan channel dimensional letters, pin mounted off surface.

Colors

Structure: Sand Dollar and S'mores
ID Letters: S'mores

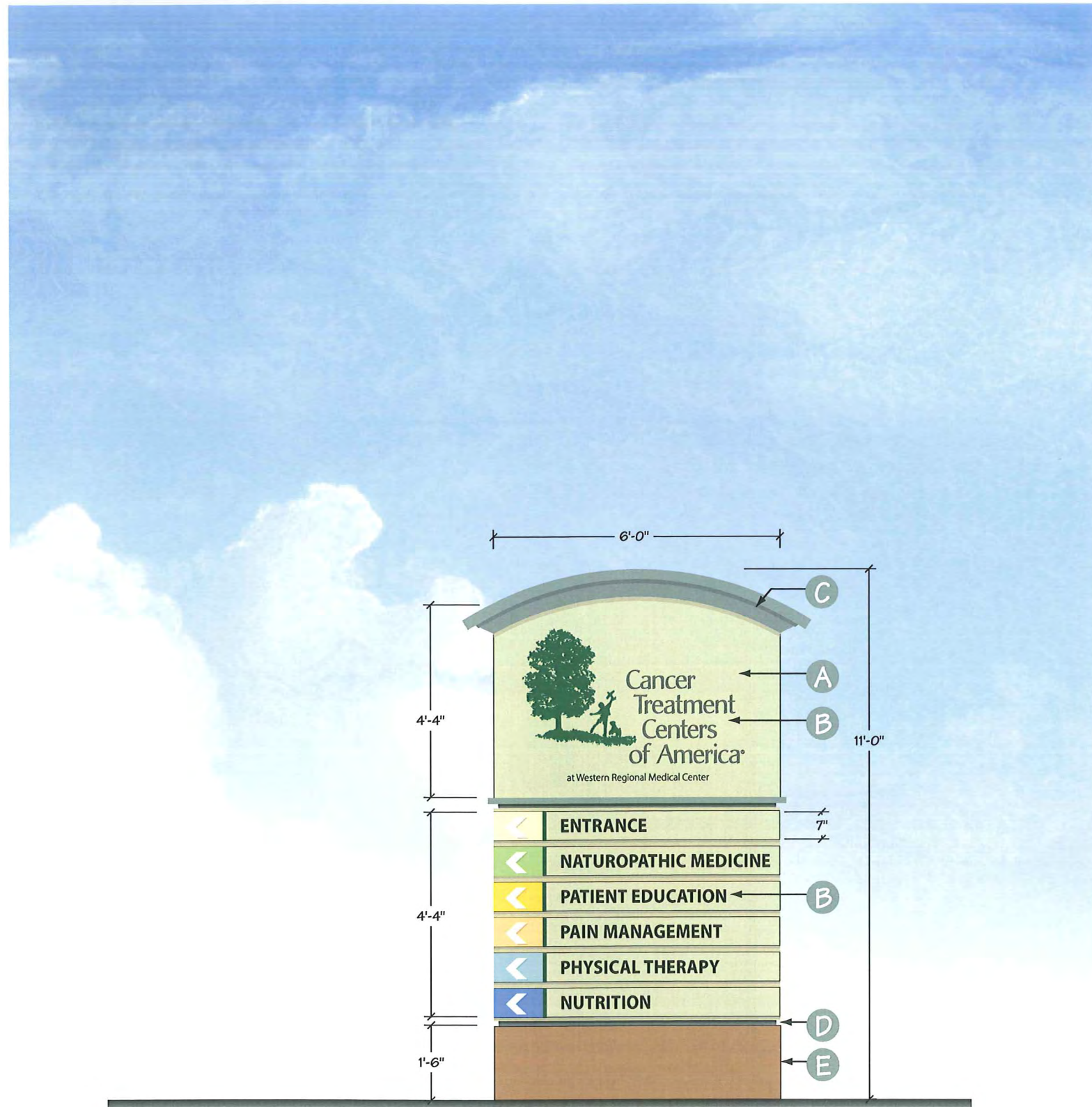
Illumination

Halo, ground up-lit or combination

bleier
INDUSTRIES

9650 WEST ROOSEVELT STREET
TOLLESON, ARIZONA 85353
602-944-3117
FAX 602-395-0753
SALES@BLEIERINDUSTRIES.COM

PROJECT:	Western Regional Medical Center Cancer Treatment Centers of America 14200 W. Fillmore St. Goodyear, AZ	DATE:	09/12/08	REVISIONS:	
TITLE:	Type 2.2 - Monument Sign	SHEET No.:	ST-2.2		
DESIGNER:	Dan Horton	SALES:	Paul Bleier	© 2008, BLEIER INDUSTRIES, LTD. This drawing and the ideas expressed herein, remain the confidential property of Bleier Industries, Ltd. This drawing and the ideas contained in it are not to be reproduced, copied or disclosed to any other person or entity without the express written permission of an officer of Bleier Industries, Ltd.	
DESIGN No.:	2008-D-007	SCALE:	AS NOTED		



TYPE 3.1 - DIRECTIONAL SIGN
SCALE: 3/8" = 1'-0"

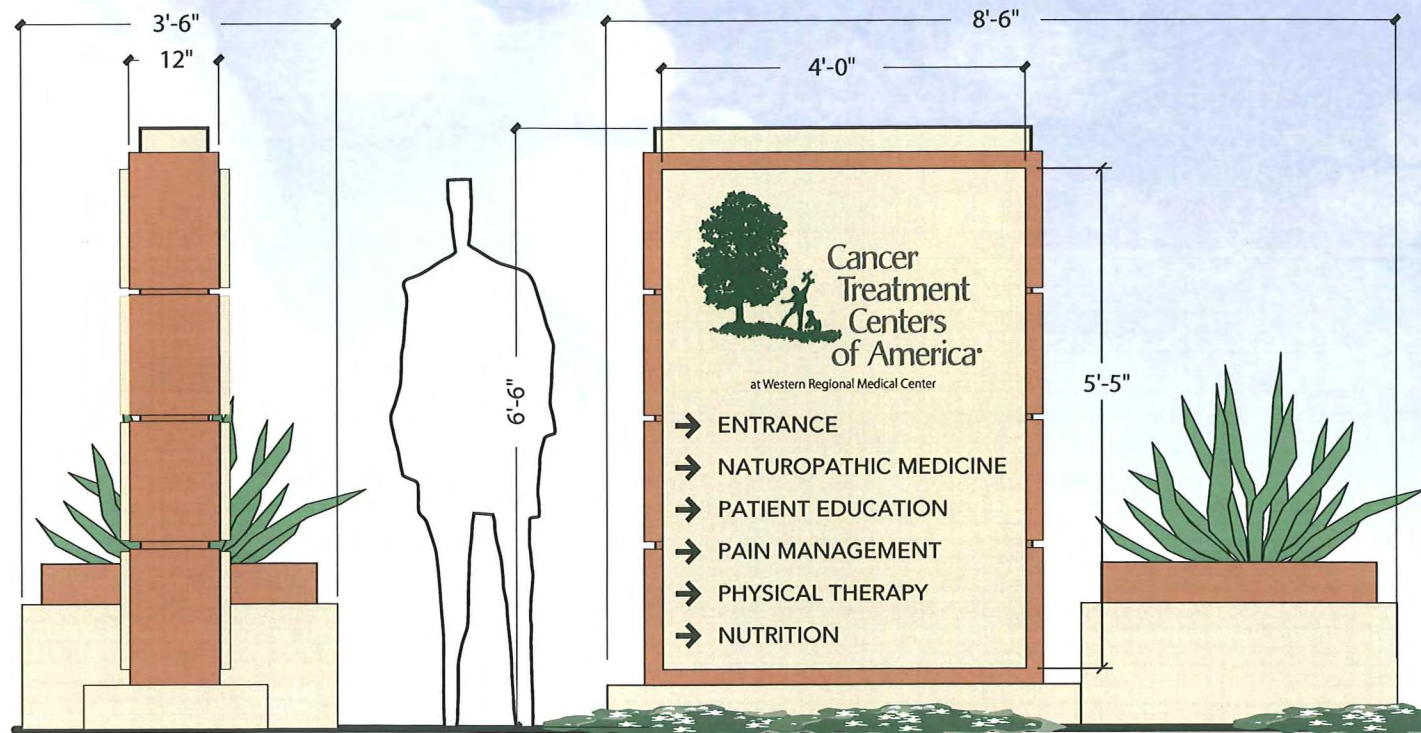
SPECIFICATIONS:

- A** INTERNALLY ILLUMINATED SIGN CABINET TEXTURED AND PAINTED TO MATCH DRIVIT 449 BUCKSKIN
- B** ROUTED COPY WITH FIRST SURFACE APPLIED VINYL OVER ACRYLIC BACK-UP
- C** DECORATIVE CORNICE TEXTURED AND PAINTED TO MATCH HEMLOCK GREEN
- D** ALUMINUM REVEAL TEXTURED AND PAINTED TO MATCH HEMLOCK GREEN
- E** ALUMINUM POLE COVER TEXTURED AND PAINTED TO MATCH DRIVIT 375 SPICE TAN

bleier
INDUSTRIES

9650 WEST ROOSEVELT STREET
TOLLESON, ARIZONA 85353
602-944-3117
FAX 602-395-0753
SALES@BLEIERINDUSTRIES.COM

PROJECT: Western Regional Medical Center Cancer Treatment Centers of America 14200 W. Fillmore St. Goodyear, AZ		DATE: 09/12/08	REVISIONS:
TITLE: Type 3 - Directional Pole Sign		SHEET No: ST-3.1	
DESIGNER: Dan Horton	SALES: Paul Bleier	© 2008, BLEIER INDUSTRIES, LTD. This drawing and the ideas expressed herein, remain the confidential property of Bleier Industries, Ltd. This drawing and the ideas contained in it are not to be reproduced, copied or disclosed to any other person or entity without the express written permission of an officer of Bleier Industries, Ltd.	
DESIGN No: 2008-D-007	SCALE: AS NOTED		



TYPE 3.2 - DIRECTIONAL SIGN
SCALE: 3/8" = 1'-0"

Sizes

Overall Height: 6'-6"
Panels: 4'-0"x7'-3" 4 at 5 s.f. (29 s.f.)

Construction

Base: Masonry fabrication.
Cabinet/Panels: Aluminum fabrication. Routed in
Information: Reflective vinyl applied to cabinet or routed copy with acrylic back-up, TBD.

Colors

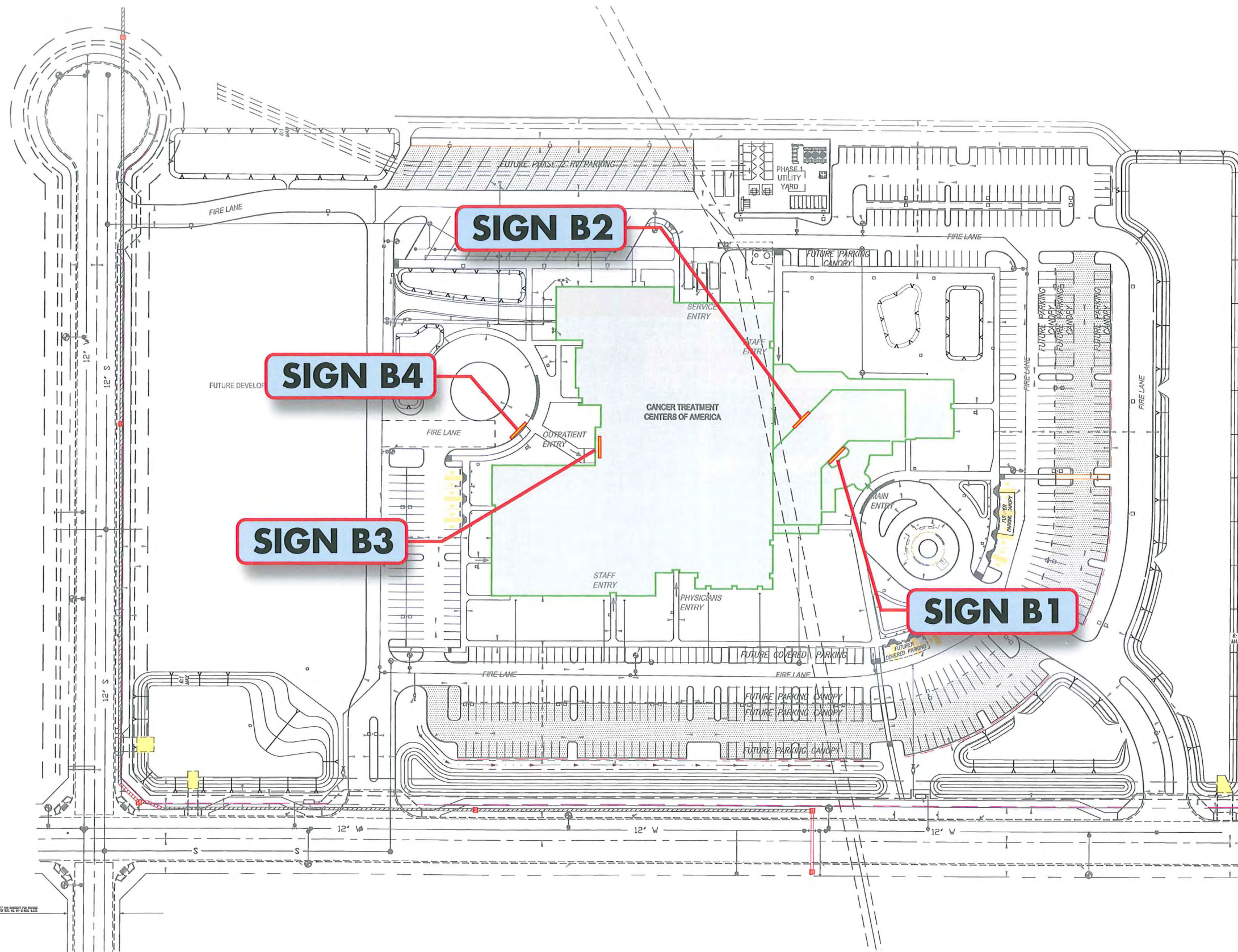
Structure: Sand Dollar and S'mores
Panels: Sand Dollar
Information: Brown or black reflective vinyl.

Illumination Internal or Ground up-lit or none, TBD

bleier
INDUSTRIES

9650 WEST ROOSEVELT STREET
TOLLESON, ARIZONA 85353
602-944-3117
FAX 602-395-0753
SALES@BLEIERINDUSTRIES.COM

PROJECT: Western Regional Medical Center Cancer Treatment Centers of America 14200 W. Fillmore St. Goodyear, AZ	DATE: 09/12/08	REVISIONS:
TITLE: Type 3.2 - Directional Pole Sign	SHEET No: ST-3.2	
DESIGNER: Dan Horton	SALES: Paul Bleier	© 2008, BLEIER INDUSTRIES, LTD. This drawing and the ideas expressed herein, remain the confidential property of Bleier Industries, Ltd. This drawing and the ideas contained in it are not to be reproduced, copied or disclosed to any other person or entity without the express written permission of an officer of Bleier Industries, Ltd.
DESIGN No: 2008-D-007	SCALE: AS NOTED	



bleier
INDUSTRIES

9650 WEST ROOSEVELT STREET
TOLLESON, ARIZONA 85353
602-944-3117
FAX 602-395-0753
SALES@BLEIERINDUSTRIES.COM

PROJECT:	
Western Regional Medical Center Cancer Treatment Centers of America 14200 W. Fillmore St. Goodyear, AZ	
TITLE:	
Building Sign - Location Plan	
DESIGNER:	SALES:
Dan Horton	Paul Bleier
DESIGN No:	DATE:
2008-D-007	08/18/08
SCALE:	REVISIONS:
AS NOTED	
SHEET No:	
SP1-B5	
<small>© 2008, BLEIER INDUSTRIES, LTD. This drawing and the ideas expressed herein, remain the confidential property of Bleier Industries, Ltd. This drawing and the ideas contained in it are not to be reproduced, copied or disclosed to any other person or entity without the express written permission of an officer of Bleier Industries, Ltd.</small>	



SCALE: 1" = 120'-0"



SIGN B1

Cancer Treatment Centers of America

Main Entry

WESTERN REGIONAL MEDICAL CENTER
CANCER TREATMENT CENTERS OF AMERICA

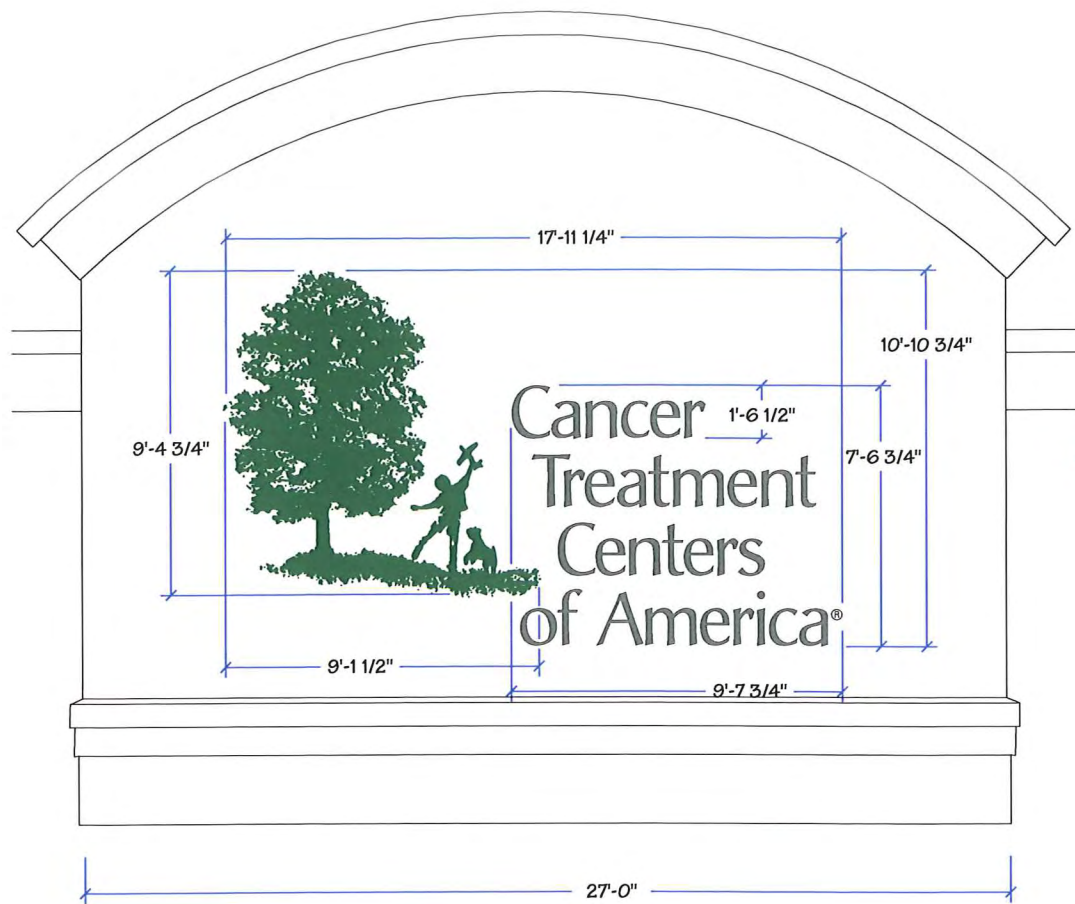


bleier
INDUSTRIES

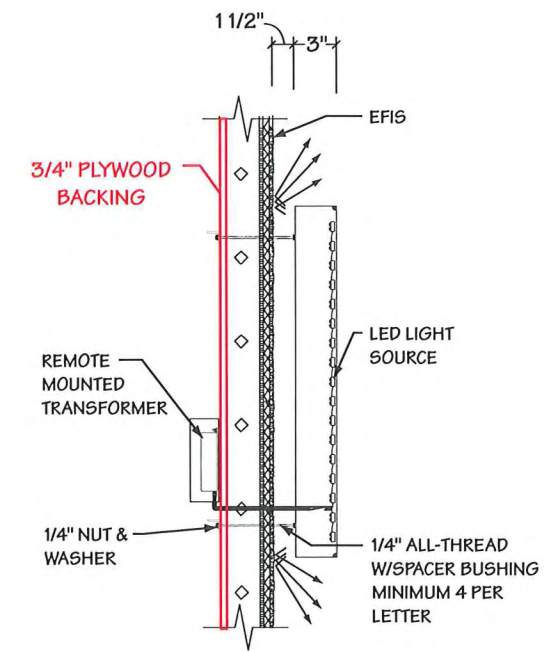
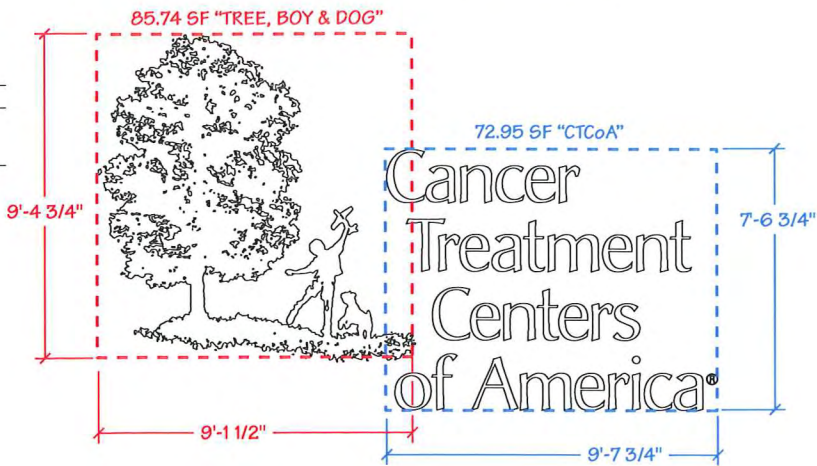
9650 WEST ROOSEVELT STREET
 TOLLESON, ARIZONA 85353
 602-944-3117
 FAX 602-395-0753
 SALES@BLEIERINDUSTRIES.COM

PROJECT:	Western Regional Medical Center Cancer Treatment Centers of America 14200 W. Fillmore St. Goodyear, AZ	DATE:	08/19/08	REVISIONS:	
TITLE:	RENDERING Building Elevation @ Main Entry	SHEET No.:	ELVR-SE		
DESIGNER:	Dan Horton	SALES:	Paul Bleier	© 2008, BLEIER INDUSTRIES, LTD. This drawing and the ideas expressed herein, remain the confidential property of Bleier Industries, Ltd. This drawing and the ideas contained in it are not to be reproduced, copied or disclosed to any other person or entity without the express written permission of an officer of Bleier Industries, Ltd.	
DESIGN No.:	2008-D-007	SCALE:	NTS		

PROJECT:	
Western Regional Medical Center Cancer Treatment Centers of America 14200 W. Fillmore St. Goodyear, AZ	
TITLE:	
Building Sign - Elevation	
DESIGNER:	SALES:
Dan Horton	Paul Bleier
DESIGN No:	DATE:
2008-D-007	08/19/08
SCALE:	REVISIONS:
AS NOTED	
SHEET No:	
ELV-SE1	
<small>© 2008, BLEIER INDUSTRIES, LTD. This drawing and the ideas expressed herein, remain the confidential property of Bleier Industries, Ltd. This drawing and the ideas contained in it are not to be reproduced, copied or disclosed to any other person or entity without the express written permission of an officer of Bleier Industries, Ltd.</small>	



85.74 SF "TREE, BOY & DOG"
72.95 SF "CTCoA"
158.69 SF TOTAL



2 SIGN B1 - ISOLATION - NORTHWEST ELEVATION @ GUEST ACCOMODATION - SCALE: 3/16" = 1'-0"

3 TYPICAL REVERSE PAN CHANNEL LETTER - SCALE: NTS



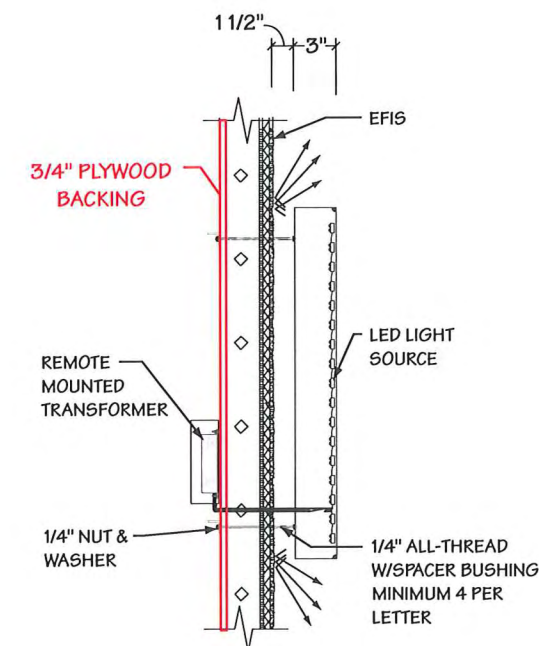
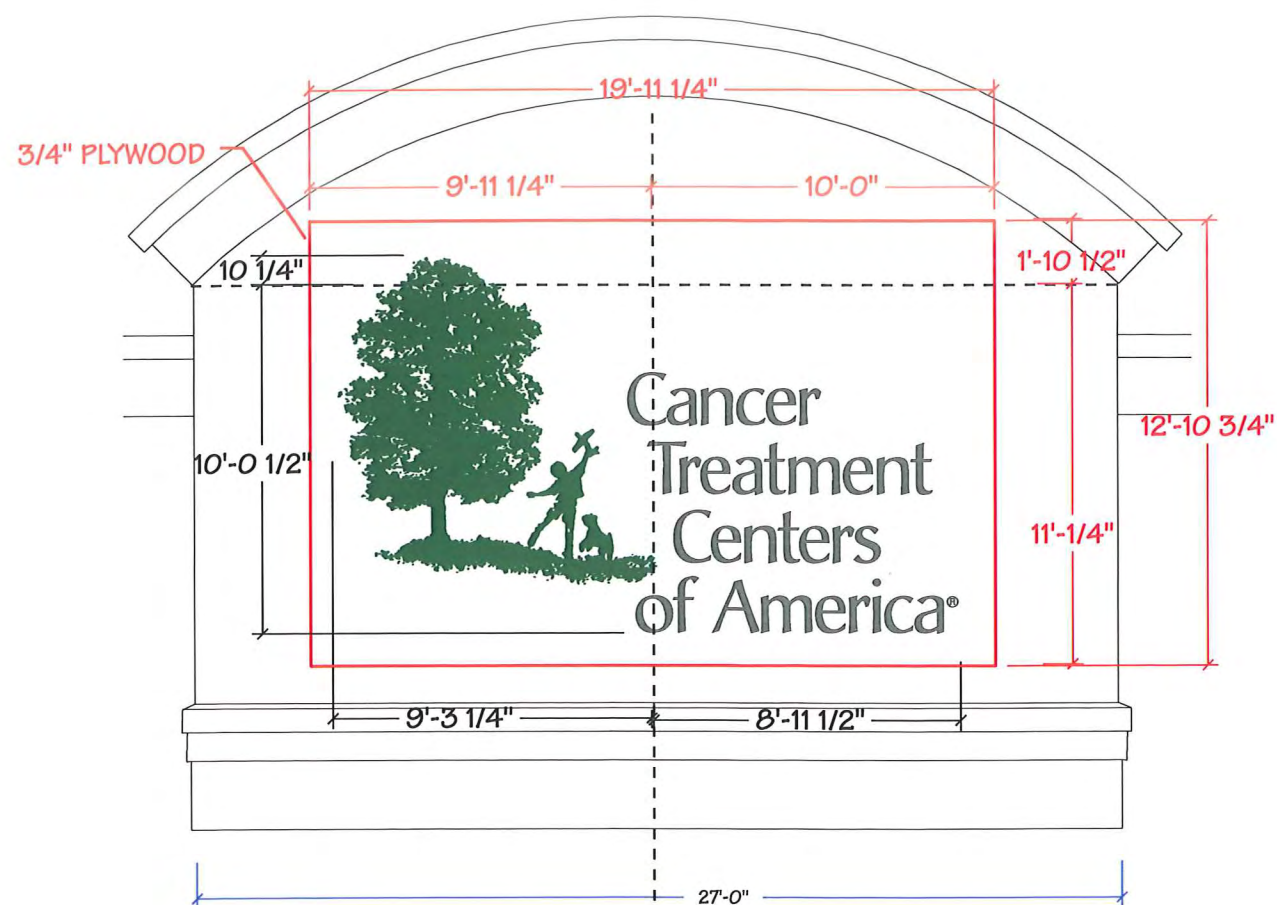
SIGN B1 SPECIFICATIONS:
HALO-ILLUMINATED REVERSE
PAN CHANNEL LETTER

LETTER FACE IS OPAQUE PAINTED METAL

OPEN LETTER BACK ALLOWS LIGHT TO PASS
OUT THE BACK OF LETTER TO REFLECT OFF
OF WALL SURFACE BEHIND

1 SOUTHEAST ELEVATION @ GUEST ACCOMODATION - SCALE: 1" = 30'-0"

PROJECT:	
Western Regional Medical Center Cancer Treatment Centers of America 14200 W. Fillmore St. Goodyear, AZ	
TITLE:	
Building Sign - Elevation	
DESIGNER:	SALES:
Dan Horton	Paul Bleier
DESIGN No:	DATE:
2008-D-007	08/19/08
SCALE:	REVISIONS:
AS NOTED	
SHEET No:	
ELV-SE1-PW	
<small>© 2008, BLEIER INDUSTRIES, LTD. This drawing and the ideas expressed herein, remain the confidential property of Bleier Industries, Ltd. This drawing and the ideas contained in it are not to be reproduced, copied or disclosed to any other person or entity without the express written permission of an officer of Bleier Industries, Ltd.</small>	



② SIGN B1 - ISOLATION - NORTHWEST ELEVATION @ GUEST ACCOMODATION - SCALE: 3/16" = 1'-0"

③ TYPICAL REVERSE PAN CHANNEL LETTER - SCALE: NTS

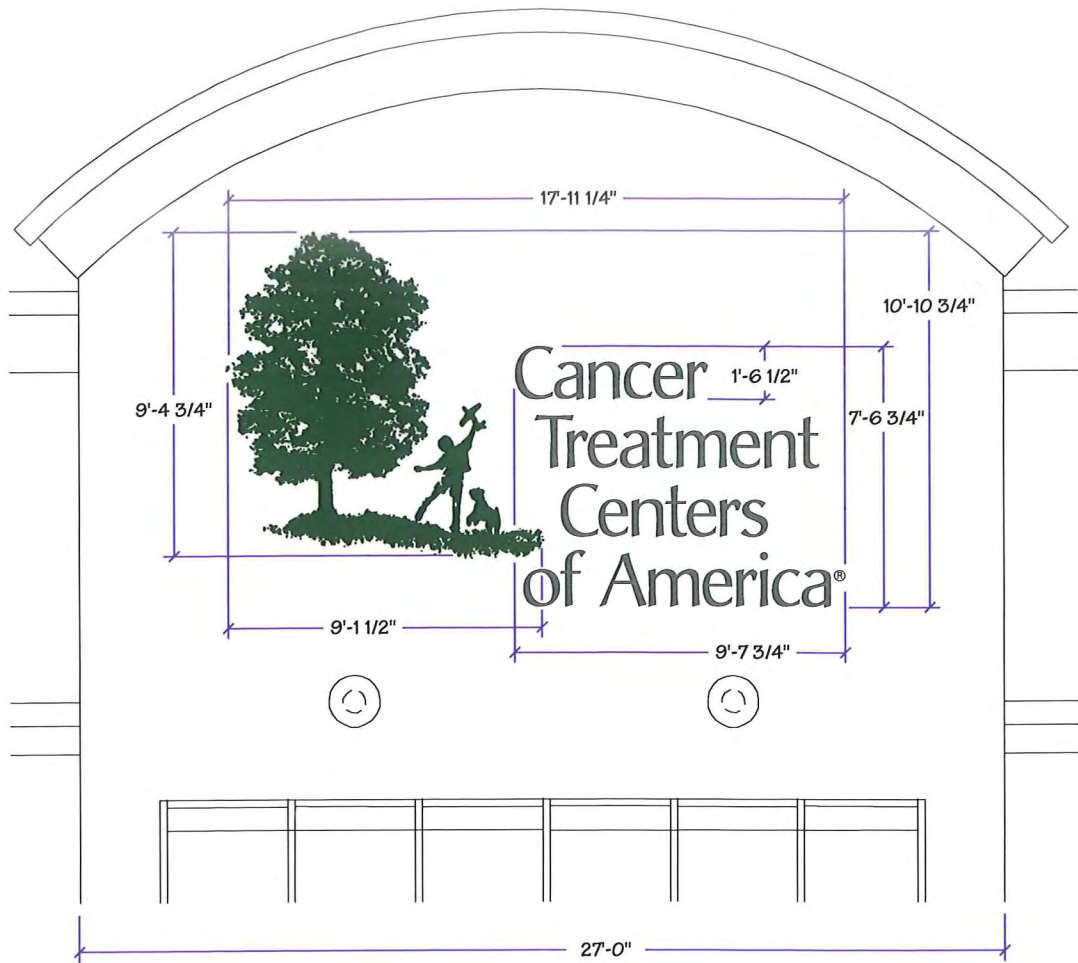


① SOUTHEAST ELEVATION @ GUEST ACCOMODATION - SCALE: 1" = 30'-0"

SIGN B1 SPECIFICATIONS:
HALO-ILLUMINATED REVERSE
PAN CHANNEL LETTER

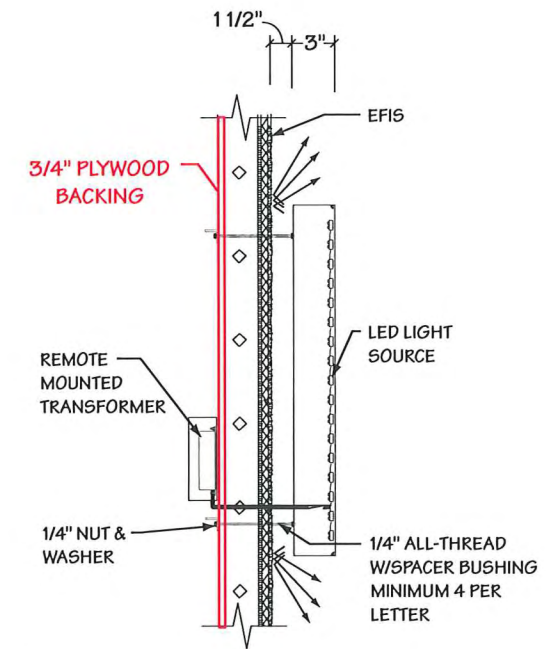
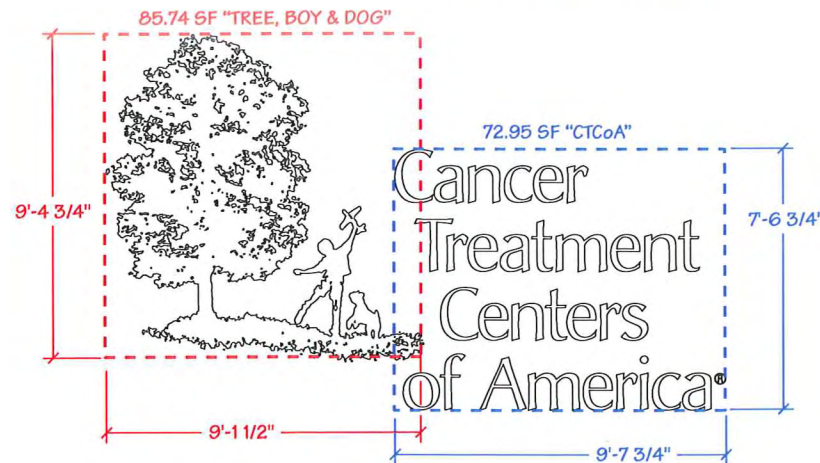
LETTER FACE IS OPAQUE PAINTED METAL

OPEN LETTER BACK ALLOWS LIGHT TO PASS
OUT THE BACK OF LETTER TO REFLECT OFF
OF WALL SURFACE BEHIND



85.74 SF "TREE, BOY & DOG"
72.95 SF "CTCoA"

158.69 SF TOTAL



bleier
INDUSTRIES

9650 WEST ROOSEVELT STREET
TOLLESON, ARIZONA 85353
602-944-3117
FAX 602-395-0753
SALES@BLEIERINDUSTRIES.COM

PROJECT:	
Western Regional Medical Center Cancer Treatment Centers of America 14200 W. Fillmore St. Goodyear, AZ	
TITLE:	
Building Sign - Elevation	
DESIGNER:	SALES:
Dan Horton	Paul Bleier
DESIGN No.:	DATE:
2008-D-007	08/19/08
SCALE:	REVISIONS:
AS NOTED	
SHEET No.:	
ELY-NW1	
© 2008, BLEIER INDUSTRIES, LTD. This drawing and the ideas expressed herein, remain the confidential property of Bleier Industries, Ltd. This drawing and the ideas contained in it are not to be reproduced, copied or disclosed to any other person or entity without the express written permission of an officer of Bleier Industries, Ltd.	

② SIGN B2 - ISOLATION - NORTHWEST ELEVATION @ GUEST ACCOMODATION - SCALE: 3/16" = 1'-0"

③ TYPICAL REVERSE PAN CHANNEL LETTER - SCALE: NTS



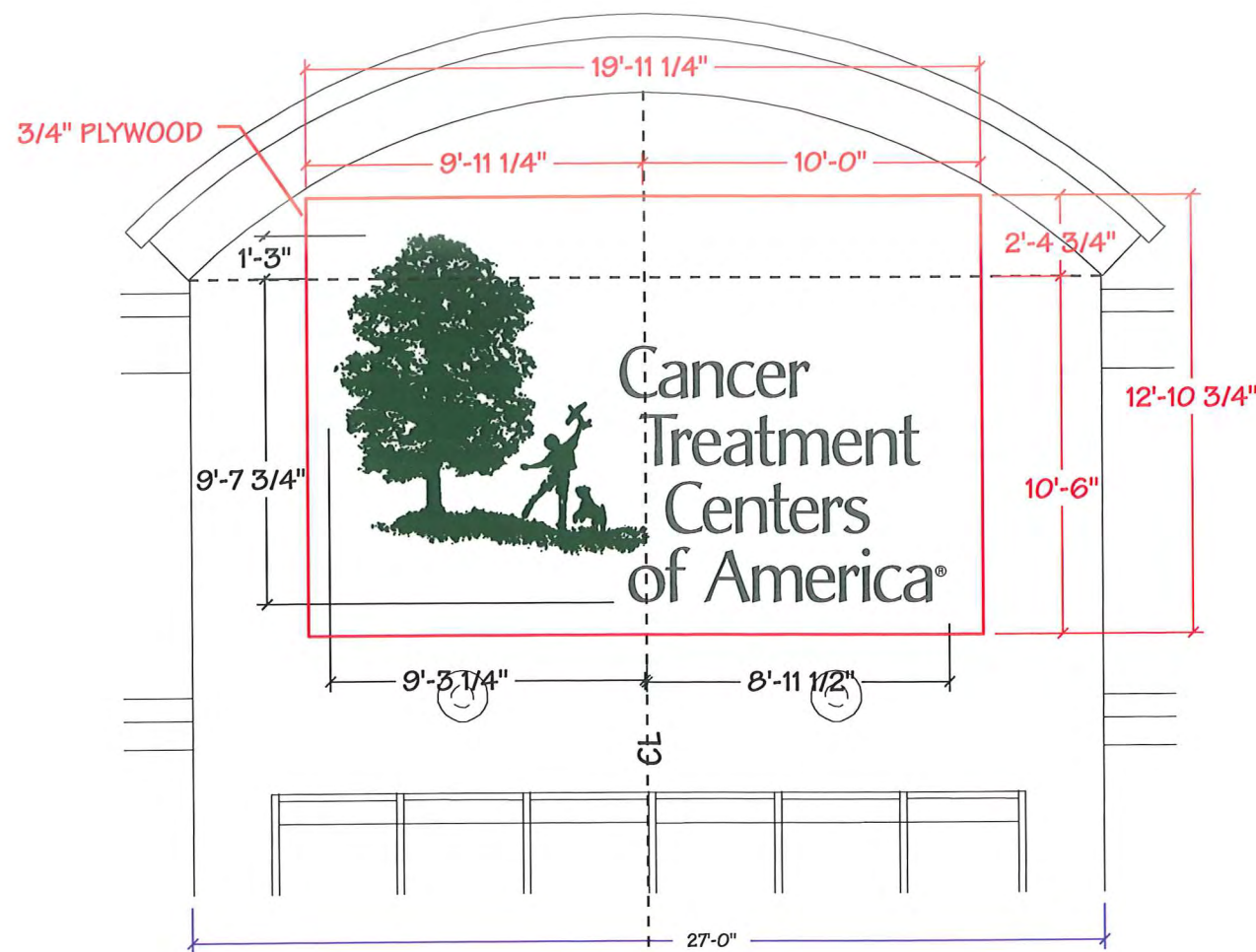
① NORTHWEST ELEVATION @ GUEST ACCOMODATION - SCALE: 1" = 30'-0"

SIGN B2 SPECIFICATIONS:
HALO-ILLUMINATED REVERSE
PAN CHANNEL LETTER

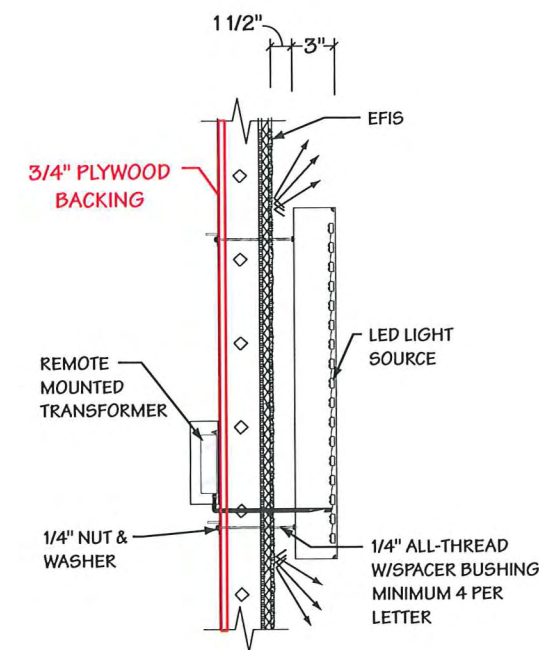
LETTER FACE IS OPAQUE PAINTED METAL

OPEN LETTER BACK ALLOWS LIGHT TO PASS
OUT THE BACK OF LETTER TO REFLECT OFF
OF WALL SURFACE BEHIND

PROJECT:	
Western Regional Medical Center Cancer Treatment Centers of America 14200 W. Fillmore St. Goodyear, AZ	
TITLE:	
Building Sign - Elevation	
DESIGNER:	SALES:
Dan Horton	Paul Bleier
DESIGN No:	DATE:
2008-D-007	08/19/08
SCALE:	REVISIONS:
A5 NOTED	
SHEET No:	
ELV-NW1-PW	
<small>© 2008, BLEIER INDUSTRIES, LTD. This drawing and the ideas expressed herein, remain the confidential property of Bleier Industries, Ltd. This drawing and the ideas contained in it are not to be reproduced, copied or disclosed to any other person or entity without the express written permission of an officer of Bleier Industries, Ltd.</small>	



② SIGN B2 - ISOLATION - NORTHWEST ELEVATION @ GUEST ACCOMODATION - SCALE: 3/16" = 1'-0"



③ TYPICAL REVERSE PAN CHANNEL LETTER - SCALE: NTS



① NORTHWEST ELEVATION @ GUEST ACCOMODATION - SCALE: 1" = 30'-0"

SIGN B2 SPECIFICATIONS:
HALO-ILLUMINATED REVERSE
PAN CHANNEL LETTER

LETTER FACE IS OPAQUE PAINTED METAL

OPEN LETTER BACK ALLOWS LIGHT TO PASS
OUT THE BACK OF LETTER TO REFLECT OFF
OF WALL SURFACE BEHIND



Outpatient Entry

WESTERN REGIONAL MEDICAL CENTER
CANCER TREATMENT CENTERS OF AMERICA

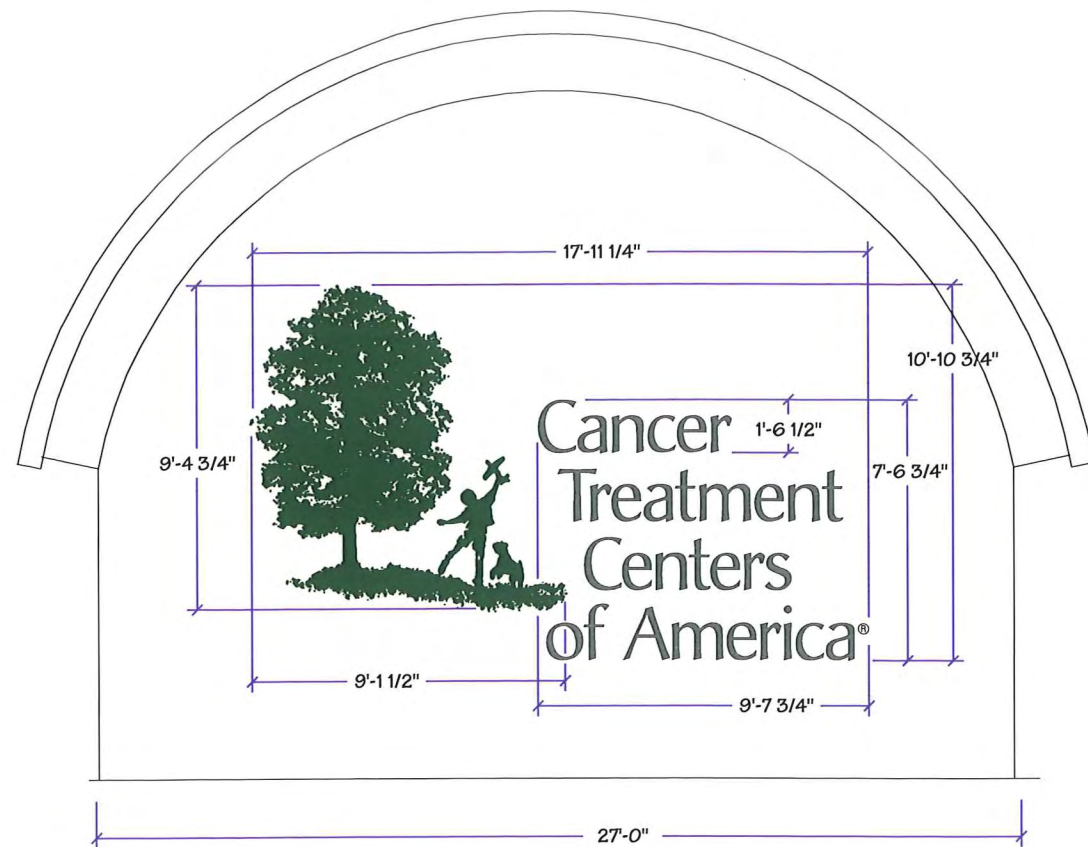


bleier
INDUSTRIES

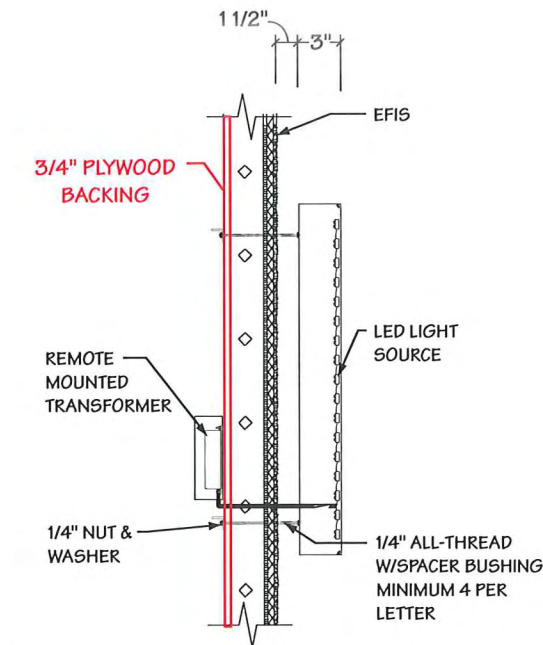
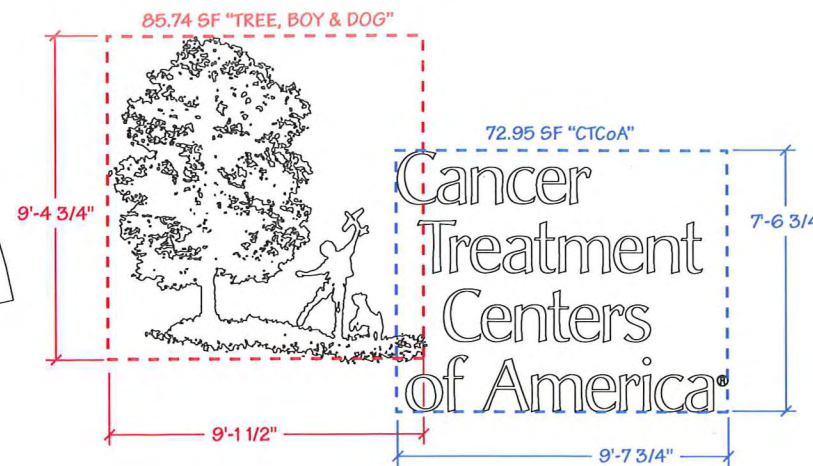
9650 WEST ROOSEVELT STREET
 TOLLESON, ARIZONA 85353
 602-944-3117
 FAX 602-395-0753
 SALES@BLEIERINDUSTRIES.COM

PROJECT:	Western Regional Medical Center Cancer Treatment Centers of America 14200 W. Fillmore St. Goodyear, AZ	DATE:	08/19/08	REVISIONS:	
TITLE:	RENDERING Building Elevation @ Outpatient Entry	SHEET No.:	ELVR-W		
DESIGNER:	Dan Horton	SALES:	Paul Bleier	© 2008, BLEIER INDUSTRIES, LTD. This drawing and the ideas expressed herein, remain the confidential property of Bleier Industries, Ltd. This drawing and the ideas contained in it are not to be reproduced, copied or disclosed to any other person or entity without the express written permission of an officer of Bleier Industries, Ltd.	
DESIGN No.:	2008-D-007	SCALE:	NTS		

PROJECT:	
Western Regional Medical Center Cancer Treatment Centers of America 14200 W. Fillmore St. Goodyear, AZ	
TITLE:	
Building Sign - Elevation	
DESIGNER:	SALES:
Dan Horton	Paul Bleier
DESIGN No.:	DATE:
2008-D-007	08/19/08
SCALE:	REVISIONS:
A5 NOTED	
SHEET No.:	
ELV-W1	
© 2008, BLEIER INDUSTRIES, LTD. This drawing and the ideas expressed herein, remain the confidential property of Bleier Industries, Ltd. This drawing and the ideas contained in it are not to be reproduced, copied or disclosed to any other person or entity without the express written permission of an officer of Bleier Industries, Ltd.	



85.74 SF "TREE, BOY & DOG"
72.95 SF "CTCoA"
158.69 SF TOTAL

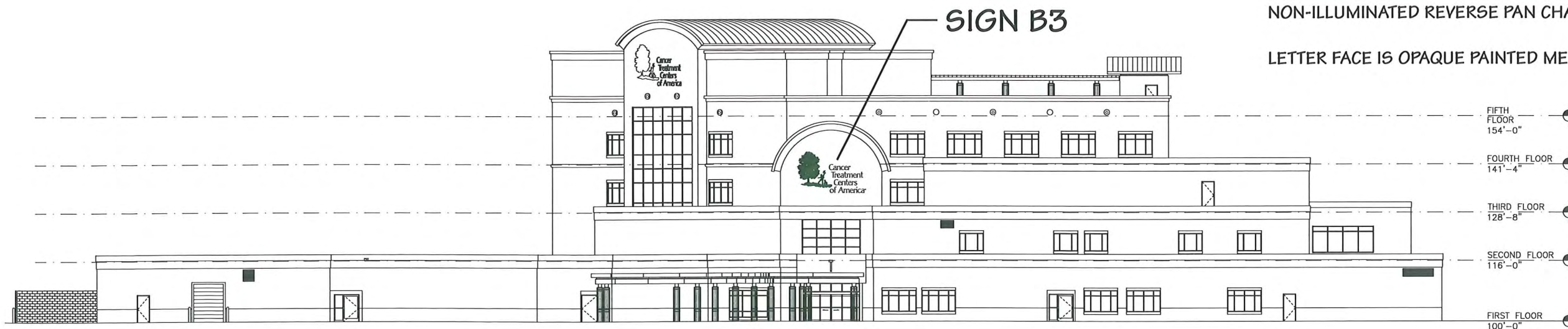


3 TYPICAL REVERSE PAN CHANNEL LETTER - SCALE: NTS

2 SIGN B3 - ISOLATION - WEST ELEVATION - SCALE: 3/16" = 1'-0"

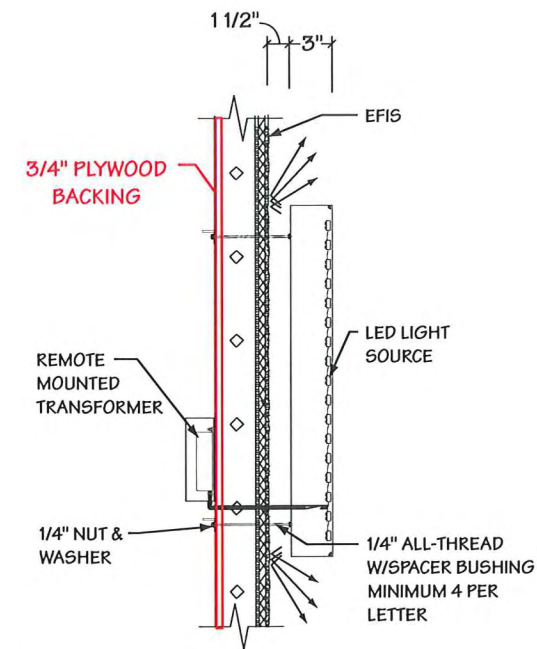
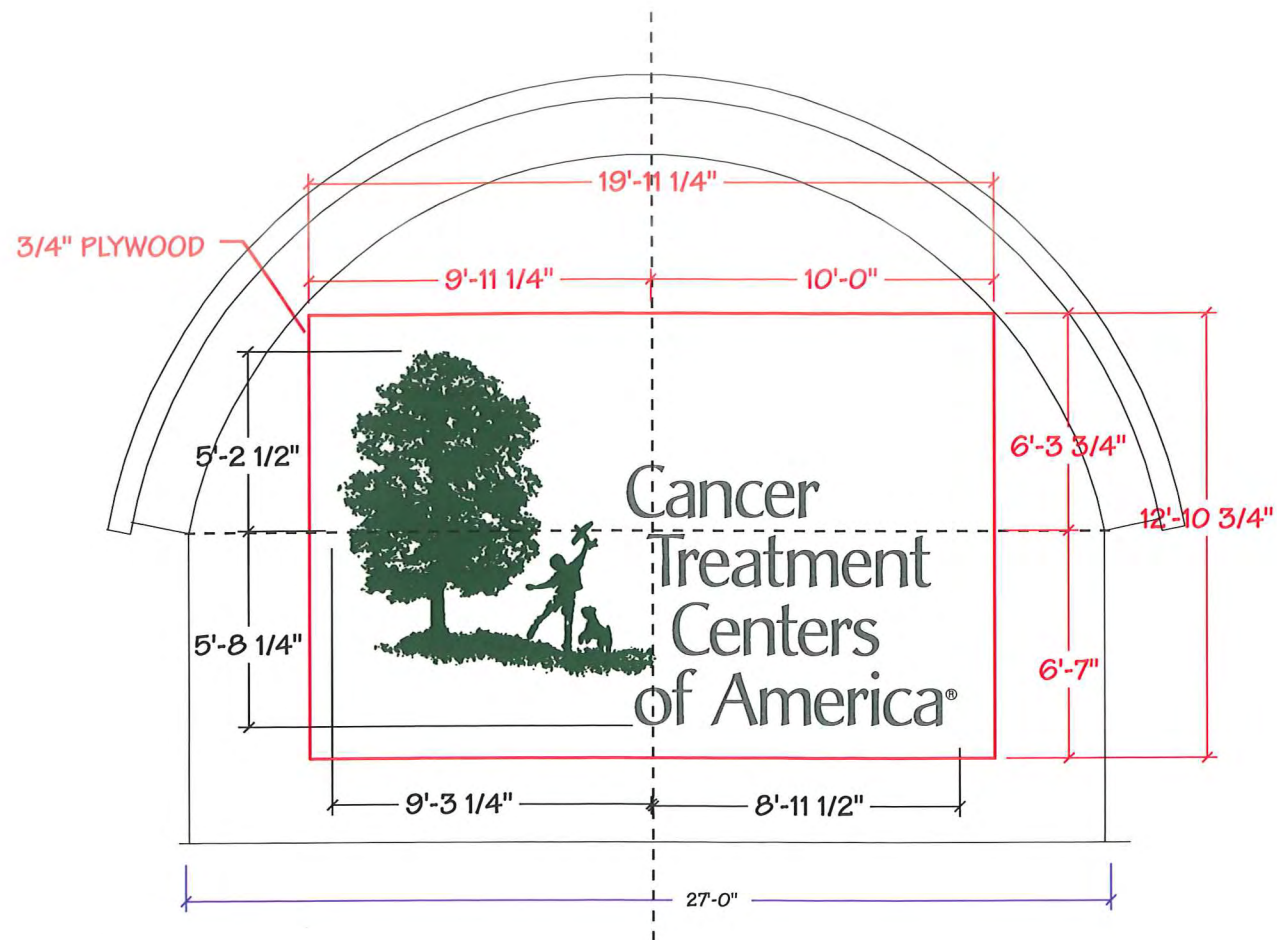
SIGN B3 SPECIFICATIONS:
NON-ILLUMINATED REVERSE PAN CHANNEL LETTER

LETTER FACE IS OPAQUE PAINTED METAL



1 WEST ELEVATION - SCALE: 1" = 30'-0"

PROJECT:	
Western Regional Medical Center Cancer Treatment Centers of America 14200 W. Fillmore St. Goodyear, AZ	
TITLE:	
Building Sign - Elevation	
DESIGNER:	SALES:
Dan Horton	Paul Bleier
DESIGN No:	DATE:
2008-D-007	08/19/08
SCALE:	REVISIONS:
AS NOTED	
SHEET No:	
ELV-W1-PW	
© 2008, BLEIER INDUSTRIES, LTD. This drawing and the ideas expressed herein, remain the confidential property of Bleier Industries, Ltd. This drawing and the ideas contained in it are not to be reproduced, copied or disclosed to any other person or entity without the express written permission of an officer of Bleier Industries, Ltd.	

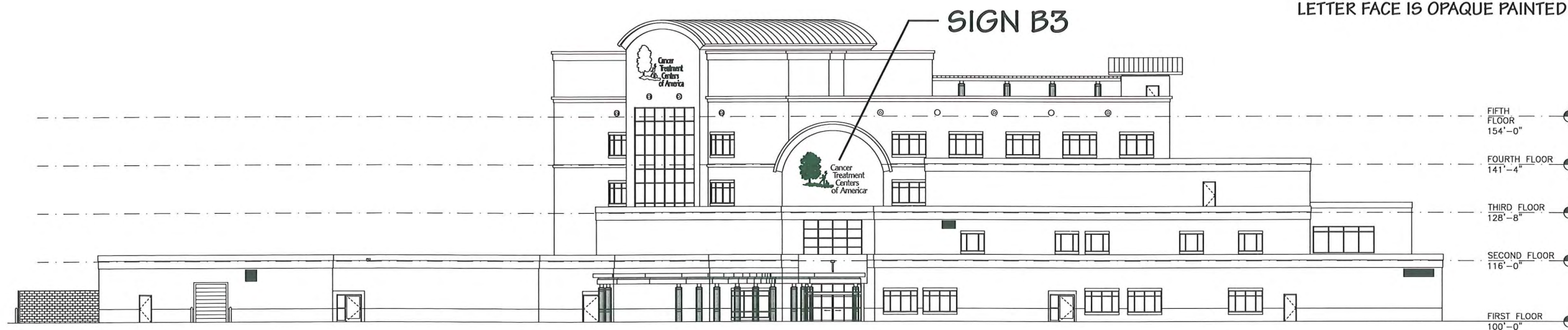


② SIGN B3 - ISOLATION - WEST ELEVATION - SCALE: 3/16" = 1'-0"

③ TYPICAL REVERSE PAN CHANNEL LETTER - SCALE: NTS

SIGN B3 SPECIFICATIONS:
REVERSE PAN CHANNEL LETTER

LETTER FACE IS OPAQUE PAINTED METAL



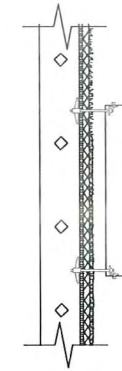
① WEST ELEVATION - SCALE: 1" = 30'-0"

7'-3 3/4"
 8 1/4" **Outpatient Entry** 10 1/4"

6.25 SF

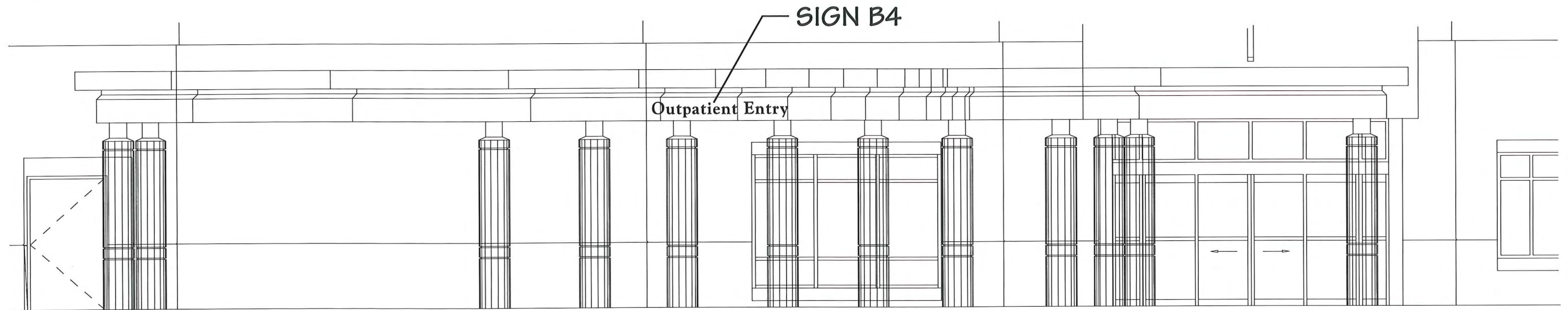
SIGN B4 SPECIFICATIONS:
 NON-ILLUMINATED REVERSE PAN CHANNEL LETTER

LETTER FACE IS OPAQUE PAINTED METAL



3 REVERSE PAN CHANNEL LETTER - SCALE: 1/2" = 1'-0"

4 TYPICAL REVERSE PAN CHANNEL LETTER SECTION - SCALE: NTS



2 SIGN B4 - ISOLATION - WEST ELEVATION - SCALE: 3/16" = 1'-0"



1 WEST ELEVATION - SCALE: 1" = 30'-0"

SIGN B4

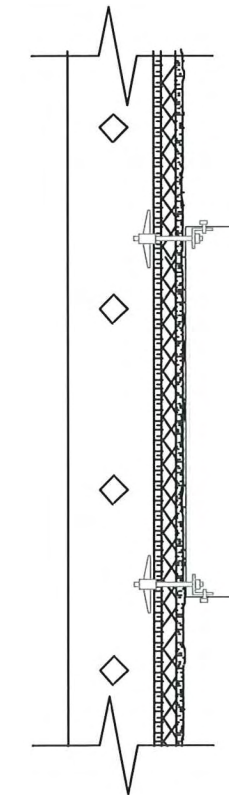
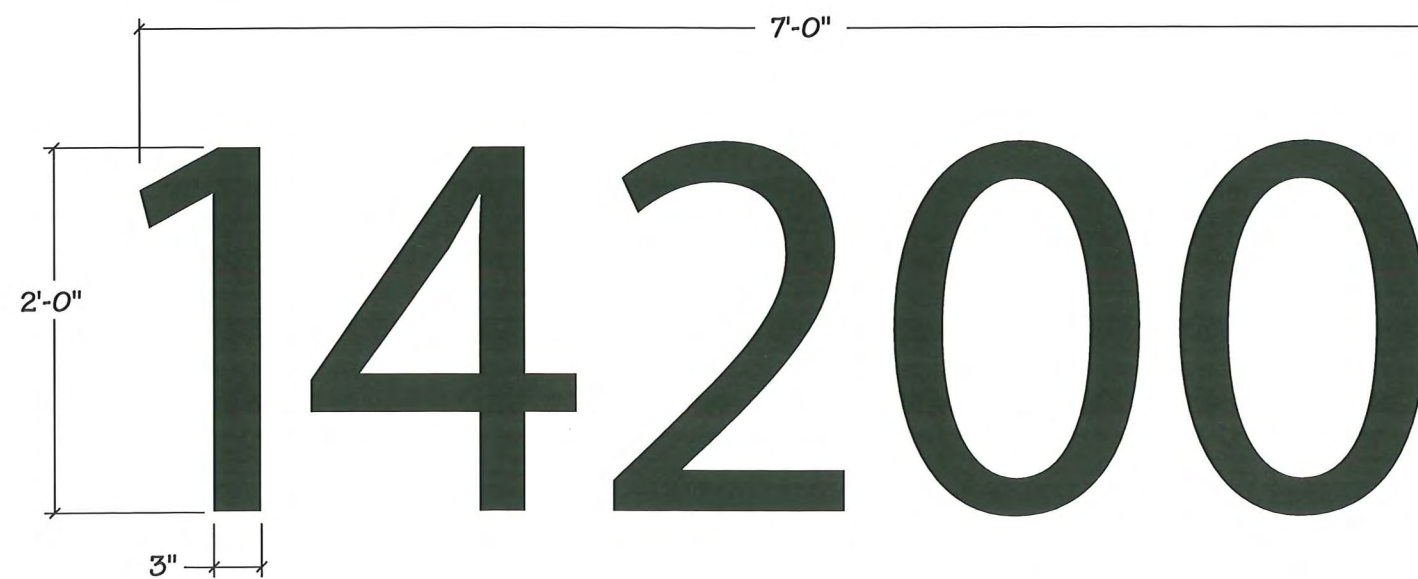
bleier
 INDUSTRIES

9650 WEST ROOSEVELT STREET
 TOLLESON, ARIZONA 85353
 602-944-3117
 FAX 602-395-0753
 SALES@BLEIERINDUSTRIES.COM

PROJECT:	
Western Regional Medical Center Cancer Treatment Centers of America 14200 W. Fillmore St. Goodyear, AZ	
TITLE:	
Building Sign - Elevation	
DESIGNER:	SALES:
Dan Horton	Paul Bleier
DESIGN No:	DATE:
2008-D-007	08/19/08
SCALE:	REVISIONS:
AS NOTED	
SHEET No:	
ELV-W2	
<small>© 2008, BLEIER INDUSTRIES, LTD. This drawing and the ideas expressed herein, remain the confidential property of Bleier Industries, Ltd. This drawing and the ideas contained in it are not to be reproduced, copied or disclosed to any other person or entity without the express written permission of an officer of Bleier Industries, Ltd.</small>	

PROJECT:	
Western Regional Medical Center Cancer Treatment Centers of America 14200 W. Fillmore St. Goodyear, AZ	
TITLE:	
Building Address Numerals	
DESIGNER:	SALES:
Dan Horton	Paul Bleier
DESIGN No:	DATE:
2008-D-007	08/19/08
SCALE:	REVISIONS:
AS NOTED	
SHEET No:	
AN-1	
<small>© 2008, BLEIER INDUSTRIES, LTD. This drawing and the ideas expressed herein, remain the confidential property of Bleier Industries, Ltd. This drawing and the ideas contained in it are not to be reproduced, copied or disclosed to any other person or entity without the express written permission of an officer of Bleier Industries, Ltd.</small>	

ADDRESS NUMERALS TO BE LOCATED ON BUILDING PER DIRECTION OF FIRE MARSHAL



① ADDRESS NUMERAL SPECIFICATIONS:
NON-ILLUMINATED REVERSE PAN CHANNEL LETTER

14 SF

LETTER FACE IS OPAQUE PAINTED METAL - COLOR TO MATCH BUILDING PALETTE ACCENT COLOR

FONT IS MYRIAD - ROMAN

QTY: 2

② TYPICAL REVERSE PAN
CHANNEL LETTER SECTION - SCALE: NTS