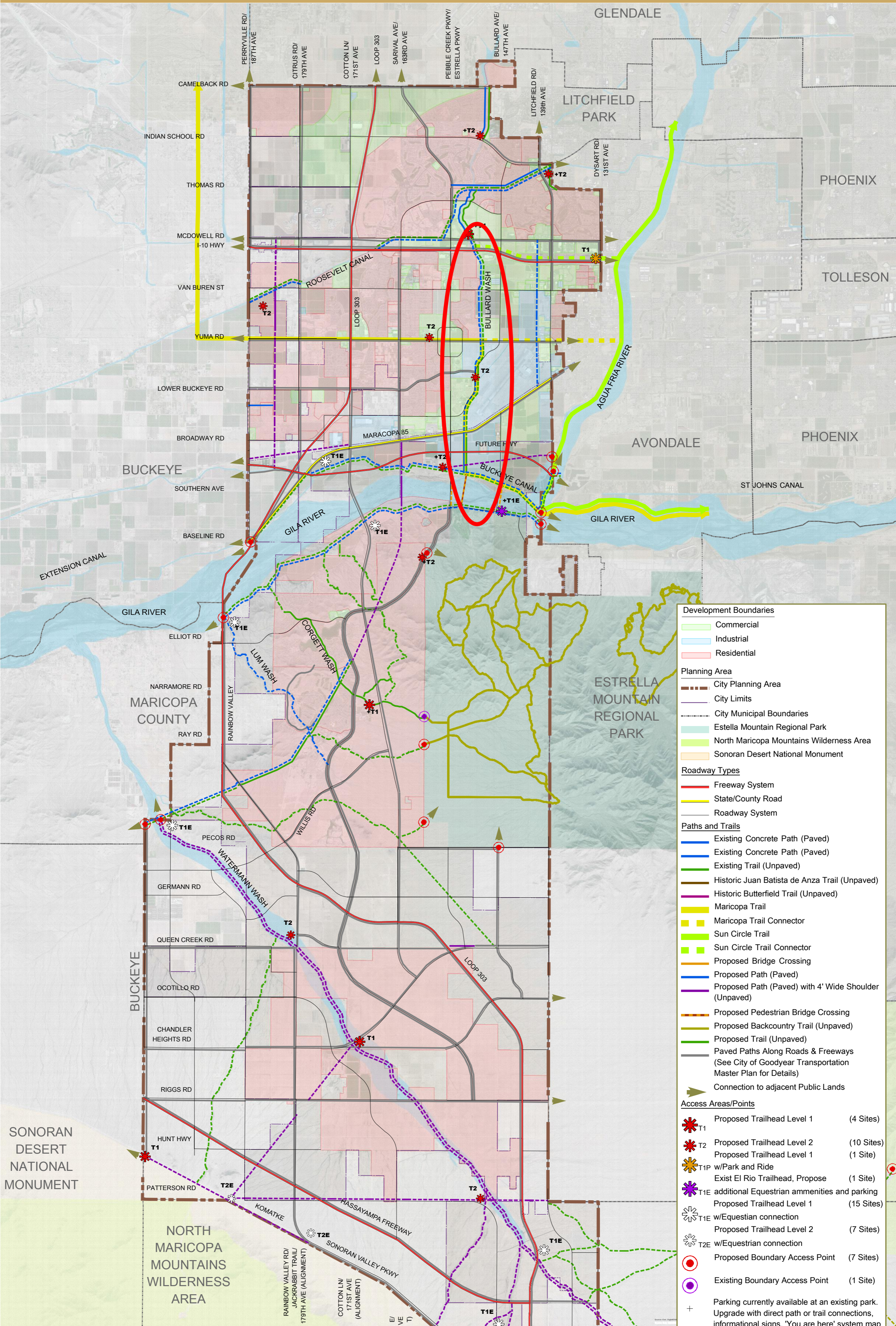


Trailheads and Access with Development Boundaries (North)



Development Boundaries

- Commercial
- Industrial
- Residential

Planning Area

- City Planning Area
- City Limits
- City Municipal Boundaries
- Estrella Mountain Regional Park
- North Maricopa Mountains Wilderness Area
- Sonoran Desert National Monument

Roadway Types

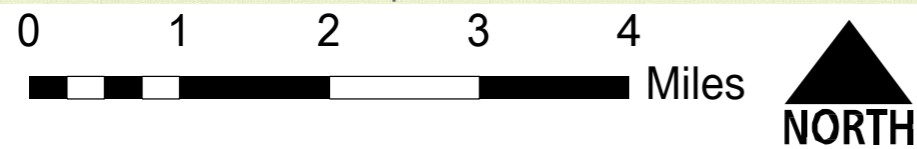
- Freeway System
- State/County Road
- Roadway System

Paths and Trails

- Existing Concrete Path (Paved)
- Existing Concrete Path (Paved)
- Existing Trail (Unpaved)
- Historic Juan Batista de Anza Trail (Unpaved)
- Historic Butterfield Trail (Unpaved)
- Maricopa Trail
- Maricopa Trail Connector
- Sun Circle Trail
- Sun Circle Trail Connector
- Proposed Bridge Crossing
- Proposed Path (Paved)
- Proposed Path (Paved) with 4' Wide Shoulder (Unpaved)
- Proposed Pedestrian Bridge Crossing
- Proposed Backcountry Trail (Unpaved)
- Proposed Trail (Unpaved)
- Paved Paths Along Roads & Freeways (See City of Goodyear Transportation Master Plan for Details)
- Connection to adjacent Public Lands

Access Areas/Points

- T1 Proposed Trailhead Level 1 (4 Sites)
- T2 Proposed Trailhead Level 2 (10 Sites)
- T1P Proposed Trailhead Level 1 w/Park and Ride (1 Site)
- T1E Exist El Rio Trailhead, Propose (1 Site)
- T1E additional Equestrian amenities and parking (15 Sites)
- T1E w/Equestrian connection (7 Sites)
- T2E Proposed Trailhead Level 2 w/Equestrian connection (7 Sites)
- Proposed Boundary Access Point (7 Sites)
- Existing Boundary Access Point (1 Site)
- Parking currently available at an existing park. Upgrade with direct path or trail connections, informational signs, 'You are here' system map with water, shade, and seating.



Existing Access Areas as of June 2013
 * Loop 303 final path alignment to be determined
 * The information in the general plan is diagrammatic only. Exact location is subject to change based upon existing conditions and future development.