



CITY OF
Goodyear

A large, circular sculpture made of metal rings and a grid, filled with blue and clear plastic bottles, set against a dark blue sky. The sculpture is composed of several concentric metal rings that form a spiral-like structure. A fine metal grid is stretched across these rings, and it is densely packed with thousands of plastic bottles. Most of the bottles are blue, but there are also some clear and white ones. The bottles are arranged in a way that they catch the light, creating a shimmering effect. The background is a clear, dark blue sky. The overall composition is circular and symmetrical, with the text centered in the middle.

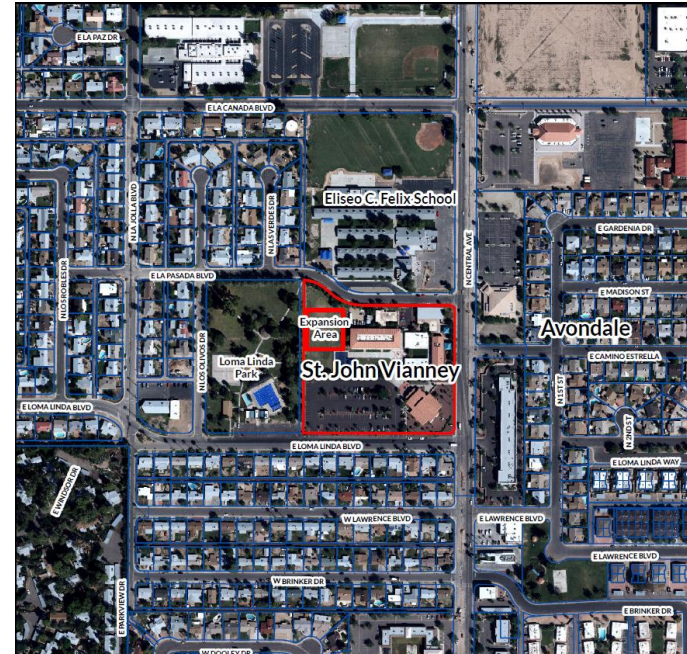
St. John Vianney
Special Use Permit

St. John Vianney



CURRENT STATUS

- Zoned MF-24
- Church was built in 1958
- School opened in 1992
- Special Use Permits are required for Churches and Schools in current Zoning Ordinance

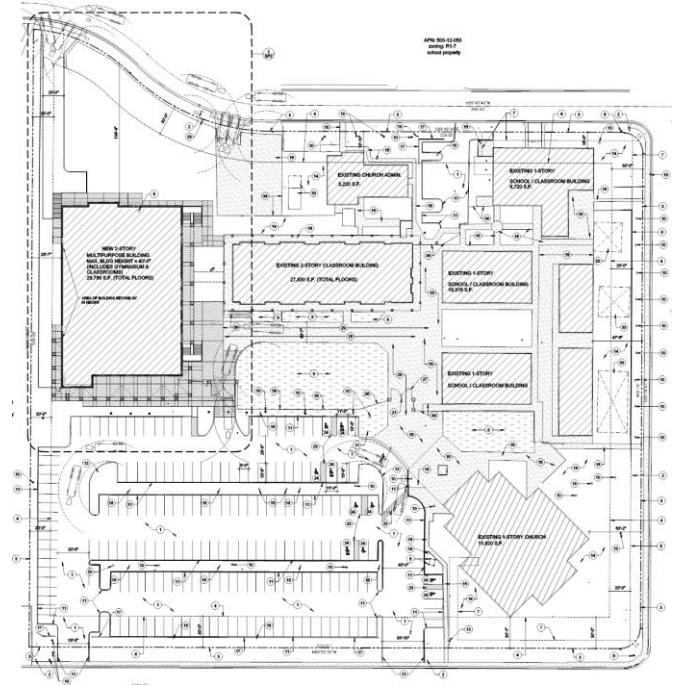


St. John Vianney



REQUEST

- Special Use Permit to conform with zoning
- Build a new multipurpose building which includes 10 new classrooms and a gymnasium



St. John Vianney



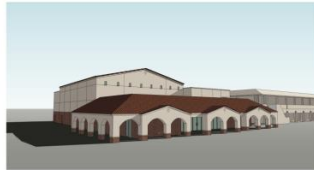
CONCEPTUAL ELEVATIONS



VIEW LOOKING SOUTHWEST

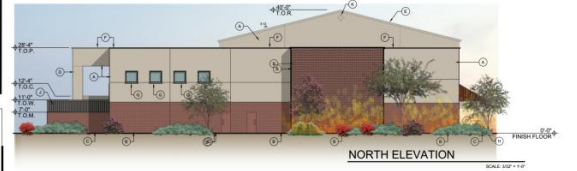


VIEW LOOKING NORTHWEST



VIEW LOOKING NORTHEAST

- MATERIAL LEGEND**
- ① SPENTITE FIBER REINFORCED CONCRETE OVER BRICK TO MATCH EXISTING CLASSROOM BUILDING
 - ② BRICK TO MATCH EXISTING CLASSROOM BUILDING
 - ③ BRICK OVER INTERIOR FINISH TO MATCH EXISTING CLASSROOM BUILDING
 - ④ CONCRETE OVER BRICK TO MATCH EXISTING CLASSROOM BUILDING
 - ⑤ SPENTITE FIBER REINFORCED CONCRETE OVER BRICK TO MATCH EXISTING CLASSROOM BUILDING
 - ⑥ CONCRETE OVER BRICK TO MATCH EXISTING CLASSROOM BUILDING
 - ⑦ FINISH FLOOR
 - ⑧ FINISH FLOOR
 - ⑨ FINISH FLOOR
 - ⑩ FINISH FLOOR
 - ⑪ FINISH FLOOR
 - ⑫ FINISH FLOOR
 - ⑬ FINISH FLOOR
 - ⑭ FINISH FLOOR
 - ⑮ FINISH FLOOR
 - ⑯ FINISH FLOOR
 - ⑰ FINISH FLOOR
 - ⑱ FINISH FLOOR
 - ⑲ FINISH FLOOR
 - ⑳ FINISH FLOOR
 - ㉑ FINISH FLOOR
 - ㉒ FINISH FLOOR
 - ㉓ FINISH FLOOR
 - ㉔ FINISH FLOOR
 - ㉕ FINISH FLOOR
 - ㉖ FINISH FLOOR
 - ㉗ FINISH FLOOR
 - ㉘ FINISH FLOOR
 - ㉙ FINISH FLOOR
 - ㉚ FINISH FLOOR
 - ㉛ FINISH FLOOR
 - ㉜ FINISH FLOOR
 - ㉝ FINISH FLOOR
 - ㉞ FINISH FLOOR
 - ㉟ FINISH FLOOR
 - ㊱ FINISH FLOOR
 - ㊲ FINISH FLOOR
 - ㊳ FINISH FLOOR
 - ㊴ FINISH FLOOR
 - ㊵ FINISH FLOOR
 - ㊶ FINISH FLOOR
 - ㊷ FINISH FLOOR
 - ㊸ FINISH FLOOR
 - ㊹ FINISH FLOOR
 - ㊺ FINISH FLOOR
 - ㊻ FINISH FLOOR
 - ㊼ FINISH FLOOR
 - ㊽ FINISH FLOOR
 - ㊾ FINISH FLOOR
 - ㊿ FINISH FLOOR
- NOTE:** TO BE MATCHED TO EXISTING CLASSROOM BUILDING MATERIALS AND FINISHES TO MATCH EXISTING CLASSROOM BUILDING
- SCALE:** 3/8" = 1'-0"

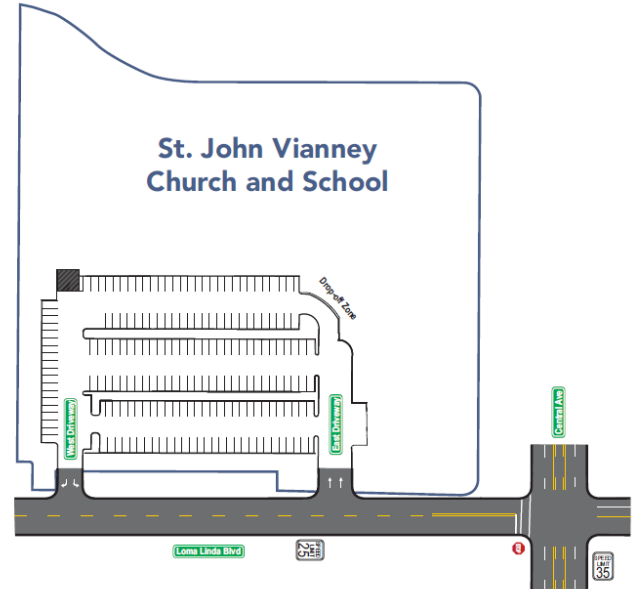


St. John Vianney



TRAFFIC STUDY

- Pick-up and drop-off patterns will remain as is
- Traffic study has been reviewed and approved by Engineering Department



St. John Vianney



RELATION TO LOMA LINDA PARK



Questions?

