

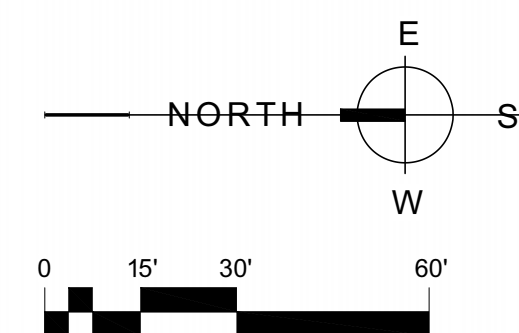
1 LANDSCAPE PLAN
1" = 30'-0"

LANDSCAPING LEGEND

DESCRIPTION: PORTION OF SOUTHWEST QUATER SECTION 21, TOWNSHIP 1 NORTH, RANGE 1 WEST OF GILA AND SALT RIVER BASE AND MERIDIAN, MARICOPA COUNTY, ARIZONA

ZONING DISTRICT: I-2 GENERAL INDUSTRIAL PARK
SITE: 5.004 ACRES (217,960 SF)

- SF SQUARE FEET
- PROPERTY LINE
- - - EASEMENTS AND BUILDING SET BACK
- RETENTION POND
- GRAVEL GROUND COVER
- EXISTING SITE SOIL/GROUND COVER
- TREE PLANTING
- ✱ GRASS PLANTING
- SHRUB PLANTING
- BOULDER WORK



ARCHITECTURAL EXPRESSIONS, LLP
113 ILLINI DRIVE, FORSYTH, IL 62535
PHONE: 217-877-4620 FAX: 217-877-4625
www.aexllp.com

DATE: _____
LIC. EXP.: _____

CONCEPTUAL LANDSCAPE PLAN
ARIZONA ISOTOPES
NEW CYCLOTRON FACILITY
GOODYEAR, ARIZONA

No.	Description	Date

CONCEPTUAL

Project Number 5837
Date 11/06/18
Drawn By Author
Checked By Checker

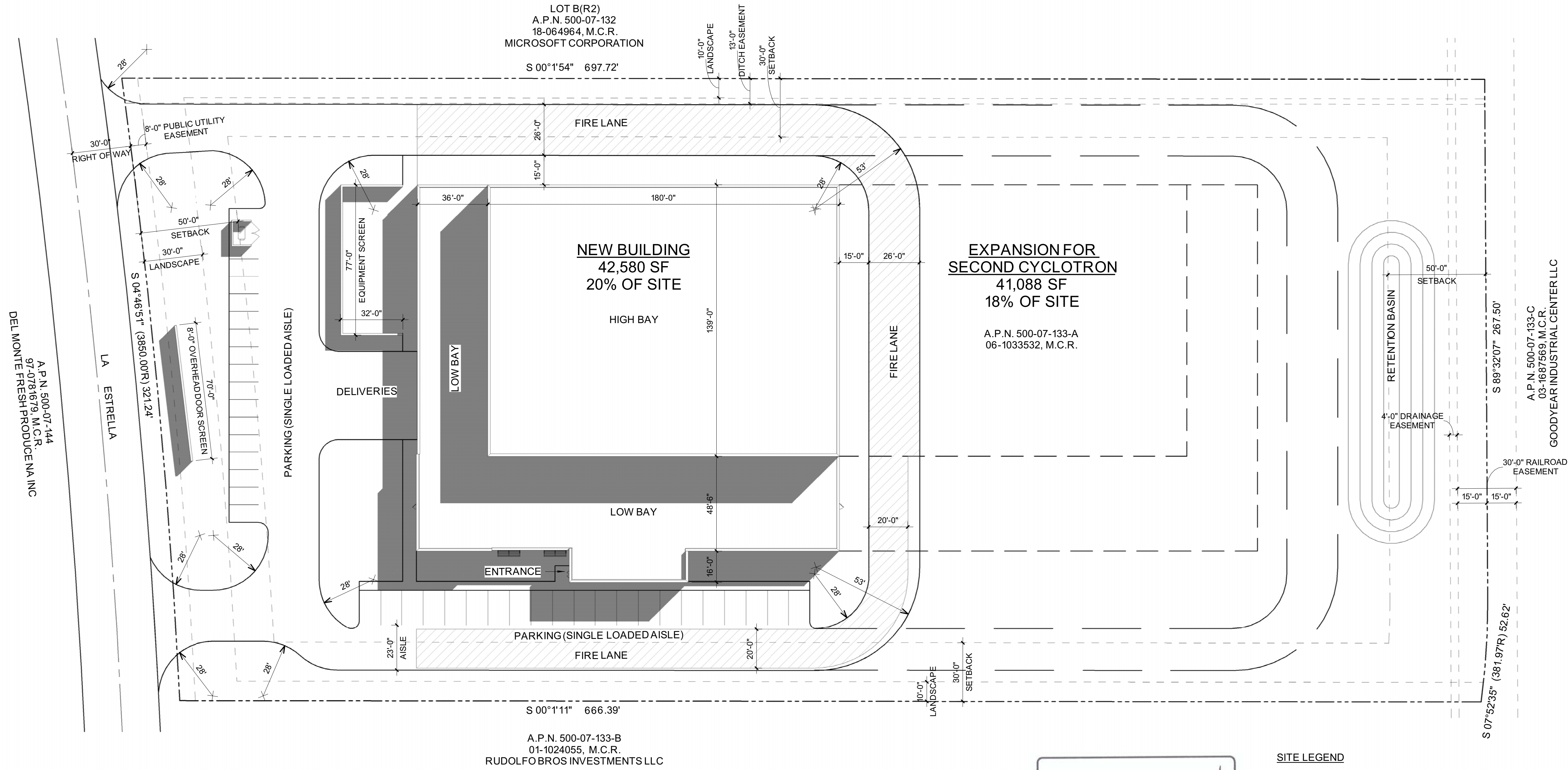
SP2

No.	Description	Date

CONCEPTUAL

Project Number	5837
Date	11/06/18
Drawn By	AEX
Checked By	AEX

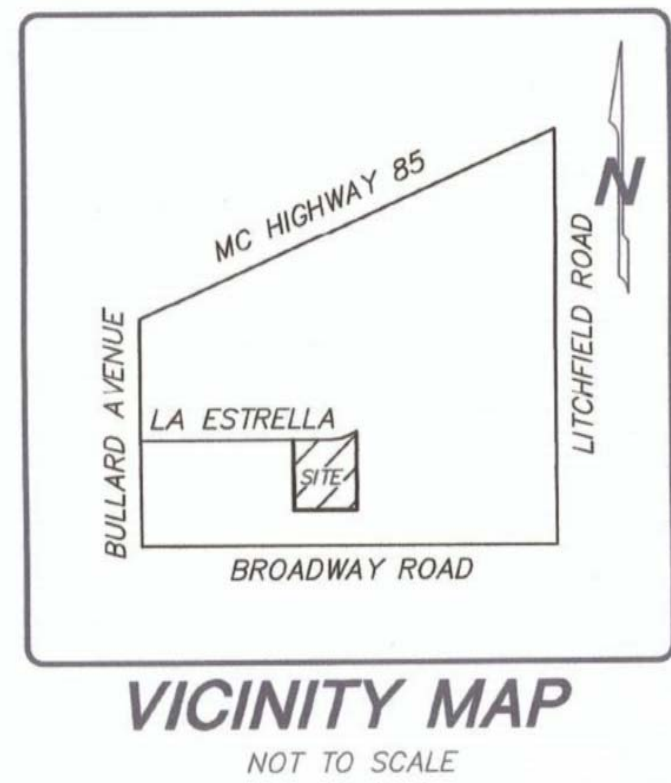
SP1



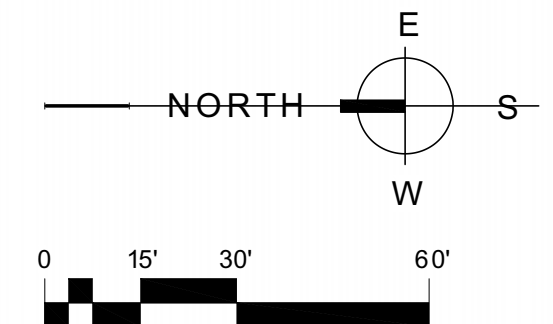
LOT B(R2)
A.P.N. 500-07-132
18-064964, M.C.R.
MICROSOFT CORPORATION

EXPANSION FOR SECOND CYCLOTRON
41,088 SF
18% OF SITE
A.P.N. 500-07-133-A
06-1033532, M.C.R.

A.P.N. 500-07-133-B
01-1024055, M.C.R.
RUDOLFBROS INVESTMENTS LLC



- SITE LEGEND**
- DESCRIPTION: PORTION OF SOUTHWEST QUATER SECTION 21, TOWNSHIP 1 NORTH, RANGE 1 WEST OF GILA AND SALT RIVER BASE AND MERIDIAN, MARICOPA COUNTY, ARIZONA
 - ZONING DISTRICT: I-2 GENERAL INDUSTRIAL PARK
 - SITE: 5.004 ACRES (217,960 SF)
 - SF SQUARE FEET
 - PROPERTY LINE
 - EASMENTS AND BUILDING SET BACK
 - RETENTION POND
 - FIRE LANE



1 SITE PLAN
1" = 30'-0"