



## Project Narrative

For

PHO Gibbs (RELO)

15273 W. McDowell Rd

Goodyear, AZ 85395



Submitted by:

Steve Ciolek

Coal Creek Consulting

2166 E University Dr #201

Tempe, AZ 85281

(480) 246-4131

[sciolek@coal-creek.com](mailto:sciolek@coal-creek.com)

10/30/18

## Existing Conditions

Verizon Wireless (VZW) has an existing Wireless Communication Facility (WCF) located at 15273 W. McDowell Rd. Verizon has a total of three (3) antennas in the existing array, within the existing 83' Monument sign. The antennas are fully concealed within the sign at heights of 60' and 76'-6" above grade. The associated ground equipment is located within the adjacent equipment shelter behind the commercial shopping center.

Verizon would like to upgrade the existing facility to support the 850 technology, however cannot place additional equipment within the space provided within the billboard. To upgrade the current configuration, one (1) antenna per sector, one larger antenna and one Remote Radio Head would need to be added per sector. Not only would the equipment not fit in the small compartment, but the heat of the additional equipment would cause equipment failure. To alleviate the issue and provide the improved service in the immediate area, Verizon would like to relocate the existing equipment to a new Monopalm near the existing Monument.



## **Nature of Request**

Verizon Wireless proposes a new 65-foot-tall wireless communication facility disguised as a faux tree. The proposed facility will remain the general location previously approved facility. The existing facility is currently tucked back in the southeast portion of the shopping center with interstate directly South, and a vacant parcel used for flood control directly to the East. The proposed Monopalm will be located approximately 100' North of the monument within the landscape area. The proposed Monopalm will be setback 753' from the Northern property line, 72' from the Eastern, 134' from the Southern and 1553' from the Western property line.

The 2:1 setback requirement from the Eastern Property Line (AG) could not be met due to commercial activity behind the shopping center. Truck Ramps and underground utilities prohibit the facility from relocating the facility further West. The proposed location will be setback at least 1:1 from the adjacent parcel. Currently, the adjacent parcel is vacant and used as a wash for the surrounding developments. There are no plans for residential use developments in the future.

By locating the facility in the back of the shopping center, reasonable measures have been taken to minimize the visual impact of the facility. The facility will be surrounded by existing vegetation and Commercial buildings to reduce visibility from McDowell Road.

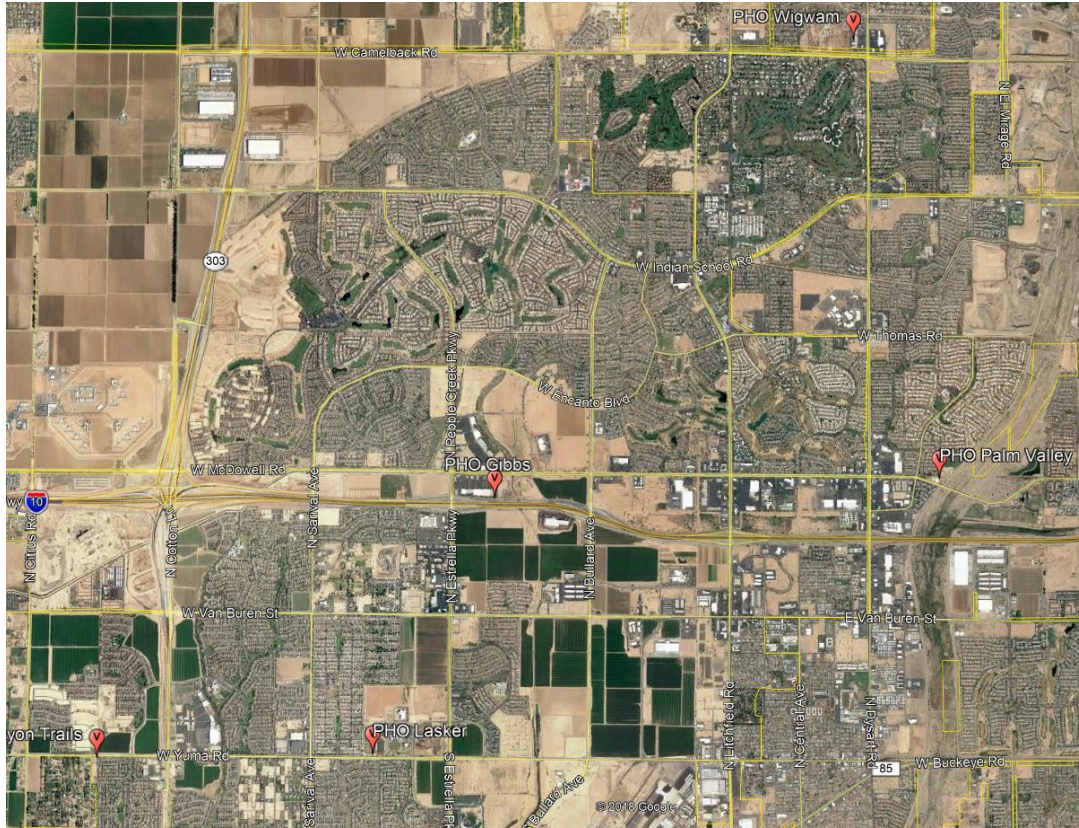
Besides the existing billboard, that will not allow the upgraded equipment. There are no other existing wireless facilities within the area to collocate Verizon's antennas.

The new facility will be designed as a Monopalm. Although engineered to support additional carriers, the design of the Monopalm may prohibit future carriers. For example, a future carrier's antenna may not fit within an extended "growth pod" or concealed within a "dead frond skirt". Other jurisdiction tried multiple arrays with the fronds but produced an abnormal palm tree.

The proposed design of the facility, Monopalm, will blend with live palm trees currently located throughout the shopping center. Coax cables will be routed within the tree, while the antennas and remote radios heads will be hidden within the fronds, painted to match. The existing ground equipment will remain in the current location.

After the initial construction, the facility will not generate addition traffic in the neighborhood. Access to the proposed communication facility will be limited to routine maintenance, or in case of any technical breakdown. Typically, maintenance occurs once every 4-6 weeks and will utilize existing driveway as access to the site. No existing vegetation will be removed in this proposal.

## **Map of Existing Sites**



## **Conclusion**

It is the goal of Verizon Wireless to service the area with more reliable cellular service. By working with the landlord to construct a stealth facility, Verizon is proposing the best possible coverage solution (from an appearance standpoint). As the area grows, residents in the immediate area will need reliable cellular service.

The proposed wireless communication facility will not increase the vehicular or pedestrian traffic; nor will it emit odor, dust, gas, noise, vibration, smoke, heat, glare or lower property values in the immediate area. The wireless communication facility shall be removed within one hundred eighty (180) days of cessation of use and will return the area to its condition prior to the construction. Approving this application will allow Verizon to continue providing the best service to its customers.