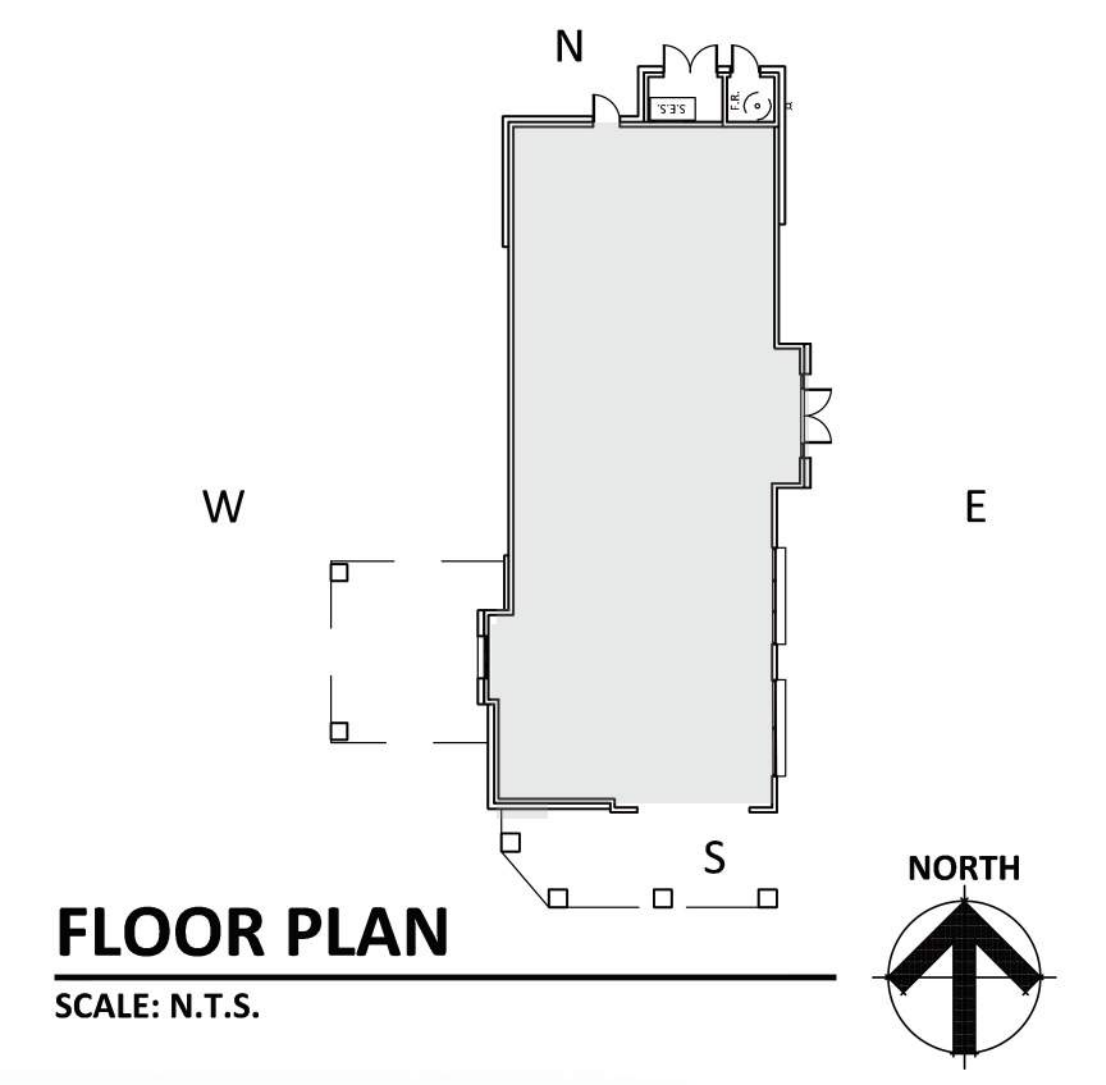
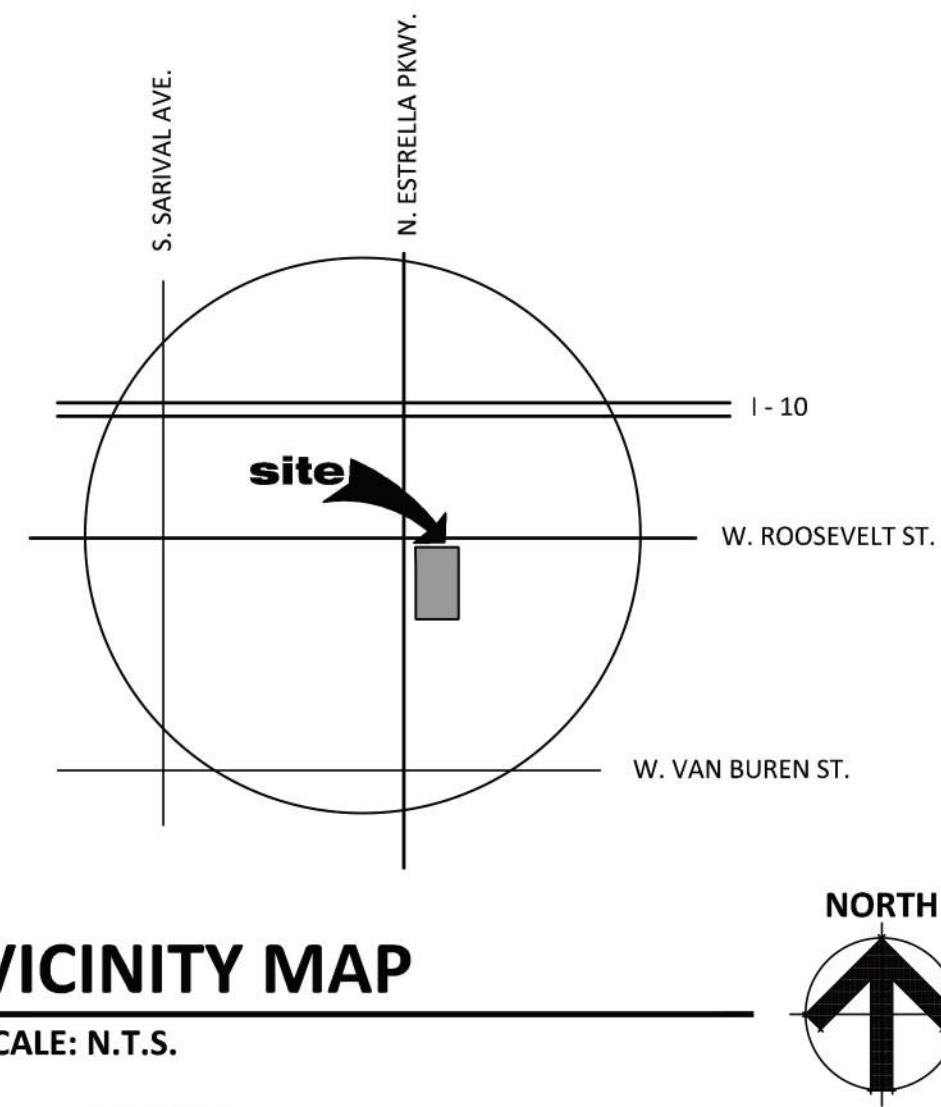


MATERIALS & COLORS

- A** ALUMINUM:
MFG: BRIGGS STEEL
FINISH: CLEAR ANODIZED
- B** 4X4X16 BRICK VENEER:
MFG: SPEC-BRICK
FINISH: SMOOTH
COLOR: GARDNER BLEND
- C** STUCCO & PAINT:
MFG: SHERWIN WILLIAMS
COLOR: PAVILION BEIGE
SPEC #: SW7512
- D** ALUMINUM STOREFRONT:
MFG: KAWNEER
FINISH: DARK BRONZE
- E** PAINT:
MFG: SHERWIN WILLIAMS
COLOR: KAFFEE
SPEC #: SW6104
- F** EIFS PAINT:
MFG: SHERWIN WILLIAMS
COLOR: ONLINE
SPEC #: SW7072
- G** EIFS PAINT:
MFG: SHERWIN WILLIAMS
COLOR: STONEY CREEK
SPEC #: SW9610

* SIGNAGE TO BE APPROVED UNDER SEPARATE PERMIT



EAST ELEVATION

SCALE: 3/16" = 1'-0"



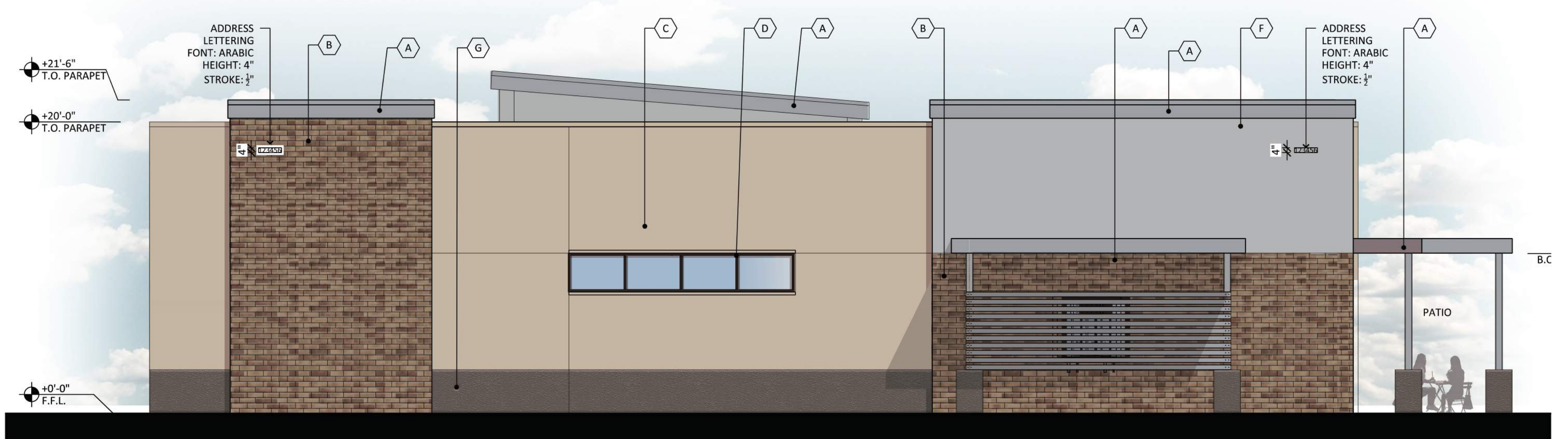
NORTH ELEVATION

SCALE: 3/16" = 1'-0"



SOUTH ELEVATION

SCALE: 3/16" = 1'-0"



WEST ELEVATION

SCALE: 3/16" = 1'-0"



PAD 1 AT ALDI - BEC
SEC OF W. ROOSEVELT ST. AND ESTRELLA PARKWAY
GOODYEAR, AZ
DATE: 06-22-2020 (PRELIMINARY)



© 2019 R K A A ARCHITECTS, INC. ALL RIGHTS RESERVED. THIS DRAWING IS AN INSTRUMENT OF SERVICE. IT IS THE PROPERTY OF R K A A ARCHITECTS, INC. AND MAY NOT BE DUPLICATED, USED OR DISCLOSED WITHOUT WRITTEN PERMISSION OF THE ARCHITECT.

EL-1 ELEVATIONS

RKAA# 19192.00

